

Notes

1. Drawing shows design intent only by HD.
2. Detailed canopy design by specialist.
3. Structural integration and interactions to be designed and coordinated by the specialist, structural engineer and coordinated with shopfront specialist.
4. All dims are approximate and need to be checked and confirmed on site.
5. Light fittings, type, location and specification to be designed by lighthing specialist.
6. Text content, type, logo, colour and any additional requirements to be designed and coordinated by branding specialist.



A Detail A Architrave moulding - first floor chapel window



B Detail B Flower motif - first floor chapel window cornice



C Detail C Proposed wall lantern with integrated mini spot lights, kept at low light level

P2	22/02/16	Revised Door Note
P1	01/12/15	Issued for Planning
C1	16/10/15	Issued for Construction (text above the canopy removed)
I1	29/09/15	Issued for Information

Revisions

PLANNING

**HARPER
DOWNIE**
CREATIVE
ARCHITECTURE

Gate House
1 St John's Square
London EC1M 4DH

T +44 20 7490 7674
studio@harperdownie.com
www.harperdownie.com

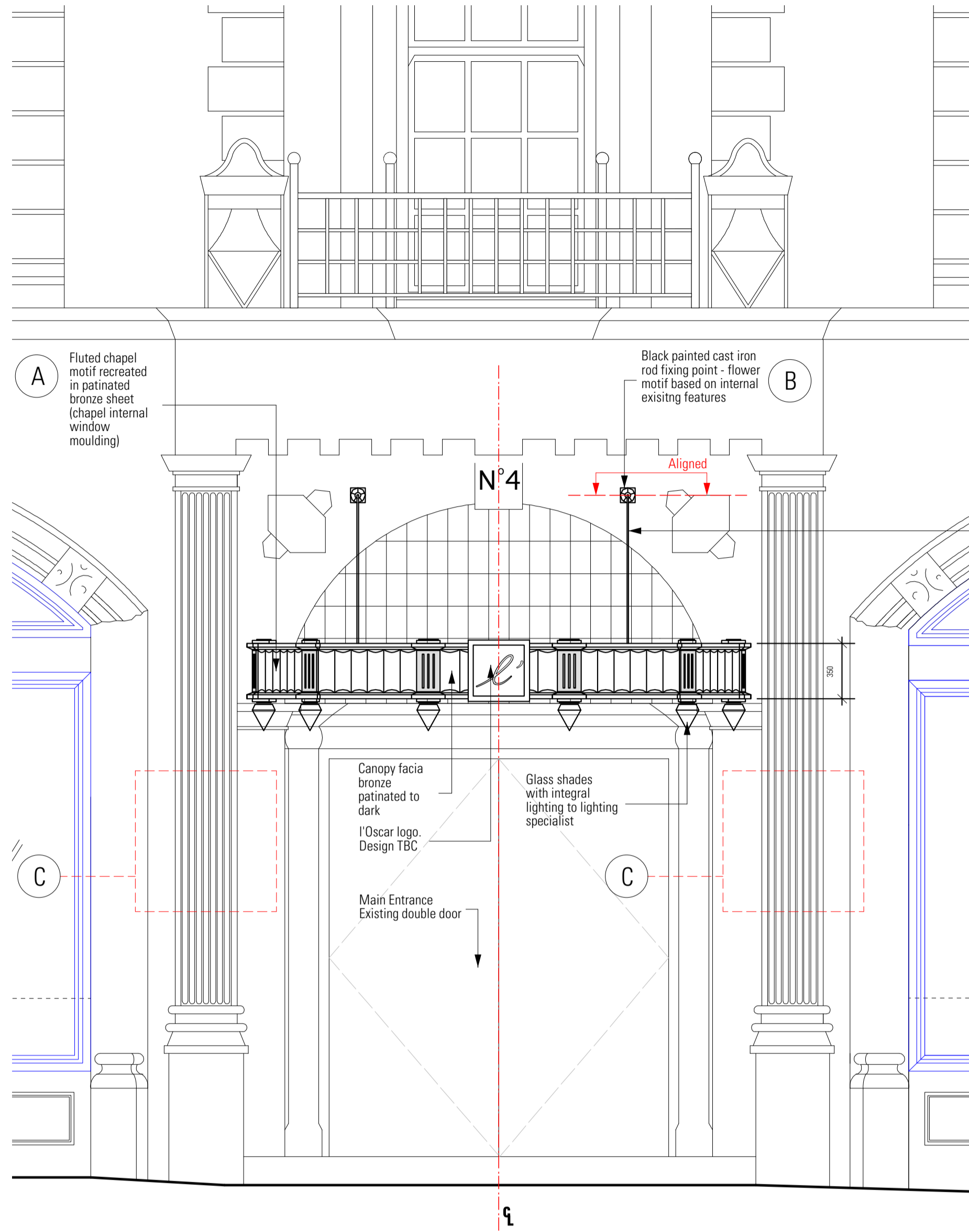
Client
Havza Ltd

Project
2-6 Southampton Row

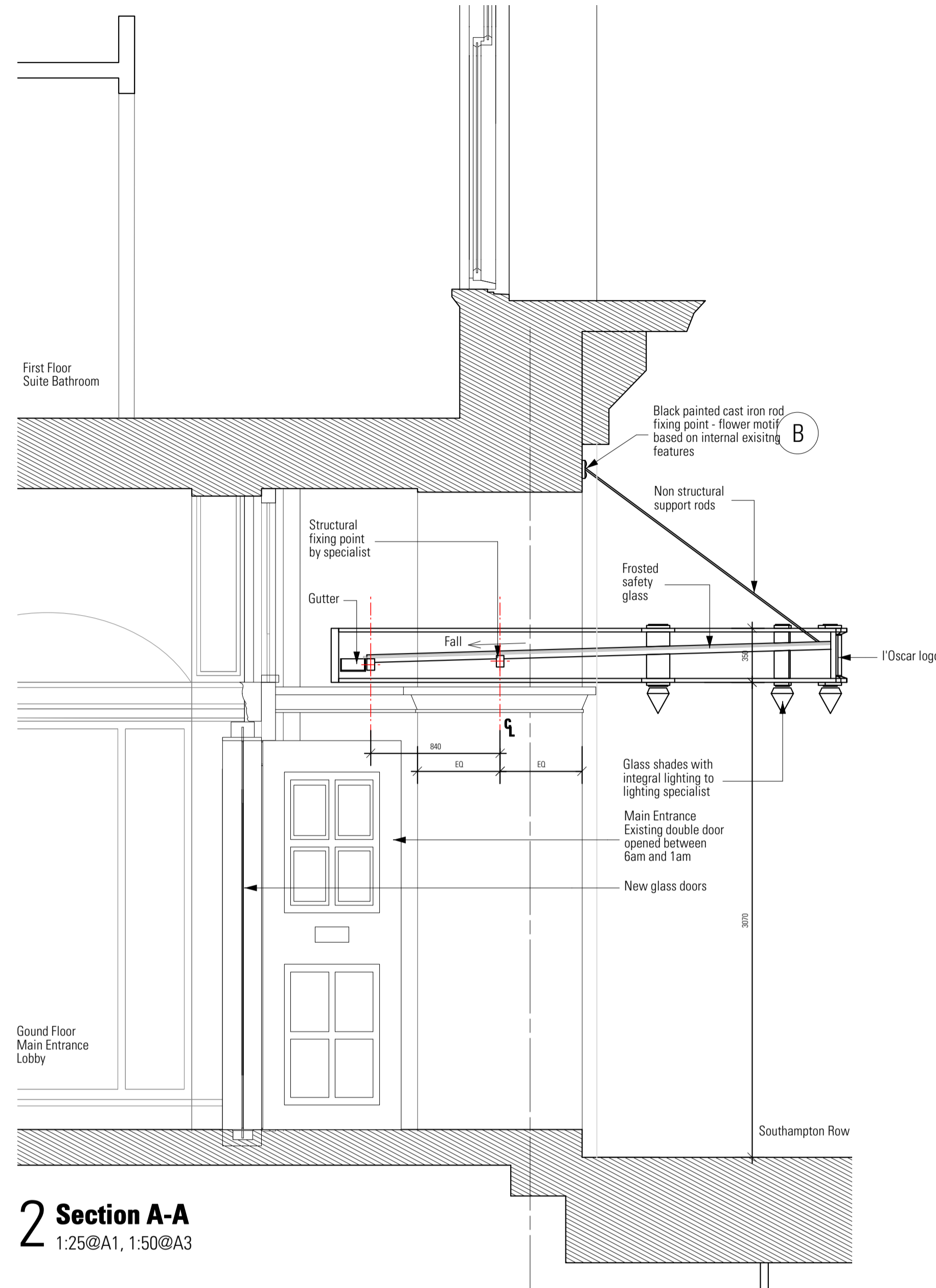
Drawing Title
Design Intent for External Canopy
Main Entrance
Southampton Row

Status	Planning	Drawn	IG	Checked	MM
Scale	A1 - 1:25, A3 - 1:50	Date	Sept 2015	Revision	
Drwg. No.	586EW101	Revision	P2		

1 Elevation
1:25@A1, 1:50@A3



2 Section A-A
1:25@A1, 1:50@A3



3 Plan View Ground Floor
1:25@A1, 1:50@A3

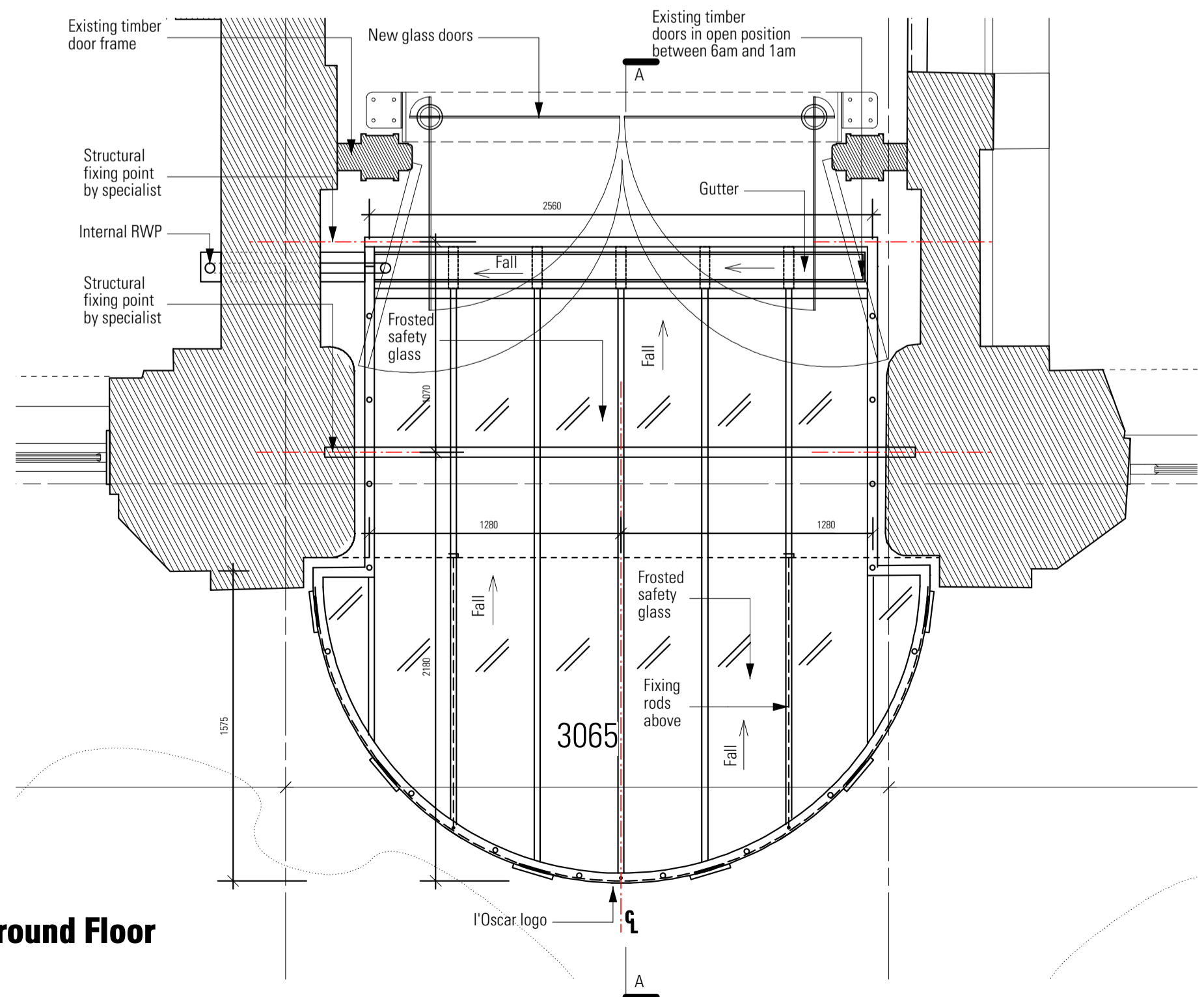


Photo 01
Existing Entrance

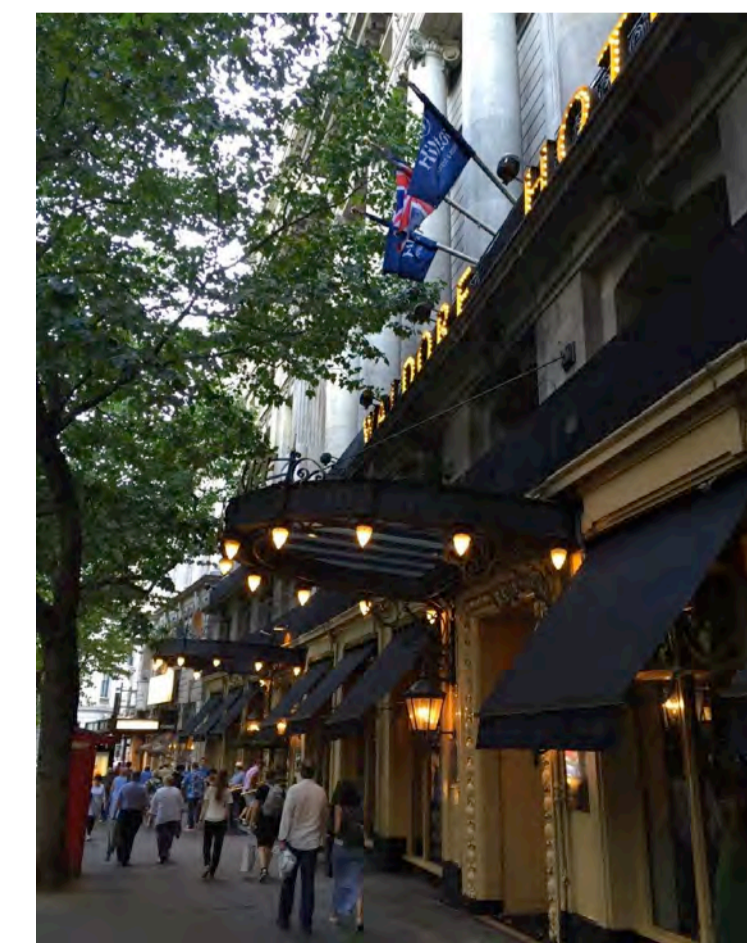


Photo 02
Waldorf Hotel Entrance

Main Entrance
Southampton Row