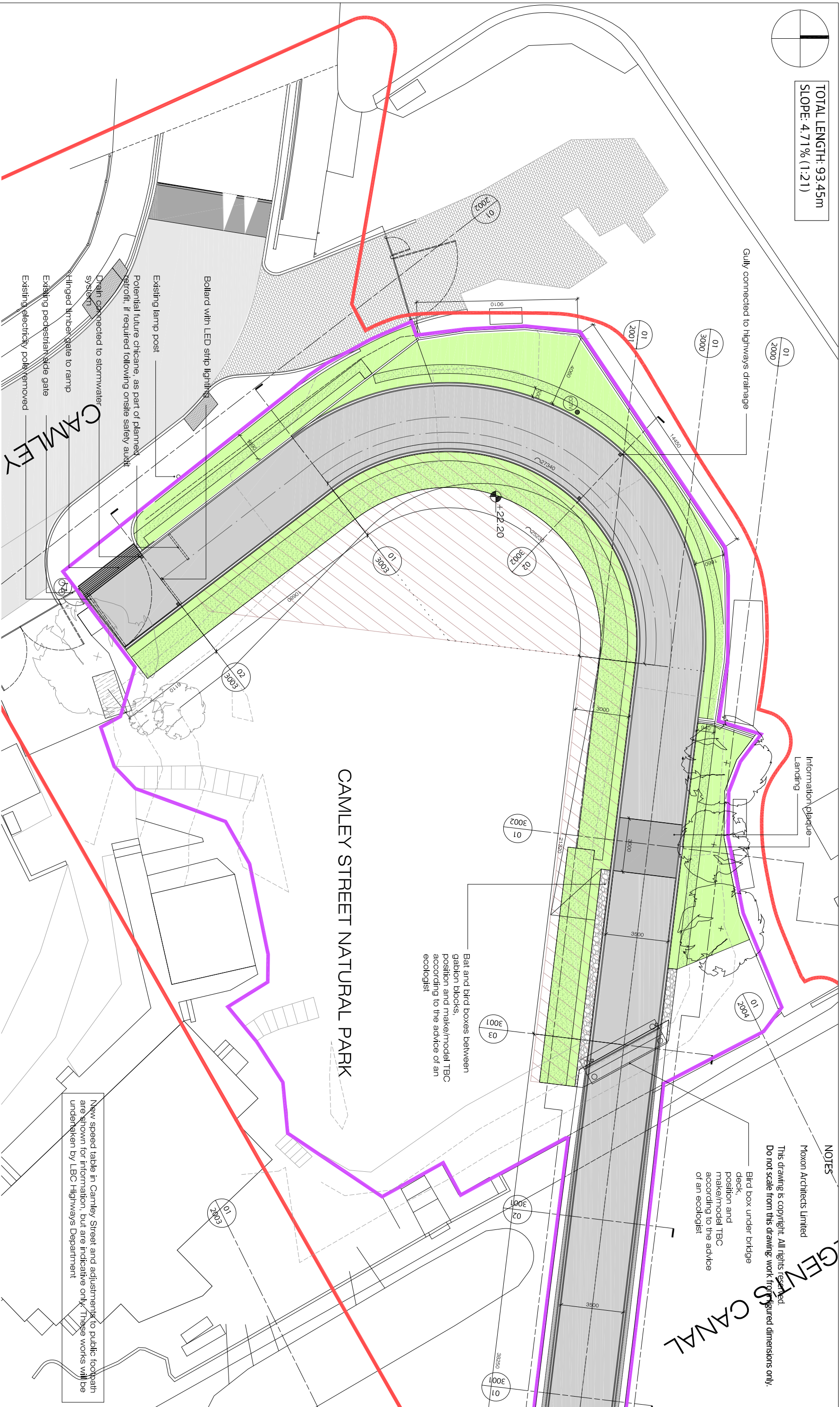
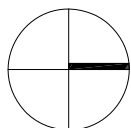


TOTAL LENGTH: 93.45m
SLOPE: 4.71% (1:21)



01 PROPOSED BRIDGE RAMP PLAN

SCALE 1:200 @ A3

KEY:

- CCTV Mast
- Police cyclists welcome sign
- Granite Stone Setts
- Gabbion block retaining wall
- Planting Zone
- Exclusion zone for future LWT visitors centre
- Reserved matters submission boundary
- OPP Boundary

MOXON

LONDON
Great Western Studios, 65 Alfred Road, London W2 5EU
t: 0207 034 0088 | f: 0207 034 0099
SCOTLAND
Ardoch, Camley, Aberdeenshire AB35 5UN
m: 0774 061 9198
mail@monarchitects.com | www.monarchitects.com

PROJECT TITLE
CAMLEY BRIDGE

DRAWING TITLE
PROPOSED BRIDGE RAMP PLAN
FOR APPROVAL

DWG STATUS	FILE	DATE	SCALE
DRAWN	TB AH	31.03.15	
CHECKED	BM A	JOB NO	545
DWG NO	KX_MOX_A_BR3_1002_G		

NOTES

Moxon Architects Limited
This drawing is copyright. All rights reserved.
Do not scale from this drawing; work from figured dimensions only.

Bird box under bridge deck, position and make/model TBC according to the advice of an ecologist

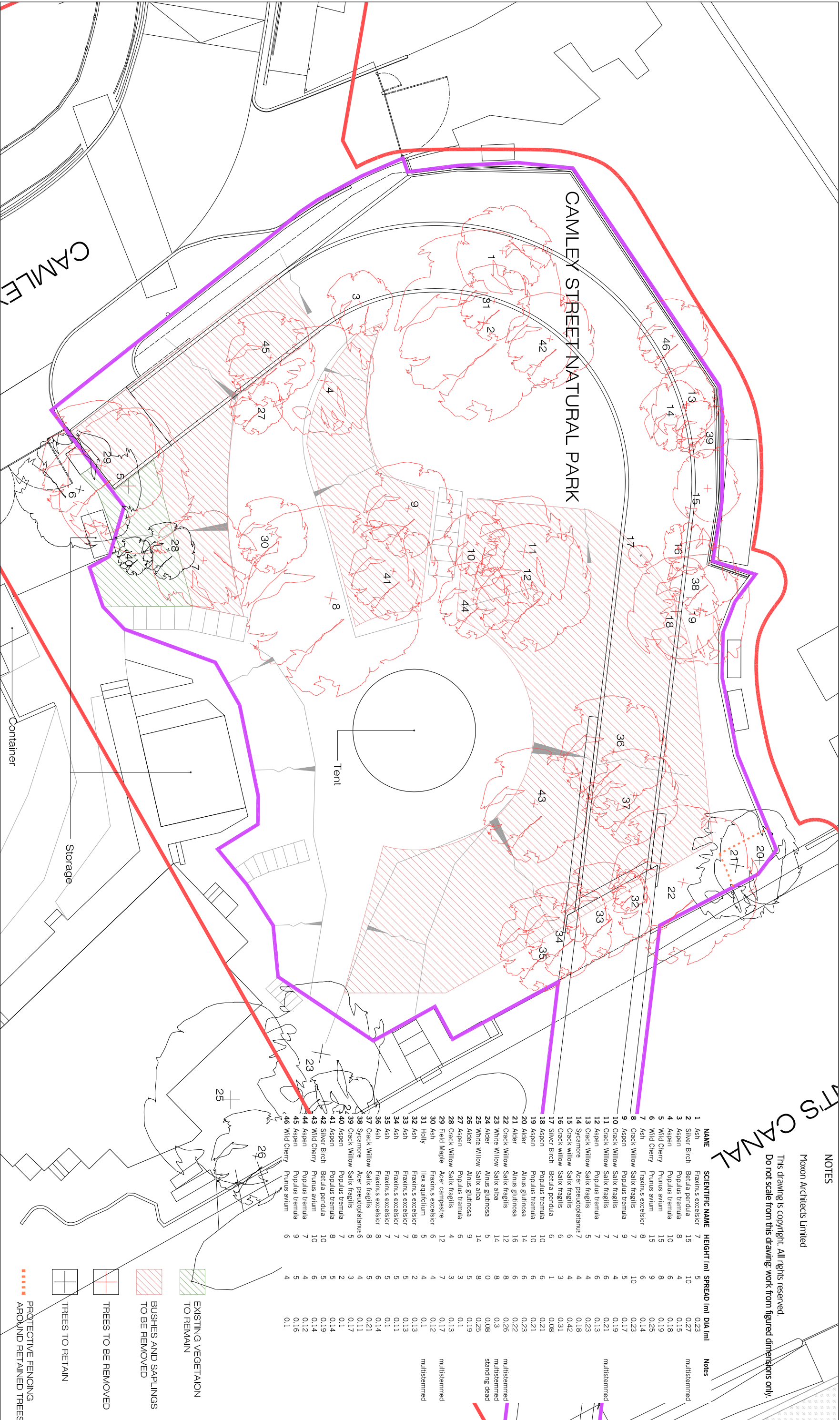
Bat and bird boxes between gabbion blocks, position and make/model TBC according to the advice of an ecologist

New speed table in Camley Street and adjustments to public footpath are shown for information, but are indicative only. These works will be undertaken by LBC Highways Department

NOTES

Moxon Architects Limited

This drawing is copyright. All rights reserved.
Do not scale from this drawing: work from figured dimensions only.



01 TREE WORKS PLAN

SCALE 1:200@ A3

MOXON

LONDON
Great Western Studios, 65 Alfred Road, London W2 5EU
t 0207 034 0088 | f 0207 034 0099

SCOTLAND
Ardoch, Craigmile, Aberdeenshire AB35 5UN
m. 0774 061 9198
mja@moxonarchitects.com | www.moxonarchitects.com

PROJECT TITLE **CAMLEY BRIDGE**
DRAWING TITLE **TREES WORKS PLAN**
DWG STATUS **FOR APPROVAL**

DRAWN	AH, TB	FILE	S45	DATE	24.04.15
CHECKED	BM	JOB NO	S45	SCALE	1:200 @ A3
DWG NO	KX_MOX_A_BR3_1010_G				

Moxon Architects Limited

REGENT'S CANAL



1. 1M BRICK PARAPET

2. 1.4M HIGH TIMBER INFILL HANDRAIL ON BRIDGE DECK. SEE DRAWING KX_MOX_A_BR3_3005/004

3. 1.4M HIGH METAL INFILL HANDRAIL ON RAMP. GRADIENT TRANSIT TO TIMBER INFILL. SEE DRAWING KX_MOX_A_BR3_3005/01

4. 1.9M HIGH TIMBER FENCE ON CAMALEY STREET BOUNDARY. SEE DRAWING KX_MOX_A_BR3_3005/04

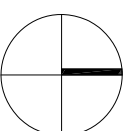
5. 2.2M HIGH METAL FENCE ON BOUNDARY WITH SPOC

6. 2.2M HIGH METAL FENCE ON TOP OF RETAINING WALL

EXISTING FENCE RETAINED

01 RETAINING WALLS AND FENCE LINES

SCALE 1:250@A3



PROJECT TITLE CAMLEY BRIDGE
DRAWING TITLE RETAINING WALLS AND FENCE LINES
DWG STATUS FOR INFORMATION

DRAWN	AH, TB	FILE	545	DATE	24.04.15		
CHECKED	BMA	JOB NO	545	SCALE	1:250 @ A3		
DWG NO: KX_MOX_A_BR3_1013_G							

LONDON
Great Western Studios, 65 Alfred Road, London W2 5EJ
t 0207 034 0088 | f 0207 034 0099

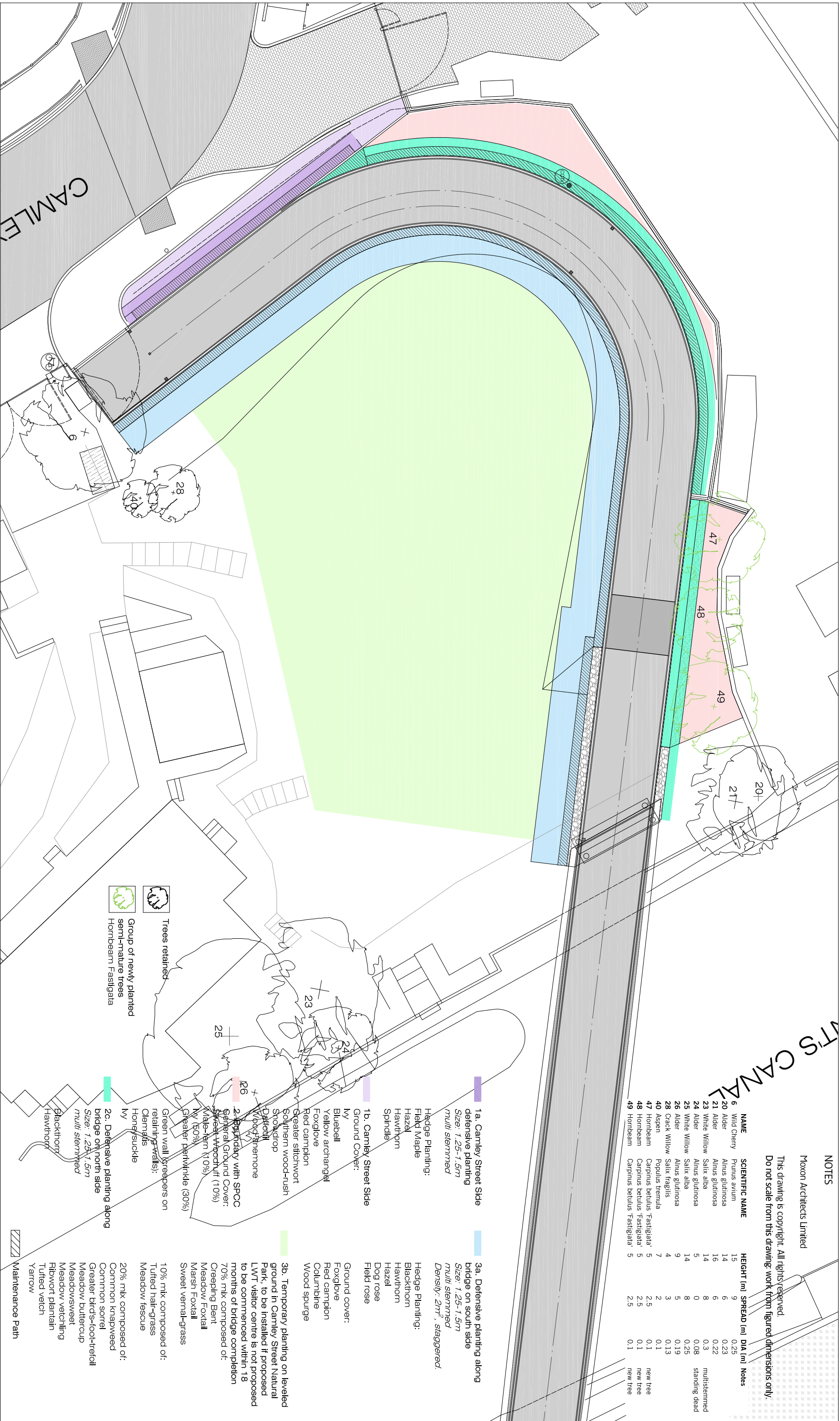
SCOTLAND
Ardloch, Craighie, Aberdeenshire AB35 5UN
m: 0774 061 9198
mailto:moxonarchitects.com | www.moxonarchitects.com

NOTES

Moxon Architects Limited

This drawing is copyright. All rights reserved.
Do not scale from this drawing: work from figured dimensions only.

NAME	SCIENTIFIC NAME	HEIGHT (m)	SPREAD (m)	DIA (m)	Notes
6 Wild Cherry	Prunus avium	15	9	0.25	
20 Alder	Alnus glutinosa	14	6	0.23	
21 Alder	Alnus glutinosa	16	6	0.22	
23 White Willow	Salix alba	14	8	0.3	multistemmed
24 Alder	Alnus glutinosa	5	0	0.08	standing dead
25 White Willow	Salix alba	14	5	0.25	
26 Alder	Alnus glutinosa	9	8	0.19	
28 Crack Willow	Salix fragilis	4	3	0.13	
40 Aspen	Populus tremula	7	2	0.1	
47 Hornbeam	Carpinus betulus 'Fastigiata'	5	2.5	0.1	new tree
48 Hornbeam	Carpinus betulus 'Fastigiata'	5	2.5	0.1	new tree
49 Hornbeam	Carpinus betulus 'Fastigiata'	5	2.5	0.1	new tree



01 PLANTING SCHEME

SCALE 1:200@ A3

MOXON

LONDON
Great Western Studios, 65 Alfred Road, London W2 5EU
t: 0207 034 0088 | f: 0207 034 0099

SCOTLAND
Ardoch, Craigmile, Aberdeenshire AB35 5UN
m: 0774 061 9198
mail@moxonarchitects.com | www.moxonarchitects.com

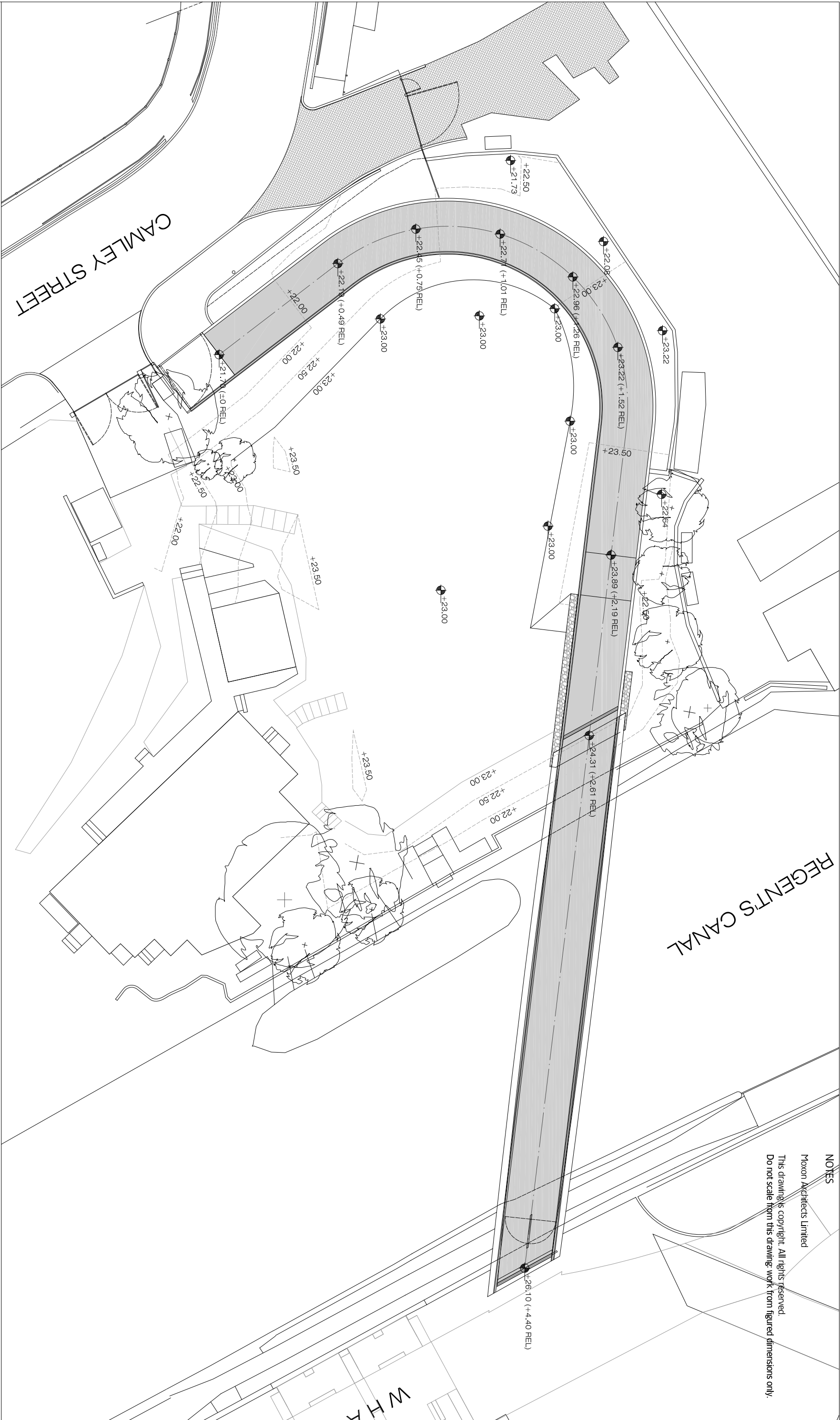
PROJECT TITLE CAMLEY STREET
DRAWING TITLE PROPOSED PLANTING SCHEME
DWG STATUS FOR APPROVAL

DRAWN	AH, TB	FILE	S45	DATE	24.04.15		
CHECKED	BMA	JOB NO	S45	SCALE	1:200 @ A3		
DWG NO	KX_MOX_A_BR3_1014_G						

NOTES

Moxon Architects Limited

This drawing is copyright. All rights reserved.
Do not scale from this drawing; work from figured dimensions only.



01

SITE LEVELS PLAN

SCALE 1:250@ A3

MOXON

LONDON
Great Western Studios, 65 Alfred Road, London W2 5EU
t: 0207 034 0088 | f: 0207 034 0099
SCOTLAND
Ardoch, Canbie, Aberdeenshire AB35 5UN
m: 0774 061 9198
mail@moxonarchitects.com | www.moxonarchitects.com

PROJECT TITLE

CAMLEY BRIDGE

DRAWING TITLE

PROPOSED SITE LEVELS PLAN

DWG STATUS

FOR APPROVAL

DRAWN

AH, TB

FILE

S45

DATE

27.07.15

CHECKED

BM

JOB NO

S45

SCALE

1:250 @ A3

DWG NO

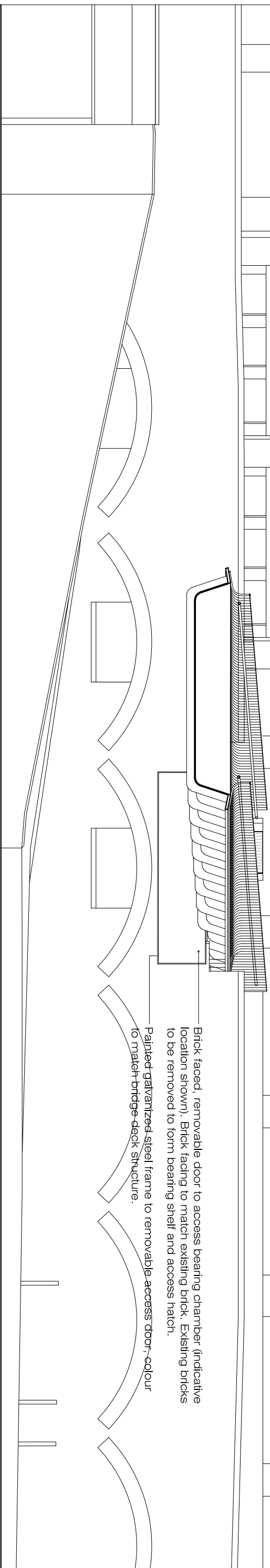
KX_MOX_A_BR3_1015_D

NOTES

Moxon Architects Limited

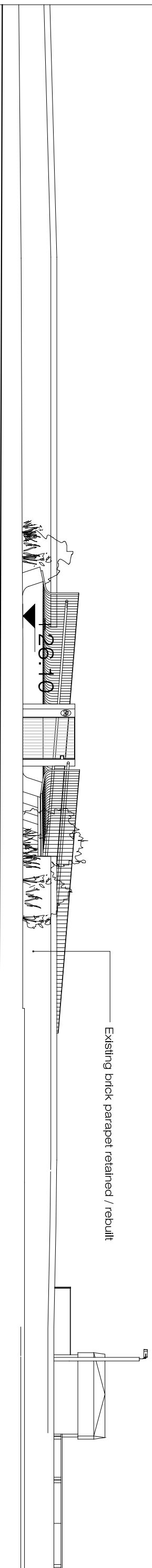
This drawing is copyright. All rights reserved.
Do not scale from this drawing: work from figured dimensions only.

WHARF ROAD VIADUCT



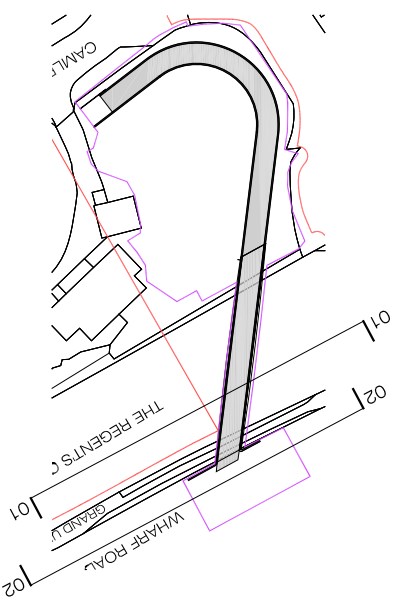
01 INTERFACE WITH KXC: WEST ELEVATION FROM CANAL

SCALE 1:100 @ A3



02 INTERFACE WITH KXC: EAST ELEVATION FROM KXC

SCALE 1:100 @ A3



3047

London

Great Western Studios, 65 Alfred Road, London W2 5EU
t: 0207 034 0088 | f: 0207 034 0099

199

SCOTLAND

Ardoch, Crathie, Abbe

m: 0774 061 9198

mail@moxonarchitects.com | www.moxonarchitects.com

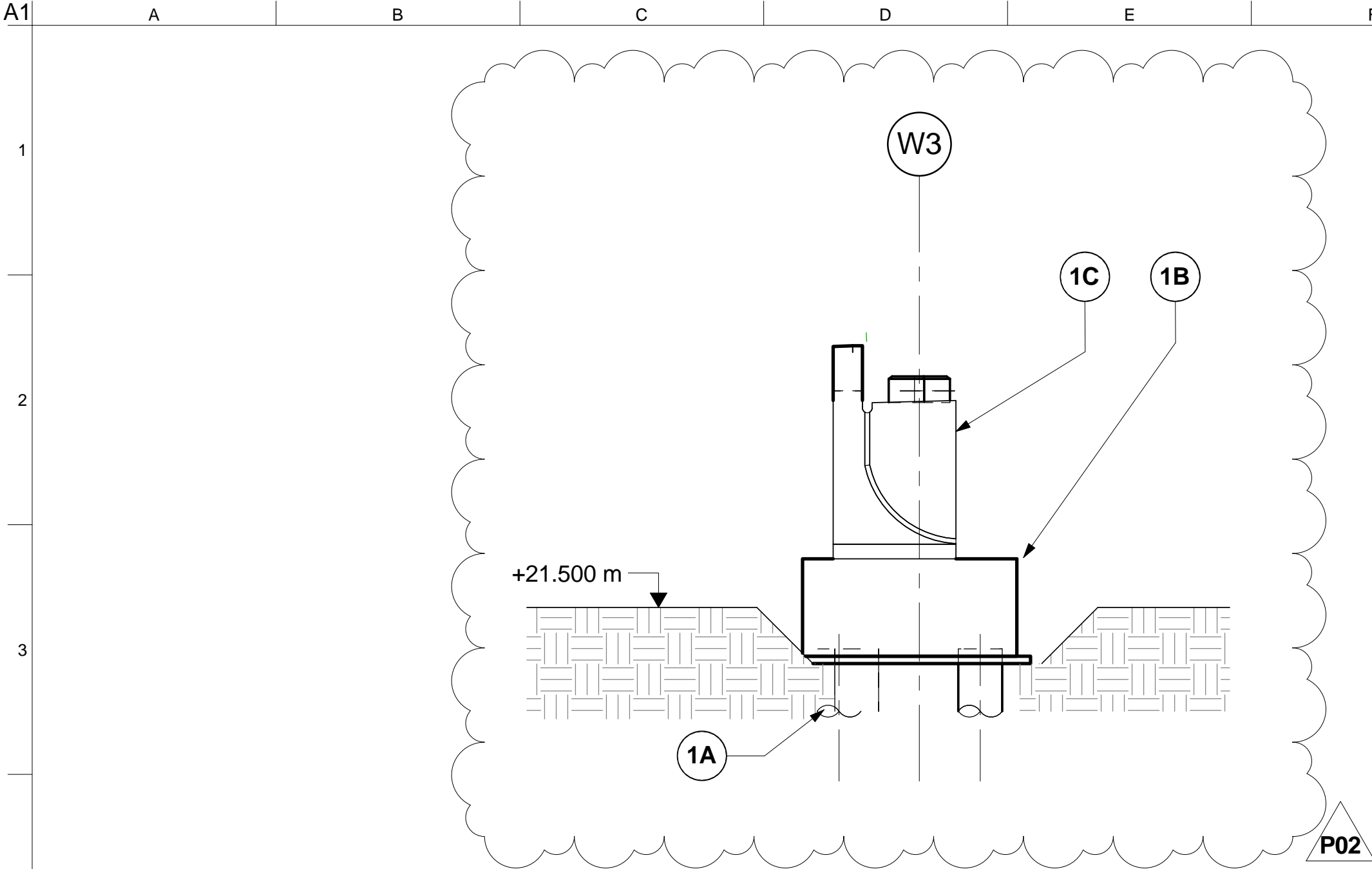
PROJECT TITLE					CAMLEY BRIDGE				
DRAWING TITLE					PROPOSED KSX INTERFACE ELEVATIONS				
DWG STATUS					FOR APPROVAL				
DRAWN	TB	AH	FILE	545	DATE	31.03.15			
CHECKED	BMA		JOB NO	545	SCALE	1:100 @ A3			
DWG NO	KX.MOX.A.BR3_2005.F								

This drawing is copyright. All rights reserved.
Do not scale from this drawing: work from figured dimensions only.



SCOTLAND
Ardoch, Crathie, Aberdeenshire AB35 5UN
m: 0774 061 9198
mail@moxonarchitects.com | www.moxonarchitects.com

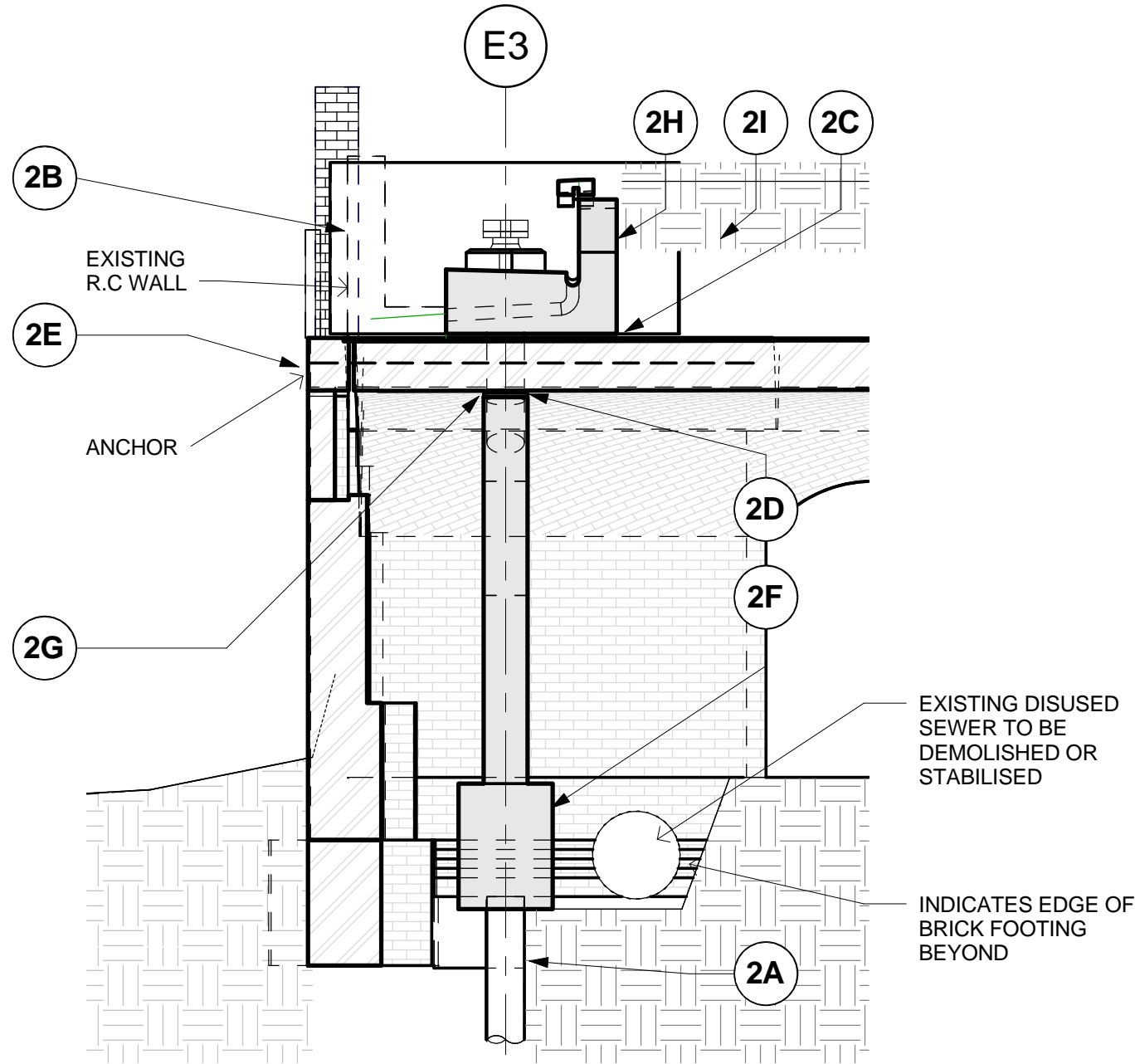
PROJECT TITLE								CAMLEY BRIDGE							
DRAWING TITLE								PROPOSED CROSS SECTIONS							
DWG STATUS								FOR APPROVAL							
DRAWN		TB AH		FILE		545		DATE		31.03.15					
CHECKED		BMA		JOB NO.		545		SCALE		1:200 @ A3					
DWG NO.		KX_MOX_A_BR3_3001_G													



STAGE 1 – WEST ABUTMENT CONSTRUCTION:

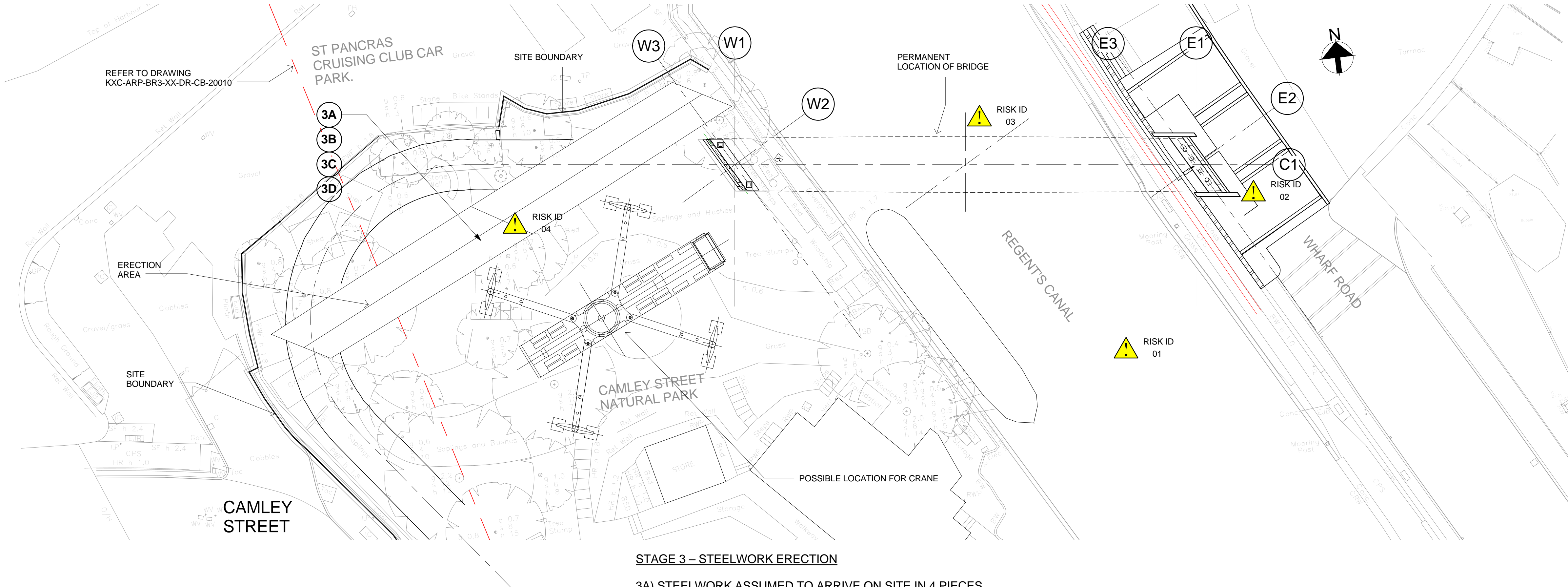
(NOTE STAGE 1 AND STAGE 2 MAY BE CARRIED OUT IN PARALLEL)

1A) COMPLETE EXCAVATIONS AND INSTALL THE PILES.
1B) CONSTRUCT RC PILE CAPS
1C) CONSTRUCT RC ABUTMENT WALLS



STAGE 2 – EAST ABUTMENT CONSTRUCTION:

2A) COMPLETE EXCAVATIONS INSIDE THE ARCH AND INSTALL THE PILES.
2B) COMPLETE EXCAVATIONS ABOVE THE ARCH AND CUT OUT THE EXISTING RC WALL.
2C) POUR MASS CONCRETE TO BOTTOM OF BEARING SHELF BEAM.
2D) CORE THE 300 DIA. HOLES IN THE BRICK ARCH.
2E) DRILL AND FIX THE HORIZONTAL ANCHORS.
2F) CONSTRUCT THE RC PILE CAP AND WALL INSIDE THE ARCH.
2G) CONSTRUCT THE RC COLUMNS THROUGH THE ARCH.
2H) CONSTRUCT THE RC BEARING SHELF.
2I) BACK FILL AROUND THE ABUTMENT.



STAGE 3 – STEELWORK ERECTION

3A) STEELWORK ASSUMED TO ARRIVE ON SITE IN 4 PIECES.
3B) ASSEMBLE ALL STEELWORK, INCLUDING PARAPET HANDRAILS, ON TEMPORARY TRESTLES WITH SITE WELDS.
3C) APPLY SURFACE FINISHES TO THE SITE WELD ZONES AND MAKE GOOD ANY DEFECTS IN THE SURFACE FINISHES.
3D) INSTALL TUNED MASS DAMPERS AND TUNE.

- NOTES:**
- FOR GENERAL NOTES REFER TO DRAWING KXC-ARP-BR3-XX-DR-CB-20003.
 - CRANE SIZE, DETAILS AND LOCATION ARE INDICATIVE AND PRELIMINARY ONLY. NO ASSESSMENTS FOR GROUND STABILITY FOR CRANE LOCATION AND SPREADER PADS HAVE BEEN CARRIED OUT. CONTRACTOR SHALL CARRY OUT ASSESSMENT OF THE STABILITY OF THE CRANE PLATFORM.
 - CONTRACTOR SHALL GAIN NETWORK RAIL APPROVALS FOR CRANING CLOSE TO RAILWAY TRACKS AND TO DEMONSTRATE THAT THE CRANE LOADS WILL NOT EXCEED THE TUNNEL SURCHARGE LIMITS DEFINED ON DRAWING KXC-ARP-BR3-XX-DR-CB-20005.
 - THE CONSTRUCTION METHODOLOGY EXHIBITED ON THIS DRAWING HAS BEEN ASSUMED IN THE DESIGN OF THE STRUCTURE. THE CONTRACTOR MAY ADOPT THIS METHODOLOGY OR PROPOSE AN ALTERNATIVE THAT IS SUBJECT TO ACCEPTANCE BY THE DESIGNER.
 - PROPOSALS INVOLVING TEMPORARY LOADS ON OR ADJACENT TO THE EXISTING COAL DROP ARCHES HAVE NOT BEEN ASSESSED. CONTRACTOR IS RESPONSIBLE FOR THE STABILITY OF THE ARCHES DUE TO PLANT LOADS AND INTERMEDIATE CONSTRUCTION STAGES.
 - THE BRIDGE IS DESIGNED TO SPAN SIMPLY SUPPORTED BETWEEN THE BEARINGS AT EACH END. IT IS ASSUMED THAT THE BRIDGE WILL BE SUPPORTED DURING LIFTING AND TRANSPORT IN A SIMILAR FASHION TO ITS PERMANENT CONDITION.

P02	05/02/16	DW	MH	IW
INFORMATION ONLY				
P01	22/01/16	DW	MH	IW
INFORMATION ONLY				
Rev	Date	By	Chkd	Appd

ARUP

13 Fitzroy Street
London W1T 4BS
Tel +44(0)20 7636 1531 Fax +44(0)20 7580 3924
www.arup.com



Project Title
**CAMLEY STREET
NATURAL PARK BRIDGE
(BR3)**

Drawing Title
**ASSUMED CONSTRUCTION
SEQUENCE
SHEET 1**

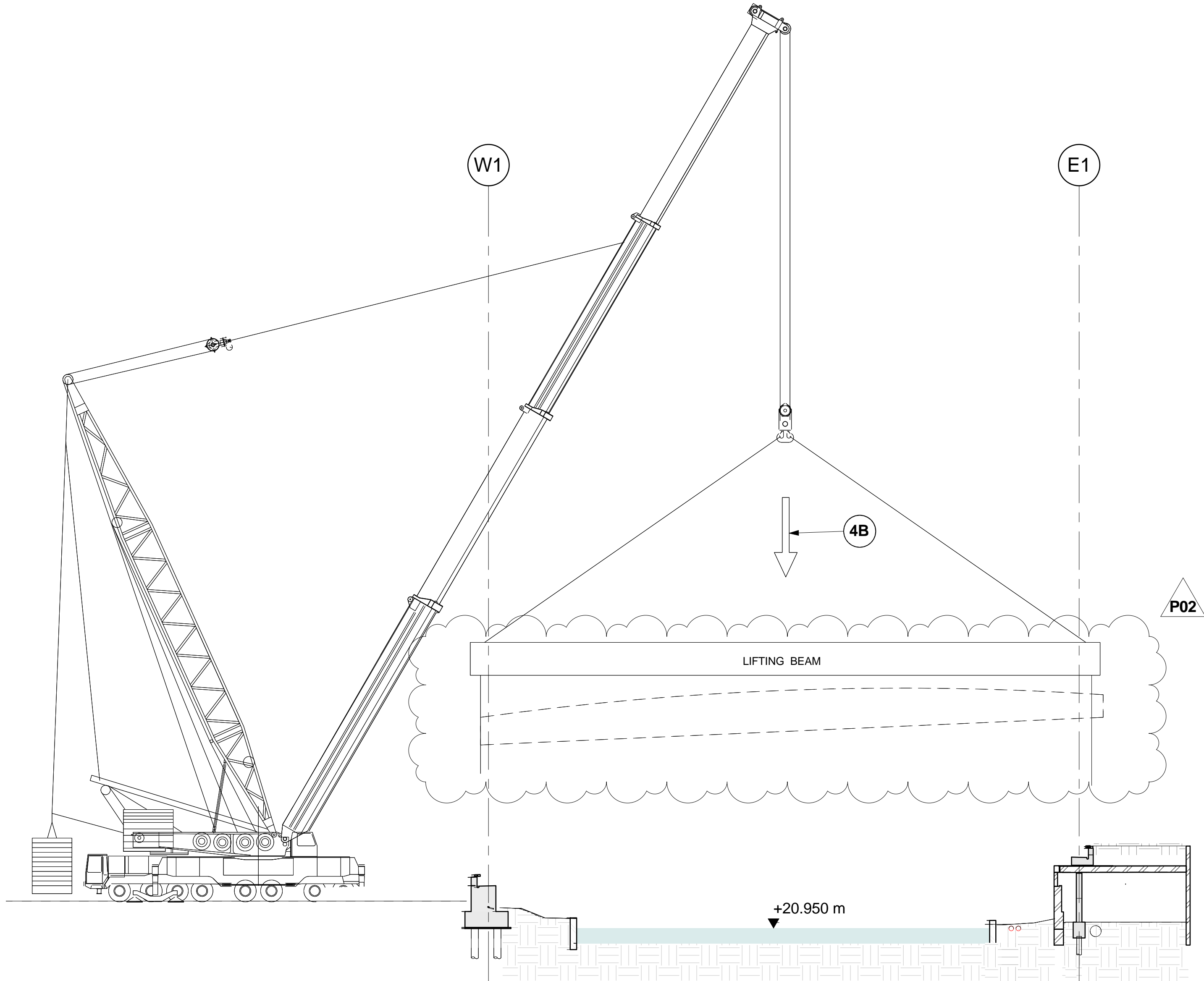
Scale at A1 N/A	
Drawing Status S2 - FOR INFORMATION	
Arup Job No 239454-00	Rev P02
Name KXC-ARP-BR3-XX-DR-CB-20010	

NOTES:

1. FOR GENERAL NOTES REFER TO DRAWING KXC-ARP-BR3-XX-DR-CB-20003.

2. FOR CONSTRUCTION SEQUENCE NOTES REFER TO DRG KXC-ARP-BR3-XX-DR-CB-20010

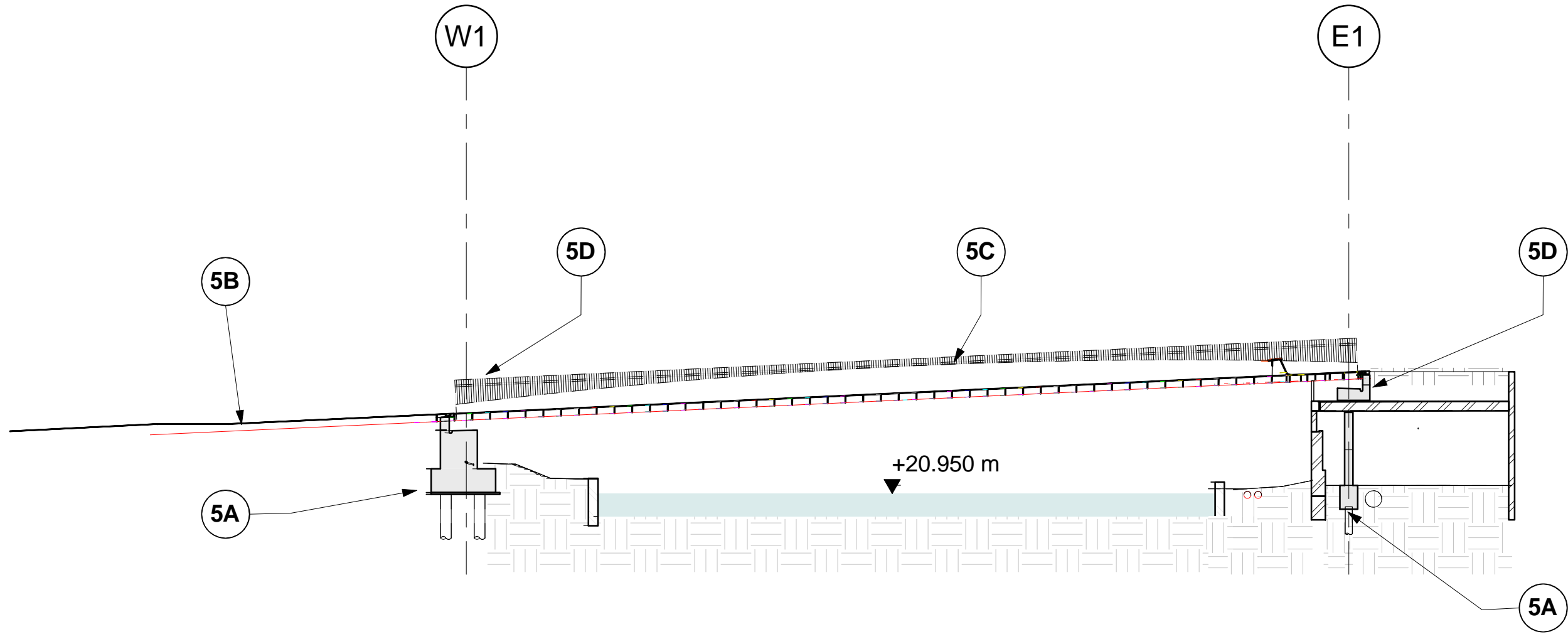
05/02/2016 16:44:26



STAGE 4 – BRIDGE LIFT

4A) LIFT BRIDGE STEELWORK FROM ASSEMBLY LOCATION.

4B) LOWER ONTO BEARING SHELF AND TEMPORARY BEARINGS.



STAGE 5 – FINISHING WORKS

5A) GROUT PERMANENT BEARINGS.

5B) BACKFILL THE WEST ABUTMENT.

5C) CARRY OUT TUNED MASS DAMPER TUNING PROCEDURE IN ACCORDANCE WITH THE PROJECT SPECIFICATION.


5D) INSTALL MOVEMENT JOINTS.

P02	03/02/16	DW	MH	IW
INFORMATION ONLY				
P01	22/01/16	DW	MH	IW
INFORMATION ONLY				
Rev	Date	By	Chkd	Appd

ARUP

13 Fitzroy Street
London W1T 4BQ
Tel +44(0)20 7636 1531 Fax +44(0)20 7580 3924
www.arup.com

Client



Project Title

CAMLEY STREET
NATURAL PARK BRIDGE
(BR3)

Drawing Title

ASSUMED CONSTRUCTION
SEQUENCE
SHEET 2

Scale at A1

1 : 200

Drawing Status

S2 - FOR INFORMATION

Arup Job No

239454-00

Rev

P02

Name

KXC-ARP-BR3-XX-DR-CB-20011

Do not scale

© Arup