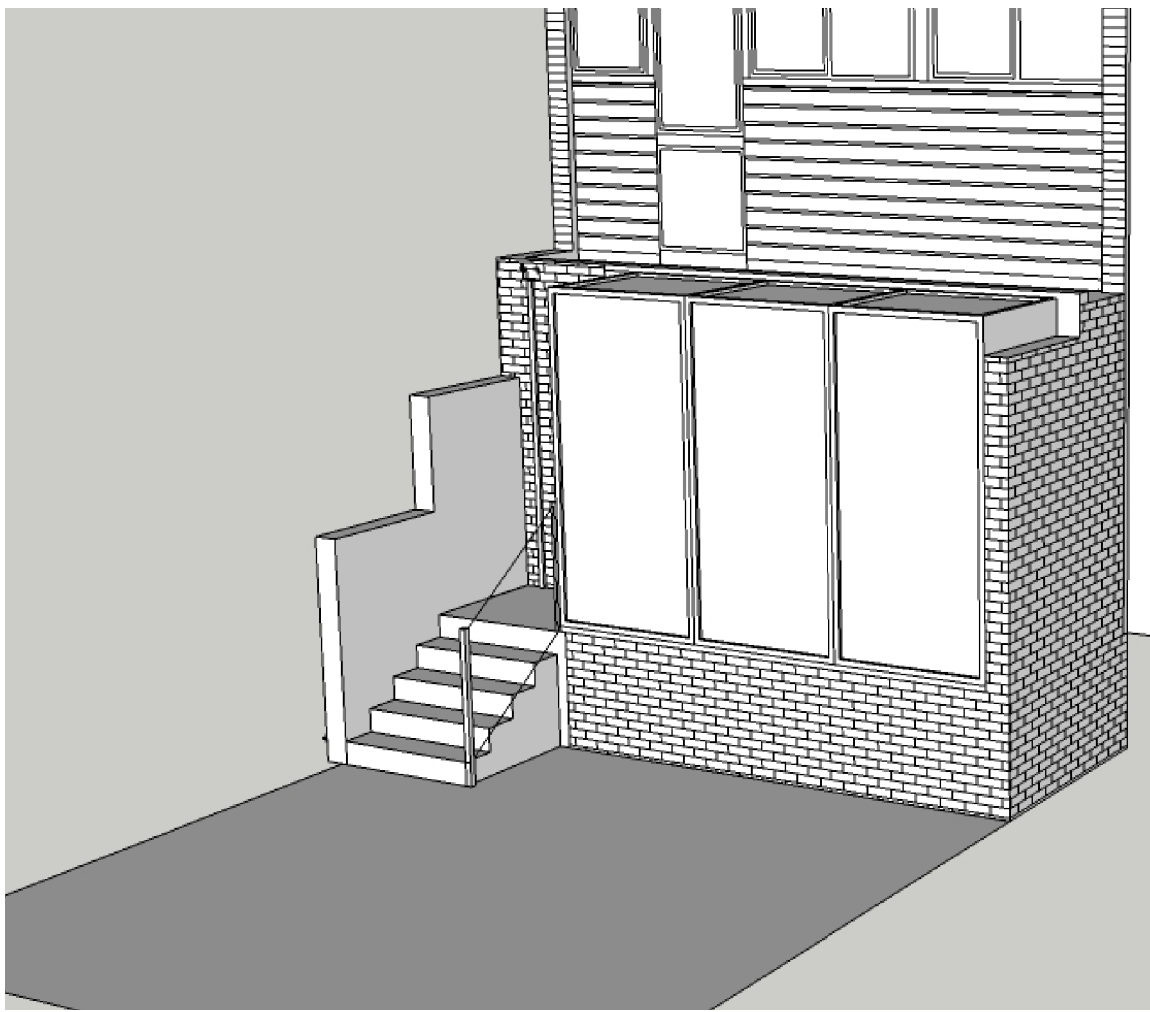
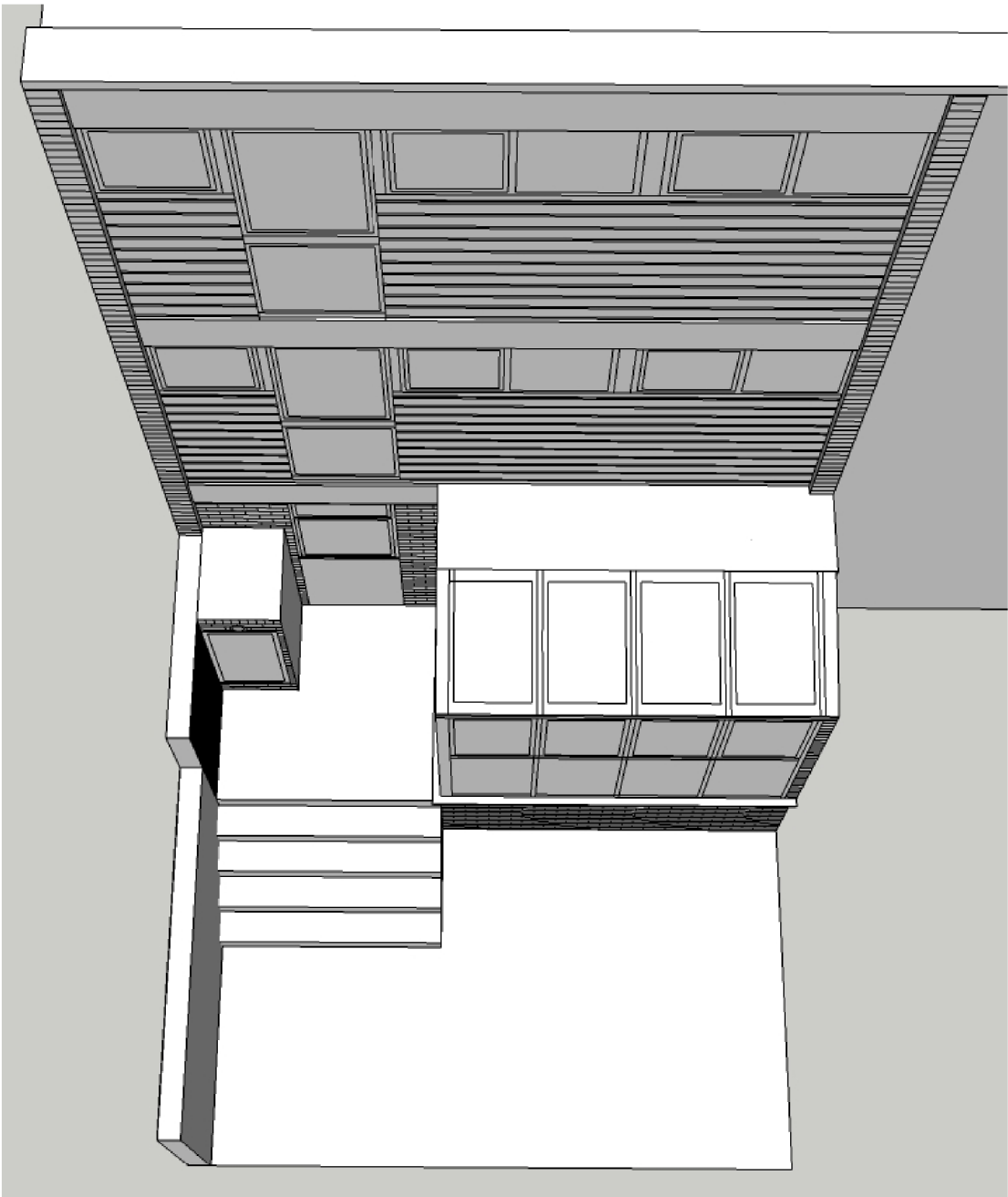


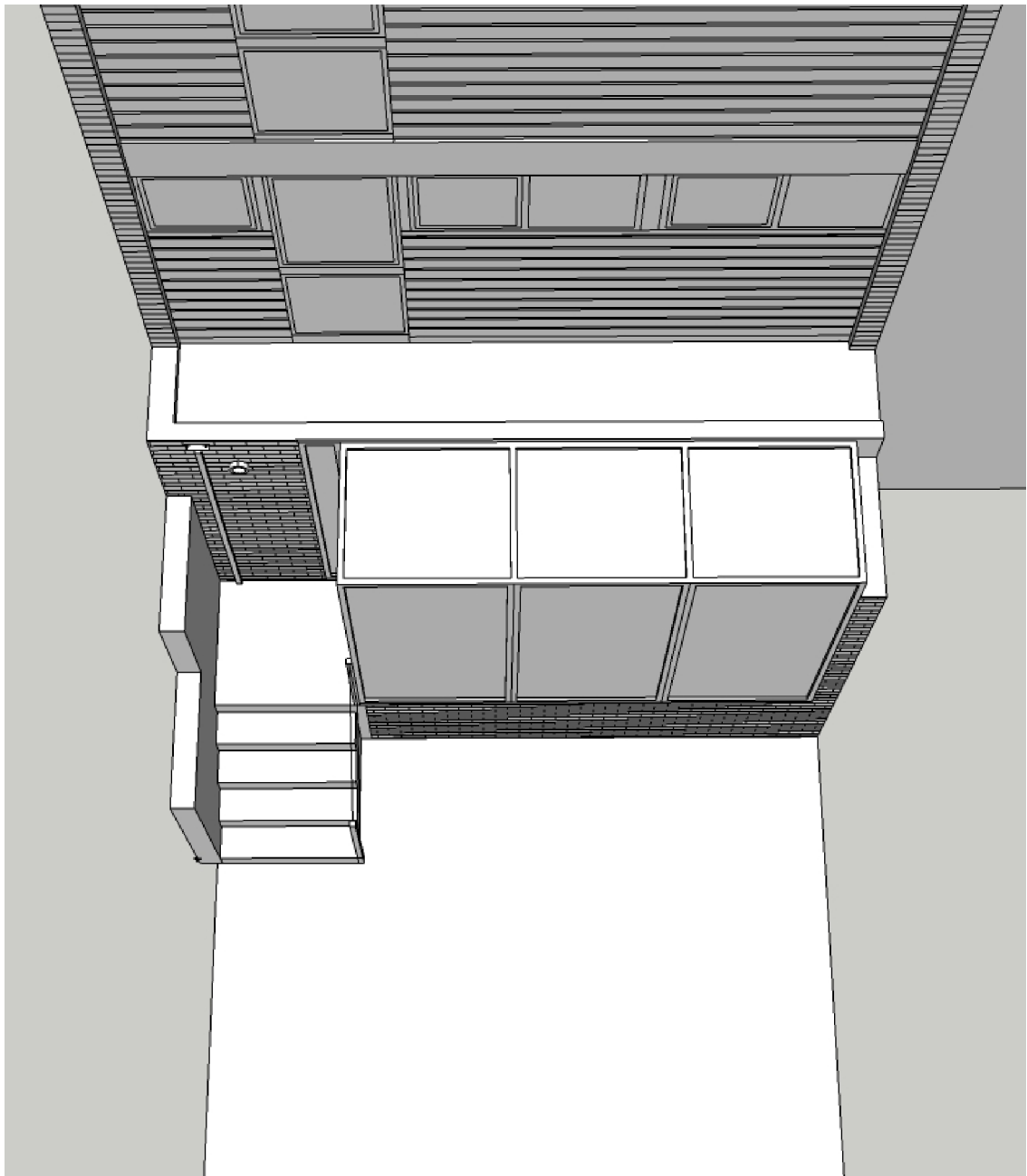
EXISTING VIEW FROM NO. 24



PROPOSED VIEW FROM NO. 24



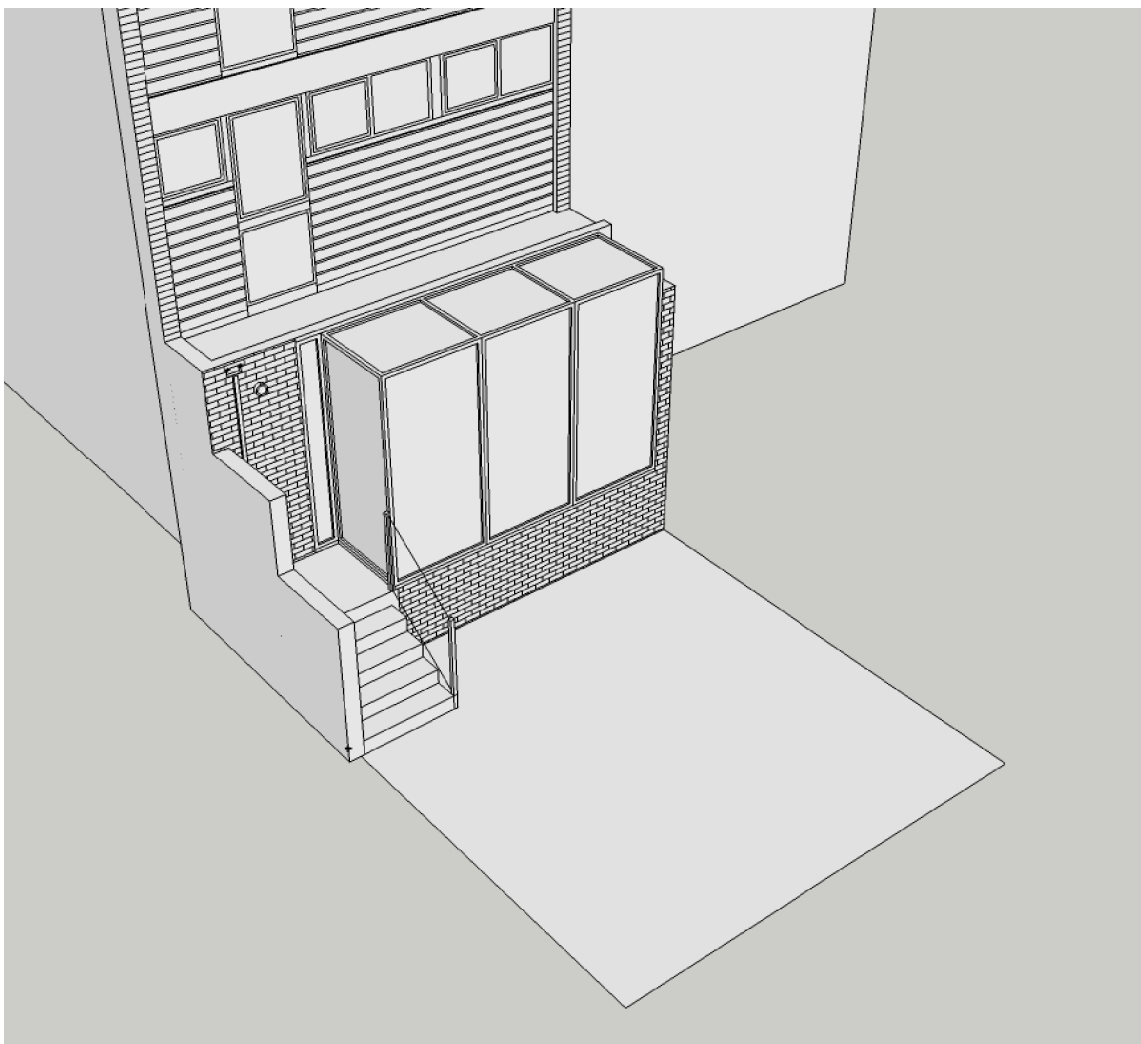
EXISTING VIEW FROM ABOVE



PROPOSED VIEW FROM ABOVE



EXISTING VIEW FROM NO. 26



PROPOSED VIEW FROM NO. 26

Formwork Architects Ltd. www.formwork.uk.com		Drawing Status:		Project: 25 Crossfield Road, London NW3 4NT	
47 St. John's Wood High St London NW8 7NJ		Revisions:		Title: Existing and proposed views of rear elevation	
tel. 020 7722 7069, fax. 020 7722 8314		A	03/03/16 Reduced size of brick extension; removed new balcony access to garden	Preliminary for Approval	A2
<div><div></div><div>Do not scale from this drawing. If no dimension is shown the recipient is to ascertain all the necessary dimensions directly from the Architect or by site measurement and may not rely on this drawing. Resolve all discrepancies prior to construction. If in doubt ASK This drawing is COPYRIGHT</div></div>		B		Design Approved by Client	
		C		Planning Drawing	
		D		Tender Drawing	
		E		Construction Drawing	
		F			
		Scale: Not to Scale		Date: 25/02/2016	A
		Drawing Number: KP/L/03			