



CAMBRIAN REDLAND SLATE TILES



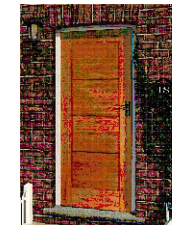
VELUX CONSERVATION ROOFLIGHT



JULIET BALCONY



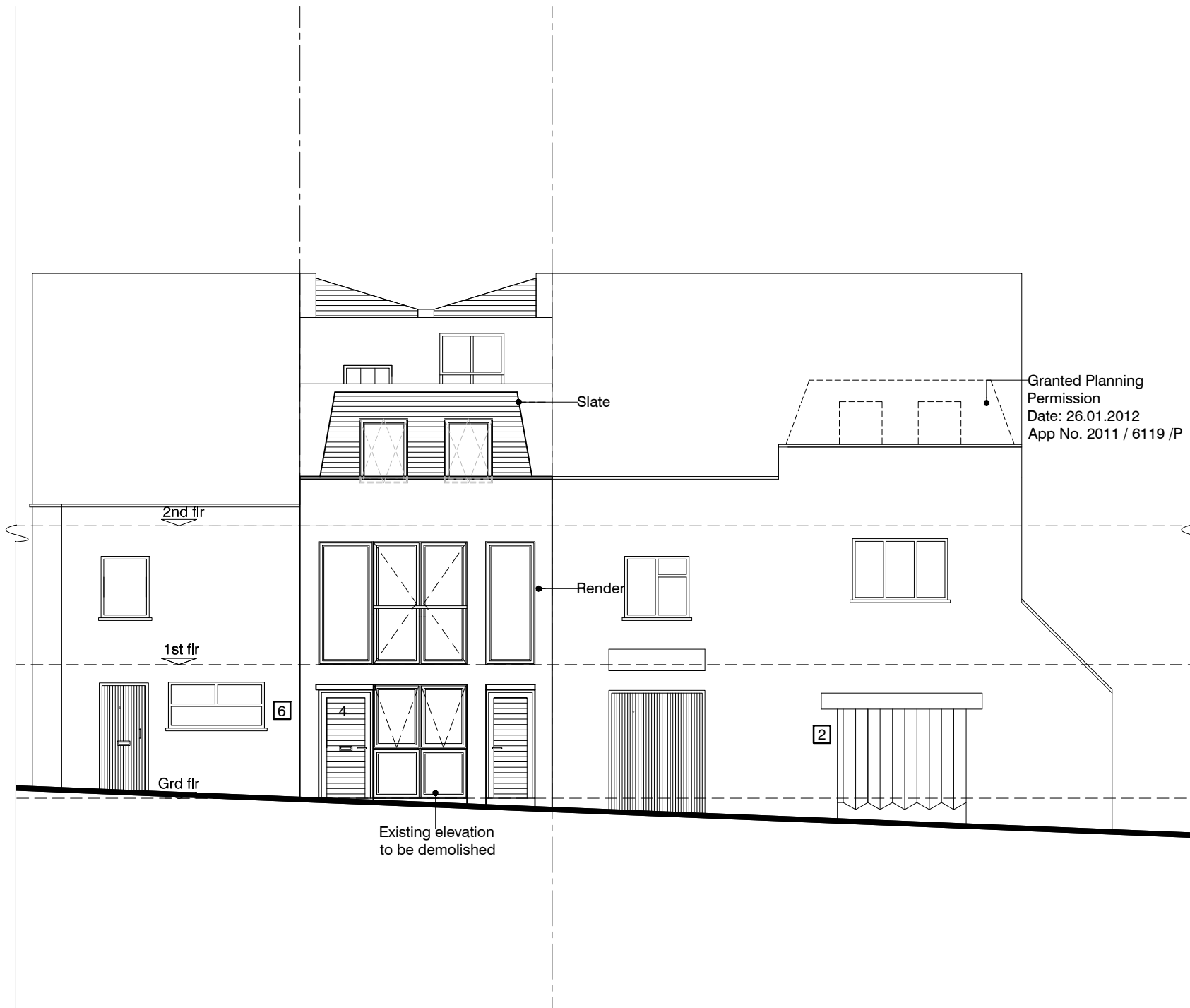
STAYFIX ALUMINIUM WINDOW RAL 7037



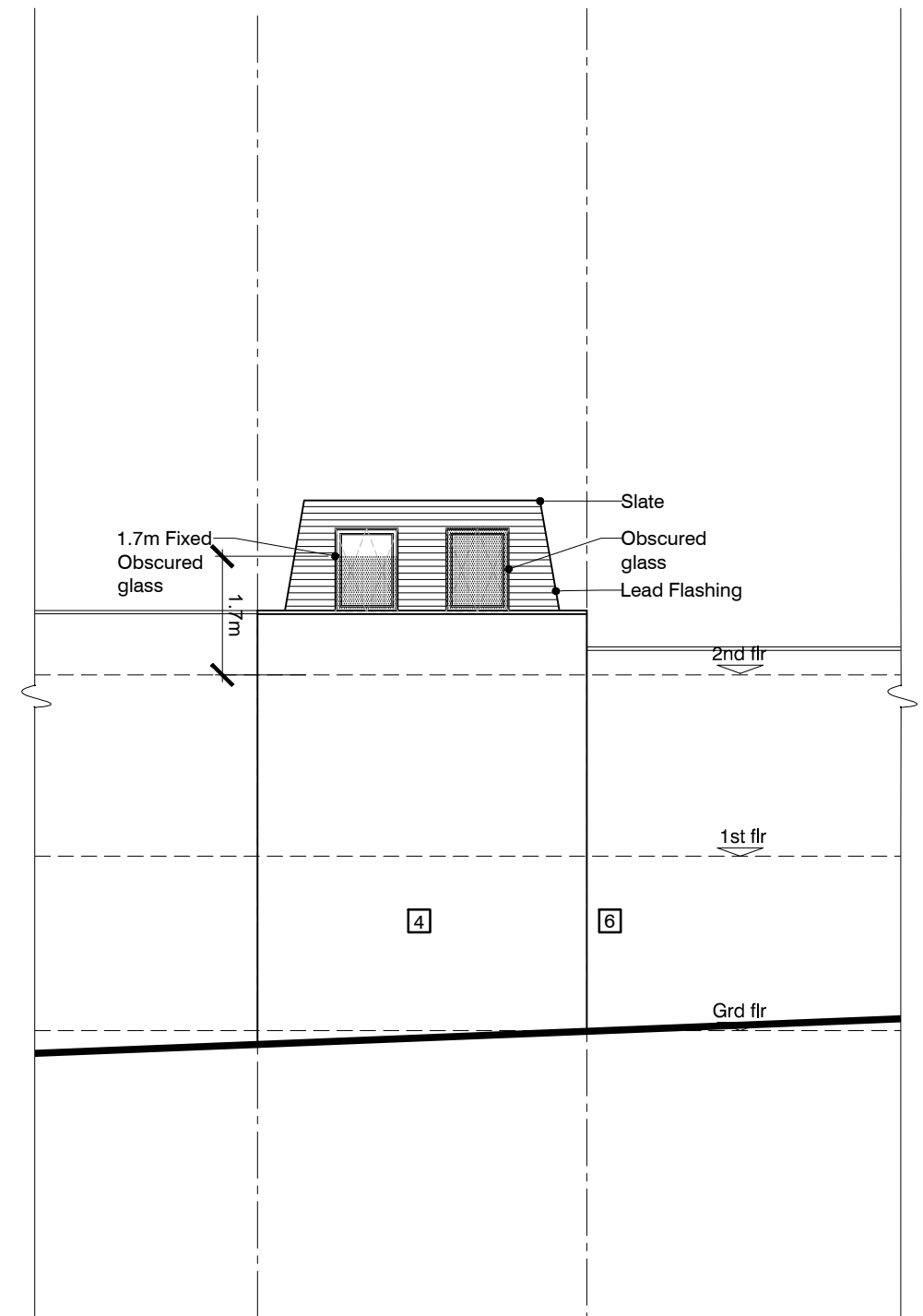
MODICA OAK EXTERNAL DOOR



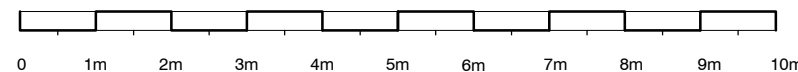
FINE GRADE WHITE RENDER



Proposed Front Elevation @ 1:100



Proposed Rear Elevation @ 1:100



NOTES			
1. This drawing is copyright of Studio V Architects			
2. Use figured dimensions only.			
J	01.03.16	MATERIALS UPDATED	KV
I	29.06.15	MATERIALS ADDED	KV
H	16.07.13	GLAZING BETWEEN GRD & 1st FLOOR REMOVED	KV
G	27.06.13	ROOF REDUCED	KV
F	23.04.13	WINDOWS ON 2nd FLOOR ALIGNED	KV
E	22.01.13	DEPTH OF 2ND FLOOR REDUCED	KV
D	14.11.12	NUMBERING UPDATED	KV
C	24.10.12	DRAWINGS UPDATED TO PLANNING CONSULTANT'S ADVICE	KV
B	17.10.12	DRAWINGS UPDATED TO PLANNER'S REQUIREMENTS	KV
A	19.07.12	DEMOLITION NOTES ADDED	KV
rev.	date	drn	aud
drawing status: PLANNING			

studio V Architects

224 west hendon

london

T: 020 8

F: 020 8

website: www.studioVarchi
e-mail: info@studioVarchi

project 4 HERMIT PLACE LONDON, NW6 4BZ	drawn BC	audited KV	scale 1:100 @ A3	date API
drg title PROPOSED ELEVATIONS	job no. 1211	drg.no. PL06	rev	

FILE:

XREFs: