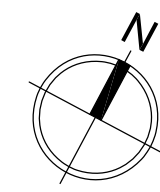
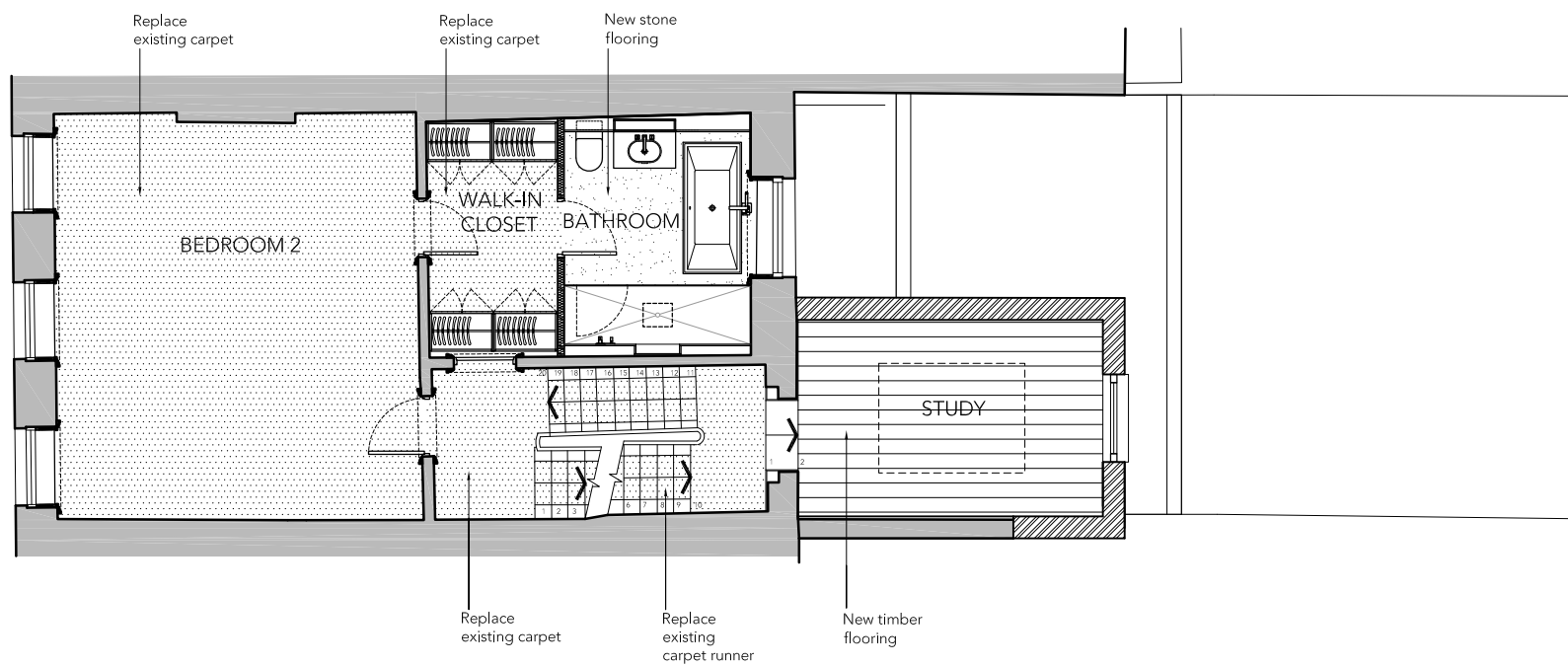


NOTE
 DO NOT SCALE FROM THIS DRAWING, EXCEPT FOR TOWN PLANNING PURPOSES.
 THIS DRAWING IS THE PROPERTY OF TG STUDIO AND COPYRIGHT IS RESERVED BY THEM.
 THIS DRAWING IS ISSUED ON CONDITION THAT IT IS NOT REPRODUCED, USED OR DISCLOSED BY
 OR TO ANY UNAUTHORIZED PERSON WITHOUT THE PRIOR CONSENT OF TG STUDIO.
 THE AREAS ON THIS DRAWING HAVE BEEN CALCULATED FROM A CAD DRAWING AND HAVE NO
 TOLERANCES ADDED OR SUBTRACTED.

REVISIONS - PLANNING SUBMISSION

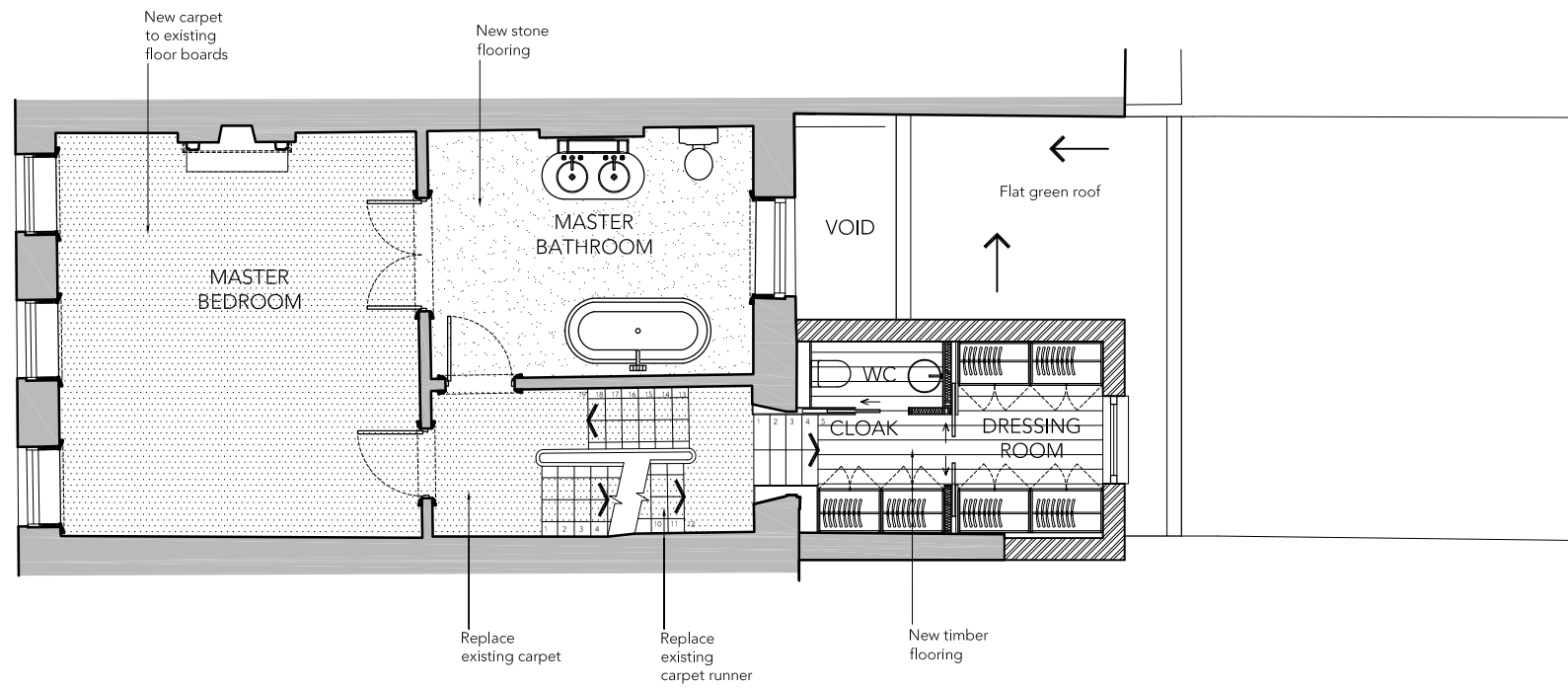
DATE 12.02.2016



LEGEND

	Polished concrete flooring
	Stone flooring
	Tiled flooring
	New timber floor boards
	External timber decking
	Structural glass
	Carpet

1 PROPOSED FLOOR FINISHES TO SECOND FLOOR
 scale 1:100



2 PROPOSED FLOOR FINISHES TO FIRST FLOOR
 scale 1:100



10 RATHBONE PLACE, LONDON W1T 1HP T 020 7636 3838 F 020 7636 5659 WWW.TG-STUDIO.CO.UK

PROJECT 47 DOUGHTY STREET
 LONDON WC1N 2LW

DRAWING PROPOSED FLOOR FINISHES
 TO FIRST & SECOND FLOOR

DATE 04.02.2016 DRAWN BY EG CHECKED BY TG

STATUS PLANNING SCALE @ A3 1:100

JOB NO. 163 DWG NO. A-321 REV -