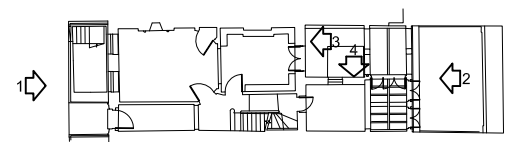


NOTE
DO NOT SCALE FROM THIS DRAWING, EXCEPT FOR TOWN PLANNING PURPOSES.
THIS DRAWING IS THE PROPERTY OF TG STUDIO AND COPYRIGHT IS RESERVED BY THEM.
THIS DRAWING IS ISSUED ON CONDITION THAT IT IS NOT REPRODUCED USED OR DISCLOSED BY
OR TO ANY UNAUTHORIZED PERSON WITHOUT THE PRIOR CONSENT OF TG STUDIO.
THE AREAS ON THIS DRAWING HAVE BEEN CALCULATED FROM A CAD DRAWING AND HAVE NO
TOLERANCES ADDED OR SUBTRACTED.

REVISIONS
- PRE-PLANNING
A PLANNING SUBMISSION
DATE
18.09.2015
19.02.2016



ELEVATION LOCATION PLAN



STUDIO
Architecture & Interior Design

10 RATHBONE PLACE, LONDON W1T 1HP T 020 7636 3838 F 020 7636 5659 WWW.TG-STUDIO.CO.UK

PROJECT
47 DOUGHTY STREET, LONDON WC1N 2LW

DRAWING
EXISTING FRONT ELEVATION

DATE 19.02.2016 DRAWN BY EG CHECKED BY TG

STATUS PLANNING SCALE @ A3 1:100

JOB NO. 163 DWG NO. A-210 REV A

1 EXISTING FRONT ELEVATION
scale 1:100

