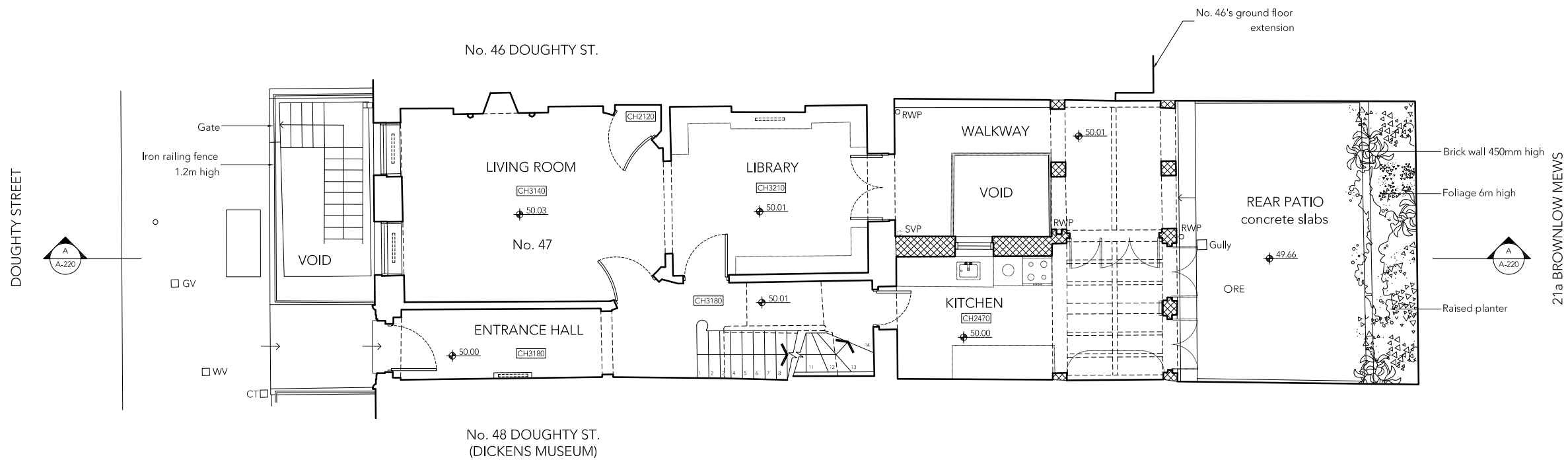


NOTE
DO NOT SCALE FROM THIS DRAWING, EXCEPT FOR TOWN PLANNING PURPOSES.
THIS DRAWING IS THE PROPERTY OF TG STUDIO AND COPYRIGHT IS RESERVED BY THEM.
THIS DRAWING IS ISSUED ON CONDITION THAT IT IS NOT REPRODUCED USED OR DISCLOSED BY
OR TO ANY UNAUTHORIZED PERSON WITHOUT THE PRIOR CONSENT OF TG STUDIO.
THE AREAS ON THIS DRAWING HAVE BEEN CALCULATED FROM A CAD DRAWING AND HAVE NO
TOLERANCES ADDED OR SUBTRACTED.

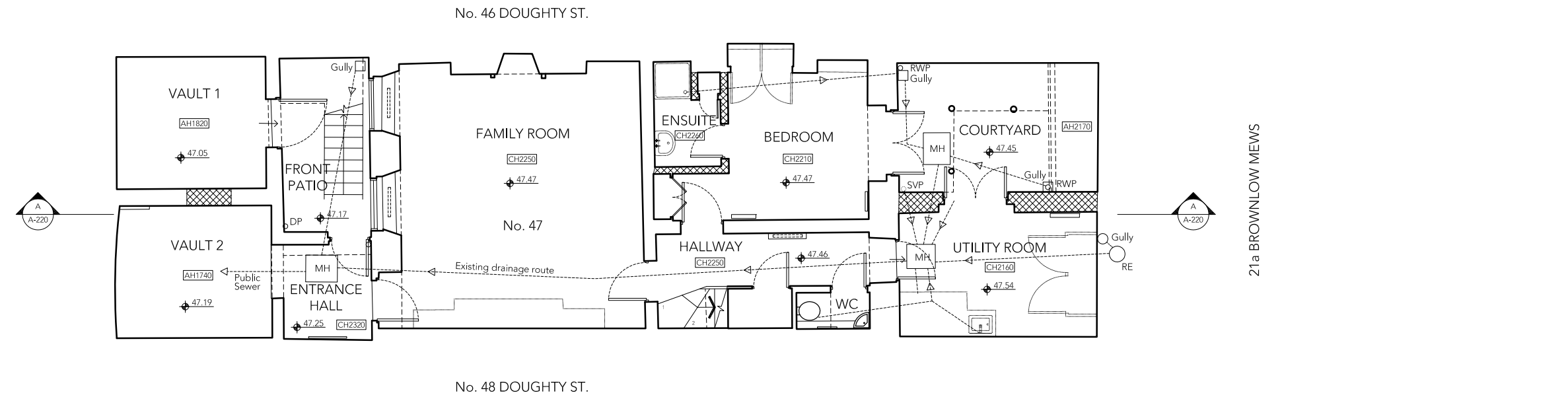
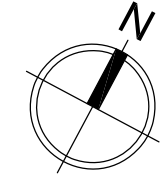
REVISIONS - PRE-PLANNING DATE 18.09.2015
A PLANNING SUBMISSION DATE 19.02.2016



1 EXISTING GROUND FLOOR PLAN
scale 1:100

LEGEND

	Existing structures
	Structures to be demolished
	Ceiling height
	Arch height



2 EXISTING BASEMENT PLAN
scale 1:100



10 RATHBONE PLACE, LONDON W1T 1HP T 020 7636 3838 F 020 7636 5659 WWW.TG-STUDIO.CO.UK

PROJECT 47 DOUGHTY STREET, LONDON WC1N 2LW

DRAWING EXISTING BASEMENT & GROUND FLOOR PLAN

DATE 19.02.2016 DRAWN BY EG CHECKED BY TG

STATUS PLANNING SCALE @ A3 1:100

JOB NO. 163 DWG NO. A-200 REV A