

# Wah Szeto

BSc (Hons), MSc, DIC, CEng MStructE  
Associate Director

Wah has worked at AKT since 1997, gaining a reputation for technical prowess, attention to detail and work of the highest quality. His expertise extends from cutting-edge foundation design to engineering complex steel and concrete superstructures.

Born in Hong Kong, Wah graduated with first class honours in civil engineering from City University in 1979. He joined Wimpey's civil and structural engineering design department, before completing an MSc in soil mechanics and seismology at Imperial College, University of London. Wah then joined structural engineer Anthony Hunt Associates and subsequently multidisciplinary practice Aukett before joining AKT in 1997.

As a result, Wah has worked on complex projects devising both foundation and superstructure solutions and has gained experience of all stages of the building process from research and concept through to procurement and construction.

He is a Chartered Engineer and a Member of the Institution of Structural Engineers.

Several current projects highlight Wah's experience and expertise. At The

Francis Crick Institute, a £360m medical research laboratory development under construction in London's King's Cross, Wah was Resident Engineer for the critical substructure works.

Designed by HOK International, this huge and complex project which includes a four-storey basement founded on large diameter, deep bored piles, demands very tight construction tolerances which meant total focus on quality, design compliance and attention to detail.

More recently Wah worked as Resident Engineer for the Client Monitoring Team during the critical substructure works at 240 Blackfriars Road. This £80m, 20-storey steel-framed building is located on a constrained site with multiple subterranean obstructions.

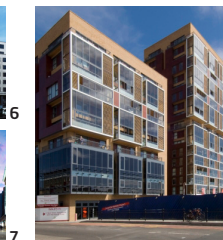
Wah also worked on Cadogan Mansions, carrying out monitoring responsibilities

on behalf of the client. The landmark project included significant basement works directly on top of London Underground tunnels. Meanwhile, at Park House on Oxford Street, Wah addressed complex structural design challenges associated with building metres from the Central line.

As a result of his significant expertise and attention to detail, Wah's current role includes the training and monitoring of AKT's in-house site based staff across all major projects.

## Key experience

- 1 Peckham Library, London
- 2 Chobham Academy, London
- 3 007 Stage,
- 4 Cadogan Mansions, London
- 5 The Francis Crick Institute, London
- 6 Finsbury Square, London
- 7 Park House, London
- 8 Dalston Square, London



## Experience summary

### Commercial Office

- 240 Blackfriars Road, London
- Financial Tower, Trinidad
- Crusader House, City of London
- 60 Sloane Avenue, London
- Doxford Business Park Phase IV
- Finsbury Square, London
- Park House, London
- Bucklersbury House, London
- Bond Street House, London
- Rathbone Place
- Amnesty International Headquarters
- Stokesley Business Park
- 78 - 87 Fenchurch Street, London

### Retail

- Bolton Shopping Centre
- Marlands Shopping Centre, Southampton
- ASDA Concept Store
- ASDA Store, Chester
- Hugo Boss Sloane Square Fit Out

### Leisure & Sport

- BBC White City, London
- Imax Theatre, Waterloo
- Warwick Road Aparthotel
- 007 Stage, Pinewood & Shepperton Studios
- Deluxe Head Quarter, Pinewood Studio

### Education

- Slade School Refurbishment, University College, London
- New Sculpture Studio, University College, London
- Chalton Street Gymnasium, University College, London
- Birbeck College, Gresse Street, London
- Bedford Music School
- HM Sultan Mess Conversion, Portsmouth
- Peckham Library, London
- Brunel University Phase 6
- Chobham School - Olympic Village

### Healthcare

- The Francis Crick Institute, London
- 500-bed Royal Hospital of Oman
- Private Hospital, Brunei
- Rochford Mental Hospital

### Transport

- Roll on Roll Off Terminal, Aqaba
- Jetty and Mooring Dolphins, Immingham
- Hanger Refurbishment, United Airlines, Heathrow
- Acoustic Wall Extension Terminal 4, Heathrow

### Bridge

- Plot N12 Footbridge - Olympic Village

### Industrial

- Base Isolation in Seismic Design, Computer Analysis
- Potash Plant, Aqaba
- Daily Telegraph New Printing Press, London Docklands
- Trafford Park Industrial Park, Manchester
- Incom Telecommunication Office, Manchester