

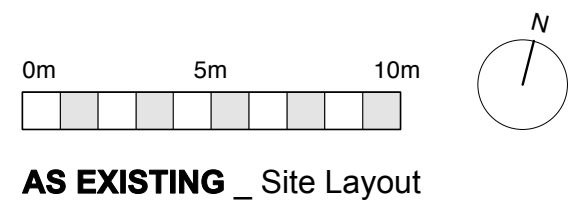
General Notes
 All dimensions to be verified on site
 To be read in conjunction with all relevant documents
 In the event of discrepancy notify the Architect immediately
 This document is copyright of Hugh Cullum Architects Ltd

Issue Status

SK	Sketch	E	Existing Condition
D	Design	P	Permissions
T	Tender	C	Contract

--- Site Boundary line

(_): Issued for Planning Application (24.02.16/GW)
 Revision: Information (date/drawn by/checked by)





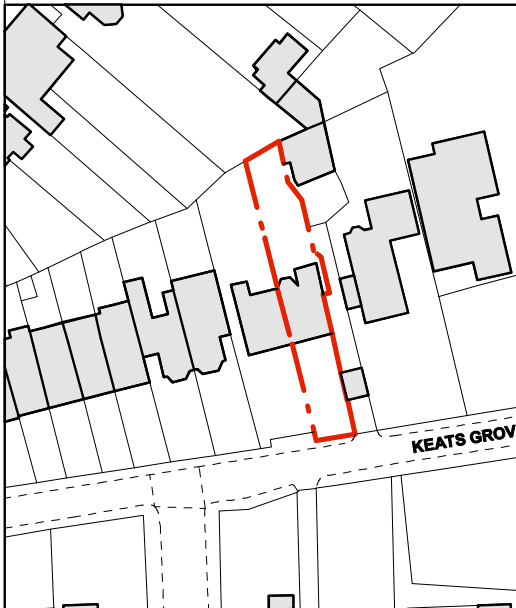
HUGH CULLUM ARCHITECTS LTD
 Bloomsbury Design
 61b Judd Street
 London WC1H 9QT
 t 020 7383 7647
 f 020 7387 7645
 mail@hughcullum.com

15 Keats Grove
 Existing
 Site Plan
 1:200@A3 February 2016
 KG015-E002(_)

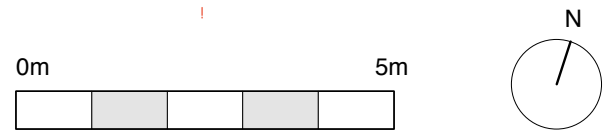
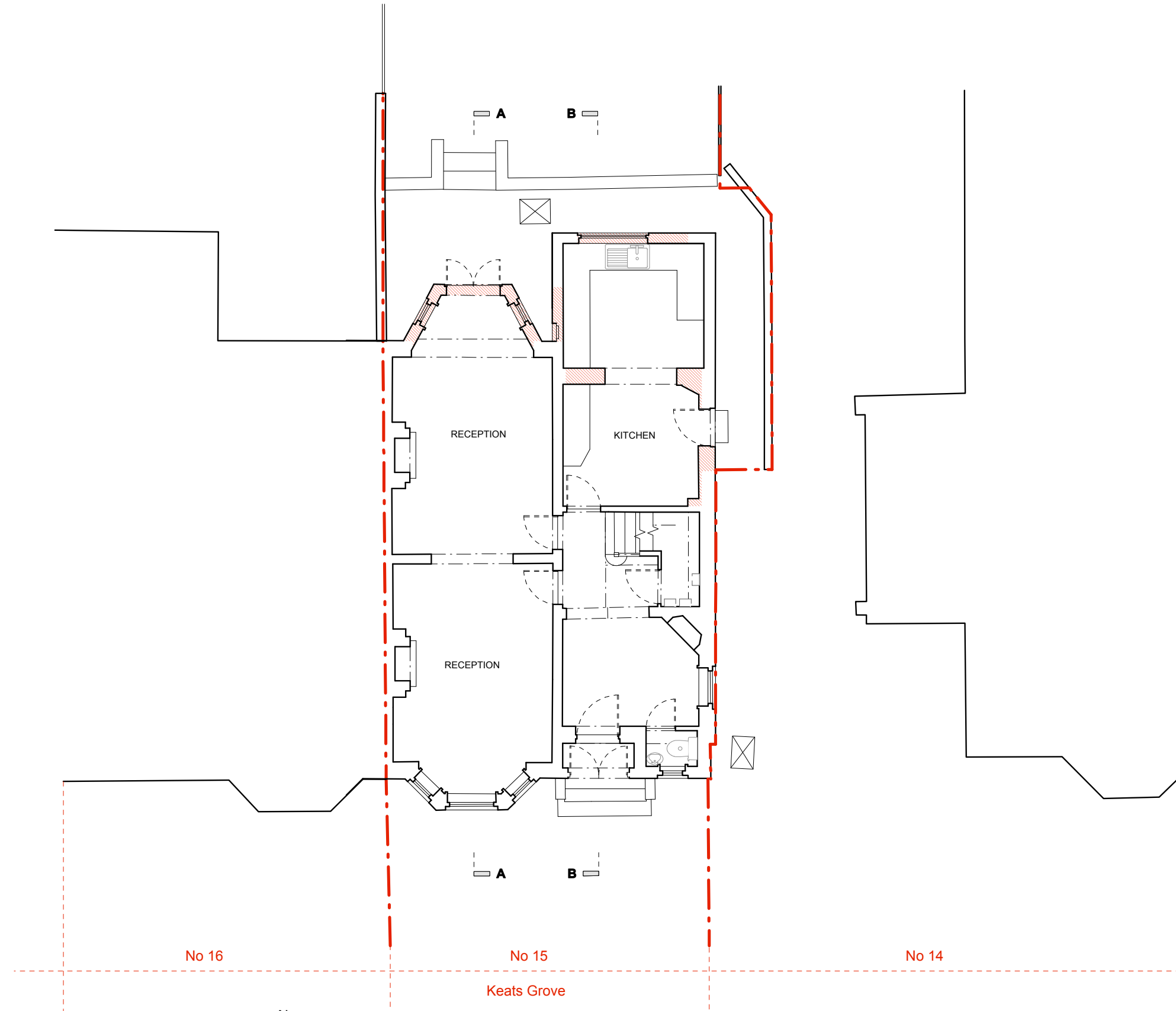
General Notes
 All dimensions to be verified on site
 To be read in conjunction with all relevant documents
 In the event of discrepancy notify the Architect immediately
 This document is copyright of Hugh Cullum Architects Ltd

Issue Status
 SK Sketch E Existing Condition
 D Design P Permissions
 T Tender C Contract

 Demolition
 Site Boundary line



(_): Issued for Planning Application (24.02.16/GW)
 Revision: Information (date/drawn by/checked by)





AS EXISTING _ Ground Floor Layout

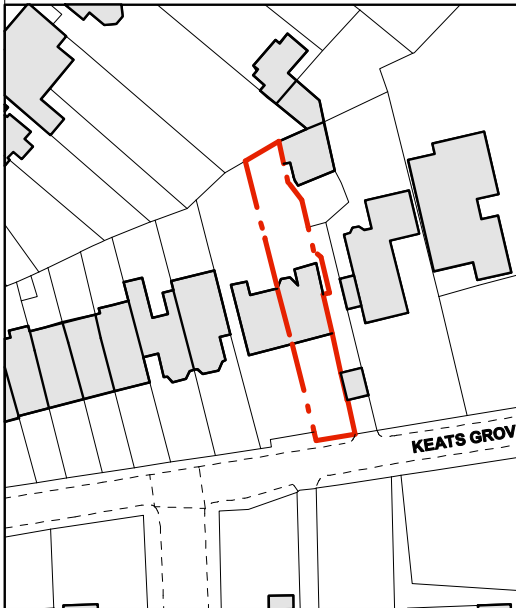
HUGH CULLUM ARCHITECTS LTD
 Bloomsbury Design
 61b Judd Street
 London WC1H 9QT
 t 020 7383 7647
 f 020 7387 7645
 mail@hughcullum.com

15 Keats Grove
 Existing
 Ground Floor Plan
 1:100@A3 February 2016
KG015-E003(_)

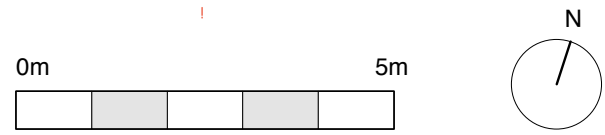
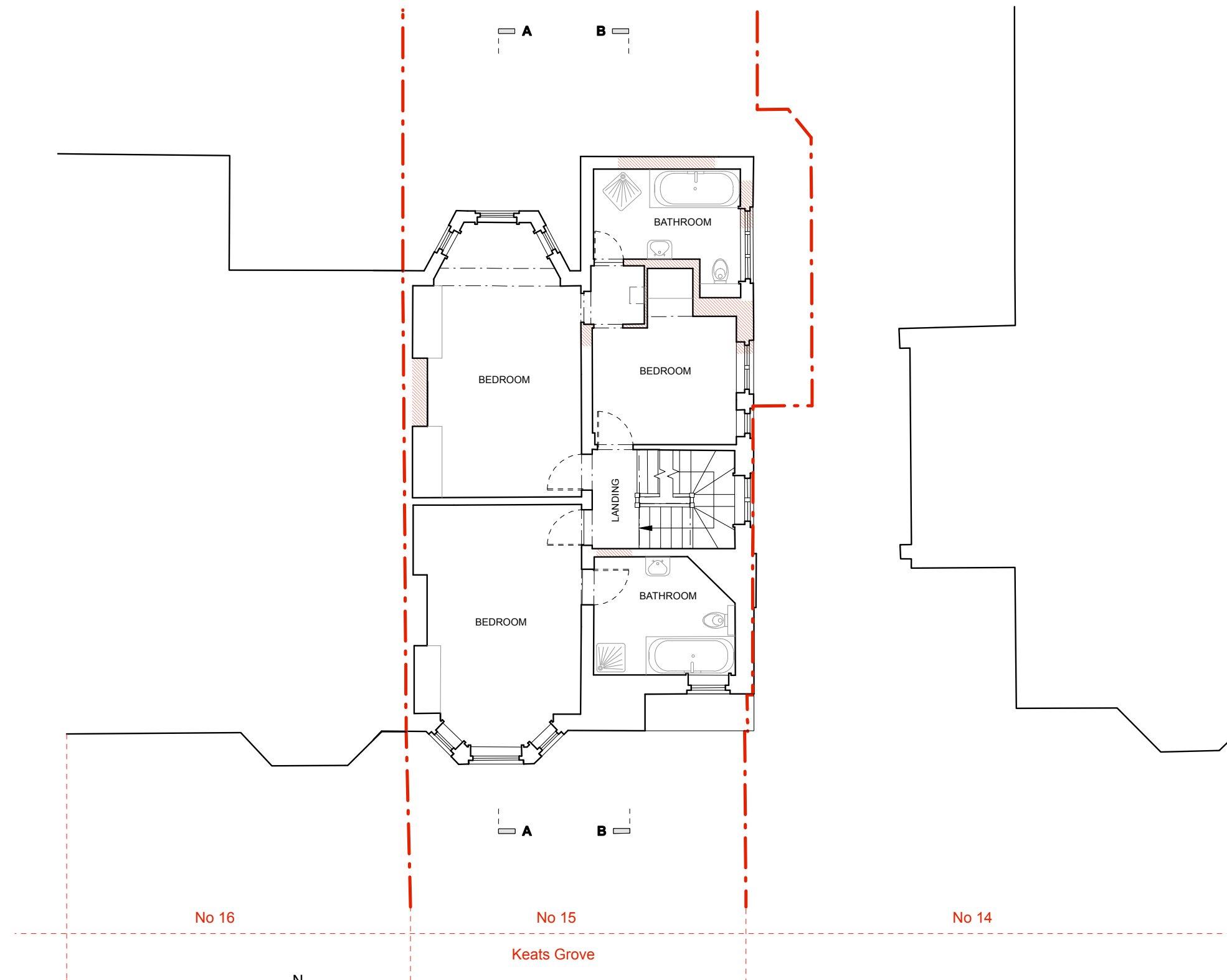
General Notes
 All dimensions to be verified on site
 To be read in conjunction with all relevant documents
 In the event of discrepancy notify the Architect immediately
 This document is copyright of Hugh Cullum Architects Ltd

Issue Status
 SK Sketch E Existing Condition
 D Design P Permissions
 T Tender C Contract

 Demolition
 Site Boundary line



(_): Issued for Planning Application (24.02.16/GW)
 Revision: Information (date/drawn by/checked by)





AS EXISTING _ First Floor Layout

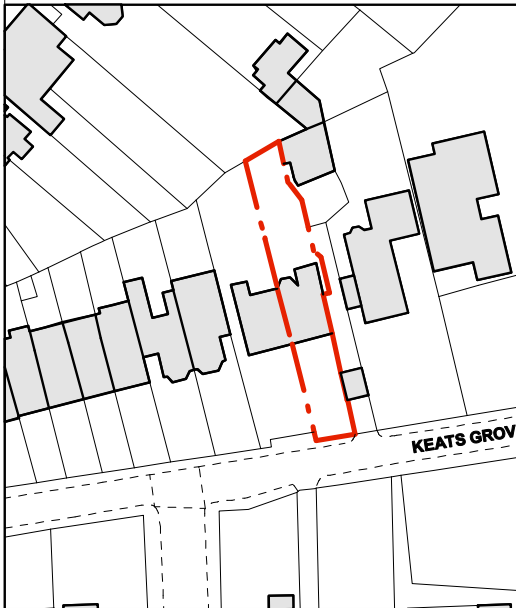
HUGH CULLUM ARCHITECTS LTD
 Bloomsbury Design
 61b Judd Street
 London WC1H 9QT
 t 020 7383 7647
 f 020 7387 7645
 mail@hughcullum.com

15 Keats Grove
 Existing
 First Floor Plan
 1:100@A3 February 2016
 KG015-E004(_)

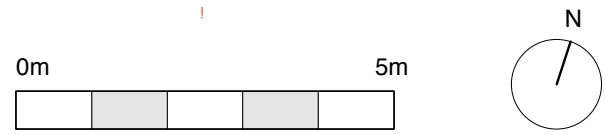
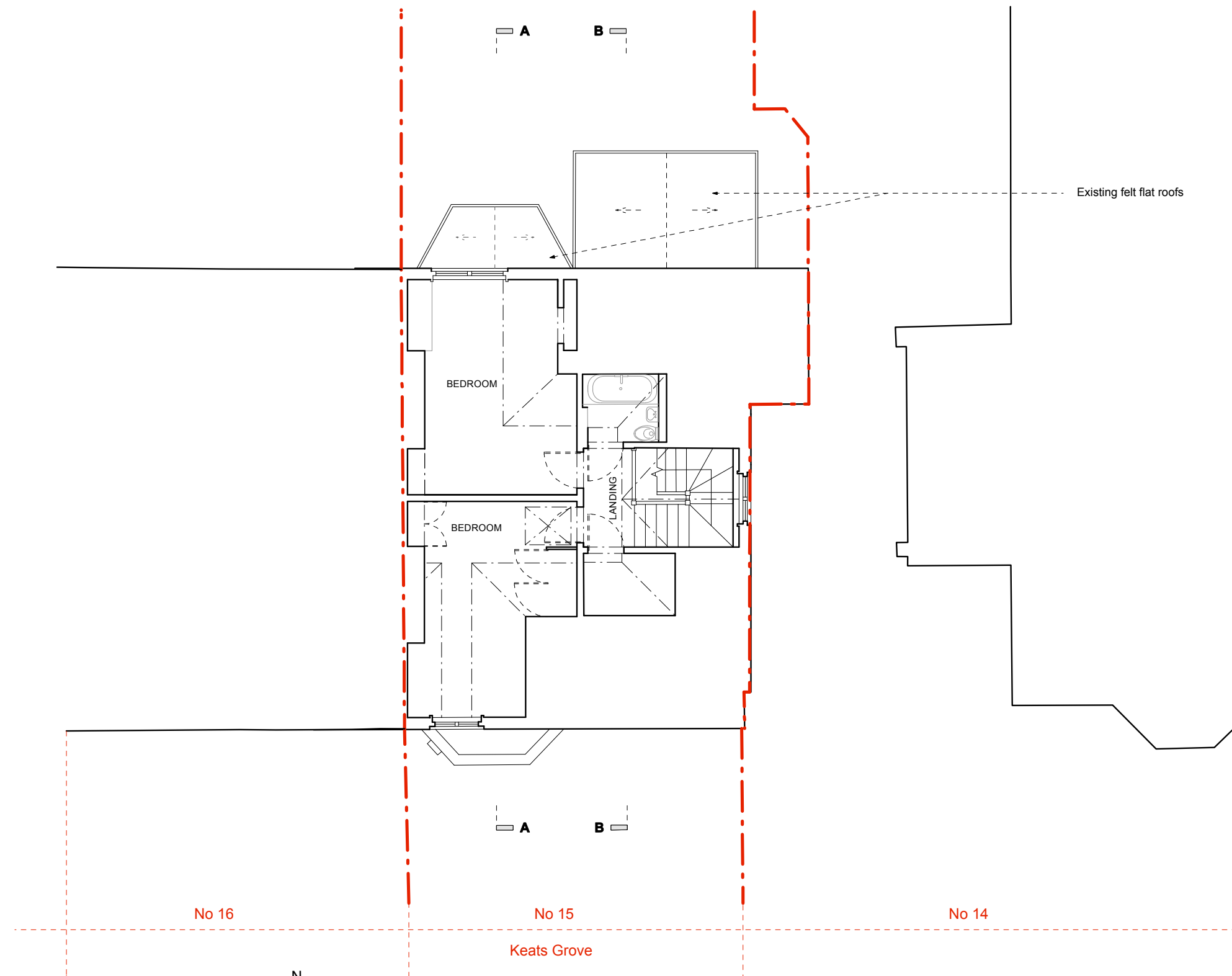
General Notes
 All dimensions to be verified on site
 To be read in conjunction with all relevant documents
 In the event of discrepancy notify the Architect immediately
 This document is copyright of Hugh Cullum Architects Ltd

Issue Status
 SK Sketch E Existing Condition
 D Design P Permissions
 T Tender C Contract

 Demolition
 Site Boundary line



(_): Issued for Planning Application (24.02.16/GW)
 Revision: Information (date/drawn by/checked by)



AS EXISTING _ Second Floor Layout



HUGH CULLUM ARCHITECTS LTD
 Bloomsbury Design
 61b Judd Street
 London WC1H 9QT
 t 020 7383 7647
 f 020 7387 7645
 mail@hughcullum.com

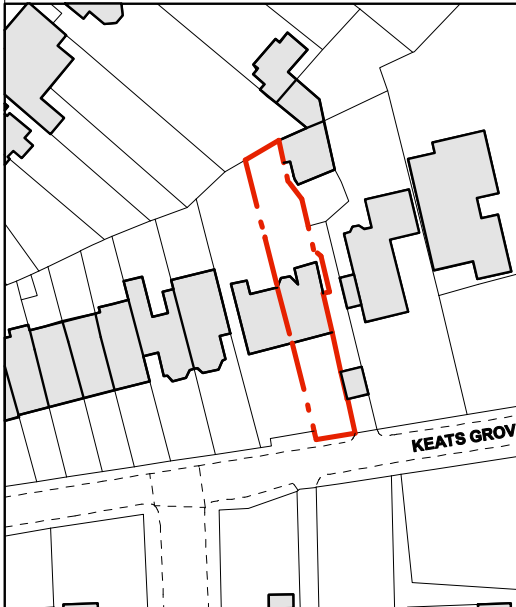
15 Keats Grove
 Existing
 Second Floor Plan
 1:100@A3 February 2016
 KG015-E005(_)

General Notes
 All dimensions to be verified on site
 To be read in conjunction with all relevant documents
 In the event of discrepancy notify the Architect immediately
 This document is copyright of Hugh Cullum Architects Ltd

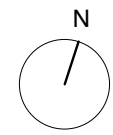
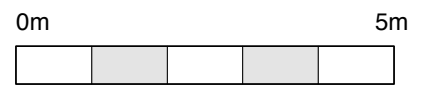
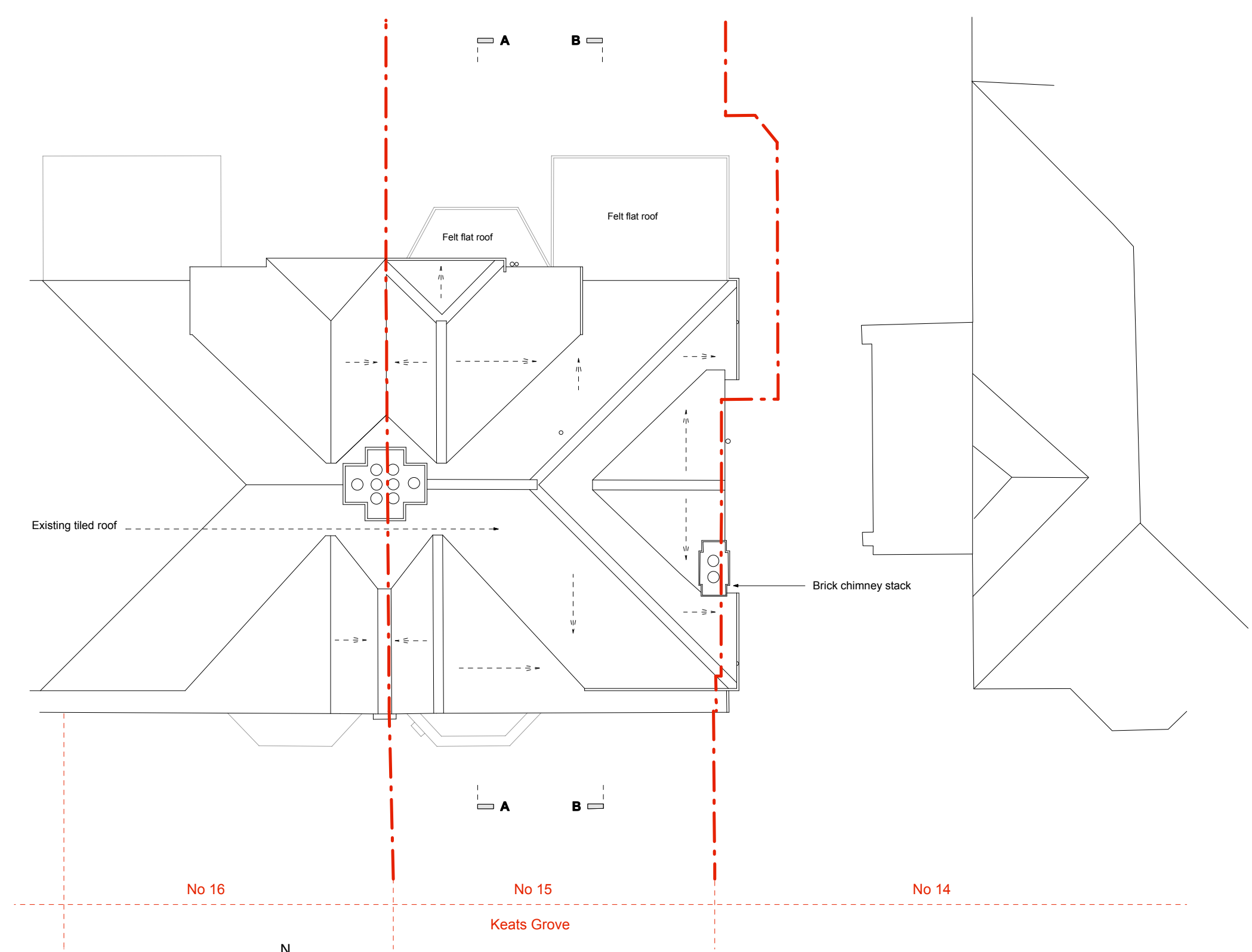
Issue Status
 SK Sketch
 D Design
 T Tender

E Existing Condition
 P Permissions
 C Contract

 Demolition
 Site Boundary line



(_) : Issued for Planning Application (24.02.16/GW)
 Revision: Information (date/drawn by/checked by)



AS EXISTING _ Roof Layout

HUGH CULLUM ARCHITECTS LTD
 Bloomsbury Design
 61b Judd Street
 London WC1H 9QT
 t 020 7383 7647
 f 020 7387 7645
 mail@hughcullum.com

15 Keats Grove
 Existing
 Roof Plan
 1:100@A3 February 2016
 KG015-E006(_)


General Notes

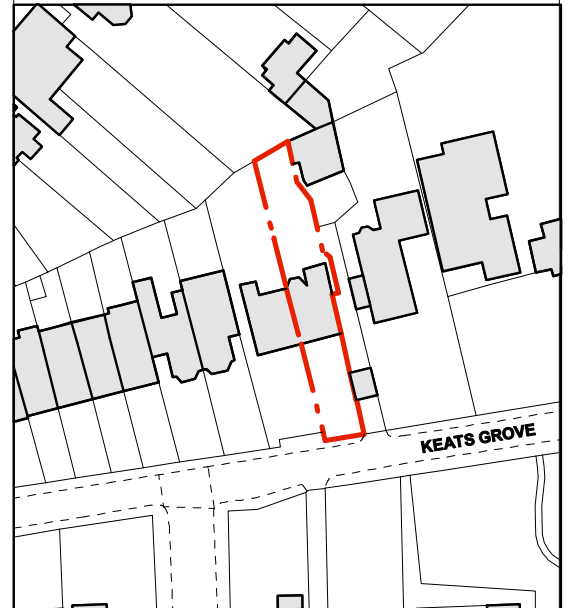
All dimensions to be verified on site
To be read in conjunction with all relevant documents
In the event of discrepancy notify the Architect immediately
This document is copyright of Hugh Cullum Architects Ltd

Issue Status

SK	Sketch	E	Existing Condition
D	Design	P	Permissions
T	Tender	C	Contract

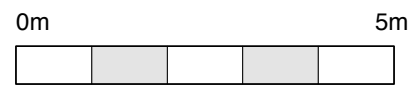
 Demolition

 Site Boundary line



(_): Issued for Planning Application (24.02.16/GW)

Revision: Information (date/drawn by/checked by)



AS EXISTING _ Front Elevation

HUGH CULLUM
ARCHITECTS LTD
Bloomsbury Design
61b Judd Street
London WC1H 9QT
t 020 7383 7647
f 020 7387 7645
mail@hughcullum.com



15 Keats Grove

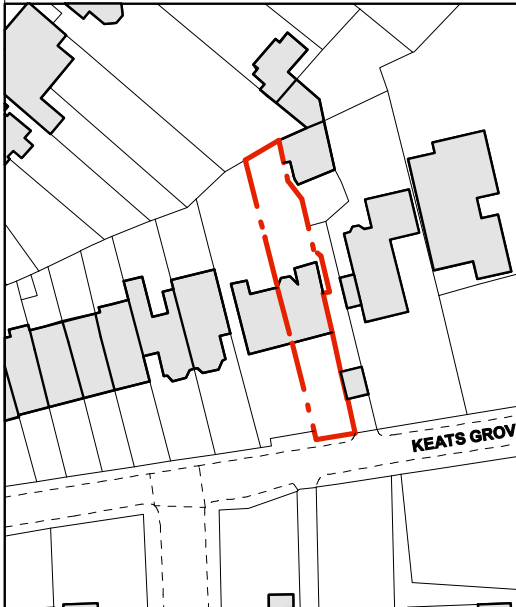
Existing
Front Elevation
1:100@A3 February 2016

KG015-E007(_)

General Notes
 All dimensions to be verified on site
 To be read in conjunction with all relevant documents
 In the event of discrepancy notify the Architect immediately
 This document is copyright of Hugh Cullum Architects Ltd

Issue Status
 SK Sketch E Existing Condition
 D Design P Permissions
 T Tender C Contract

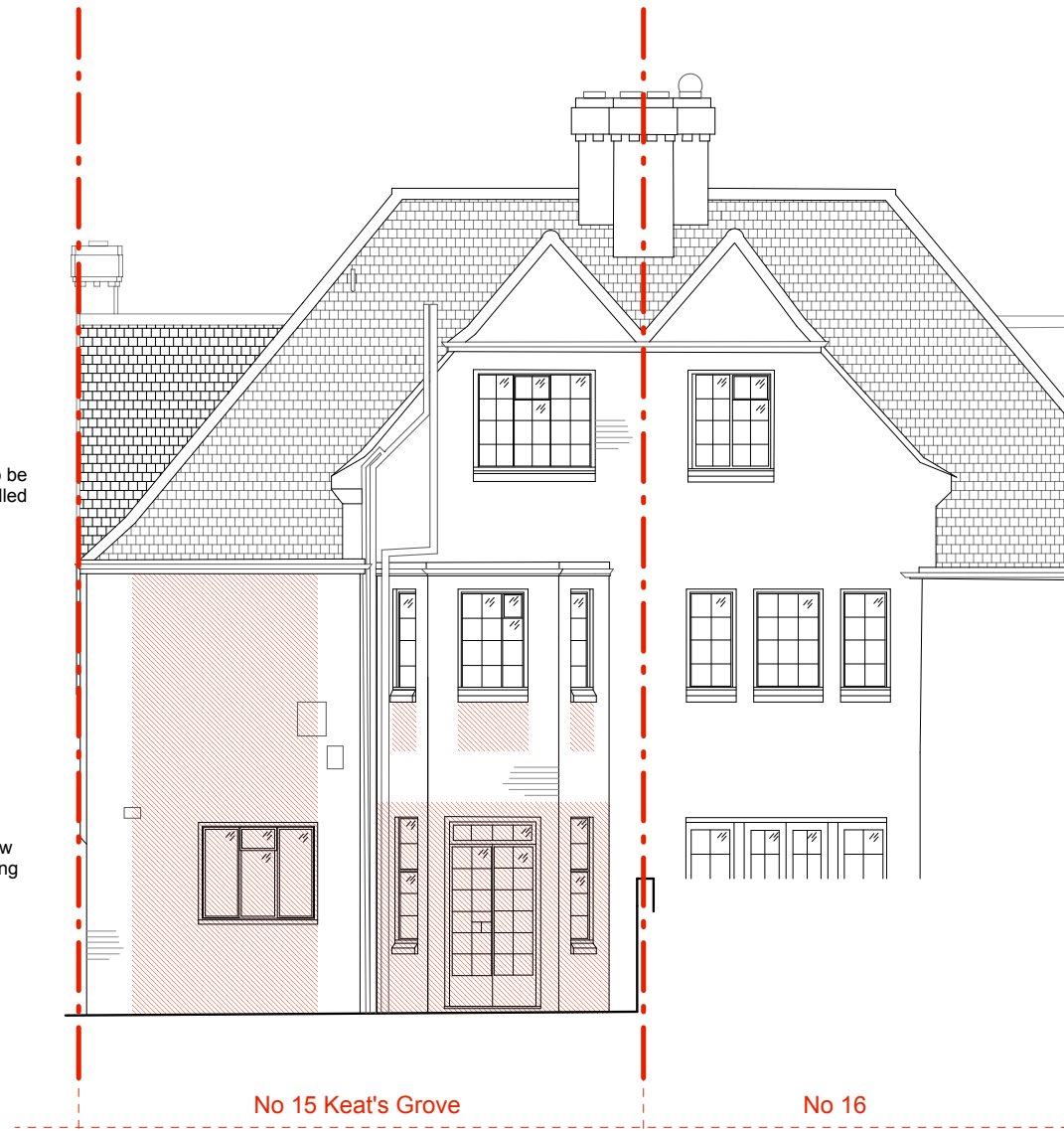
 Demolition
 Site Boundary line



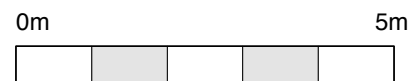
(_): Issued for Planning Application (24.02.16/GW)
 Revision: Information (date/drawn by/checked by)



Side Elevation



Rear Elevation



AS EXISTING _ Rear and Side Elevation



HUGH CULLUM ARCHITECTS LTD
 Bloomsbury Design
 61b Judd Street
 London WC1H 9QT
 t 020 7383 7647
 f 020 7387 7645
 mail@hughcullum.com

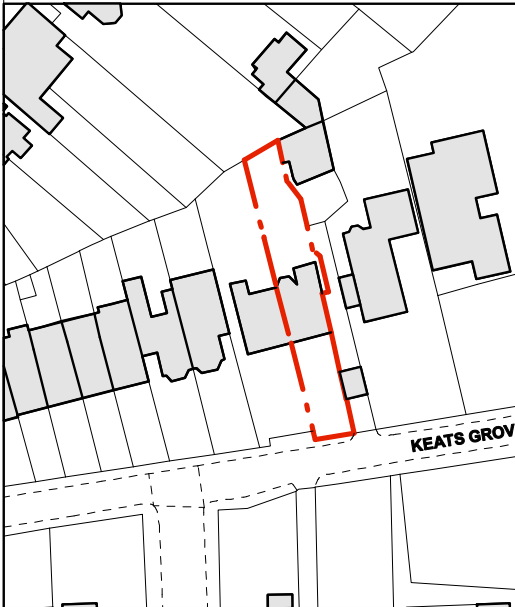
15 Keats Grove
 Existing
 Rear and Side Elevation
 1:100@A3 February 2016
 KG015-E008(_)

General Notes
 All dimensions to be verified on site
 To be read in conjunction with all relevant documents
 In the event of discrepancy notify the Architect immediately
 This document is copyright of Hugh Cullum Architects Ltd

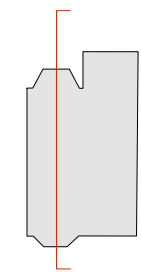
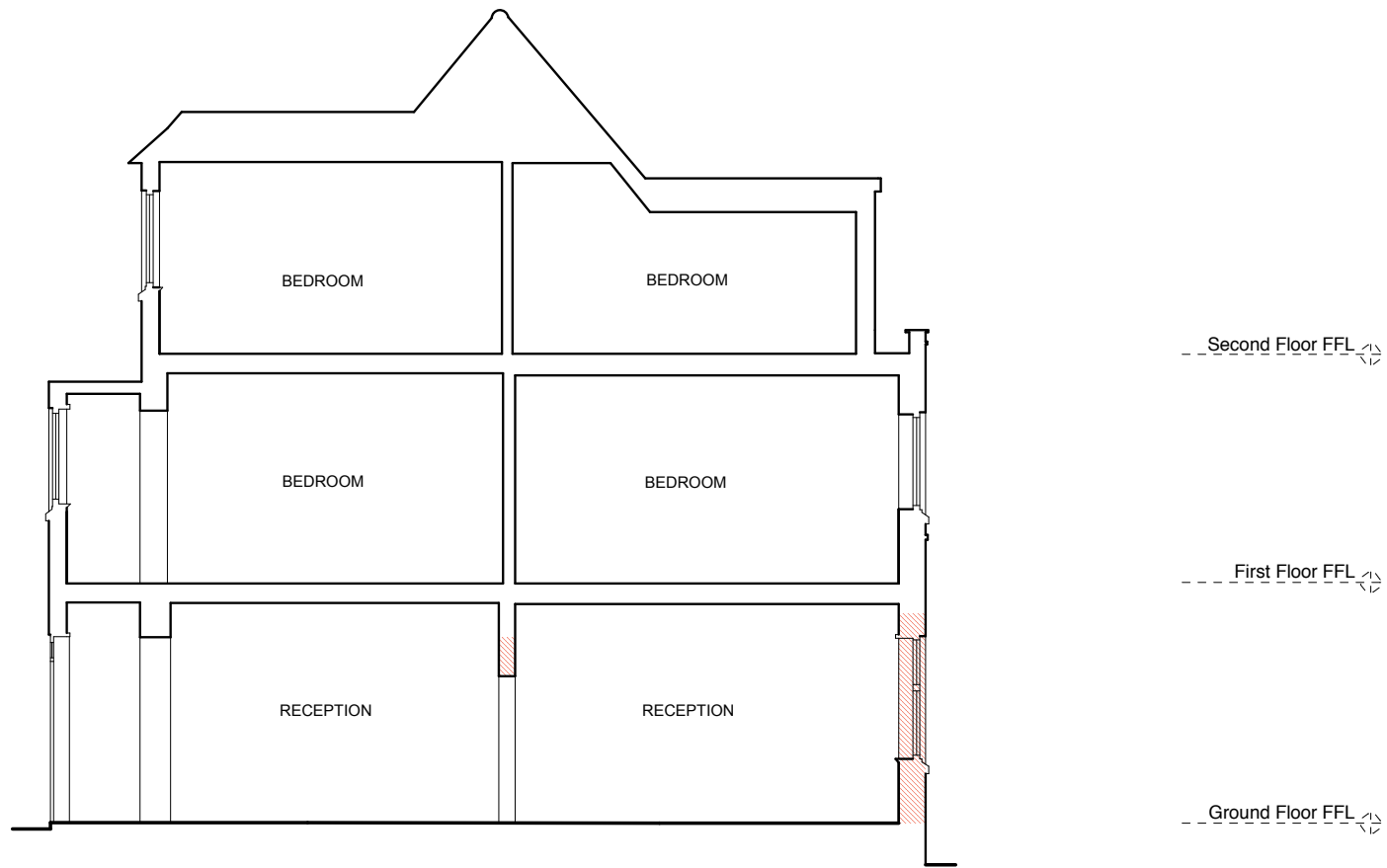
Issue Status
 SK Sketch
 D Design
 T Tender

E Existing Condition
 P Permissions
 C Contract

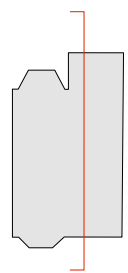
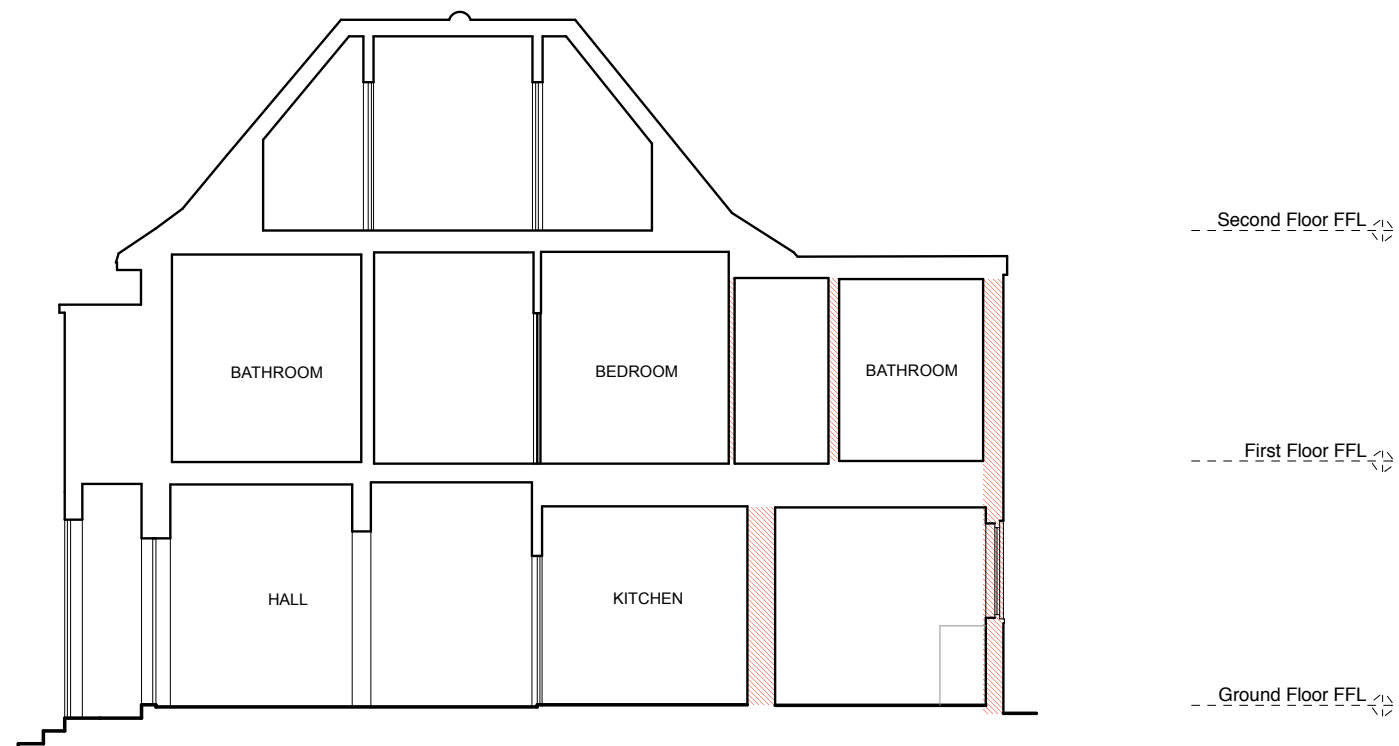
 Demolition
 Site Boundary line



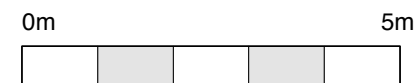
(_): Issued for Planning Application (24.02.16/GW)
 Revision: Information (date/drawn by/checked by)



Section AA



Section BB



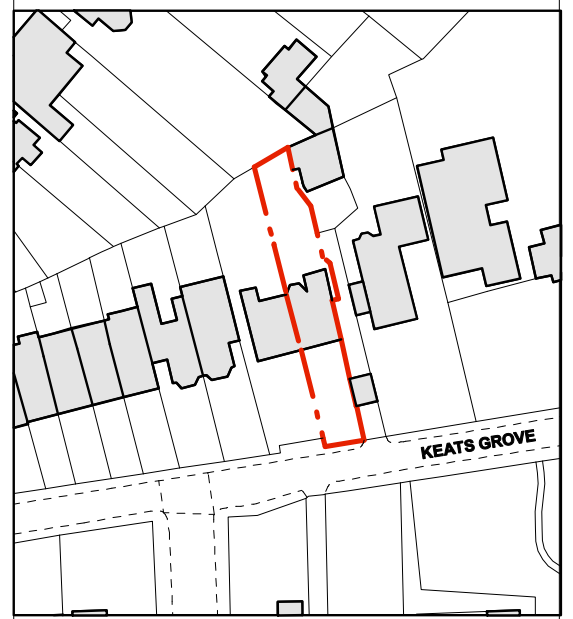
AS EXISTING _ Section AA & BB

General Notes
 All dimensions to be verified on site
 To be read in conjunction with all relevant documents
 In the event of discrepancy notify the Architect immediately
 This document is copyright of Hugh Cullum Architects Ltd

Issue Status

SK	Sketch	E	Existing Condition
D	Design	P	Permissions
T	Tender	C	Contract

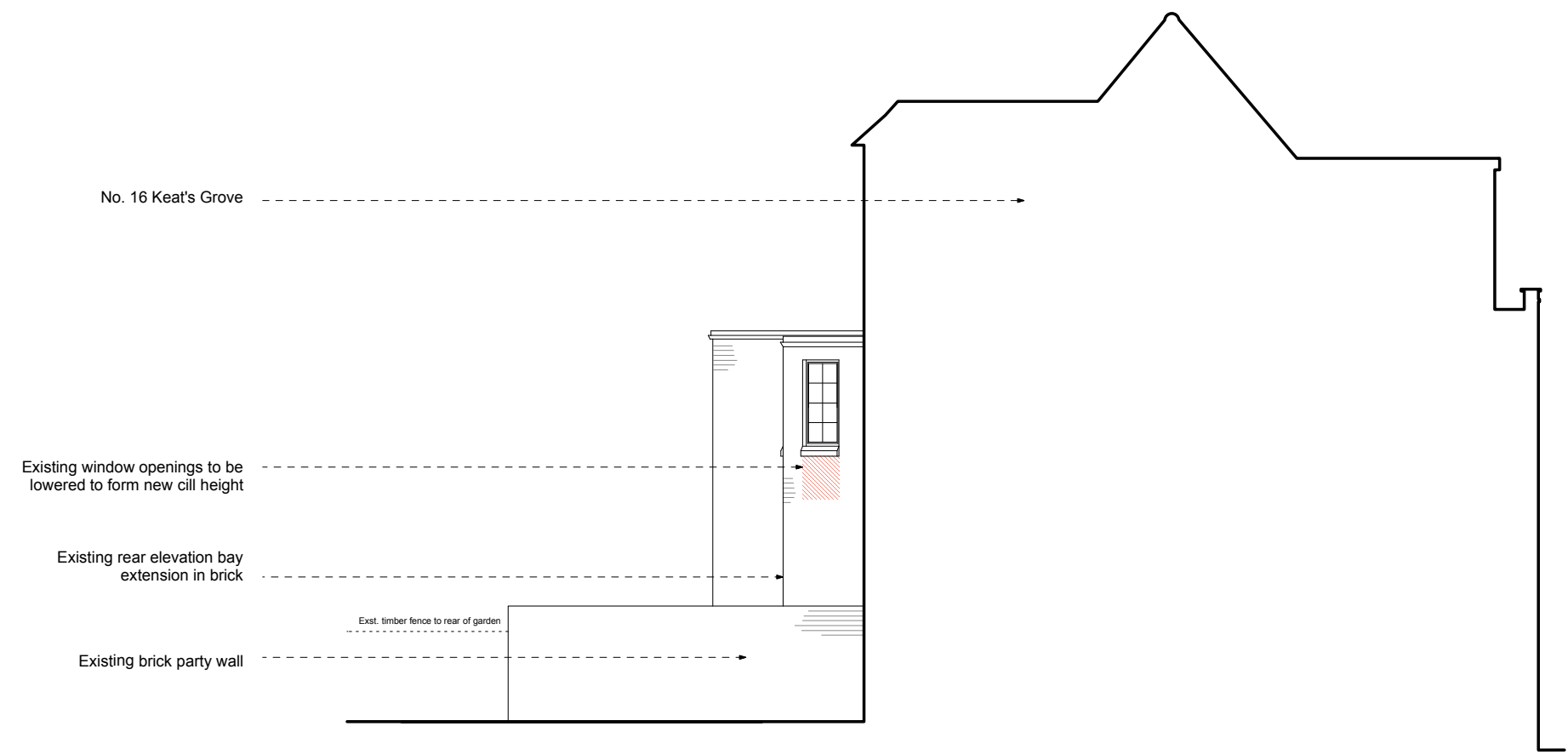
- Demolition
- Site Boundary line



(_): Issued for Planning Application (24.02.16/GW)
 Revision: Information (date/drawn by/checked by)

HUGH CULLUM ARCHITECTS LTD
 Bloomsbury Design
 61b Judd Street
 London WC1H 9QT
 t 020 7383 7647
 f 020 7387 7645
 mail@hughcullum.com

15 Keats Grove
 Existing
 Side Elevation from No.16
 1:100@A3 February 2016
KG015-E010(_)



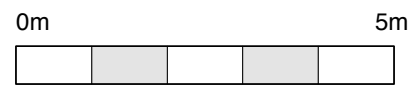
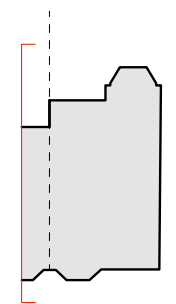
No. 16 Keat's Grove

Existing window openings to be lowered to form new cill height

Existing rear elevation bay extension in brick

Exst. timber fence to rear of garden

Existing brick party wall



AS EXISTING _ Side Elevation From No. 16 Keat's Grove