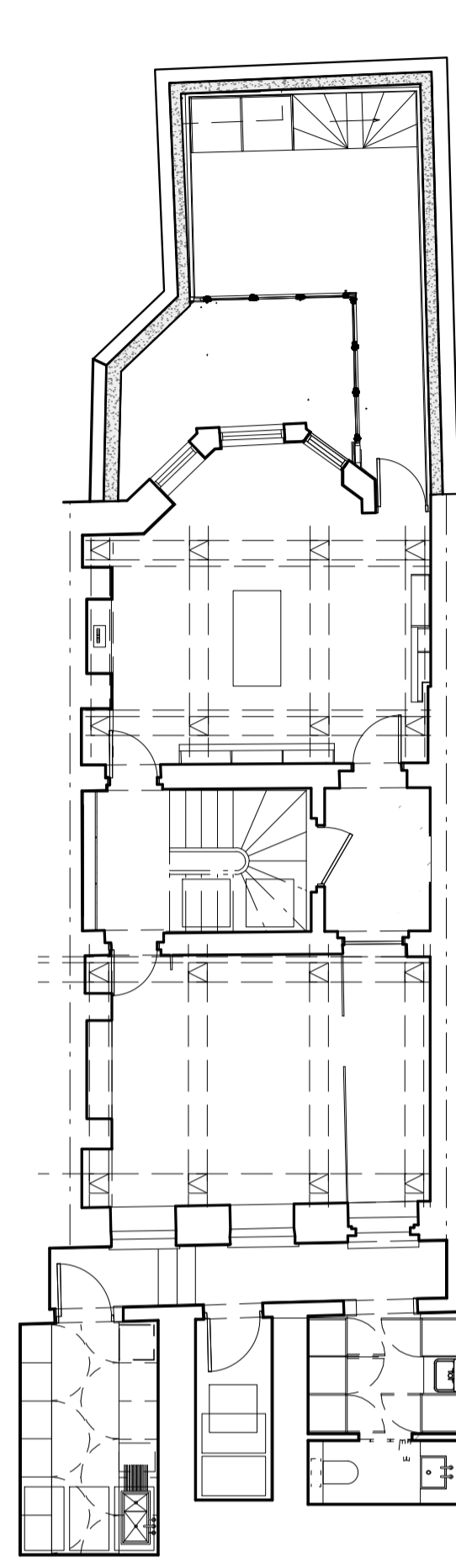
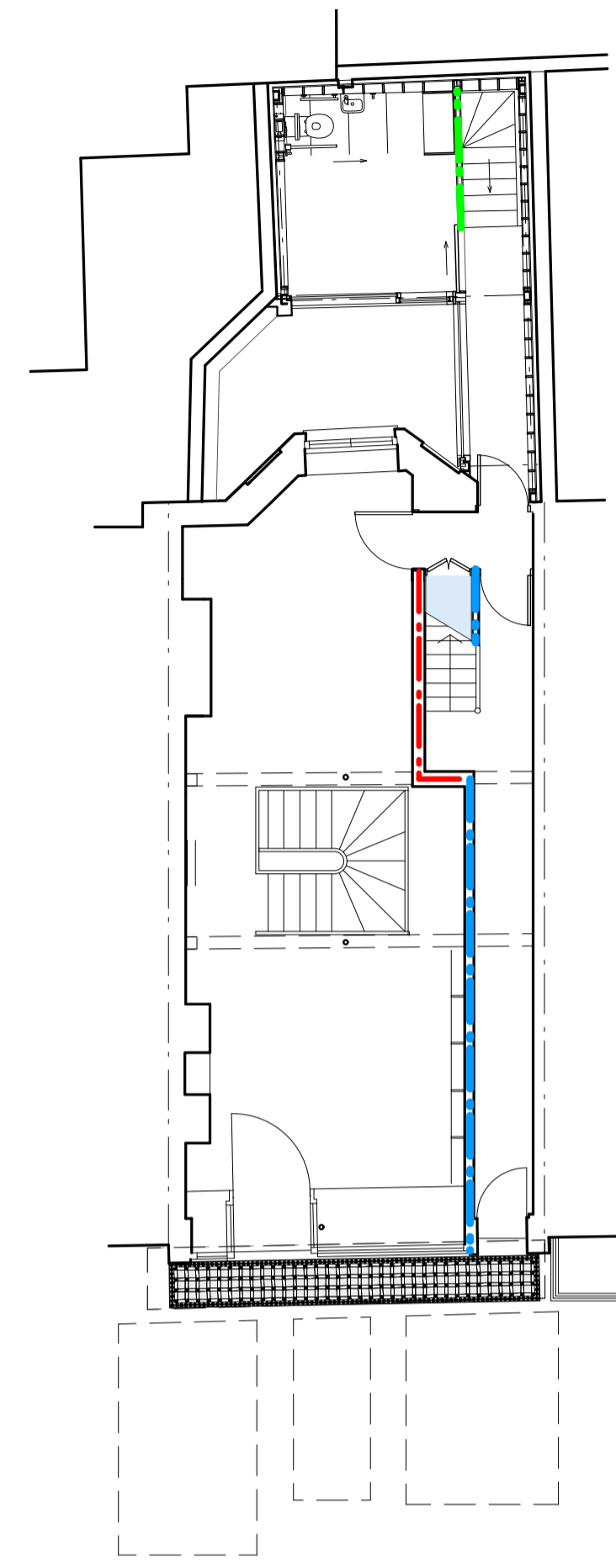


NOTES:
 1. DO NOT SCALE FROM THIS DRAWING. USE FIGURED DIMENSIONS ONLY. CONTRACTOR TO CHECK DIMENSIONS ON SITE PRIOR TO CONSTRUCTIONS AND NOTIFY ARCHITECT OF ANY DISCREPANCY.
 2. THIS DRAWING TO BE READ IN CONJUNCTION WITH ALL OTHER RELEVANT CONTRACT DRAWINGS, SPECIFICATIONS, AND SCHEDULES.

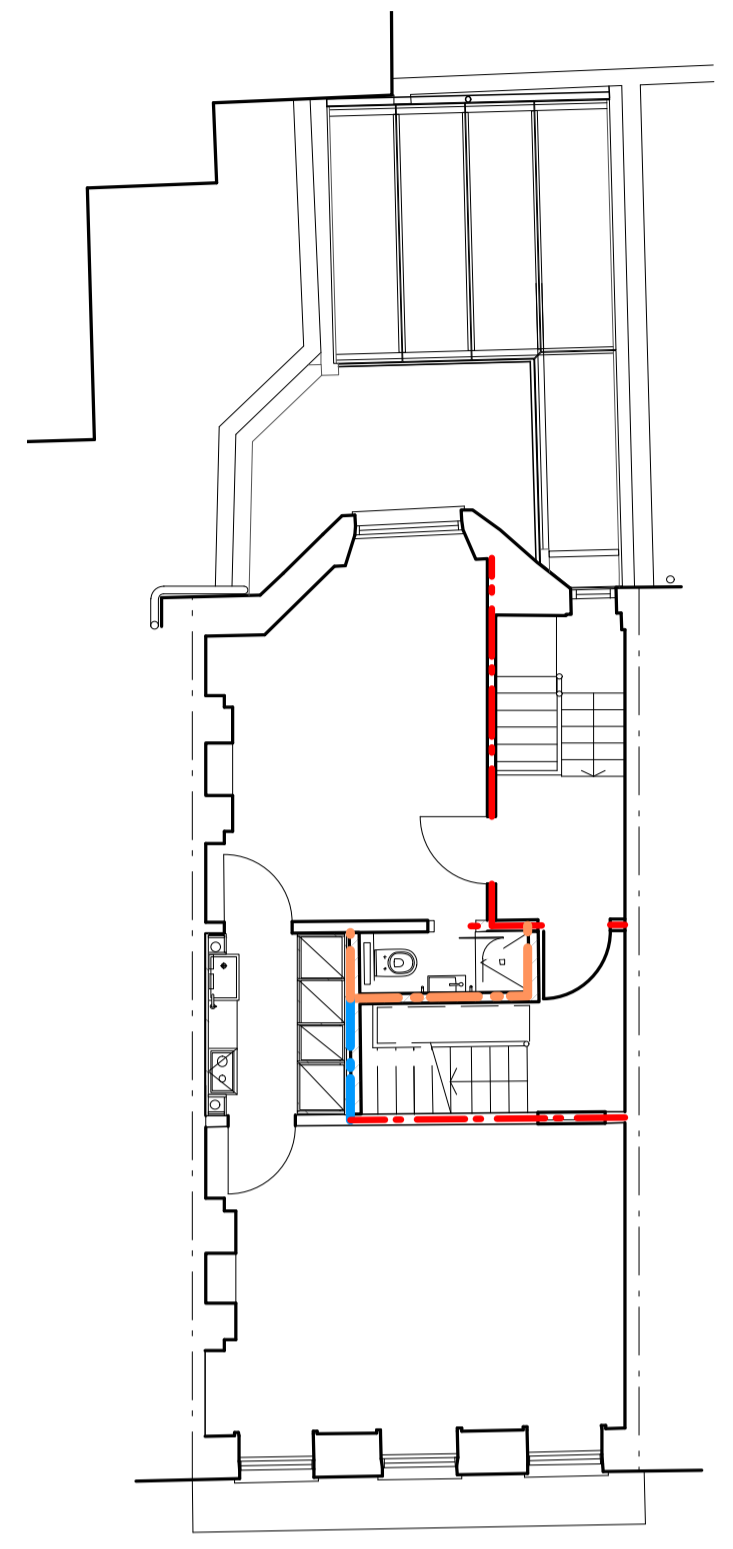
No.	ISSUE/REVISIONS	DATE
-	DRAFT	20/01/15
T1	TENDER	20/02/15
C0	FOR CONSTRUCTION	08/06/15
C1	General Updates	29/02/16



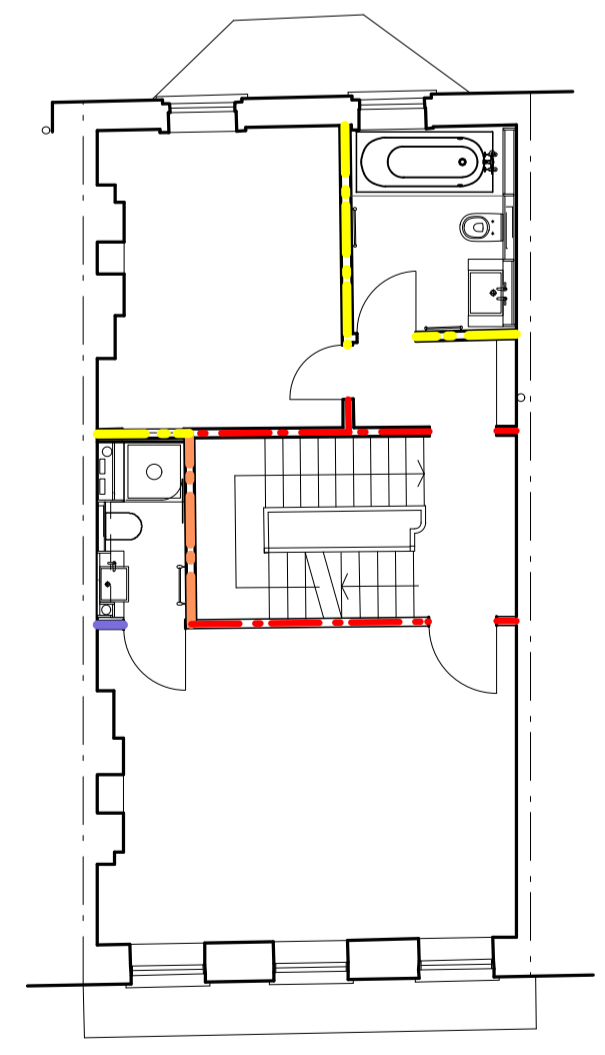
Basement



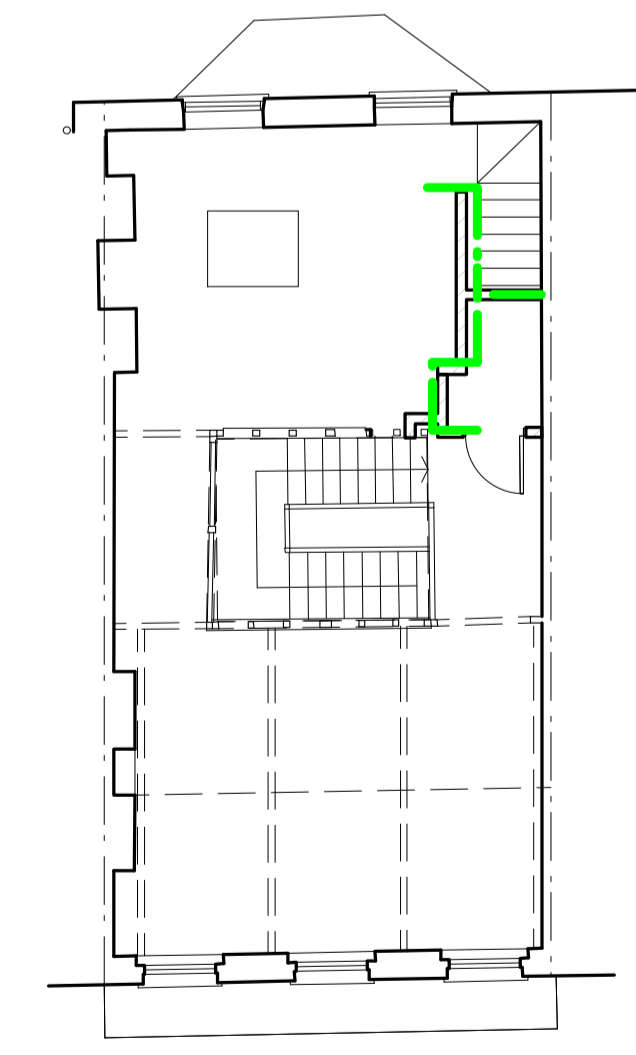
GF



1F



2F



3F

General Notes
 1. Unmarked walls build up to be retained as existing condition and redecorated - refer to finish schedule
 2. Refer to 321.60.200 series for the typical details

- **Internal wall type A**
 Fire resistance = 60 minutes
 Airborne sound = 43dB
- **Internal wall type B**
 Fire resistance = 60 minutes
 Airborne sound = 40dB
- **Internal wall type C**
 Fire resistance = 60 minutes
 Airborne sound = 43dB
- **Internal wall type D**
 Fire resistance = 60 minutes
 Airborne sound = 43dB
- **Internal wall type E**
 Airborne sound = 40dB

DRAWING: Internal Wall Key Plan

CLIENT: Connock & Lockie Ltd + Masanori Nagashima

PROJECT: 33/33a Lambs Conduit Street

STATUS: CONSTRUCTION

SCALE AT A1: 1:100 DRAWN: TM

SCALE AT A3: 1:200 CHECKED: TO

DRAWING NO: **321.60.000** REVISION: **C1**