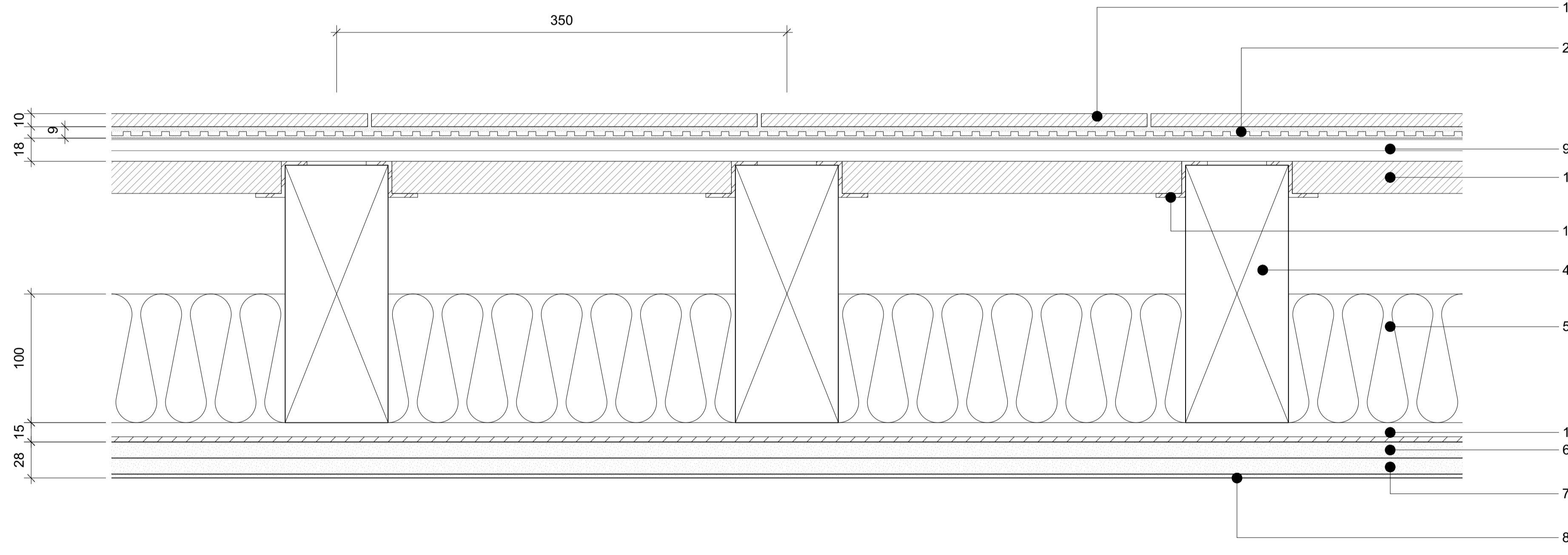


Type C1 floor build up: on 2F between Flat 2 Bathroom / Flat 1

Airborne sound insulation $R_w (R_w+C_{tr}) = 46dB$
 Impact sound insulation $L_{nw} = 56dB$

60 minutes fire resistance to BS

as per TRIM acoustics product literature



Type C2 floor build up: on 1F between Flat 1 Bathroom / Shop

Airborne sound insulation $R_w (R_w+C_{tr}) = 46dB$
 Impact sound insulation $L_{nw} = 56dB$

60 minutes fire resistance to BS

as per TRIM acoustics product literature

FLAT 1

SHOP

- Notes
1. 10mm Marble tiles - M40 clause TBC
 2. 9mm cement based adhesive with 3mm uncoupling membrane -M40.470 & 710
 3. 35mm flooring resilient layer - K20.150A
 4. Existing timber joist 200mm high and width varying between 60-100mm
 5. 100mm Mineral wool insulation - P10.240
 6. 12.5mm Gypsum board (improved sound insulation) - K10.409
 7. 12.5mm Gypsum board (improved fire protection) - K10.404
 8. 3mm Gypsum plaster skim coat - M20.280
 9. 18 mm Marine plywood - K11.816
 10. Concealed acoustic board in between joists - K20.150B
 11. Metal rails fixed on joist - K20.150B
 12. 15mm resilient bars - K10.245

NOTES:

1. DO NOT SCALE FROM THIS DRAWING. USE FIGURED DIMENSIONS ONLY. CONTRACTOR TO CHECK DIMENSIONS ON SITE PRIOR TO CONSTRUCTIONS AND NOTIFY ARCHITECT OF ANY DISCREPANCY.
2. THIS DRAWING TO BE READ IN CONJUNCTION WITH ALL OTHER RELEVANT CONTRACT DRAWINGS, SPECIFICATIONS, AND SCHEDULES.

No.	ISSUE/REVISIONS	DATE
C0	FOR CONSTRUCTION	11/12/15
C1	General Updates	21/01/16
C2	General Updates	29/02/16

DRAWING: **Type C bathroom floor upgrade**

CLIENT: Connock & Lockie Ltd + Masanori Nagashima

PROJECT: 33/33a Lambs Conduit Street

STATUS: CONSTRUCTION

SCALE AT A1: - DRAWN: TO

SCALE AT A3: 1:5 CHECKED: TO

DRAWING NO: **321.60.103** REVISION: **C2**