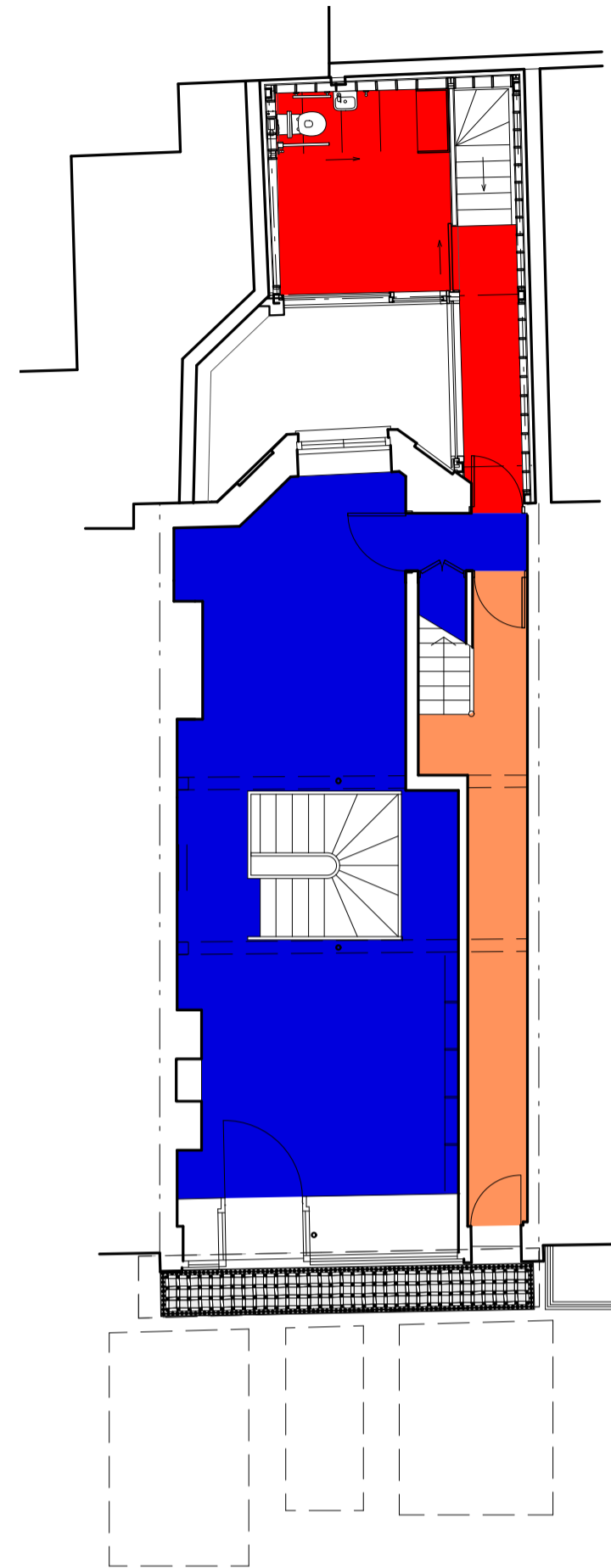
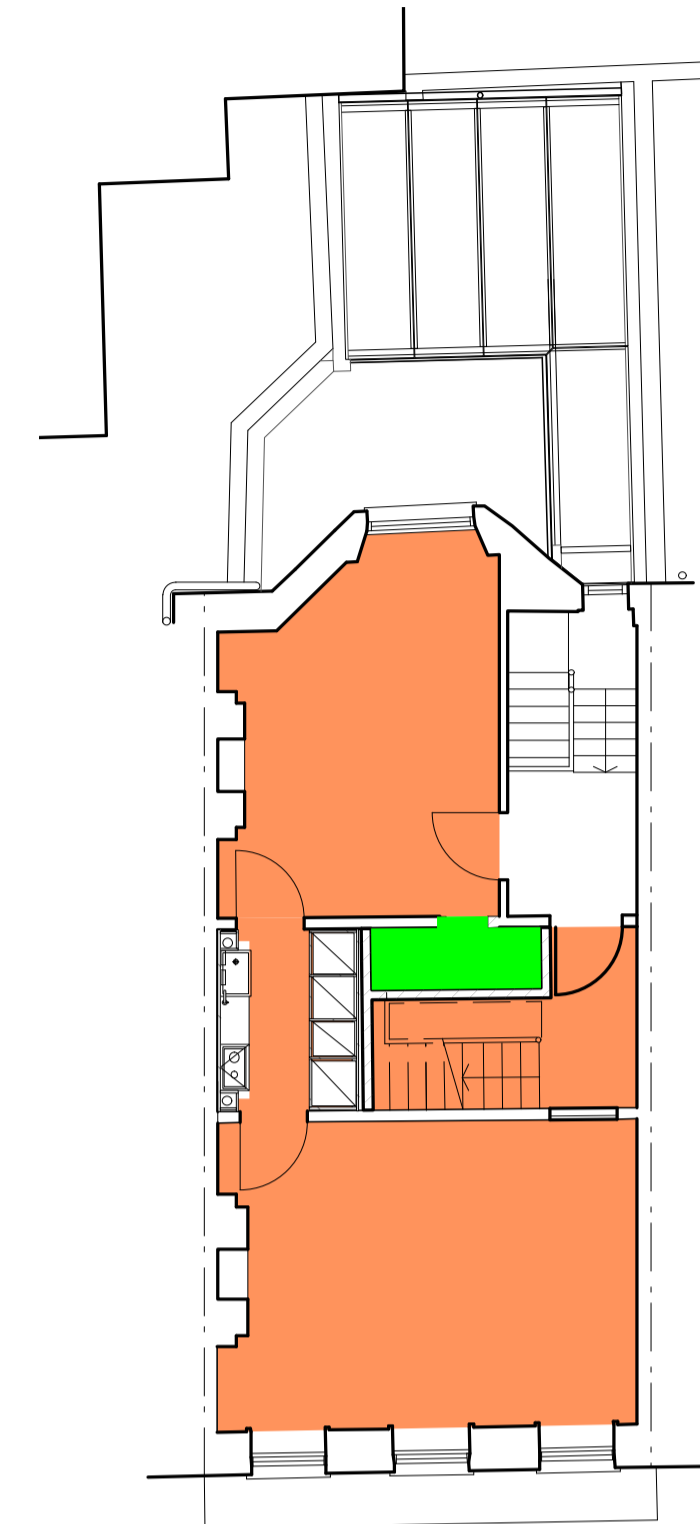


Basement



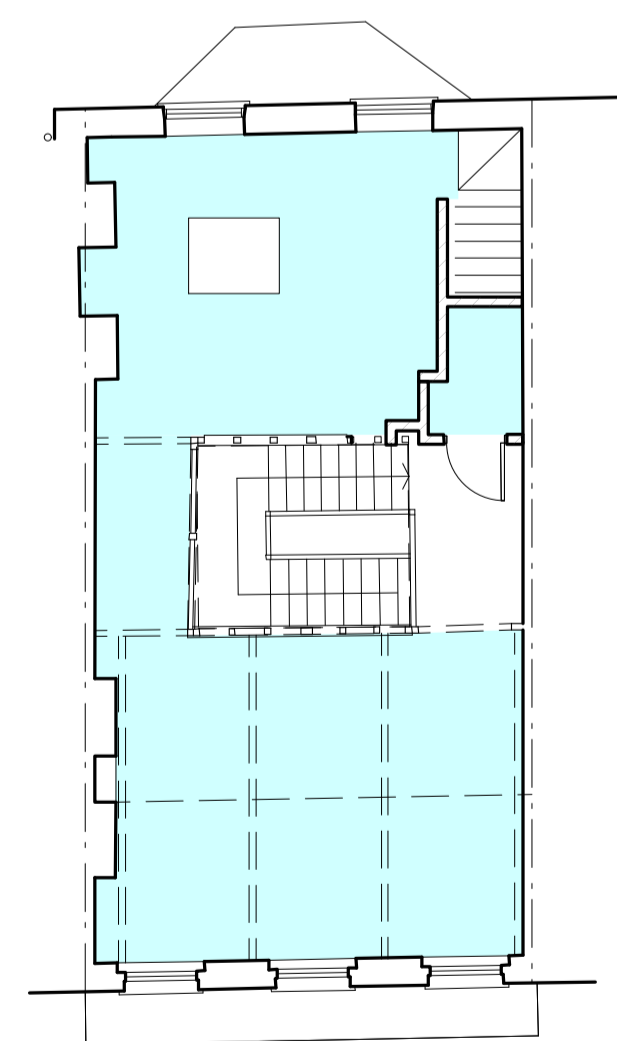
GF



1F



2F



3F

General Notes

1. Refer to 321.60.100 series for the typical details

NOTES:

1. DO NOT SCALE FROM THIS DRAWING. USE FIGURED DIMENSIONS ONLY. CONTRACTOR TO CHECK DIMENSIONS ON SITE PRIOR TO CONSTRUCTIONS AND NOTIFY ARCHITECT OF ANY DISCREPANCY.
2. THIS DRAWING TO BE READ IN CONJUNCTION WITH ALL OTHER RELEVANT CONTRACT DRAWINGS, SPECIFICATIONS, AND SCHEDULES.

No.	ISSUE/REVISIONS	DATE
C0	FOR CONSTRUCTION	29/02/16

- Floor type A1**
Fire resistance = 60 minutes
Airborne sound = 46 dB
Impact sound = 56 dB
- Floor type A2**
Fire resistance = 60 minutes
Airborne sound = 46 dB
- Floor type B1**
Fire resistance = 60 minutes
- Floor type B2**
Fire resistance = 30 minutes
- Floor type C1**
Fire resistance = 60 minutes
Airborne sound = 46 dB
Impact sound = 56 dB
- Floor type C2**
Fire resistance = 60 minutes
Airborne sound = 46 dB
- Floor type D**
- Floor type E**
Fire resistance = 30 minutes

DRAWING: **Internal Floor Key Plan**

CLIENT: **Connock & Lockie Ltd + Masanori Nagashima**

PROJECT: **33/33a Lambs Conduit Street**

STATUS: **CONSTRUCTION**

SCALE AT A1: 1:100 DRAWN: TO

SCALE AT A3: 1:200 CHECKED: TO

DRAWING NO: **321.60.001** REVISION: **C0**

McDowell+Benedetti

34-35 Hutton Garden, London EC1N 8DX
email@McDowellBenedetti.com

t. 020 3475 7500
f. 020 3475 7501