

1219 (SK) 0113 - REVA
BENNETTS ASSOCIATES
 EXTERNAL L.E.D. LIGHTING
 CONDITION NO 5.
 24th FEBRUARY 2016 PB SCALE 1:100

* 4 NO. LUMENFAÇADE BY
 LUMENFUSE
 949 X 59 X 89 (d)
 ASYMMETRIC WALL WASH
 10° X 60° WASH
 → 2 NO. WAM6 (158MM)
 BRACKETS PER
 FITTING FIXED TO
 BRICKWORK

APPROX.
 AREA OF
 FLOOD FOR
 FITTING

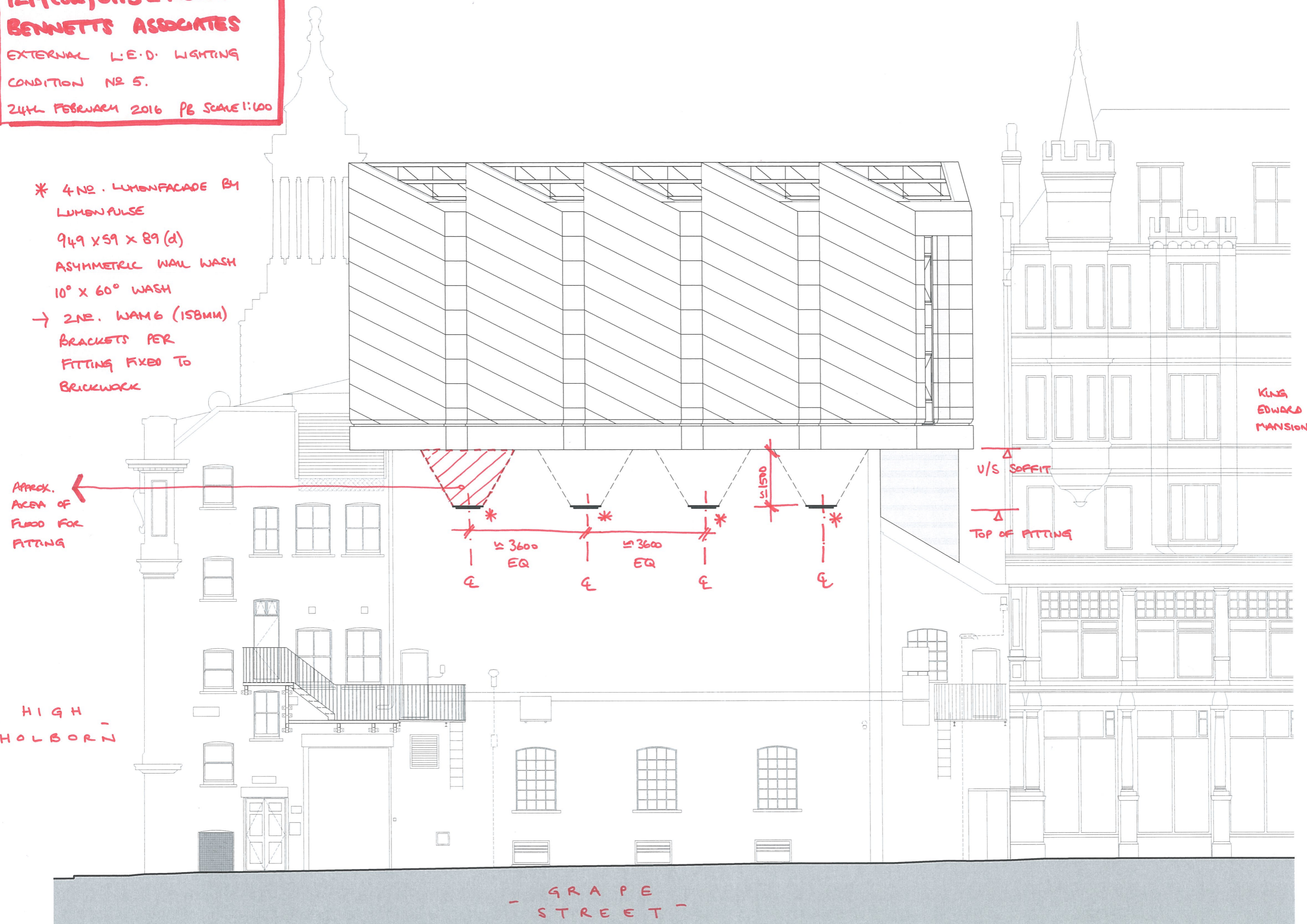
HIGH
 HOLBORN

KING
 EDWARD
 MANSION

U/S SOFFIT

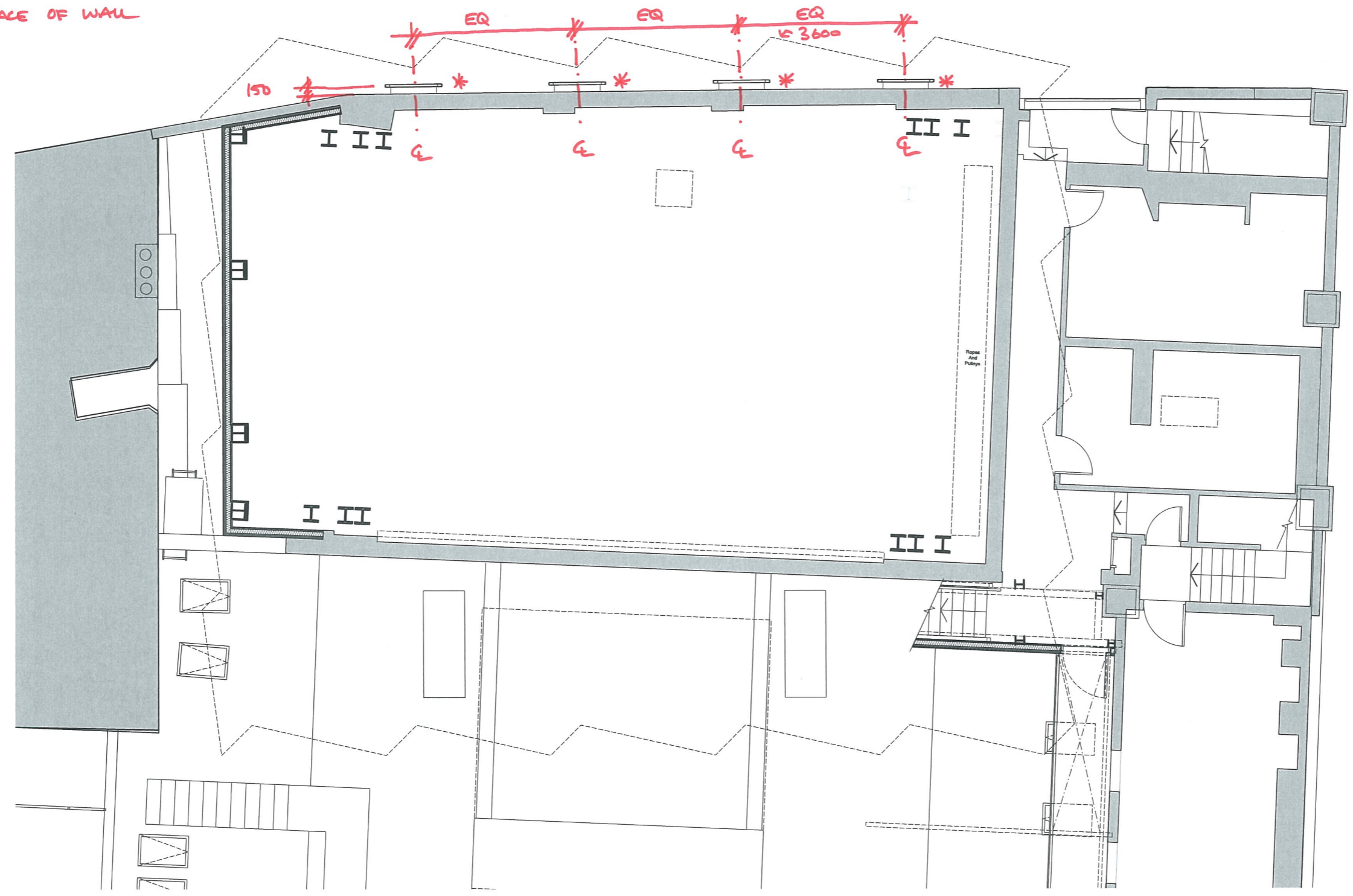
TOP OF FITTING

GRAPE
 STREET



- GRAPE STREET -

* 4 NO. FITTING FIXED TO BRICKWORK WALL WITH 2 NO BRACKETS \approx 150MM FROM FACE OF WALL



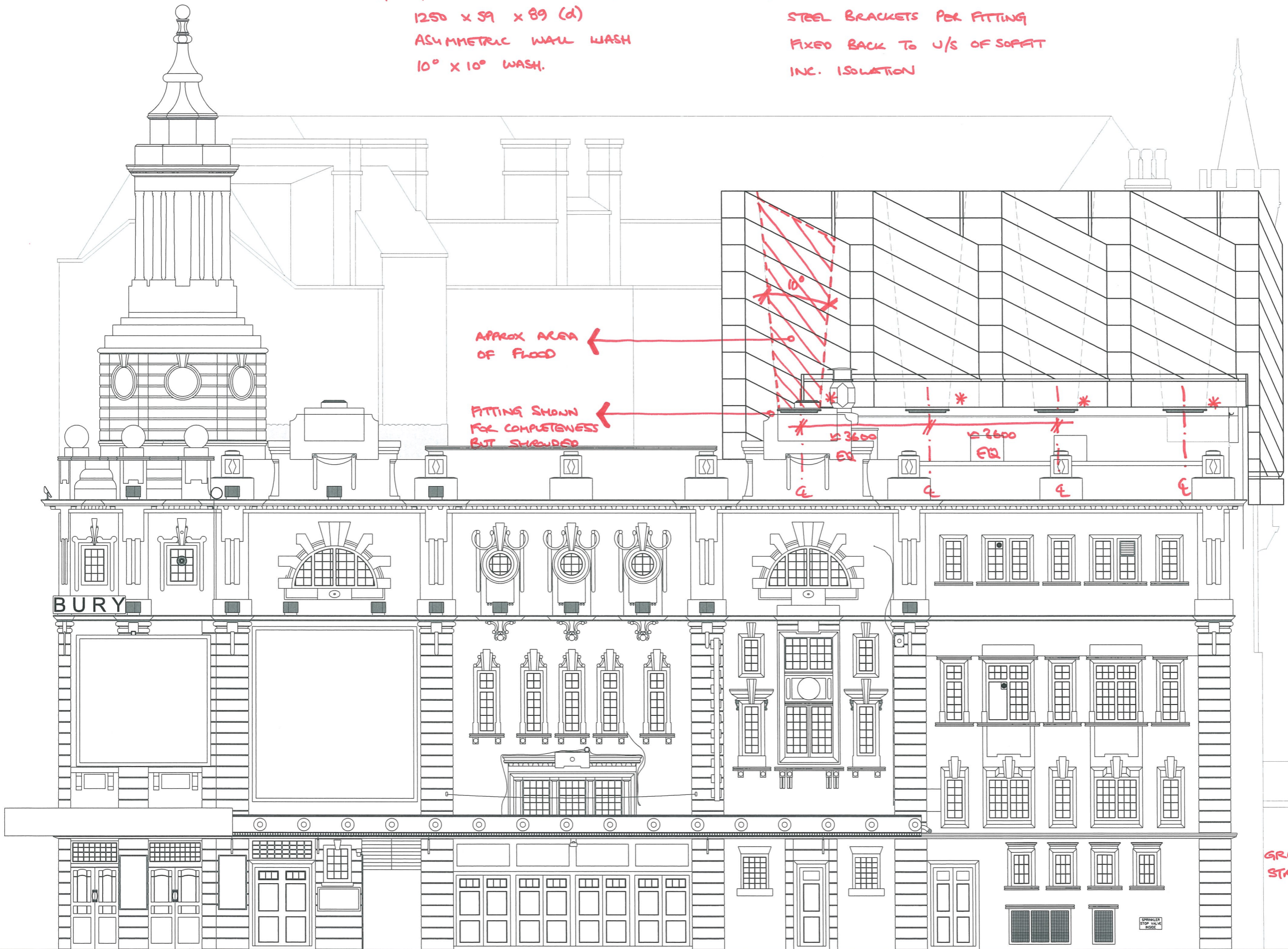
- HIGH HUBS -



LEVEL 04

* 4 NO. LUMENFACADE BY LUMENPULSE
1250 x 59 x 89 (d)
ASYMMETRIC WALL WASH
10° x 10° WASH.

→ 2 NO. BESPOKE WEATHERING
STEEL BRACKETS PER FITTING
FIXED BACK TO U/S OF SOFFIT
INC. ISOLATION



APPROX AREA OF FLOOD

FITTINGS SHOWN FOR COMPLETENESS BUT SHROUDED

3600

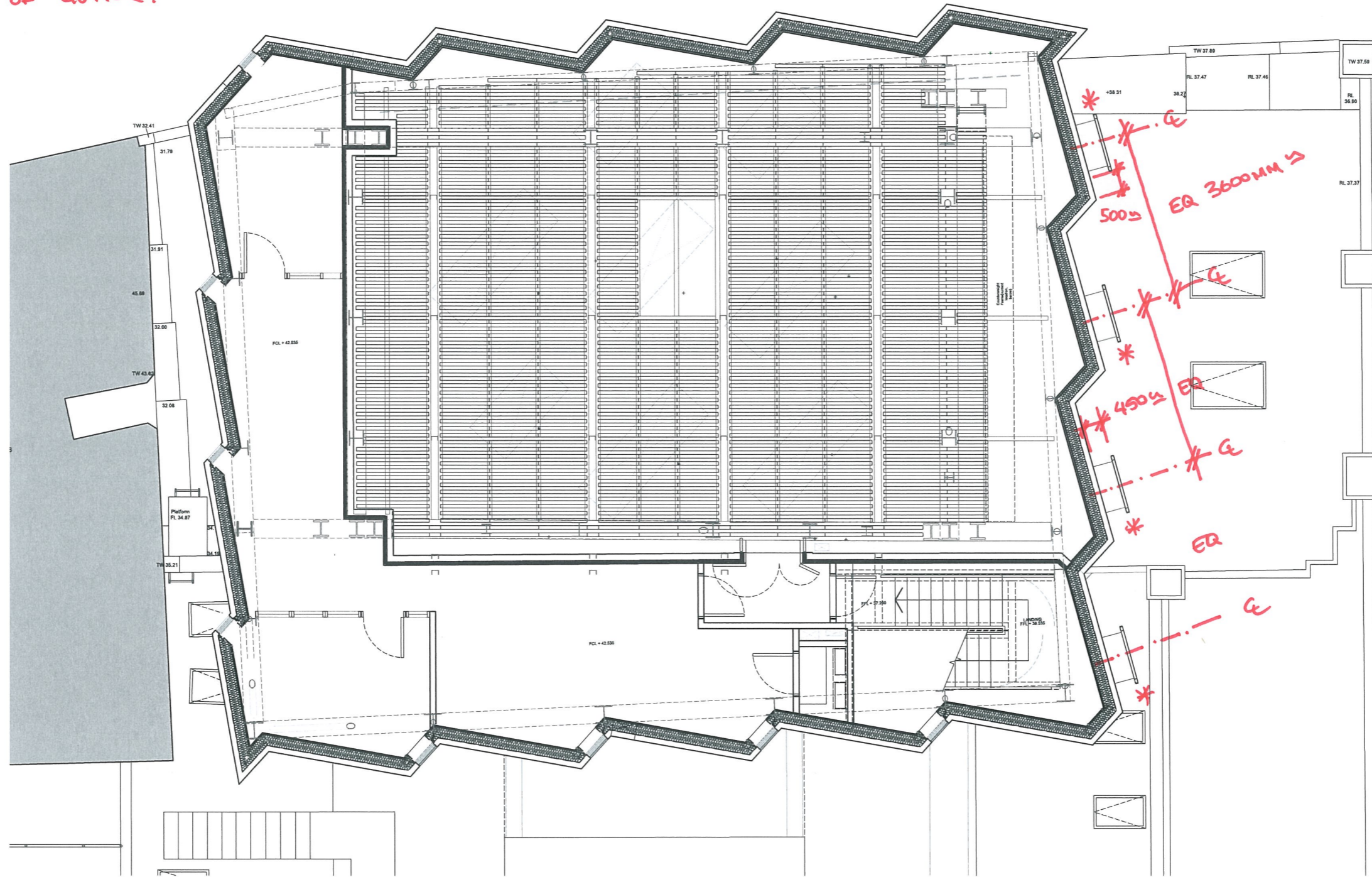
2600

BURY

GRAPE STREET

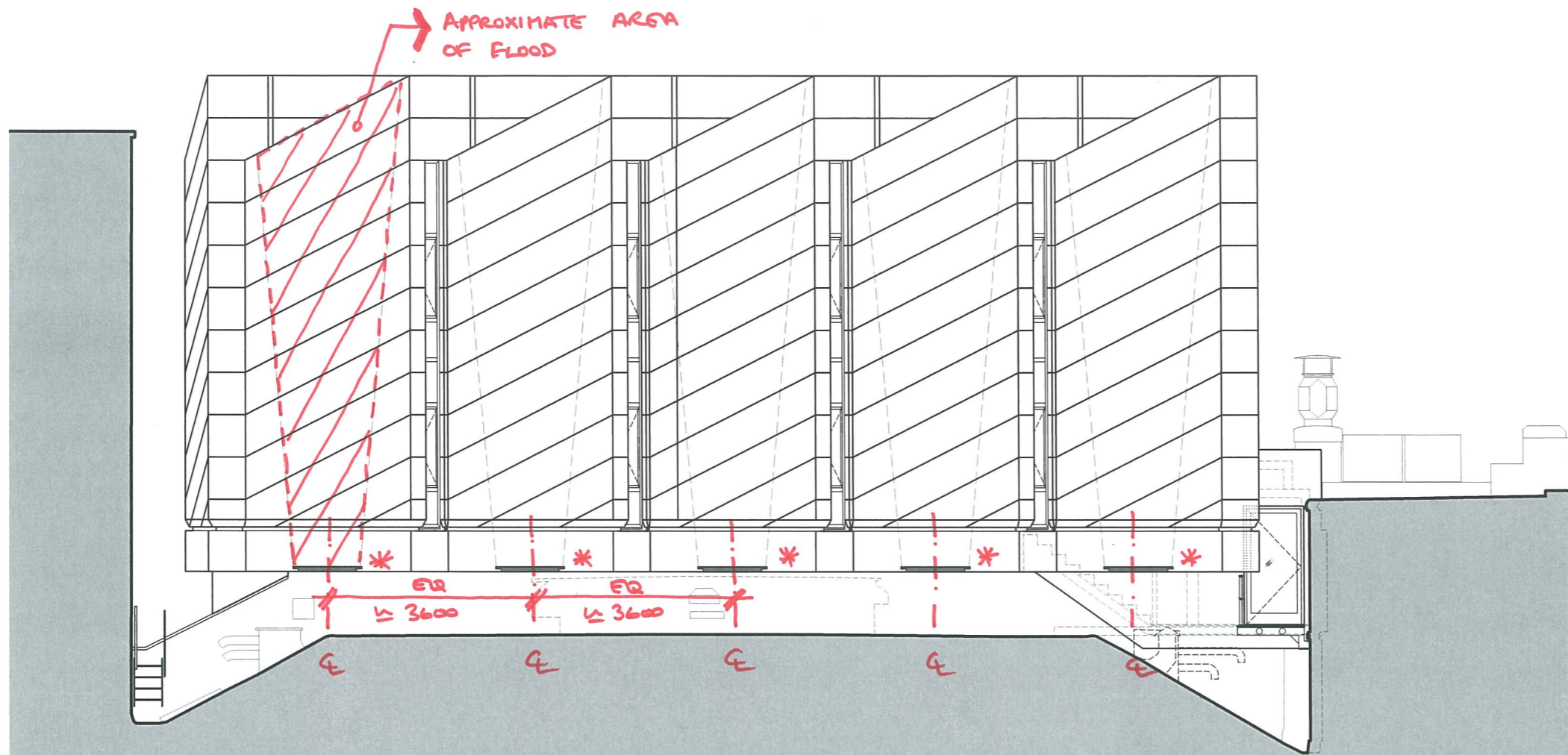
- GRAPE STREET -

* 4 NO FITTINGS FIXED
TO SOFFIT OF EXTENSION
WITH 2NO WEATHERING
STEEL BRACKETS < 450MM
FROM FACE OF GUTTER.



- HIGH HOLBORN -

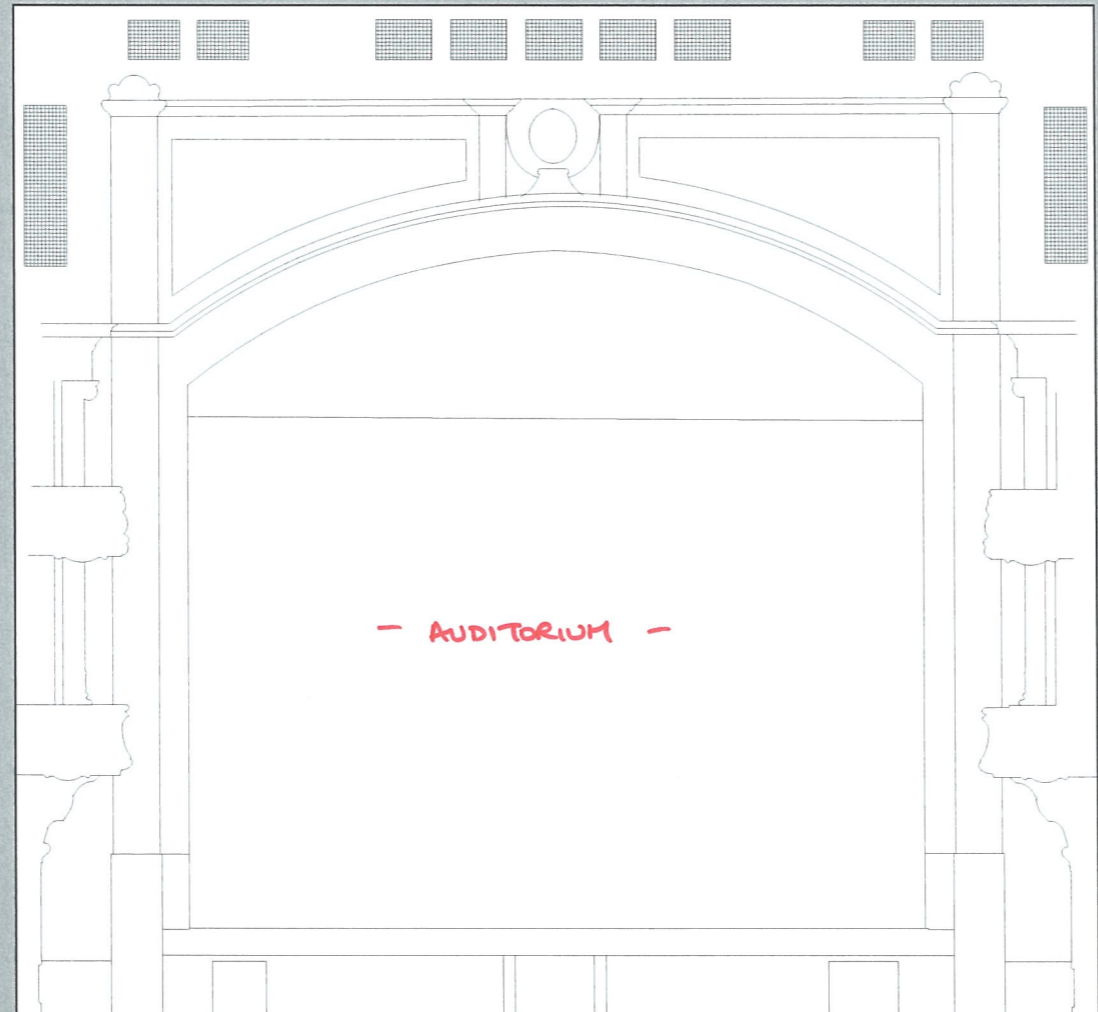
LEVEL 06



* 5 NO. WINDOW FACADE
BY WINDOWPULSE
1250 X 59 X 89 (d)
ASYMMETRIC WALL WASH
10° X 10° WASH

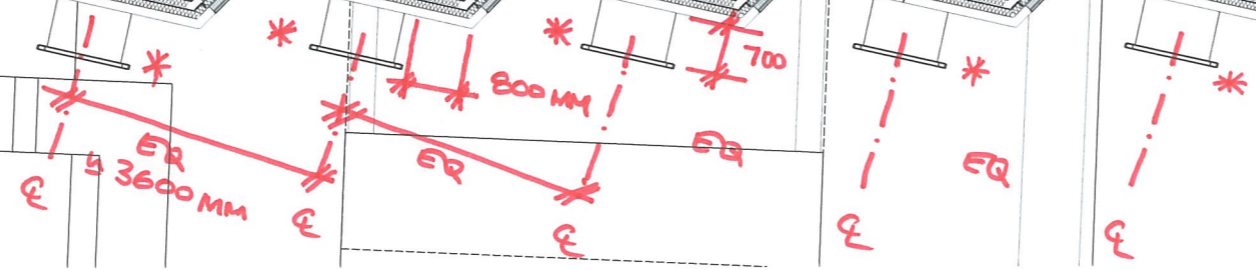
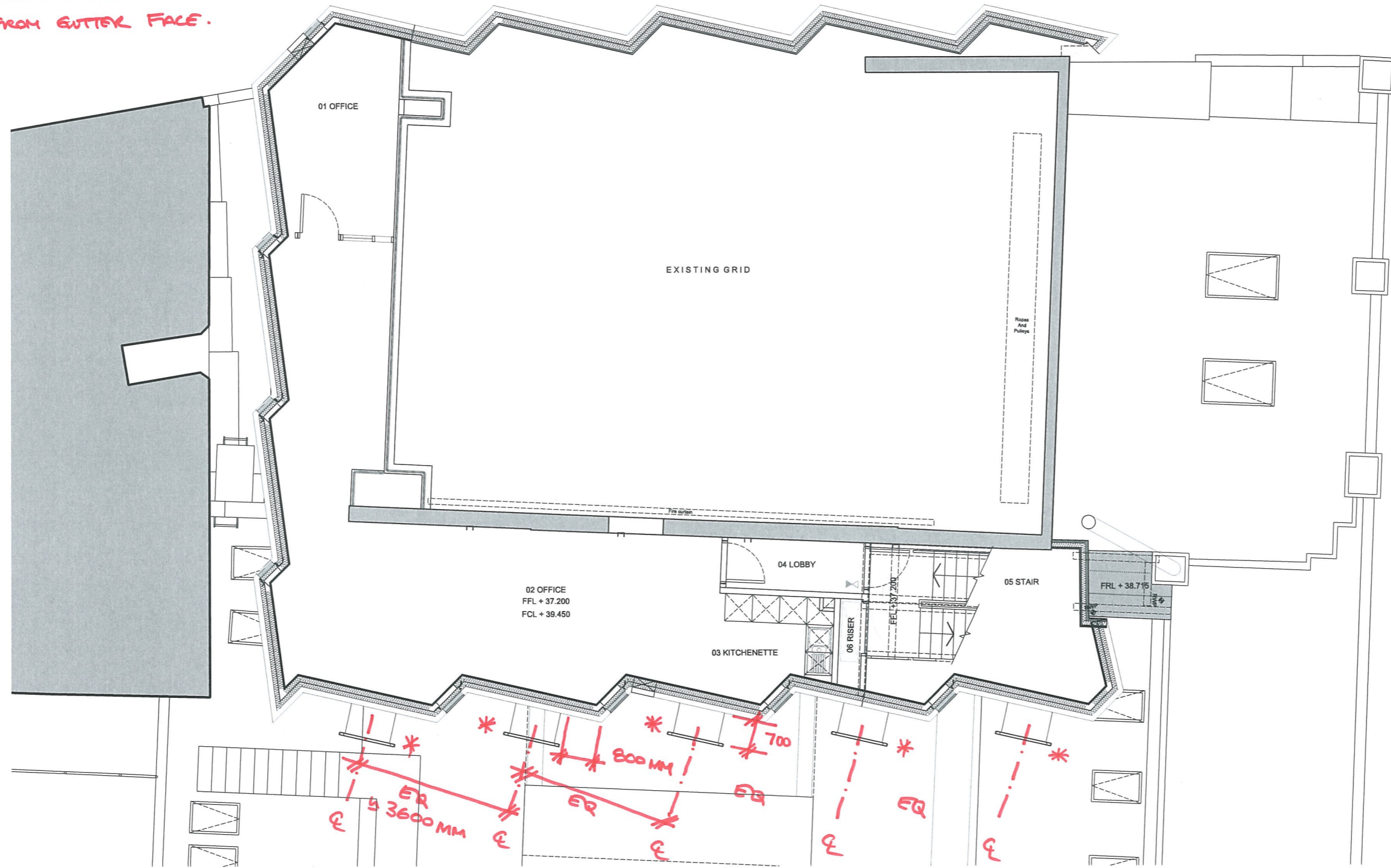
→ 2 NO. BESPOKE WEATHERING
STEEL BRACKETS PER
FITTING, FIXED BACK
TO FRONT FACE OF
GUTTER INC. ISOLATION

H I G H
H O L B O R N



- GRAPE STREET -

* 4 NO. FITTING FIXED TO GUTTER OF EXTENSION WITH 2 NO. WEATHERING STEEL BRACKETS \pm 700 MM FROM GUTTER FACE.



- HIGH HOLBORN -



LEVEL 05