

# DRYVIT ACR™ AND CEMENT BOARD MD FINISH SYSTEM™

## ANTI-CRACK RENDER SYSTEMS

Dryvit ACR systems and the Cement Board MD Finish System are a range of 100% acrylic polymer based anti-crack renders designed to out perform the shrinkage and cracking characteristics of traditional renders. The range offers a variety of coloured and textured coating options providing various levels of protection when used in the different component combinations.

Dryvit ACR systems are generally installed over a Dryvit polymer modified re-profiling mortar where levelling is required, on to exterior concrete, brickwork, blockwork, plastered or painted surfaces in new build or refurbishment projects.

The Cement Board MD Finish System incorporates an exterior grade cement board fixed to vertical batons and is ideal where a cavity system is called for without the need for exterior insulation. Commonly applied over timber or steel framed substrates incorporating an approved sheathing and breather membrane in new build residential and low-rise commercial projects.



Wellend Villas

Whitefriars

An Sean Mhuilleán

An Sean Mhuilleán

## BENEFITS

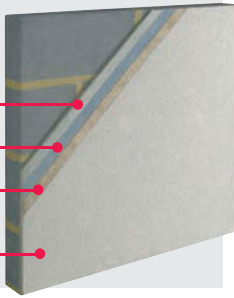
- **Crack resistance.** Location and frequency of movement joints is greatly reduced or even eliminated compared with that of traditional renders due to the high performance crack resistance of our systems.
- **Weatherability.** Dryvit systems are formulated to provide the utmost in weather protection providing a resilient barrier against wind and water.
- **Durability.** The combination of system components provide unsurpassed long-term durability meeting design requirements for use in virtually any location.
- **Aesthetics.** Dryvit finishes are available in a wide array of textures in both standard and custom colours. Our speciality finishes enable designers to replicate a variety of real stone or brick finishes from limestone to granite at a fraction of the cost.
- **Testing.** Independently certified by BBA and other international test bodies. Dryvit manufacturing plants are ISO 9001:2000 certified, demonstrating the highest standards of quality and consistency.



## DRYVIT ACR 300:

High performance crack resistant render.  
NBS Specification Clause - M20

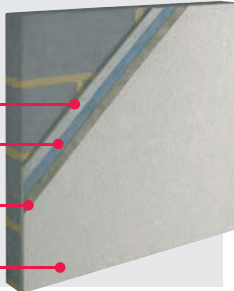
1. Optional Stucco Build™ levelling mortar depending on substrate conditions
2. Standard Mesh – glass fibre reinforcing mesh
3. NCB (tintable) – non-cementitious base coat
4. Dryvit PMR Finish - from standard or speciality finish ranges



## DRYVIT ACR 200:

Flexible crack resistant render.  
NBS Specification Clause - M20

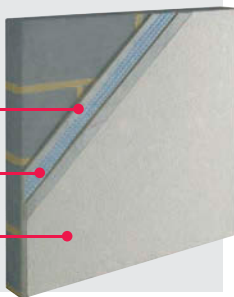
1. Optional Stucco Build™ levelling mortar depending on substrate conditions
2. Standard Mesh – glass fibre reinforcing mesh
3. Genesis™/DM – polymer modified cementitious base coat
4. Dryvit PMR Finish and Color Prime™ primer - from standard or speciality finish ranges



## DRYVIT ACR 150:

Reinforced re-profiling render with crack resistance. NBS Specification Clause - M20

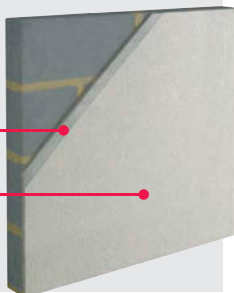
1. Stucco Build™ levelling mortar depending on substrate conditions
2. Ultramesh® – glass fibre reinforcing mesh embedded in Stucco build
3. Dryvit PMR Finish and Color Prime™ primer - from standard or speciality finish ranges



## DRYVIT ACR 50:

Cost effective acrylic render system.  
NBS Specification Clause - M20

1. Optional Stucco Build™ levelling mortar depending on substrate conditions
2. Dryvit PMR Finish and Color Prime™ primer - from standard or speciality finish ranges



## CEMENT BOARD MD FINISH SYSTEM™:

Anti-crack render system over cement board with drainage cavity. NBS Specification Clause - M20.

1. Dryvit Backstop® NT or other approved breather membrane
2. Timber batons – used to form drainage cavity and as support for cement board
3. Cement Board
4. Standard Mesh – glass fibre reinforcing mesh
5. Genesis™/DM/DMS – polymer modified cementitious base coat
6. Dryvit PMR Finish and Color Prime™ primer - from standard or speciality finish ranges



The systems outlined above have varying degrees of crack resistance and therefore depending of specific projects conditions movement joints may be required. Please consult Dryvit UK regarding appropriate system selection and specification.

## SUBSTRATE TYPES

Substrate	Dryvit ACR®				Cement Board MD Finish System™
	50	150	200	300	
Painted	●				
Concrete/Render Brick or Block	●	●	●	●	
Sheathing Board (soffits only)			●	●	
Cement Board on sheathed frame					●

For more detailed information on acceptable substrates and application tolerances please contact Dryvit.

## APPLICATION

Application of the systems are carried out by Specialist Installers employing operatives who have been trained in the use of Dryvit materials. In addition Dryvit are committed to providing on site support to their network of Specialist Installers when called upon.

Details of recommended Specialist Installers are available from Dryvit UK Ltd.

## STANDARD DETAILS

Standard details are available for both Dryvit ACR systems and the Cement Board MD Finish System and can be downloaded from [www.dryvit.co.uk](http://www.dryvit.co.uk).

Dryvit offers a CAD service to produce bespoke details in line with specific project needs.

## FINISHES

Dryvit 100% acrylic finishes contain quartz aggregates of various sizes and use Dirt Pickup Resistant (DPR) and Proven Mildew Resistance (PMR™) chemistry, ensuring the highest standard of fade resistance and ensuring low maintenance.

The standard finish range is available in five different textures with over 360 chart colours to select from. If your desired colour is not available from our standard finish range then we have a colour matching service that will be sure to satisfy your requirements. Even the look of natural stone, granite and brick is possible from our range of speciality finishes.

### STANDARD TEXTURE RANGE



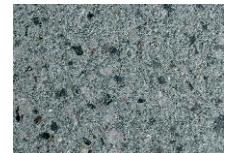
CUSTOM BRICK™



LYMESTONE™



TERRANEO®



## WARRANTY



- Standard 10 Year "Dryvit Warranty" available on all projects upon written request.
- 10 Year third party insurance backed warranties covering materials and installation –extended periods available.
- 'Back to Back' warranties available on request from partnering material suppliers and installers.

For more information on warranties please contact Dryvit UK Ltd. Or visit our web site [www.dryvit.co.uk](http://www.dryvit.co.uk).

## DRYVIT UK LTD

Unit 4 Wren Park, Hitchin Road,  
Shefford, Bedfordshire SG17 5JD

Tel: 01462 819555 Fax: 01462 819556

Email: [ukenquiries@dryvit.com](mailto:ukenquiries@dryvit.com) [www.dryvit.co.uk](http://www.dryvit.co.uk)

Printed in the UK R1: 10/05

©Dryvit UK Ltd. 2005

