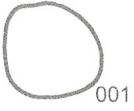


KEY



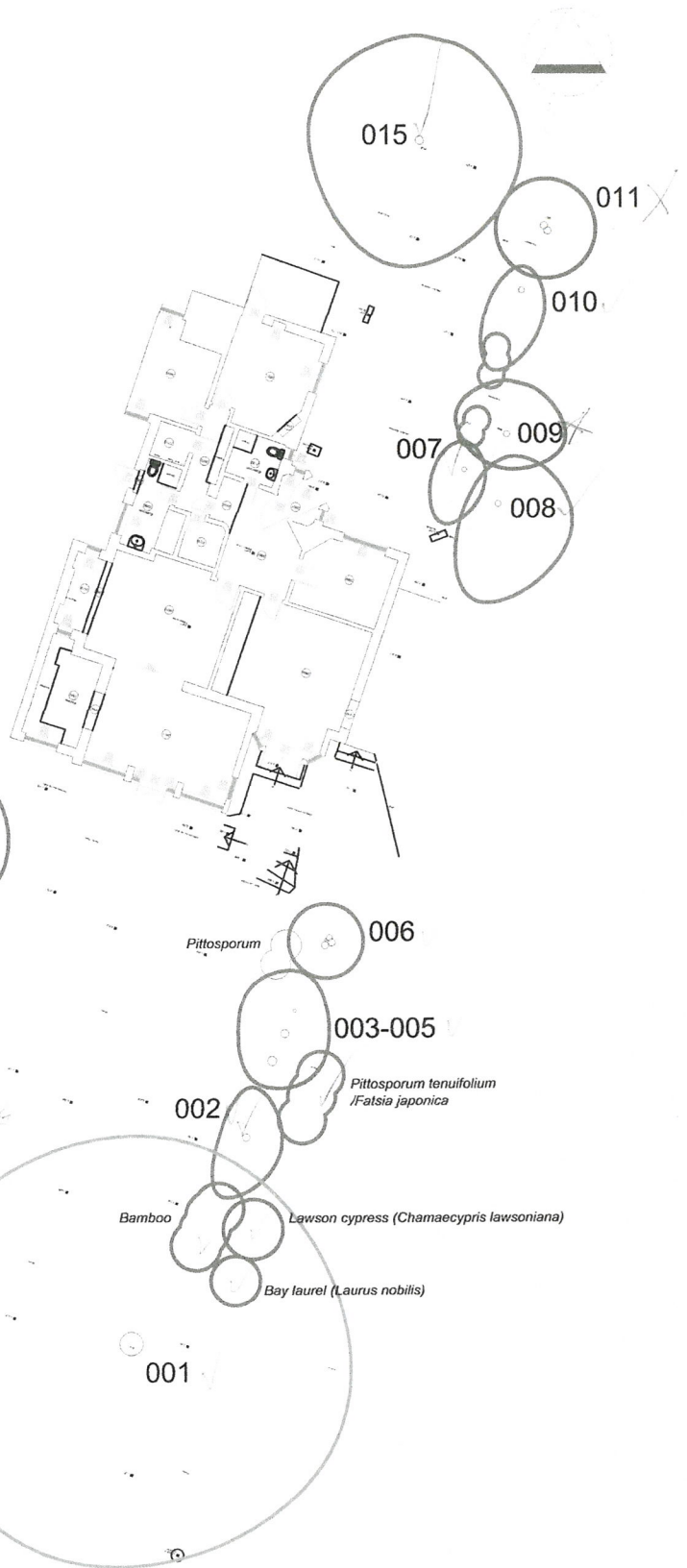
EXISTING TREE

Trees are coloured on plan to correspond to the Retention Categories specified in: *BS5837:2012 Trees in relation to design, demolition and construction - Recommendations* as follows:

- Category A - GREEN
- Category B - BLUE
- Category C - GREY
- Category U - RED



ROOT PROTECTION AREA as defined in *BS5837:2012 Trees in relation to design, demolition and construction - Recommendations*



<p>Client LHQ SERVICES LTD</p>	<p>Drawing Title TREE SURVEY PLAN</p>		<p style="text-align: center;">Skerratt arboricultural advice</p> <p style="text-align: center;">158 MALDEN ROAD, LONDON NW5 4BT 01274 566539</p>
<p>Site Title: 7 KIDDERPORE AVENUE LONDON NW3 7 QY</p>	<p>Date: 295.01.00</p> <p>Drawing Number: 05.08.14</p>	<p>Scale: 1:200 (A3)</p> <p>Drawn by: RS</p>	

Tree survey schedule

Tree No.	Species	Height (m)	Diam (mm)	Crown Spread (m)				Crown Height (m)	Age	Physiological Condition	Structural Condition	Comments	Recommendations	Life Expectancy	Retention Category	Retention Sub-category
				N	E	S	W									
001	Pedunculate Oak (<i>Quercus robur</i>)	17	950	9	9	9	9	4/2	M	G	G	Single very slightly leaning stem: crown open and well balanced overall: minor dead wood: an outstanding specimen	Remove dead wood	40+	A	1
002	Laurel (<i>Prunus laurocerasus</i>)	3	300 @ 0.5m	2	2	3	1	0/1	M	G	G	Single upright stem forks at .5m: low dense crown has been shaped by regular clipping	Continue current maintenance regime	20-40	C	2
003	Western Red Cedar (<i>Thuja plicata</i>)	4	360	2	2	1	2	0/0	M	G	G	003 to 004 inclusive make up a dense low level boundary screen: the height is maintained at 4m by regular pruning: the vertical face on the side facing into the rear garden of 7 Kidderpore Avenue has also been clipped regularly: crown dimensions are for the group as a whole	Continue current maintenance regime	40+	C	2
004	Western Red Cedar (<i>Thuja plicata</i>)	4	330	2	2	1	2	0/0	M	G	G	See 003	Continue current maintenance regime	50+	C	2
005	Variegated Western Red Cedar (<i>Thuja plicata 'Zebria'</i>)	4	130	2	2	1	2	0/0	M	G	G	See 003	Continue current maintenance regime	40+	C	2
006	Laurel (<i>Prunus laurocerasus</i>)	4	150/250/300/300	1.5	1.5	1.5	1.5	0/0	M	G	G	4 main stems: the dense low crown has been shaped by regular clipping	Continue current maintenance regime	40+	C	2
007	Pittosporum (<i>Pittosporum tenuifolium</i>)	2	200 @ 0.3m	1	1	2.5	1	0/0	M	G	G	Single upright stem forks near ground level: dense branch system has been shaped by regular clipping	Continue current maintenance regime	40+	C	2
008	Purple Leaved Plum (<i>Prunus cerasifera 'Atropurpurea'</i>)	7	250	2	3	4	1	1/2	M	G	F	Single upright stem forks at about 2m: rather one sided crown (to S): stands off-site in an adjacent garden:	No action required	20+	C	1/2
009	Lawson Cypress (<i>Chamaecyparis lawsoniana</i>)	10	250	2	2	1.5	2	3/3	M	P	P	Single upright stem: crown very much below average: dying: stands off-site in an adjacent garden	Remove	<10	U	1
010	Smoke Bush (<i>Cotinus coggygria</i>)	4	250 @ gl	1	1	3.5	1	0/0	M	F	F	Single leaning stem: dense branch system has been shaped by regular clipping	Continue current maintenance regime	40+	C	2
011	Laburnum (<i>Laburnum anagyroides</i>)	5	300/300	2	2	2	2	0/2	OM	P	P	Two main stems that fork immediately above ground level: major fungal decay (<i>Ganoderma applanatum</i>): almost dead	Remove	0	U	1
012	Pere David's Maple (<i>Acer davidii</i>)	8	300 est	3	3	3.5	3	1/2	EM	G	F	Single upright stem forks at 2m into 2: ascending rather narrow crown: stands off-site in a neighbouring garden	No action required	20-40	C	1/2
013	Flowering Cherry (<i>Prunus 'Kanzan'</i>)	3	50	1	1	1	1	0/0	Y	G	G	Single upright stem: well balanced crown: small enough to move easily	No action required	40+	C	1/2

Tree No.	Species	Height (m)	Diam (mm)	Crown Spread (m)				Crown Height (m)	Age	Physiological Condition	Structural Condition	Comments	Recommendations	Life Expectancy	Retention Category	Retention Sub-category
				N	E	S	W									
014	Horse Chestnut (<i>Aesculus hippocastanum</i>)	23	1000 est	9	9	9	9	4/4	M	G	Single upright stem forks at 4m into 2; well balanced crown; early signs of Horse Chestnut Leaf Miner attack at time of inspection; stands off-site in a neighbouring garden	No action required	10-20	A	1	
015	Purple Leaved Plum (<i>Prunus cerasifera</i> 'Atropurpurea')	7	330	4	4	5	4	1/2	M	G	Single upright stem forks at 1m into 4; well balanced crown; stands just off-site in a neighbouring garden; prominent in the Kidderpore Avenue street scene	No action required	20-40	B	1	

Explanatory notes

Recommendations

Preliminary management recommendations under existing conditions

Life expectancy

An approximate estimate for each tree's anticipated future safe life in the following ranges:

- <10 years
- 10-20 years
- 20-40 years
- 40+ years

Retention category

This grading is based on the recommendations set out in BS 5837:2012 *Trees in relation to design, demolition and construction - Recommendations*. The categories are summarised in the standard as follows:

- A Trees of high quality with an estimated remaining safe life of at least 40 years
- B Trees of moderate quality with an estimated remaining safe life of at least 20 years
- C Trees of low quality with an estimated remaining safe life of at least 10 years, or young trees with a stem diameter below 150mm
- U Trees in such a condition that they cannot realistically be retained as living trees in the context of the current land use for longer than 10 years

In addition the British Standard requires one or more subcategories to be applied to the main Retention Category. In summary these are as follows:

1. Mainly arboricultural qualities (that is individual aesthetic characteristics)
2. Mainly landscape qualities
3. Mainly cultural values, including conservation

Explanatory notes

For general information on any entry in the detailed survey text, refer to the notes below which are organised on a column by column basis.

Tree number

All trees have been numbered in the survey text to correspond to the location numbers shown on the accompanying Tree survey plan. No trees have been marked on site.

Species

Common English names have been used wherever possible and Latin names are listed (in brackets in *italics*) in all cases.

Dimensions

Height - are recorded in m.

Stem diameter – recorded in mm at breast height (1.5m) wherever possible. Where measurement at 1.5m is not possible, one of the alternative methods set out in *Annex C of BS5837:2012* has been used.

If the diameter has been measured at a different height, this has been recorded, e.g. 60 @ 1m = 60mm diameter at 1m height.

Other abbreviations used:

av - average	est/e - estimated
ms - multi-stemmed	max – maximum
	gl - ground level

Crown spread - radial crown spreads in metres have been recorded at four points on the circumference of the crown (north, east, south and west). The accompanying Tree survey plan shows approximate crown shapes based on these measurements

Crown height - the height of the first major branch and the height of the lowest point of the crown are recorded in metres eg 3/3