



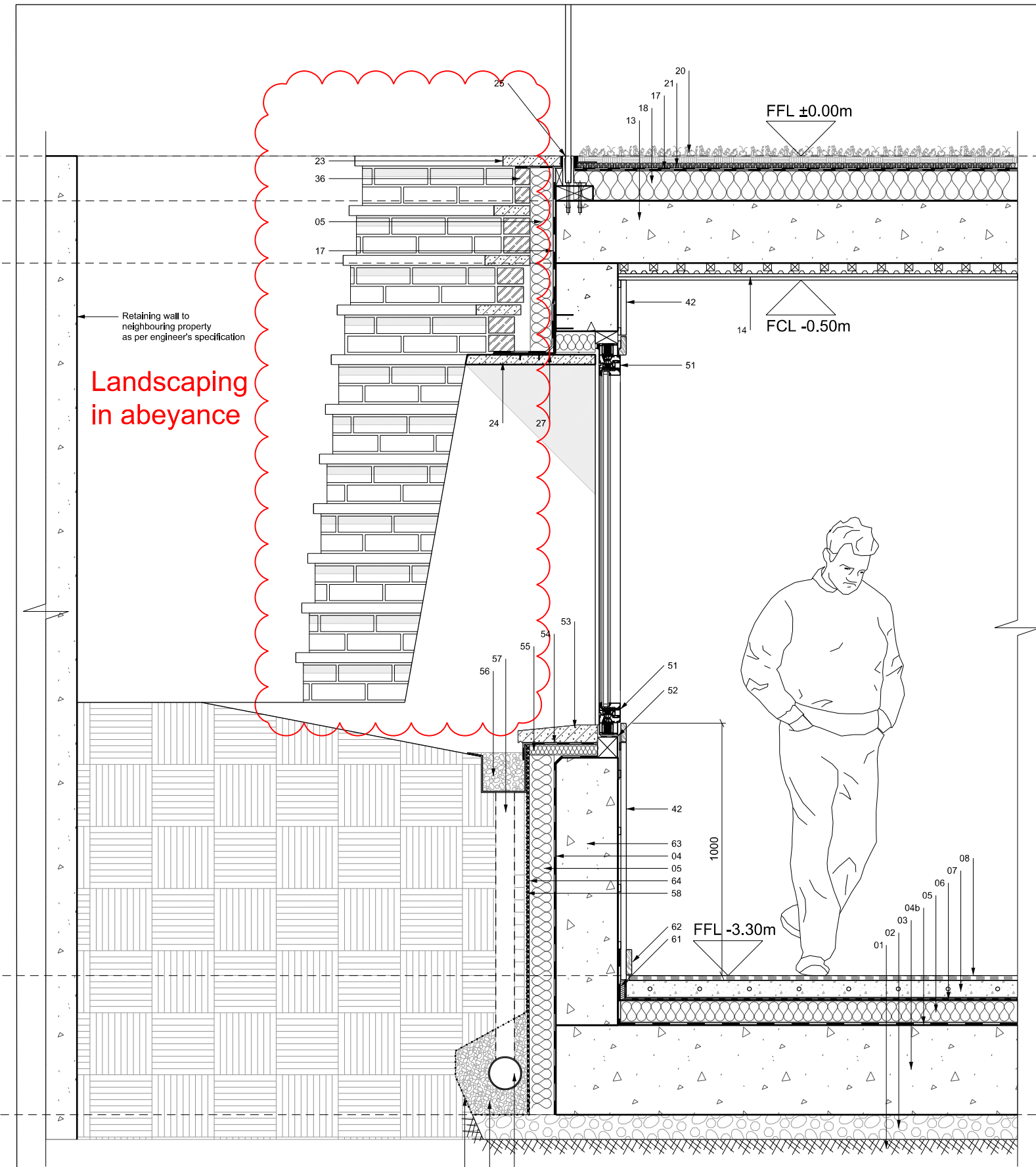
LHQ Services Ltd

Hampstead  
London  
NW3 7QY  
M. +447801482127  
Ph.020 7433 1612

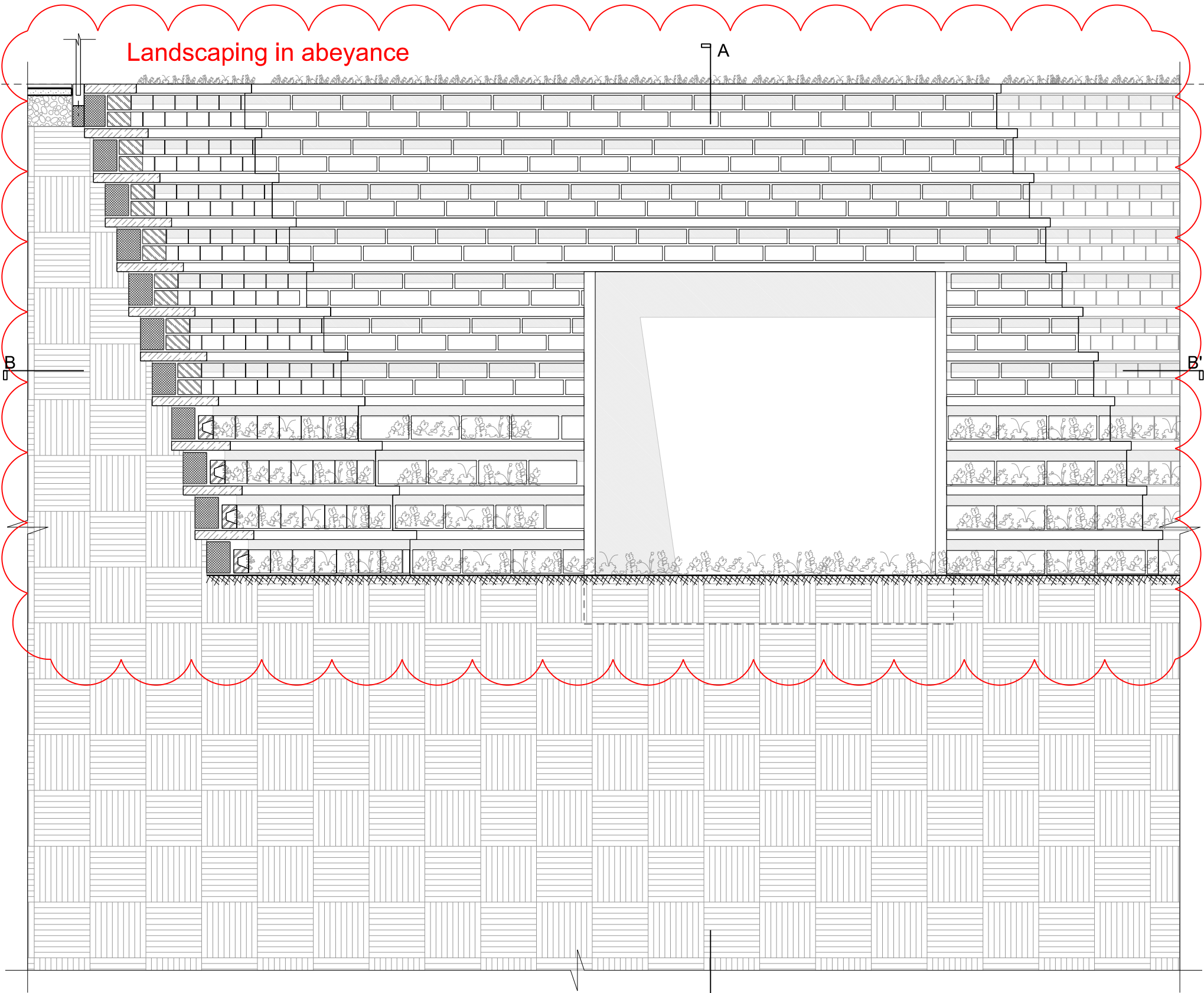
Revisions

No	Date	Description	by
----	------	-------------	----

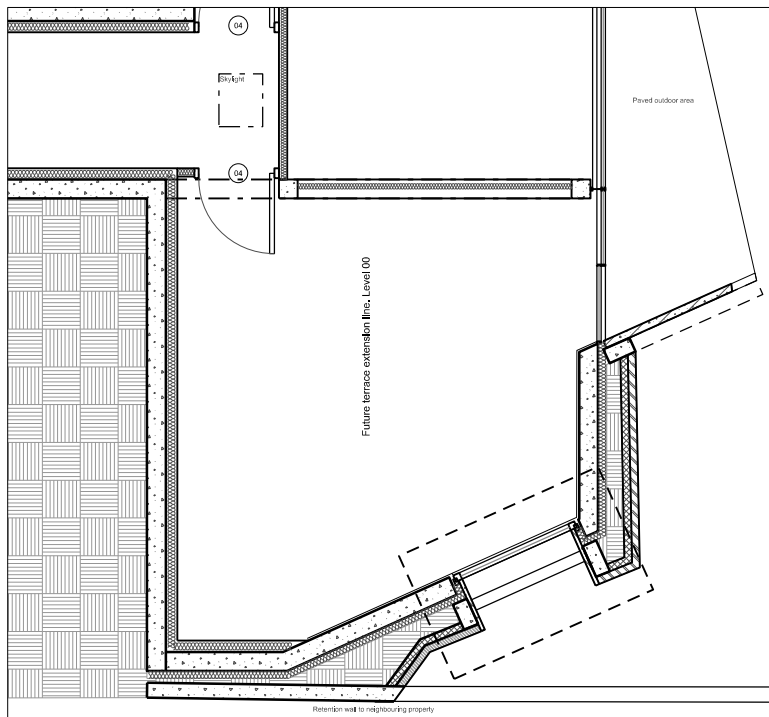
FOR TENDER



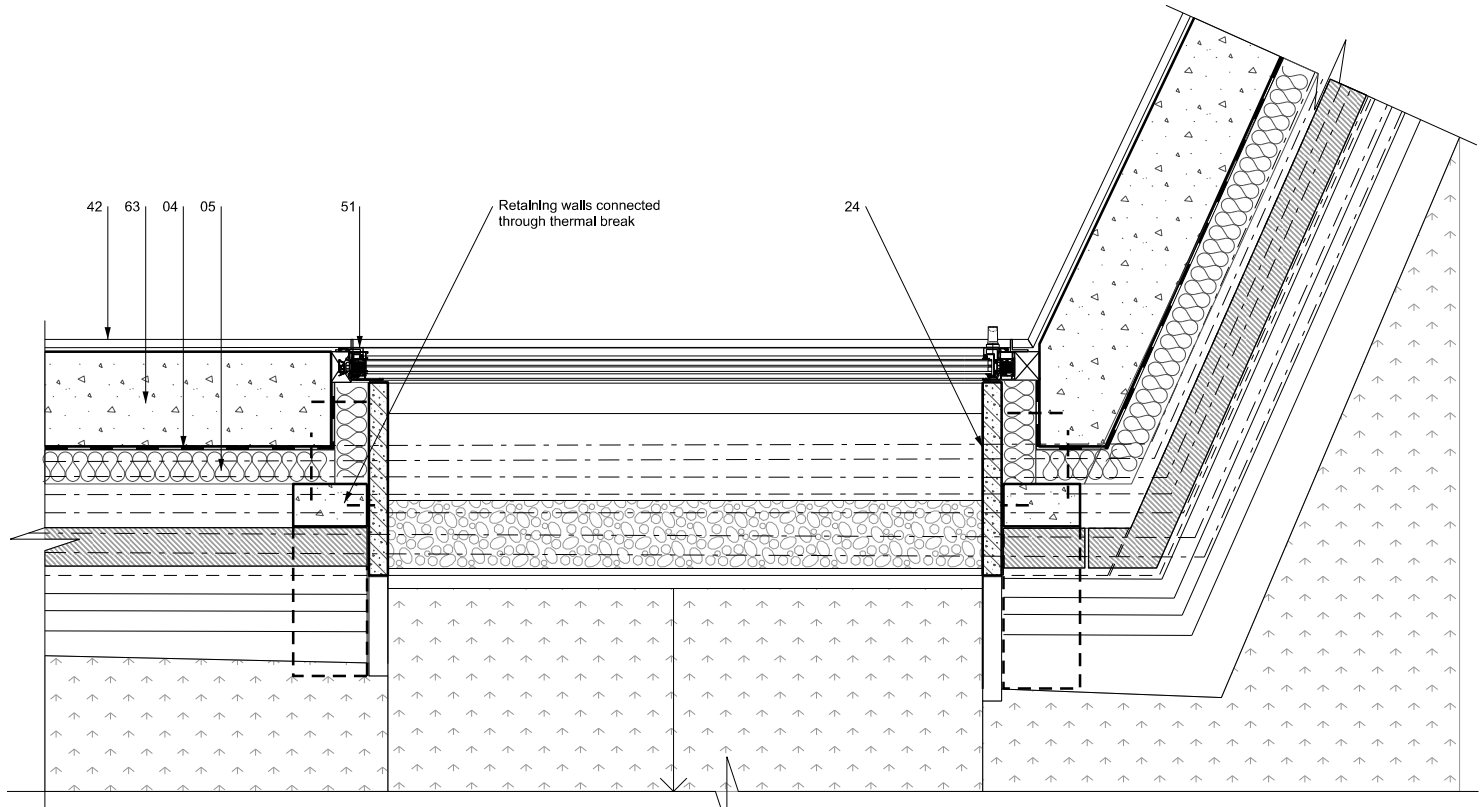
01 | Section A-A' (1:20 @ A2)



02 | Elevation (1:20 @ A2)



03 | Floorplan (1:100 @ A2)



04 | Section B-B' (1:20 @ A2)

01. Hardcore  
02. Sand blinding 50 mm  
03. Waterproof concrete slab, 350 mm  
04. Heavy tanking membrane  
04b. DPM  
05. Kingspan Styrozone rigid insulation 100mm  
06. Separation layer (Polyethene membrane)  
07. Reinforced floating screed with underfloor heating, 80mm  
08. Wooden floor 15mm  
09. Porcelain tiles 10mm  
10. Adhesive 5mm  
11. Bituminous paint for external walls  
12. Nu-Heat LoPro Max underfloor heating system  
13. Waterproof concrete slab 250mm  
14. Skimmed double plasterboard 12.5 + 15mm on resilient batts  
15. Porcelain tiles 20mm  
16. Adjustable pedestals  
17. Two ply hot applied bituminous roof felt with root protection membrane 9mm  
18. Tapered PIR Insulation 120mm  
19. Vapour control layer  
20. Extensive sedum matt 28mm  
21. Drainage membrane 20mm  
22. Wooden external decking  
23. 40mm GRC slabs to form garden steps  
24. GRC precast concrete frame (canopy and side walls)  
25. Glass balustrade with "frameless" channel fixing  
26. Skyframe double-glazed sliding doors  
27. Steel angle to fix GRC canopy, as per engineers specification  
28. Steel angle to fix sliding doors top frame, as per engineers specification  
29. Thermal and Acoustic insulation between existing joists: 120mm mineral wool  
30. Joist hangers to engineers specification  
31. 12mm Cement board  
32. Brick slips fixed to cement board  
33. Lead flashing  
34. Structural insulation composite with plywood and partially bonded built-up felt on firrings. 121 mm (Kingspan Thermafof TR31 or similar)  
35. Roof gutter. Extruded aluminium. Profile and colour TBC  
36. Stock brick to match existing walls  
37. Weepholes @450mm  
38. Continuous cavity tray  
39. Partial-fill cavity PIR insulation, 50mm  
40. Internal leaf. Concrete blockwork as per engineers spec.  
41. DPC membrane. Minimum 150mm above ground level  
42. Internal wall finishing. Plasterboard on battens  
43. Engineering brick F2 frost resistant  
44. Continuous Damp Proof Membrane  
45. 22mm WBP Plywood decking  
46. Concrete brick-faced arch. Brick slips to match existing brick  
47. Cavity closer  
48. Timber patio door to match existing doors (See Doors Schedule)  
49. Precast concrete cill  
50. Engineered timber floor boards  
51. Schuco Window AWS 75 BS. HI (See Windows Schedule).  
52. Steel angle to fix window  
53. GRC Window Cill  
54. DPM under window cill  
55. 40mm Rigid insulation under window cill  
56. Channel drain filled with gravel  
57. Drain pipe to connect channel and porous pipe (60)  
58. Geotextile membrane  
59. Gravel  
60. Underground drainage pipe  
61. Edge strip for floating screed  
62. Skirting (see Wall Types Schedule)  
63. Waterproof concrete walls to Engineers' spec.  
64. Drainage Membrane DELTA System External  
65. Slot drain  
66. Foamglass

Material Legend