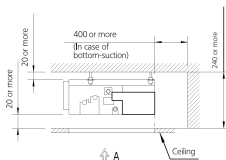
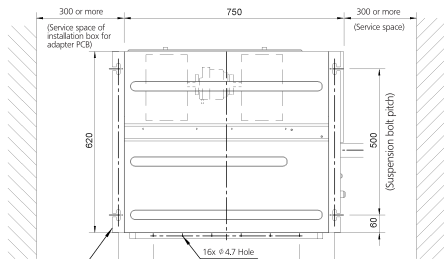
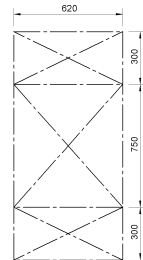


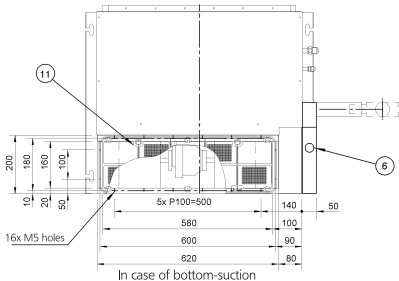
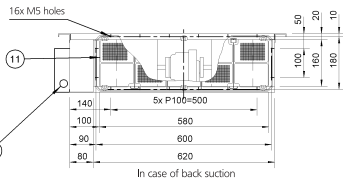
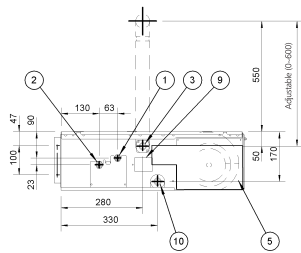
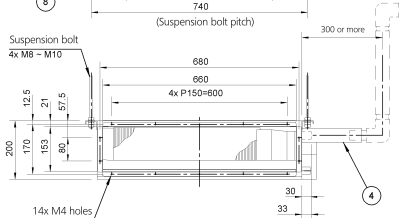
FXDQ15-32A



Service space



View A
Inspection door (ceiling opening)



1	Liquid pipe connection	ϕ 6.4 Flare connection
2	Gas pipe connection	ϕ 12.7 Flare connection
3	Drain pipe connection	VP 20 ISO ϕ 26, D ϕ 20
4	Drain hose (accessory)	ID ϕ 25 (Outlet)
5	control box	
6	Transmission wiring connection	
7	Power supply connection	
8	Suspension bracket	
9	Inspection cover	
10	Socket for drain	
11	Air filter (accessory)	

Notes

- In case of back-suction, mount chamber cover to bottom side of the unit.
In case of bottom-suction, mount chamber cover to back side of the unit.
- Location of unit's name plate: control box cover.
- Mount the air filter at the suction side. (Use an air filter whose dust collecting efficiency is at least 50% in a gravimetric technique). It can not be equipped with air filter (accessory) when connecting duct to suction side.