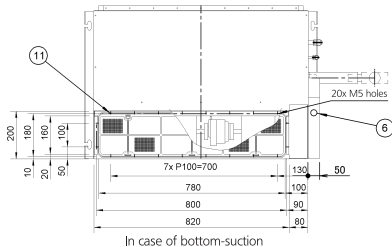
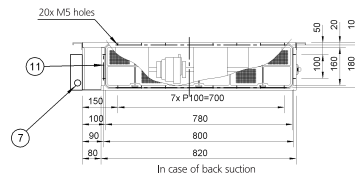
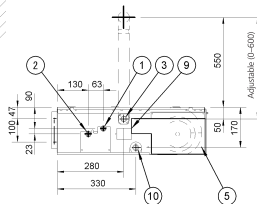
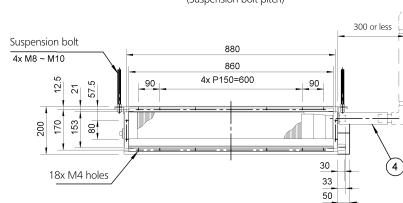
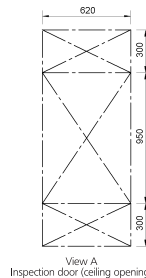
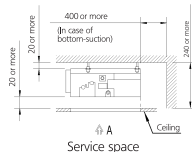
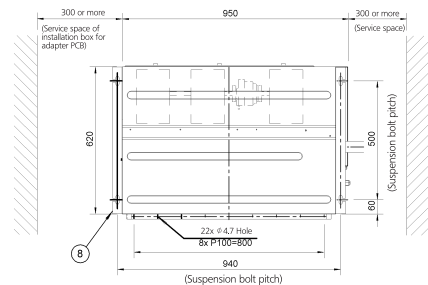


FXDQ40-50A



1	Liquid pipe connection	$\phi 6.4$ Fibre connection
2	Gas pipe connection	$\phi 12.7$ Fibre connection
3	Drain pipe connection	VP 20 ISO $\phi 26$, D $\phi 20$
4	Drain hose (accessory)	ID $\phi 25$ (Outlet)
5	control box	
6	Transmission wiring connection	
7	Power supply connection	
8	Suspension bracket	
9	Inspection cover	
10	Socket for drain	
11	Air filter (accessory)	

Notes

- In case of back-suction, mount chamber cover to bottom side of the unit.
In case of bottom-suction, mount chamber cover to back side of the unit.
- Location of unit's name plate: control box cover.
- Mount the air filter at the suction side. (Use an air filter whose dust collecting efficiency is at least 50% in a gravimetric technique). It can not be equipped with air filter (accessory) when connecting duct to suction side.