



Harland Works, Unit 7  
 70 John Street  
 Sheffield  
 S2 4QU  
 Tel. 0114 270 0014  
 Sheffield & London  
[www.nortonmayfield.co.uk](http://www.nortonmayfield.co.uk)

**DRAWING ISSUE SHEET**  
**Job Number 15-23**

<b>PROJECT:</b>	<b>Merlin House</b>				
<b>ISSUE DATE:</b>	DAY:	19	10	22	
	MONTH:	01	02	02	
	YEAR:	16	16	16	
<b>DRAWING:</b>	<b>NUMBER:</b>				
Site Location Plan	1523-NMA-XX-ZZ-DR-B-00001	S2/P1		S2/P1	
Site Plan	1523-NMA-XX-ZZ-DR-B-00002	S2/P1		S2/P1	
Existing: Lower floor plan	1523-NMA-XX-05-DR-B-00100	S2/P1	D2/P2	S2/P3	
Existing: Upper floor plan	1523-NMA-XX-06-DR-B-00100	S2/P1	D2/P2	S2/P3	
Existing: East elevation	1523-NMA-XX-ZZ-DR-B-00200	S2/P1		S2/P2	
Existing: South elevation	1523-NMA-XX-ZZ-DR-B-00201	S2/P1		S2/P2	
Existing: West elevation	1523-NMA-XX-ZZ-DR-B-00202	S2/P1		S2/P2	
Proposed: Lower floor plan	1523-NMA-XX-05-DR-A-00100	S2/P1	D2/P2	S2/P3	
Proposed: Upper floor plan	1523-NMA-XX-06-DR-A-00100	S2/P1	D2/P2	S2/P3	
Proposed: East elevation	1523-NMA-XX-ZZ-DR-A-00200	S2/P1		S2/P2	
Proposed: South elevation	1523-NMA-XX-ZZ-DR-A-00201	S2/P1		S2/P2	
Proposed: West elevation	1523-NMA-XX-ZZ-DR-A-00202	S2/P1		S2/P2	
Design and Access Statement		v01		v02	
Client					
Planning		/		/	
Buidling Control					
Structural Engineer					
Environment Agency					
Tenderers			/		
PAPER COPY					
DISC (D=DWG P=PDF)					
E-MAIL (D=DWG P=PDF)		P	P	P	

## Understanding British Standard drawing naming, numbering and issuing.

Norton Mayfield Architects are making the transition to Building Information Modelling [BIM].

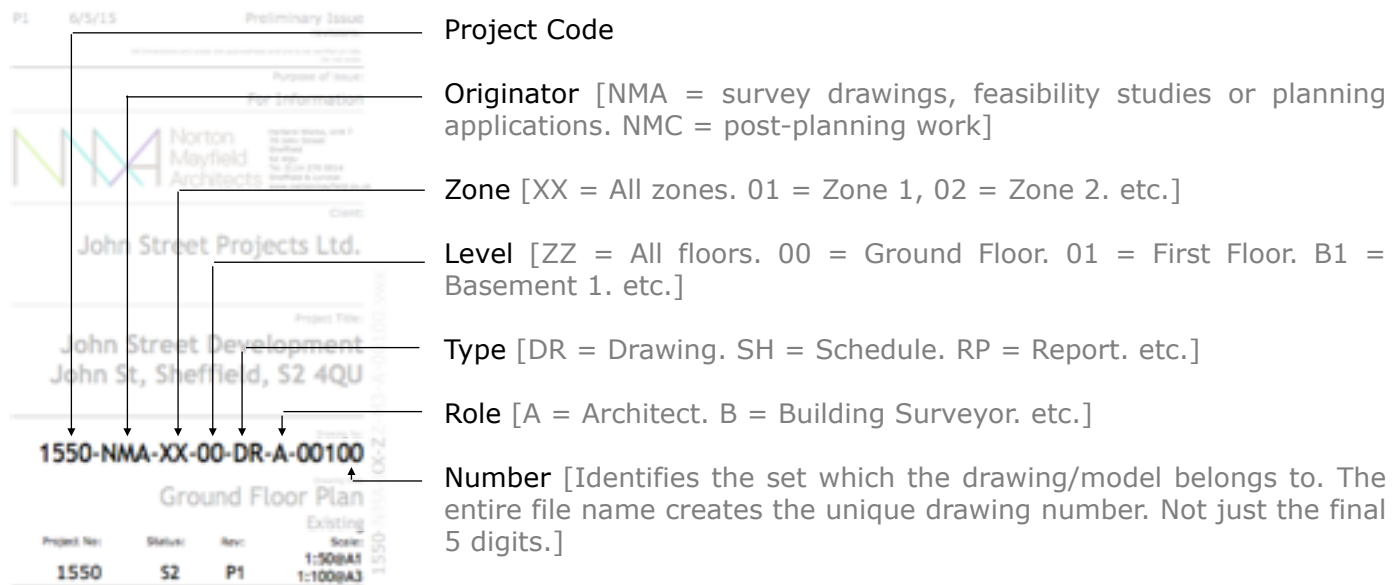
As part of this transition we have adopted the British Standard [BS 1192:2007] for drawing naming and numbering. We hope to improve our collaboration with clients, consultants and contractors as a result.

This sheet summarises the key changes but please get in touch if you would like a more detailed explanation.

### Drawing/document numbers

Drawing numbers are created from a string of 7 codes. When all 7 codes are read together they create a unique drawing or document number.

We will all need to get used to reading drawing numbers differently from now on:



### Status

The British Standard [BS] requires information to have a status code. Status codes define the suitability of information for a specific purpose. It allows control over the use to which information can be put. This will avoid errors or ambiguities from occurring.

The following codes will be used:

- |                                |                                 |
|--------------------------------|---------------------------------|
| S1: For Coordination only.     | D1: For Costing only.           |
| S2: For Information.           | D2: For Tender only.            |
| S3: For Internal Review.       | D3: For Contractor Design only. |
| S4: For Construction Approval. | D4: For Procurement only.       |
- A: Approved for construction  
B: Approved for construction with minor comments  
[All minor comments will be indicated by a cloud and the statement 'In Abeyance' until the comment is resolved and approved].  
AB: As Built

### Revision Codes

The BS requires information to have a revision code noted separately to the status of the drawing.

Prior to approval for construction revisions will be numbered sequentially with the prefix P. e.g P1, P2, P3, etc.

Once drawings have been authorised for construction [Status A or B] revisions will be numbered sequentially with the prefix C. e.g C1, C2, C3 etc.

### Reading Status and Revision Codes Together

Revision codes will always increase as each set of drawings is issued. Status codes, however, can increase or decrease dependant on the suitability of the information.

For example, drawings could become more resolved [working towards construction] or less resolved [as a result of major changes required at planning]. Always ensure the status code on the drawing is appropriate for the purpose which you require it for.

Folders will be used to denote the status and revision of a drawing when it is issued electronically.