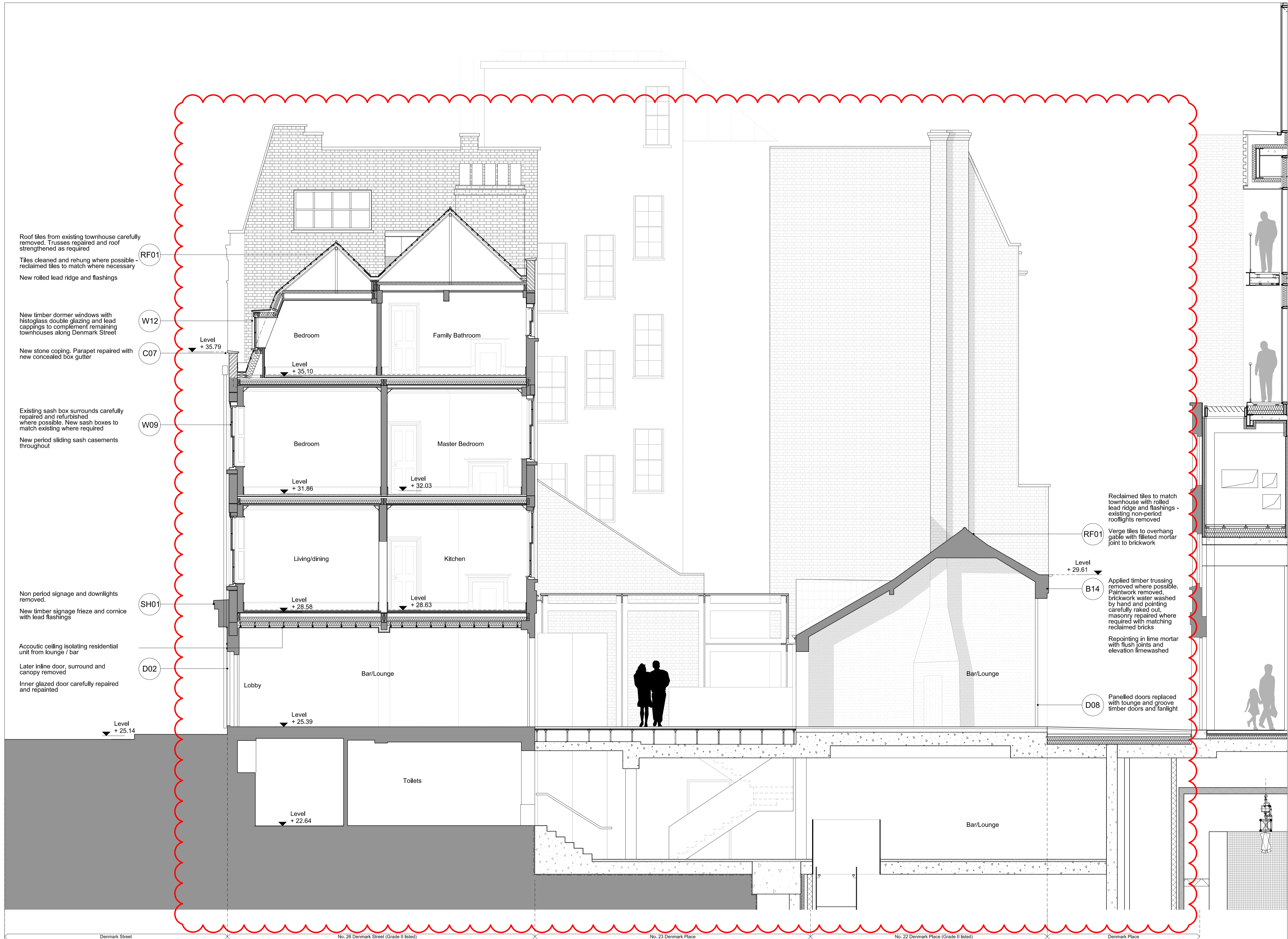
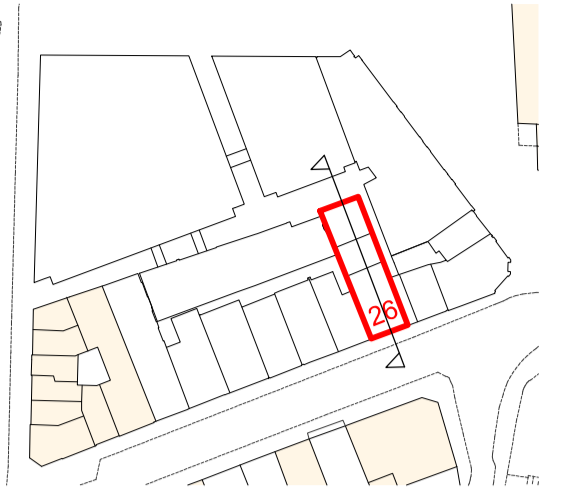


Notes: All internal furniture layouts are indicative only.



RF01  
Roof tiles from existing townhouse carefully removed. Trusses repaired and roof strengthened as required  
Tiles cleaned and rehung where possible - reclaimed tiles to match where necessary  
New rolled lead ridge and flashings

W12  
New timber dormer windows with histoglass double glazing and lead cappings to complement remaining townhouses along Denmark Street

C07  
New stone coping. Parapet repaired with new concealed box gutter

W09  
Existing sash box surrounds carefully repaired and refurbished where possible. New sash boxes to match existing where required  
New period sliding sash casements throughout

SH01  
Non period signage and downlights removed.  
New timber signage frieze and cornice with lead flashings

D02  
Acoustic ceiling isolating residential unit from lounge / bar  
Later inline door, surround and canopy removed  
Inner glazed door carefully repaired and repainted

RF01  
Reclaimed tiles to match townhouse with rolled lead ridge and flashings - existing non-period rooflights removed  
Verge tiles to overhang gable with filleted mortar joint to brickwork

B14  
Applied timber trussing removed where possible. Paintwork removed, brickwork water washed by hand and pointing carefully raked out, masonry repaired where required with matching reclaimed bricks  
Repointing in lime mortar with flush joints and elevation limewashed

D08  
Panelled doors replaced with tongue and groove timber doors and fanlight

P7	23.02.16	Changes as clouded Issued for Planning
P6	04.12.15	Changes as clouded Issued for Planning
P5	11.11.15	Changes as clouded Draft MMA Pack
P4	25.09.15	Changes as clouded Draft MMA Pack
-	14.12.12	Issued for Planning

**FOR PLANNING**

Revision:

**ORMS**  
Architecture Design  
1 Pine Street London EC1R 0JH  
T 0207 833 8533 F 0207 837 7575  
E orms@orms.co.uk

Project **ST GILES CIRCUS**

Drawing title **Nos. 26 Denmark Street and 22/23 Denmark Place Proposed Long Section**

Scale 1:50 @ A1 Drwg. No. **1793PL018-07** Rev. **P7**

Date August '12

Status  For information  For tender  For construction

Do not scale. All dimensions to be confirmed on site. Information contained in this drawing is the sole copyright of ORMS Designers & Architects Ltd. and is not to be reproduced without permission.

