

Camden Development Policies 2010-2025

Local Development Framework



**If you would like this document in large print
or Braille, or in another language, please
contact 020 7974 5615**

Find out more about this document and the LDF by visiting camden.gov.uk/ldf
or by calling the LDF hotline 020 7974 5615/2043.

Forward Planning
London Borough of Camden
Town Hall Extension
Argyle Street
London WC1H 8EQ

Published November 2010.

Camden's Local Development Framework. Development Policies.

Improving and protecting our environment and quality of life

DP24. Securing high quality design

- 24.1 Core Strategy policy CS14 – *Promoting high quality places and conserving our heritage* sets out the Council’s overall strategy on promoting high quality places, seeking to ensure that Camden’s places and buildings are attractive, safe, healthy and easy to use and requiring development to be of the highest standard of design that respects local context and character. Camden has a unique and rich built and natural heritage, with many areas with their own distinct character, created by a variety of elements including building style and layout, history, natural environment including open spaces and gardens, and mix of uses. We have a duty to respect these areas and buildings and, where possible, enhance them when constructing new buildings and in alterations and extensions.
- 24.2 Policy DP24 contributes to implementing the Core Strategy by setting out our detailed approach to the design of new developments and alterations and extensions. These principles will ensure that all parts of Camden’s environment are designed to the highest possible standards and contribute to providing a healthy, safe and attractive environment.
- 24.3 The Core Strategy also sets out our approach to other matters related to design, such as tackling climate change through promoting higher standards (CS13), the importance of community safety and security (CS17) and protecting amenity from new development (CS5). Further guidance on design is contained in our Camden Planning Guidance supplementary document.

DP POLICY

DP24 – Securing high quality design

The Council will require all developments, including alterations and extensions to existing buildings, to be of the highest standard of design and will expect developments to consider:

- | | |
|---|--|
| <ul style="list-style-type: none"> a) character, setting, context and the form and scale of neighbouring buildings; b) the character and proportions of the existing building, where alterations and extensions are proposed; c) the quality of materials to be used; d) the provision of visually interesting frontages at street level; | <ul style="list-style-type: none"> e) the appropriate location for building services equipment; f) existing natural features, such as topography and trees; g) the provision of appropriate hard and soft landscaping including boundary treatments; h) the provision of appropriate amenity space; and i) accessibility. |
|---|--|



Promoting good design

- 24.4 The Council is committed to design excellence and a key strategic objective of the borough is to promote high quality, sustainable design. This is not just about the aesthetic appearance of the environment, but also about enabling an improved quality of life, equality of opportunity and economic growth. We will therefore apply policy DP24 to ensure that all developments throughout the borough, including alterations and extensions to existing buildings, are of the highest standard of design. In accordance with government guidance in Planning Policy Statement (PPS) 1 – *Delivering Sustainable Development* we will not accept design that is inappropriate to its context or which fails to take opportunities to improve the character and quality of an area and the way that it is used by residents and visitors.
- 24.5 Camden is a densely built-up borough where most development involves the replacement, extension or conversion of existing buildings. Design should respond creatively to its site and its context. This concerns both smaller-scale alterations and extensions and larger developments, the design and layout of which should take into account the pattern and size of blocks, open spaces, gardens and streets in the surrounding area (the ‘urban grain’).
- 24.6 The Council seeks to encourage outstanding architecture and design, both in contemporary and more traditional styles. Innovative design can greatly enhance the built environment and, unless a scheme is within an area of homogenous architectural style that is important to retain, high quality contemporary design will be welcomed. When assessing design, we will take into account government/CABE guidance *By Design – Urban Design in the planning system: towards better practice* and our own Camden Planning Guidance supplementary document.
- 24.7 Development should consider:
- the character and constraints of its site;
 - the prevailing pattern, density and scale of surrounding development;
 - the impact on existing rhythms, symmetries and uniformities in the townscape;
 - the compatibility of materials, their quality, texture, tone and colour;
 - the composition of elevations;
 - the suitability of the proposed design to its intended use;
 - its contribution to public realm, and its impact on views and vistas; and
 - the wider historic environment and buildings, spaces and features of local historic value.
- 24.8 Buildings should be designed to be as sustainable as possible. Environmental design and construction measures are set out in Policy DP22 – *Promoting sustainable design and construction*. Sustainable development also embraces principles of social sustainability which can be addressed by new development which:
- provides comfortable, safe, healthy and accessible space for its users;
 - is fit for purpose and can accommodate future flexibility of use;
 - provides a mix of uses and types of accommodation and provides for a range of needs within the community; and
 - provides sufficient amenity space for the promotion of health and wellbeing.



- 24.9 The re-use of existing buildings preserves the ‘embodied’ energy expended in their original construction, minimises construction waste and reduces the use of new materials. Many historic buildings display qualities that are environmentally sustainable and have directly contributed to their survival, for example the use of durable, natural, locally sourced materials, ‘soft’ construction methods, good room proportions, natural light and ventilation and ease of alteration. The retention and adaptation of existing buildings will be encouraged.
- 24.10 Due to the dense nature of Camden with extensive range and coverage of heritage assets, such as conservation areas, numerous listed buildings and five strategic views and two background views crossing the borough, the Council does not consider that it is practical to identify broad areas either suitable, or not suitable, for tall buildings. In the borough, a site may be suitable for a tall building while adjacent sites are not, due to impact on either views, conservations areas or listed buildings. Indeed, in some cases, suitability for a tall building differs across a single site. Given Camden’s strategic environmental characteristics, the entire borough is considered as being within the ‘sensitive’ category, as defined by the English Heritage/CABE Guidance on Tall Buildings (2007). Tall building proposals in Camden will therefore merit detailed design assessments. As part of the revision of the Camden Planning Guidance SPD further clarity will be provided on tall buildings and design issues in Camden.

Respecting local character

- 24.11 Given the highly built-up nature of Camden, careful consideration of the characteristics of a site, features of local distinctiveness, and the wider context is needed in order to achieve high quality development which integrates into its surroundings.
- 24.12 In order to best preserve and enhance the positive elements of local character within the borough, we need to recognise and understand the factors that create it. Designs for new buildings, and alterations and extensions, should respect the character and appearance of the local area and neighbouring buildings. Within areas of distinctive character, development should reinforce those elements which create the character. Where townscape is particularly uniform attention should be paid to responding closely to the prevailing scale, form and proportions and materials. In areas of low quality or where no pattern prevails, development should improve the quality of an area and give a stronger identity.
- 24.13 Development should not undermine any existing uniformity of a street or ignore patterns or groupings of buildings. Overly large extensions can disfigure a building and upset its proportions. Extensions should therefore be subordinate to the original building in terms of scale and situation unless, exceptionally, it is demonstrated that this is not appropriate given the specific circumstances of the building. Past alterations or extensions to surrounding properties should not necessarily be regarded as a precedent for subsequent proposals for alterations and extensions.
- 24.13 Design and Access statements should include an assessment of local context and character, and set out how the development has been informed by, and responds to it. We have prepared a series of Conservation Area Statements, Appraisals and Management Plans which describe the character and appearance of individual conservation areas and set out how the Council considers each can be conserved and enhanced. These should be used by developers to inform their understanding of the special character of the area, and we will take these into account when assessing development proposals in conservation areas. Development Policy DP25 – *Conserving Camden’s heritage* provides further guidance on the preservation and enhancement of the historic environment.

Detailing and materials

- 24.15 Architectural detailing should be carefully integrated into a building. In new development, detailing should be carefully considered so that it conveys quality of design and creates an attractive and interesting building. Architectural features on existing buildings, such as cornices, mouldings, architraves, porches and chimneys should be retained wherever possible, as their loss can harm a building by eroding its detailing. The insensitive replacement of windows and doors and the cladding and painting of masonry can also spoil the appearance of buildings and can be particularly damaging if the building forms part of a uniform group.
- 24.16 Schemes should incorporate materials of an appropriately high quality. The durability and visual attractiveness of materials will be carefully considered along with their texture, colour and compatibility with existing materials. Alterations and extensions should be carried out in materials that match the original or neighbouring buildings, or, where appropriate, in materials that complement or enhance a building or area.

Contributing to the street frontage

- 24.17 Buildings should be visually interesting at street level, with entrances and windows used to create active frontages, which allow overlooking of public areas, provide a sense of vitality and contribute to making Camden a safer place (see Core Strategy policy CS17). Ground floors should be occupied by active uses and should not turn their back on streets and other public spaces.

Incorporating building services equipment

- 24.18 Building services equipment, such as air cooling, heating, ventilation and extraction systems, lift and mechanical equipment, as well as fire escapes, ancillary plant and ducting should be contained within the envelope of a building or be located in a visually inconspicuous position.

Responding to natural features

- 24.19 New developments should respond to the natural assets of a site and its surroundings, such as slopes and height differences, trees and other vegetation. Extensions and new developments should not cause the loss of any existing natural habitats, including private gardens. Core Strategy policy CS15 – *Protecting and improving our parks and open spaces and encouraging biodiversity* provides further guidance on nature conservation in Camden and the Council's strategy for trees.
- 24.20 Development within rear gardens and other undeveloped areas can often have a significant impact upon the amenity and character of an area. Gardens help shape their local area, provide a setting for buildings and can be important visually. Therefore they can be an important element in the character and identity of an area (its 'sense of place'). We will resist development that occupies an excessive part of a garden, and where there is a loss of garden space which contributes to the character of the townscape.
- 24.21 Development will not be permitted which fails to preserve or is likely to damage trees on a site which make a significant contribution to the character and amenity of an area. Where appropriate the Council will seek to ensure that developments make adequate provision for the planting and growth to maturity of large trees.





Incorporating Landscaping

24.22 As with buildings, consideration of context is essential in the design of new hard and soft landscaping. Hard landscape elements (surfaces, boundary treatments etc), and the materials from which they are made, play a significant role in defining the character and attractiveness of a site or area and reinforcing local distinctiveness. New planting can contribute to the attractiveness of a development, soften and balance the impact of buildings and contribute to the biodiversity value of a site. Effective maintenance is often essential to the success of soft landscaping (shrubs, grass etc) and, where appropriate, the Council will expect planting plans to be accompanied by a maintenance schedule. New hard and soft landscaping should be of high quality and should positively respond to its local character.

Providing amenity space

24.23 Private outdoor amenity space can add significantly to resident's quality of life and applicants are therefore encouraged to explore all options for the provision of new private outdoor space. Gardens, balconies and roof terraces are greatly valued and can be especially important for families. However, the densely built up nature of the borough means that the provision of private amenity space can be challenging, and the Council will require that the residential amenity of neighbours be preserved, in accordance with policy DP26 – *Managing the impact of development on occupiers and neighbours* and Core Strategy policy CS5 – *Managing the impact of growth and development*.

Accessibility

24.24 In line with policy DP29 – *Improving access* the Council will expect all buildings and places to meet the highest practicable standards of access and inclusion. Any adaptation of existing buildings must therefore address this issue and respond to access needs whilst ensuring that alterations are sympathetic to the building's character and appearance. Policy DP25 – *Conserving Camden's heritage* provides further guidance on providing access to listed buildings.

Key evidence and references

- By Design: Urban Design in the Planning System – Towards Better Practice; DETR/CABE; 2000
- Planning Policy Statement (PPS) 1 – Delivering Sustainable Development, 2005
- Planning Policy Statement (PPS) 12 – Local Spatial Planning, 2008
- Making design policy work, CABE; 2005
- The London Plan (consolidated with alterations since 2004); Mayor of London; 2008
- Building in Context, CABE/English Heritage, 2002
- Tree and Woodland Framework for London, Mayor of London, 2005

DP25. Conserving Camden’s heritage

- 25.1 Camden has inherited a rich architectural heritage with many special places and buildings from many different eras in the area’s history, from the historic villages of Hampstead and Highgate to Georgian squares and John Nash’s Regent’s Park terraces, from the Victorian engineering of St Pancras Station to iconic modern structures such as Centrepoint. These places and buildings add to the quality of our lives by giving a sense of local distinctiveness, identity and history. 39 areas, covering much of the borough, are designated as conservation areas, recognising their special architectural or historic interest and their character and appearance. Also, thousands of buildings in Camden are nationally listed for their special historical or architectural interest (see map 3). We have a responsibility to preserve and, where possible, enhance these areas and buildings. This policy helps to implement Core Strategy policy CS14 – *Promoting high quality places and conserving our heritage*.

DP POLICY

DP25 – Conserving Camden’s heritage

Conservation areas

In order to maintain the character of Camden’s conservation areas, the Council will:

- a) take account of conservation area statements, appraisals and management plans when assessing applications within conservation areas;
- b) only permit development within conservation areas that preserves and enhances the character and appearance of the area;
- c) prevent the total or substantial demolition of an unlisted building that makes a positive contribution to the character or appearance of a conservation area where this harms the character or appearance of the conservation area, unless exceptional circumstances are shown that outweigh the case for retention;
- d) not permit development outside of a conservation area that causes harm to the character and appearance of that conservation area; and
- e) preserve trees and garden spaces which contribute to the character of a conservation area and which provide a setting for Camden’s architectural heritage.

Listed buildings

To preserve or enhance the borough’s listed buildings, the Council will:

- e) prevent the total or substantial demolition of a listed building unless exceptional circumstances are shown that outweigh the case for retention;
- f) only grant consent for a change of use or alterations and extensions to a listed building where it considers this would not cause harm to the special interest of the building; and
- g) not permit development that it considers would cause harm to the setting of a listed building.

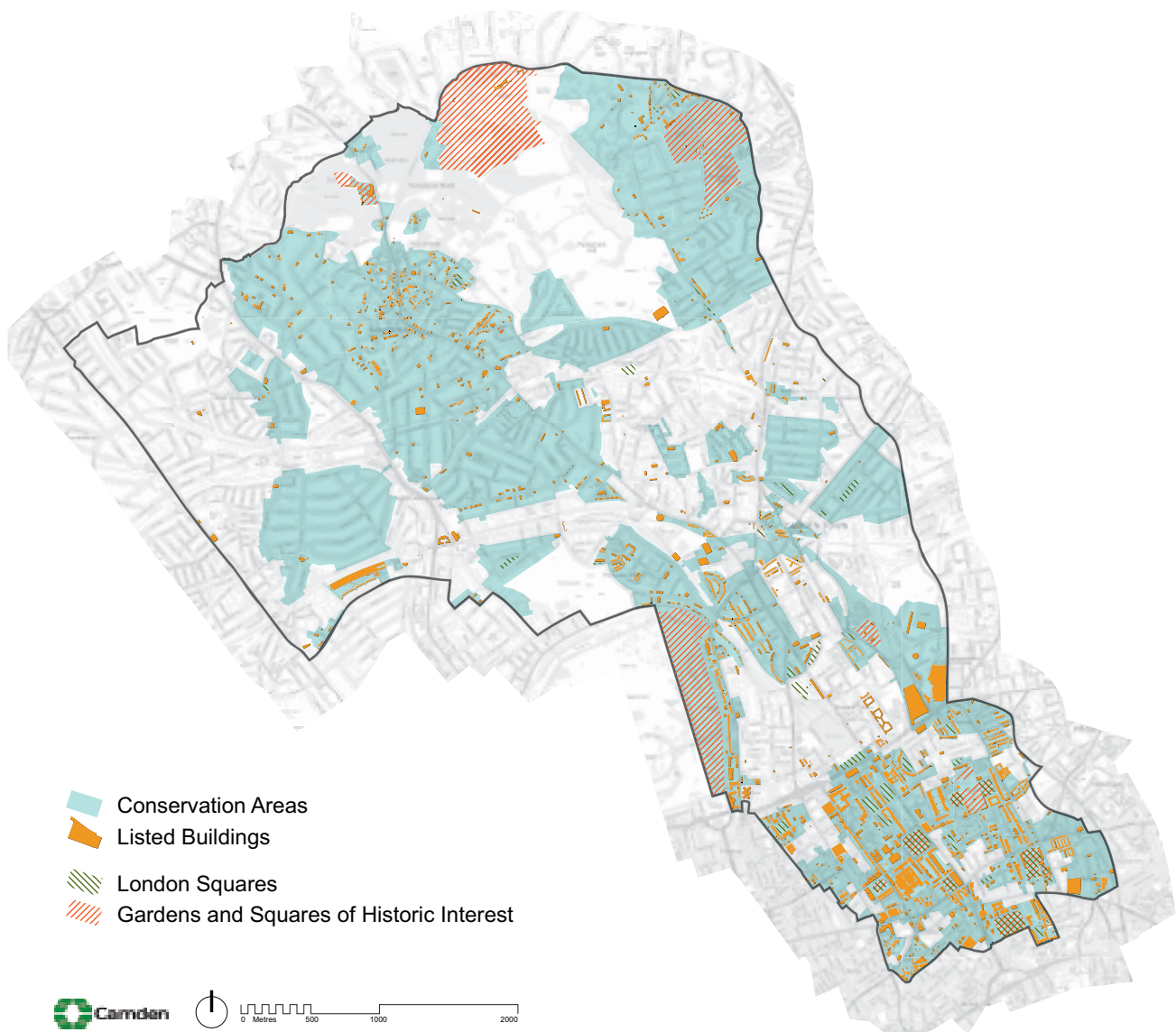
Archaeology

The Council will protect remains of archaeological importance by ensuring acceptable measures are taken to preserve them and their setting, including physical preservation, where appropriate.

Other heritage assets

The Council will seek to protect other heritage assets including Parks and Gardens of Special Historic Interest and London Squares.

Map 3: Heritage



This map is based on Ordnance Survey Material with the permission of Ordnance Survey on behalf of the Controller of Her Majesty's Stationery Office ©. Unauthorised reproduction infringes Crown copyright and may lead to prosecution or civil proceedings. Licence number LA100019726, year 2010.

Conservation Areas

- 25.2 In order to preserve and enhance important elements of local character, we need to recognise and understand the factors that create this character. The Council has prepared a series of conservation area statements, appraisals and management plans that assess and analyse the character and appearance of each of our conservation areas and set out how we consider they can be preserved and enhanced. We will take these into account when assessing planning applications for development in conservation areas. We will seek to manage change in a way that retains the distinctive characters of our conservation areas and will expect new development to contribute positively to this. The Council will therefore only grant planning permission for development in Camden's conservation areas that preserves and enhances the special character or appearance of the area. The character of conservation areas derive from the combination of a number of factors, including scale, density, pattern of development, landscape, topography, open space, materials, architectural detailing, and uses. These elements should be identified and responded to in the design of new development. Design and Access Statements should include an assessment of local context and character, and set out how the development has been informed by it and responds to it.

- 25.3 The character and appearance of a conservation area can be eroded through the loss of traditional architectural details such as historic windows and doors, characteristic rooftops, garden settings and boundary treatments. Where alterations are proposed they should be undertaken in a material of a similar appearance to the existing. Traditional features should be retained or reinstated where they have been lost, using examples on neighbouring houses and streets to inform the restoration. The Council will consider the introduction of Article 4 Directions to remove permitted development rights for the removal or alterations of traditional details where the character and appearance of a conservation area is considered to be under threat.
- 25.4 Historic buildings in conservation areas can be sensitively adapted to meet the needs of climate change and energy saving – preserving their special interest and ensuring their long term survival. For detailed advice on energy saving in historic buildings and conservation areas visit the English Heritage website and our Camden Planning Guidance supplementary document. Changes in patterns of use can also erode the character of an area. It is therefore important that, whenever possible, uses which contribute to the character of a conservation area are not displaced by redevelopment.
- 25.5 The value of existing gardens, trees and landscaping to the character of the borough is described in DP24 – Securing High Quality Design, and they make a particular contribution to conservation areas. Development will not be permitted which causes the loss of trees and/or garden space where this is important to the character and appearance of a conservation area. DP27 – Basements and lightwells provides further guidance on this issue where landscaping may be affected by basements and other underground structures.
- 25.6 The Council has a general presumption in favour of retaining buildings that make a positive contribution to the character or appearance of a conservation area, whether they are listed or not so as to preserve the character and appearance of the conservation area. We will not grant conservation area consent for the total or substantial demolition of such a building where this would harm the appearance of the conservation area, unless exceptional circumstances are shown that outweigh the case for retention. Applicants will be required to justify the demolition of a building that makes a positive contribution to a conservation area, having regard to Policy HE7 of Planning Policy Statement (PPS) 5: Planning for the Historic Environment, Camden’s conservation area statements, appraisals and management plans and any other relevant supplementary guidance produced by the Council.

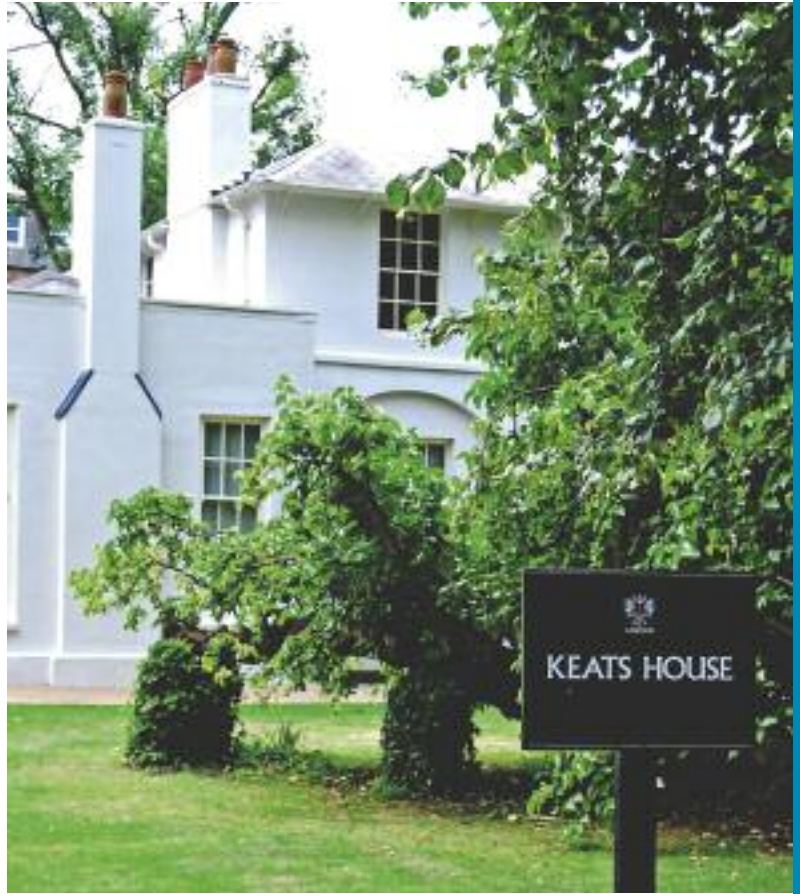


- 25.7 When considering applications for demolition, the Council will take account of group value, context and setting of buildings, as well as their quality as individual structures and any contribution to the setting of listed buildings. Applications must clearly show which buildings or parts of buildings are to be demolished.
- 25.8 Applications for total or substantial demolition in conservation areas must demonstrate to the Council's satisfaction that effective measures will be taken during demolition and building works to ensure structural stability of retained parts and adjoining structures. Before conservation area consent for demolition is granted, the Council must be satisfied that there are acceptable detailed plans for the redevelopment. Any replacement building should enhance the conservation area to an appreciably greater extent than the existing building. When a building makes little or no contribution to the character and appearance of a conservation area, any replacement building should enhance the conservation area to an appreciably greater extent than the existing building.
- 25.9 Due to the largely dense urban nature of Camden, the character or appearance of our conservation areas can also be affected by development which is outside of conservation areas, but visible from within them. This includes high or bulky buildings, which can have an impact on areas some distance away, as well as adjacent premises. The Council will therefore not permit development in locations outside conservation areas that it considers would cause harm to the character, appearance or setting of such an area.
- 25.10 Our Camden Planning Guidance supplementary document provides further information on our approach to conservation areas.

Listed buildings

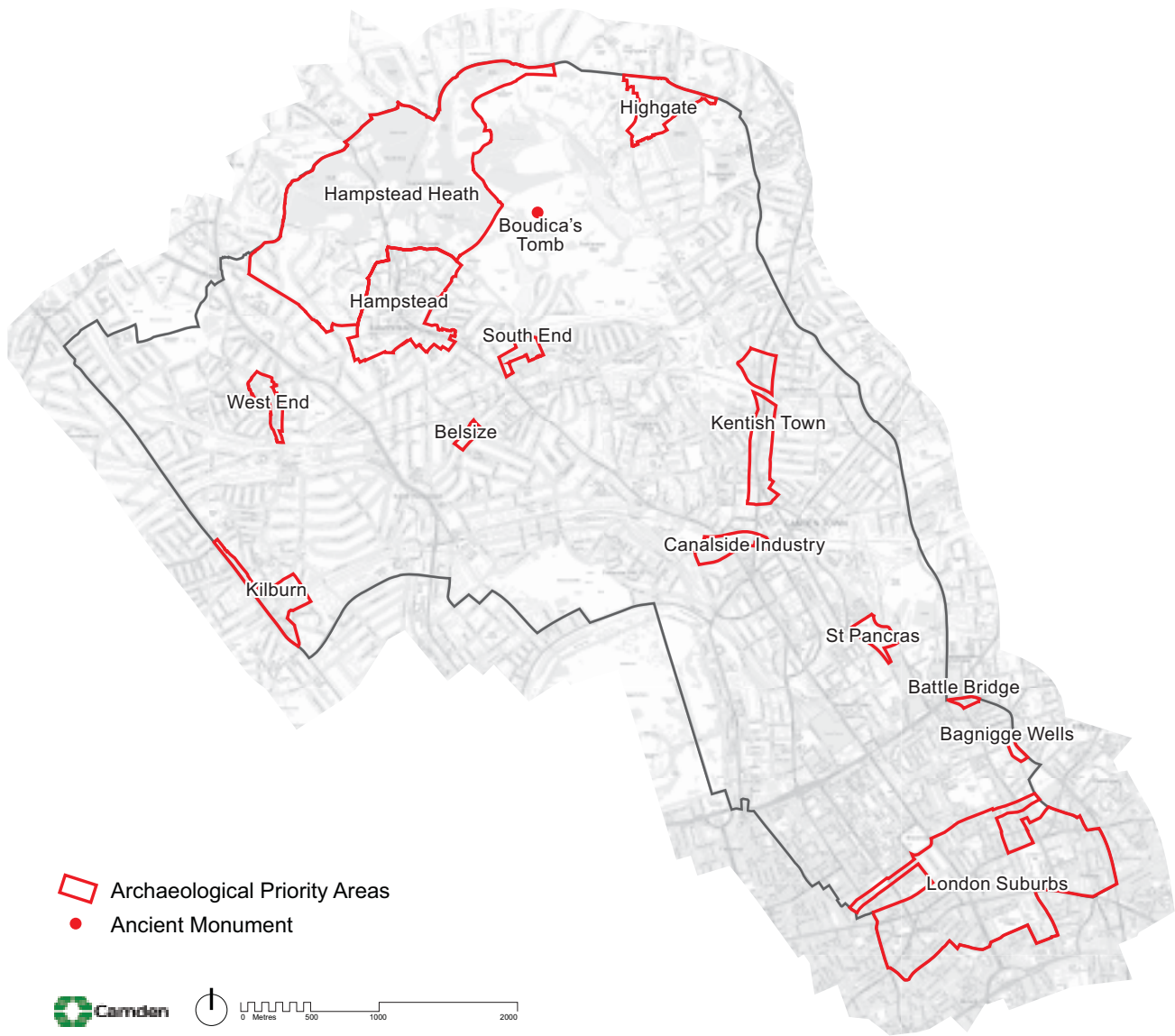
- 25.11 Camden's listed buildings and structures provide a rich and unique historic and architectural legacy. They make an important and valued contribution to the appearance of the borough and provide places to live and work in, well known visitor attractions, and cherished local landmarks. We have a duty to preserve and maintain these for present and future generations. There are over 5,600 buildings and structures in Camden that are on the statutory list for their special architectural or historic interest.
- 25.12 The Council has a general presumption in favour of the preservation of listed buildings. Total demolition, substantial demolition and rebuilding behind the façade of a listed building will not normally be considered acceptable. The matters which will be taken into consideration in an application for the total or substantial demolition of a listed building are those set out in Policy HE7 of PPS5.





- 25.13 In order to protect listed buildings, the Council will control external and internal works that affect their special architectural or historic interest. Consent is required for any alterations, including some repairs, which would affect the special interest of a listed building. The matters which will be taken into consideration in an application for alterations and extensions to a listed building are those set out in Policy HE7 of PPS5.
- 25.14 Where listed buildings are being altered for the provision of access for people with disabilities, the Council will balance their needs with the interests of conservation and preservation. We will expect design approaches to be fully informed by an audit of conservation constraints and access needs, and to have considered all available options. The listed nature of a building does not preclude the development of inclusive design solutions, and the Council expects sensitivity and creativity to be employed in achieving solutions that meet the needs of accessibility and conservation.
- 25.15 The setting of a listed building is of great importance and should not be harmed by unsympathetic neighbouring development. While the setting of a listed building may be limited to its immediate surroundings, it often can extend some distance from it. The value of a listed building can be greatly diminished if unsympathetic development elsewhere harms its appearance or its harmonious relationship with its surroundings. Applicants will be expected to provide sufficient information about the proposed development and its relationship with its immediate setting, in the form of a design statement.
- 25.16 Proposals that reduce the energy consumption of listed buildings will be welcomed provided that they do not cause harm to the special architectural and historic interest of the building or group. Energy use can be reduced by means that do not harm the fabric or appearance of the building, for instance roof insulation, draught proofing and secondary glazing, more efficient boilers and heating/lighting systems, and use of green energy sources. Depending on the form of the building, renewable energy technologies may also be installed, for instance solar water heating and photovoltaics.
- 25.17 Our Camden Planning Guidance supplementary document provides further information on our approach to listed buildings.

Map 4: Archaeological Priority Areas



This map is based on Ordnance Survey Material with the permission of Ordnance Survey on behalf of the Controller of Her Majesty's Stationery Office ©. Unauthorised reproduction infringes Crown copyright and may lead to prosecution or civil proceedings. Licence number LA100019726, year 2010.

Archaeology

25.18 Camden has a rich archaeological heritage comprised of both above and below ground remains, in the form of individual finds, evidence of former settlements and standing structures. These remains are vulnerable to modern development and land use. There are 13 archaeological priority areas in the borough (see map 4):

- | | | |
|------------------------|------------------|---------------------------|
| Hampstead Heath | Hampstead | Highgate |
| London Suburbs | South End | Bagnigge Wells |
| St Pancras | West End | Canalside Industry |
| Kentish Town | Kilburn | |
| Battle Bridge | Belsize | |

- 25.19 The archaeological priority areas provide a general guide to areas of archaeological remains, but do not indicate every find site in the borough. These are based on current knowledge and may be refined or altered as a result of future archaeological research or discoveries.
- 25.20 It is likely that archaeological remains will be found throughout the borough, both within and outside the archaeological priority areas. Many archaeological remains have yet to be discovered, so their extent and significance is not known. When researching the development potential of a site, developers should, in all cases, assess whether the site is known or is likely to contain archaeological remains. Where there is good reason to believe that there are remains of archaeological importance on a site, the Council will consider directing applicants to supply further details of proposed developments, including the results of archaeological desk-based assessment and field evaluation. Scheduled monument consent must be obtained before any alterations are made to scheduled ancient monuments. Camden has only one scheduled ancient monument: Boadicea's Grave in Hampstead Heath.
- 25.21 If important archaeological remains are found, the Council will seek to resist development which adversely affects remains and to minimise the impact of development schemes by requiring either in situ preservation or a programme of excavation, recording, publication and archiving of remains. There will usually be a presumption in favour of in situ preservation of remains and, if important archaeological remains are found, measures should be adopted to allow the remains to be permanently preserved in situ. Where in situ preservation is not feasible, no development shall take place until satisfactory excavation and recording of the remains has been carried out on site, and subsequent analysis, publication and archiving undertaken by an archaeological organisation approved by the Council.
- 25.22 The Council will consult with, and be guided by, English Heritage and the Greater London Archaeology Advisory Service (GLAAS) on the archaeological implications of development proposals. The Greater London Sites and Monuments Record, maintained by English Heritage, contains further information on archaeological sites in Camden. When considering schemes involving archaeological remains, the Council will also have regard to government Planning Policy Guidance (PPG) 16 – Archaeology and Planning.

Other heritage assets

- 25.23 In addition to conservation areas, listed buildings and archaeological remains, Camden contains 14 Parks and Gardens of Special Historic Interest, as identified by English Heritage. There are also 53 London Squares in the borough protected by the London Squares Preservation Act 1931. The Council will encourage the management of Parks and Gardens of Special Historic Interest and London Squares to maintain, and where appropriate, enhance their value and protect their setting. As set out within Core Strategy policy CS14 – *Promoting high quality places and conserving our heritage*, we will consult with English Heritage over proposals affecting these parks and gardens.

Key evidence and references

- Greater London Sites and Monuments Record; English Heritage
- Guidance on conservation area appraisals, English Heritage, 2006
- Guidance on the management of conservation areas, English Heritage, 2006