



Not too cool for school!

Enhance, Replace, Complement > Setting the standard in GRP [construction](#) finishes

'This content requires Media Player 12.2 Update. Would you like to install it now ?

Ads by ViewPassword

Ad Options

Cladding & Wall Panels

Architectural Features

Window Features

Extraction Flue Covers

Chimneys

Extraction Flue Covers

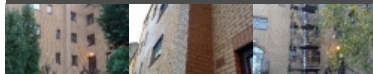
Our extraction flue covers have been specifically designed to camouflage unsightly extraction flues used on commercial and domestic premises. The covers can be made in any finish, to replicate the finish on the existing building, including brick effect, stone effect, render and concrete.

Covers can be made to encase extraction flues of any shape and size and can be installed quickly over simple timber or metal frames.

Further details and fitting instructions are available on the [Installation](#) page.



[more info >](#)



Like Tweet

3

Extraction Flue Covers

Project: Burns Design

Location: Glasgow

Product: Extraction Flue Covers

GRP Building Products manufactured a special brick effect cover to mask a very large extraction flue on the rear of a restaurant in Glasgow.

The brickwork and mortar were matched to the surrounding buildings.



Client

Pruno Restaurant

Location

Liverpool

Product type

Extraction Flue Covers

Product

GRP Brick Effect Flue Cover

Project

The client required a cover to mask a large extraction flue on the back of the restaurant building. We worked closely with Town Planning Consultants [Roman Summer](#) to develop a suitable solution and provided the contractors with advice and guidance on the installation of the timber frame and subsequent fitting of the cover.

Extraction Flue Covers



Client

Burns Design

Location

Glasgow

Product type

Extraction Flue Covers

Product

Brick Effect Flue Cover

Project

GRP [Building Products](#) manufactured a special brick effect cover to mask a very large extraction flue on the rear of a restaurant in Glasgow.

The brickwork and mortar were matched to the surrounding buildings.



Ads by ViewPassword

Ad Options

Extraction Flue Covers

**Client**

Scott Heating & Ventilation Ltd

Location

St Ives, Cambridge

Product type

Extraction Flue Covers

Product

Restaurant Extraction Flue Cover

Project

GRP Building Products has manufactured a lightweight cover to mask a large **metal extraction flue** installed on the back of a restaurant development.

Working from photographs of the site provided by the client, the **grp brick effect cover** was matched to the existing brickwork, disguising the flue at the request of Planners.

The cover was supplied in two sided sections to fit to the building, with a four sided section at the top where the flue was completely exposed.

The client fitted guttering and drainpipes around the cover to suit.

Extraction Flue Covers

**Client**

Bolt & Heeks Construction Ltd

Location

Willesden, London

Product type

Extraction Flue Covers

Product

GRP Brick Effect Extraction Flue Cover

Project

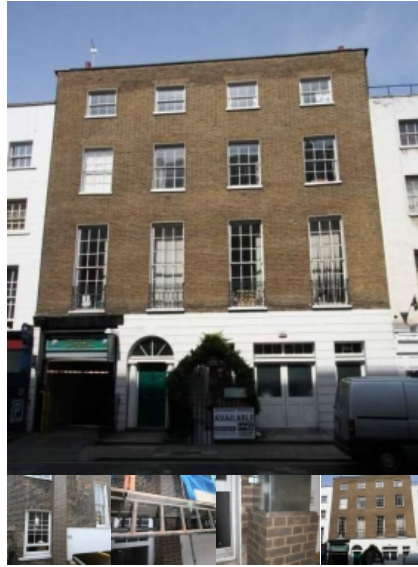
GRP Building Products was commissioned to produce a lightweight cover to mask a large **metal extraction flue** installed on the side of a church building. This was a new concept to the architect and contractor and GRP Building Products worked closely with them to provide guidance and technical assistance.

The **grp brick effect cover** was matched to the existing brickwork and has provided an acceptable solution to Planners.

The cover was supplied in sections and fitted onto a metal frame around the flue. The client selected to fix the flue cover onto the frame using a tek screw system. Some sections of the cover are easily removal to allow for maintenance of the flue.



Extraction Flue Covers



Client

Damian Connolly Architects

Location

Westminster, London

Product type

Extraction Flue Covers

Product

Restaurant extraction flue cover

Project

GRP Building Products was commissioned to produce a lightweight cover to mask a large metal extraction flue on a restaurant in a Grade 2 listed building within a conservation area.

The brick effect cover has proved an ideal solution to an issue which was threatening to blight the restaurant development in the capital.

The planning authority stipulated that the extraction flue would have to be covered so that it would blend in with the Flemish Bond style brickwork.

The cover was made in sections with the fibreglass laid onto a lightweight metal frame, making it easily fitted to the side of the building.

[↑ Back To Top](#)

