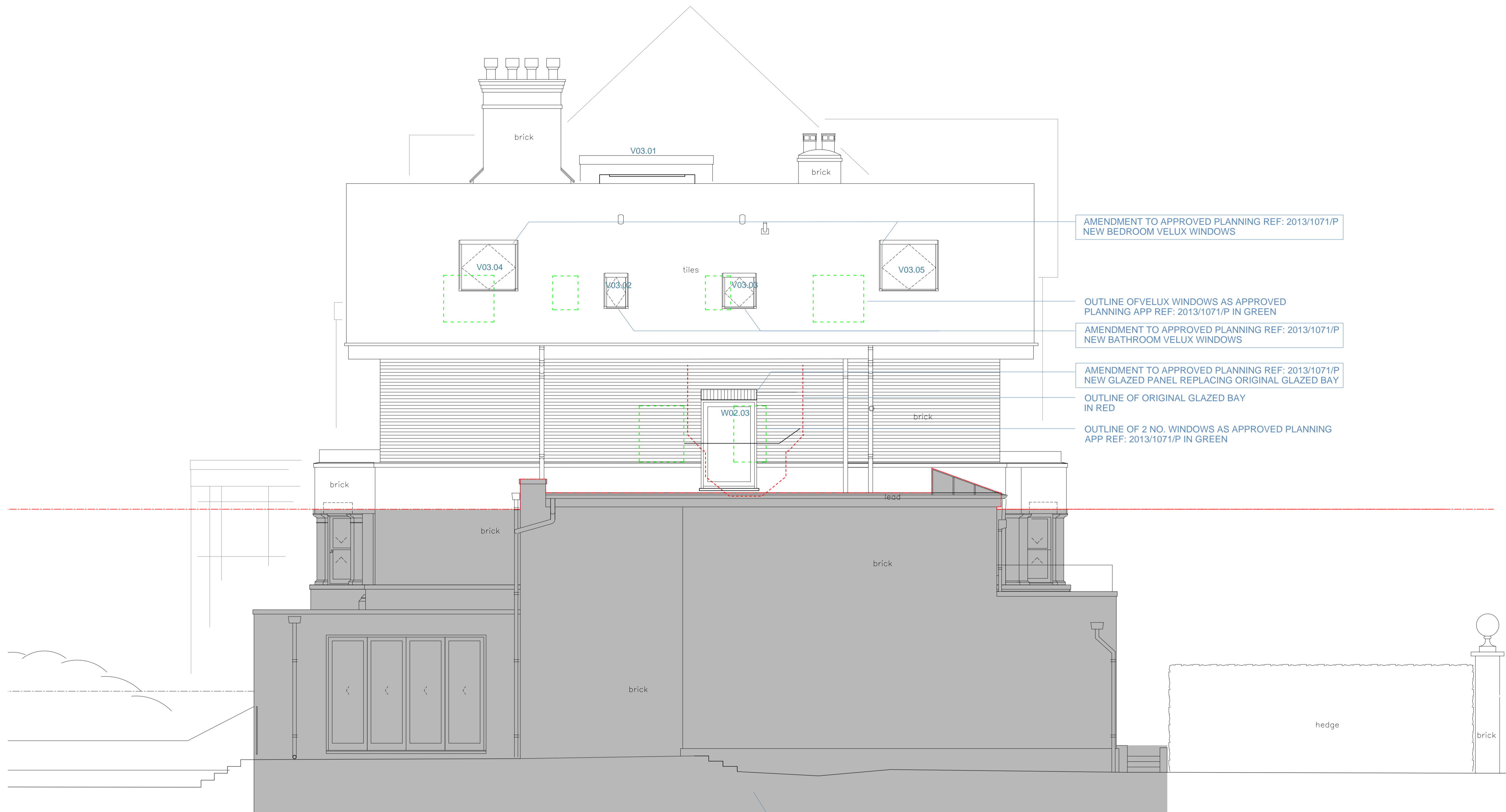


**Notes:**

Copyright of this drawing and the contents remain with Pennington Phillips Limited. Do not scale from the drawings except for planning purposes. The contractor is to verify dimensions on site prior to the commencement of work. Any discrepancies are to be reported to the designer. If in doubt - seek clarification.



AMENDMENT TO APPROVED PLANNING REF: 2013/1071/P  
NEW BEDROOM VELUX WINDOWS

OUTLINE OF VELUX WINDOWS AS APPROVED  
PLANNING APP REF: 2013/1071/P IN GREEN

AMENDMENT TO APPROVED PLANNING REF: 2013/1071/P  
NEW BATHROOM VELUX WINDOWS

AMENDMENT TO APPROVED PLANNING REF: 2013/1071/P  
NEW GLAZED PANEL REPLACING ORIGINAL GLAZED BAY

OUTLINE OF ORIGINAL GLAZED BAY  
IN RED

OUTLINE OF 2 NO. WINDOWS AS APPROVED PLANNING  
APP REF: 2013/1071/P IN GREEN

Scale 1:50 @ A1 / 1:100 @ A3



① **SIDE (south) ELEVATION**  
1:50 @ A1 & 1:100 @ A3

SHADED AREA DENOTES FLAT  
BELOW NOT PART OF THIS  
APPLICATION

Rev.	Date	Remarks

**Rev. Date Remarks**

<b>Project</b>	Flat B, 45 Maresfield Gardens
<b>Drawing</b>	Pr Side (south) Elevation
<b>Scale</b>	1:50 @ A1 & 1:100 @ A3
<b>Date</b>	07/11/14
<b>Rev</b>	C
<b>Status</b>	Construction
<b>Drawing No.</b>	5848/44

Approved



16 Spectrum House  
32-34 Gordon House Road  
London NW5 1LP  
Tel - 020 7267 1414  
Fax - 020 7267 7878

www.penningtonphillips.co.uk