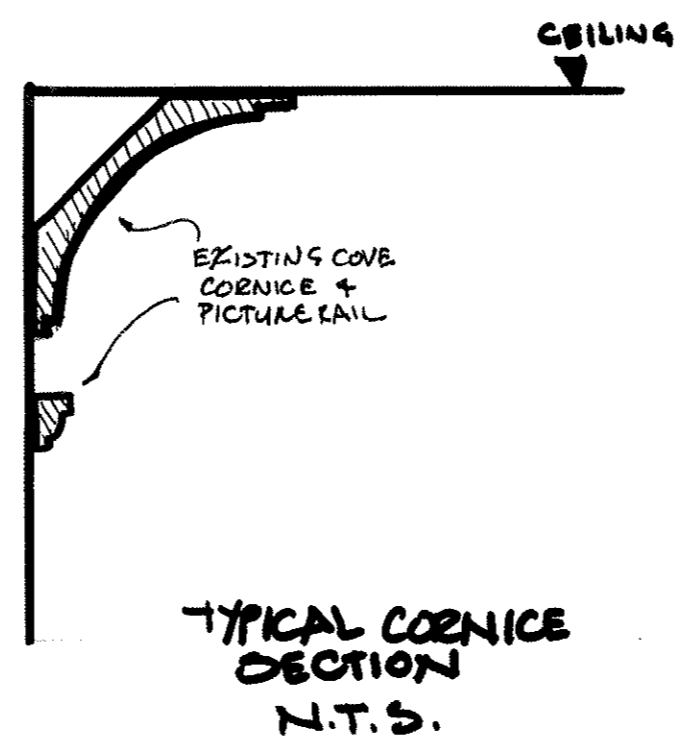
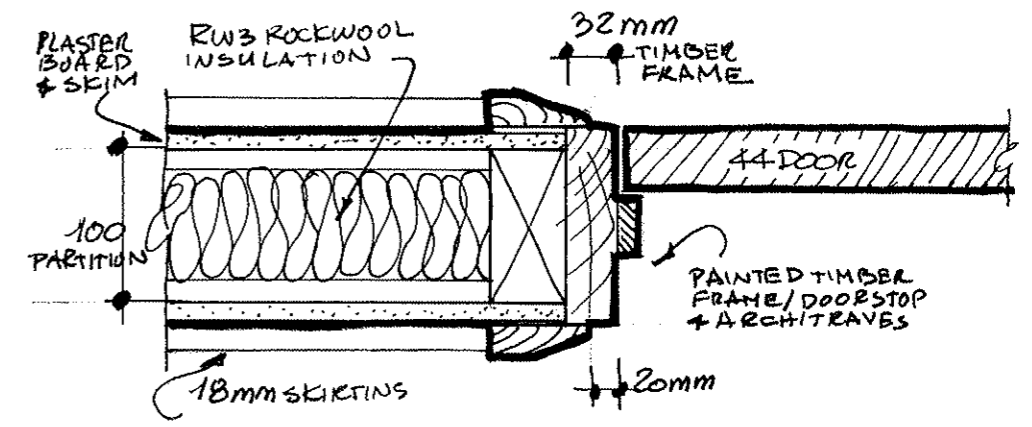


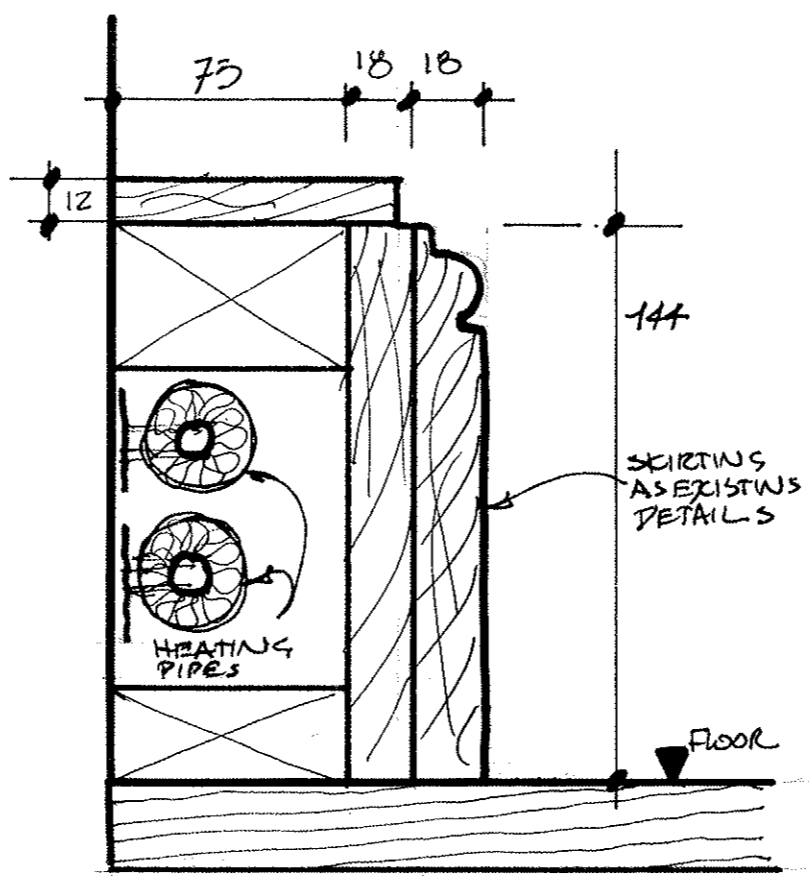
TYPICAL SECTION THROUGH LEVELLED UP FLOORING/ EXISTING TIMBER JOISTS
SCALE: 1:5 @ A3



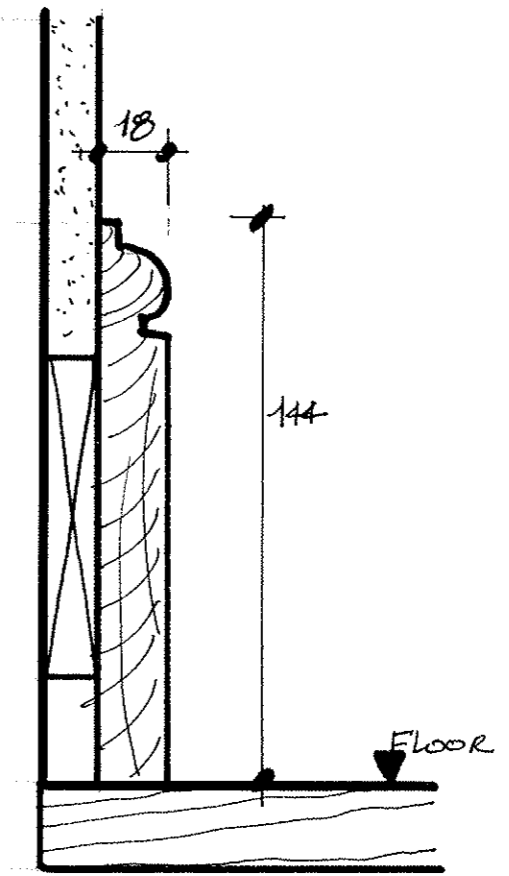
TYPICAL CORNICE SECTION
N.T.S.



PLAN THROUGH TYPICAL FRAME TO DOOR/TIMBER STUD.



PROPOSED SKIRTING PIPE DUCT
LIVING ROOM / BEDROOMS
FIRST & SECOND FLOOR FLATS (NORTH)



EXISTING SKIRTING
FIRST & SECOND FLOOR FLATS
(NORTH)

NO 12 GRAY'S INN SQUARE
FOR THE HONOURABLE SOCIETY OF GRAY'S INN
JOINERY DETAILS
FIRST AND SECOND FLOOR NORTH FLATS

GHK ARCHITECTS
Architects · Designers · Historic Building Specialists

530 Fulham Road, London SW6 5NR
Tel: +44 (0)20 7471 8000 mail@ghkarchitects.co.uk
www.ghkarchitects.co.uk

DRAWING NO; HK2191/SK032
SCALE : N.T.S, U.O. STATED
DATE ; 01 DEC 2015
DRAWN ; AM, LM.