

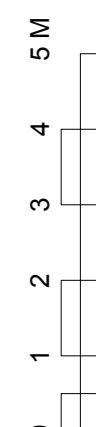
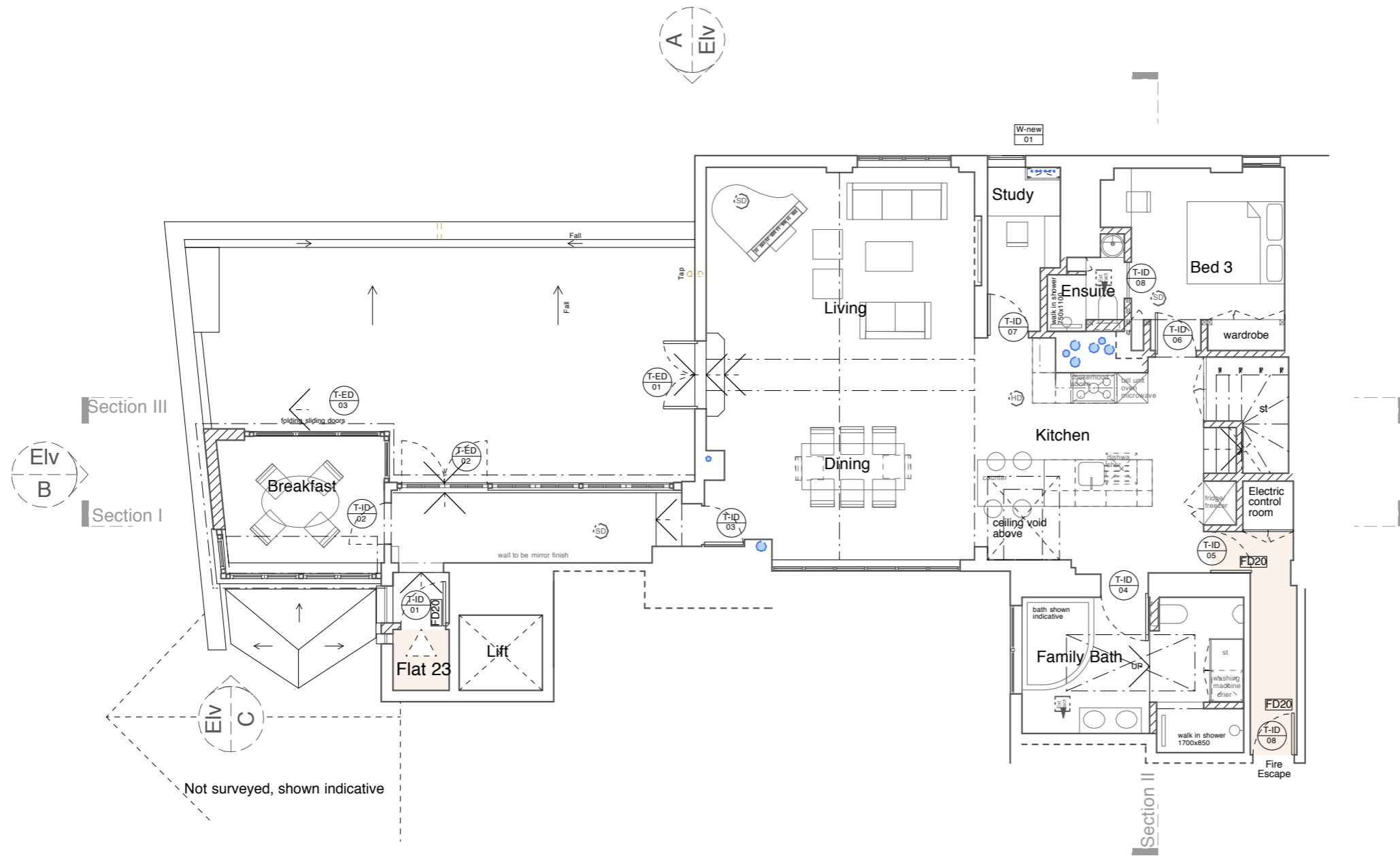
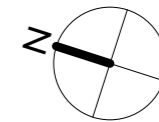
General Notes

All dimensions to be verified on site
 To be read in conjunction with all relevant documents
 In the event of discrepancy notify the Architect immediately
 This document is copyright of Hugh Cullum Architects Ltd

Issue Status
 SK Information F Feasibility D Design
 P Permissions S Scheme T Tender
 C Construction E Existing Condition

DRAWING KEY

- Existing construction
- Proposed construction




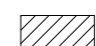
(_): Issued for Planning Application (17.02.16/MS)
 Revision: Information (date/drawn by)

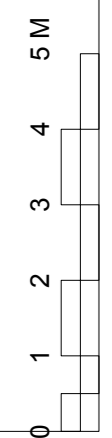
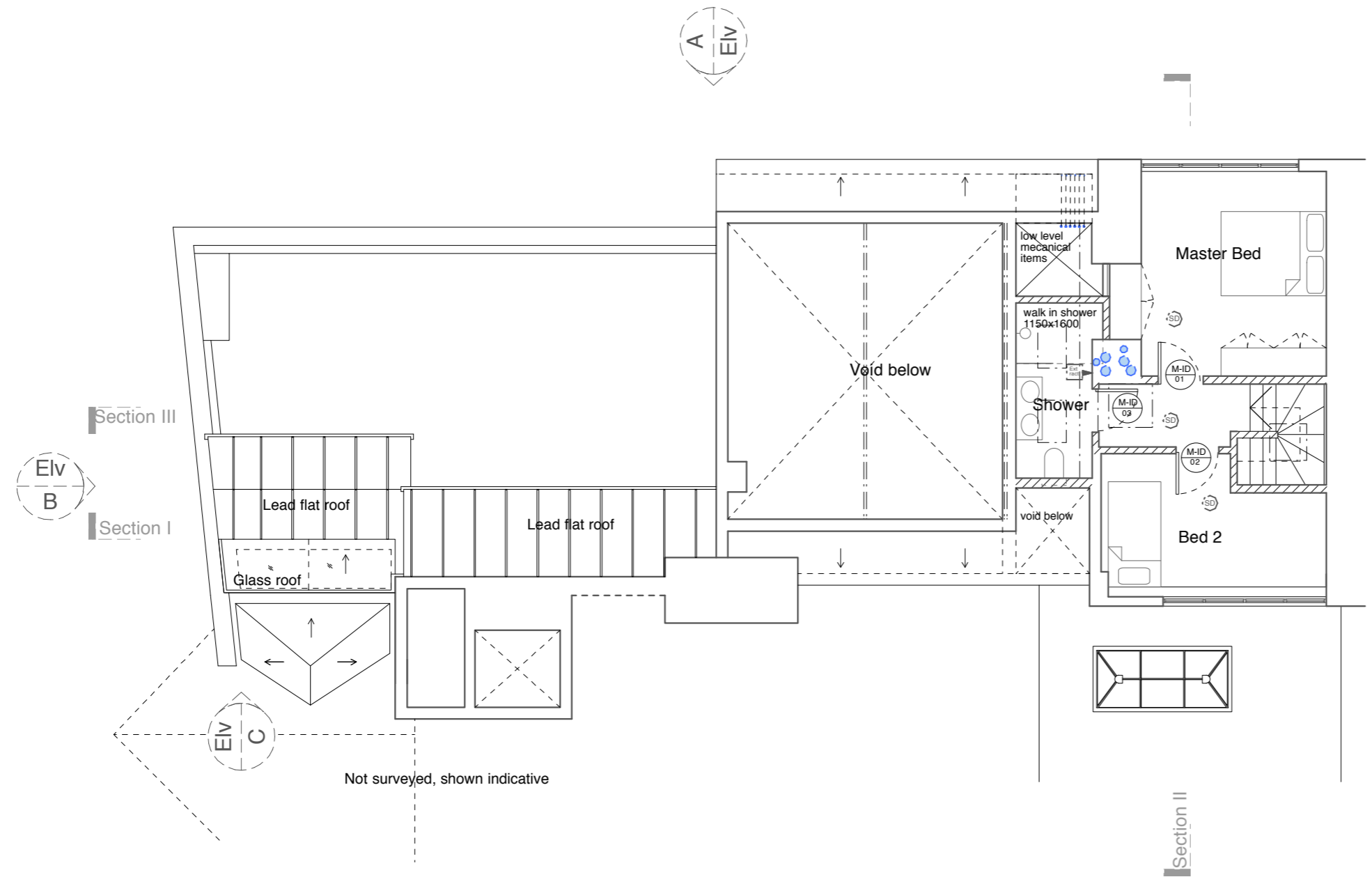
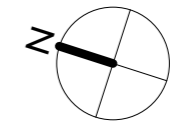
HUGH CULLUM ARCHITECTS LTD
 Bloomsbury Design
 61b Judd Street
 London WC1H 9QT
 t 020 7383 7647
 f 020 7387 7645
 mail@hughcullum.com

23 Three Cups Yard
 Proposed
 Flat 23 Floor Plan
 1:100@A3 February 2016
OSP23-P130(_)

General Notes
 All dimensions to be verified on site
 To be read in conjunction with all relevant documents
 In the event of discrepancy notify the Architect immediately
 This document is copyright of Hugh Cullum Architects Ltd

Issue Status
 SK Information F Feasibility D Design
 P Permissions S Scheme T Tender
 C Construction E Existing Condition

DRAWING KEY
 Existing construction
 Proposed construction



(.): Issued for Planning Application (17.02.16/MS)
 Revision: Information (date/drawn by)

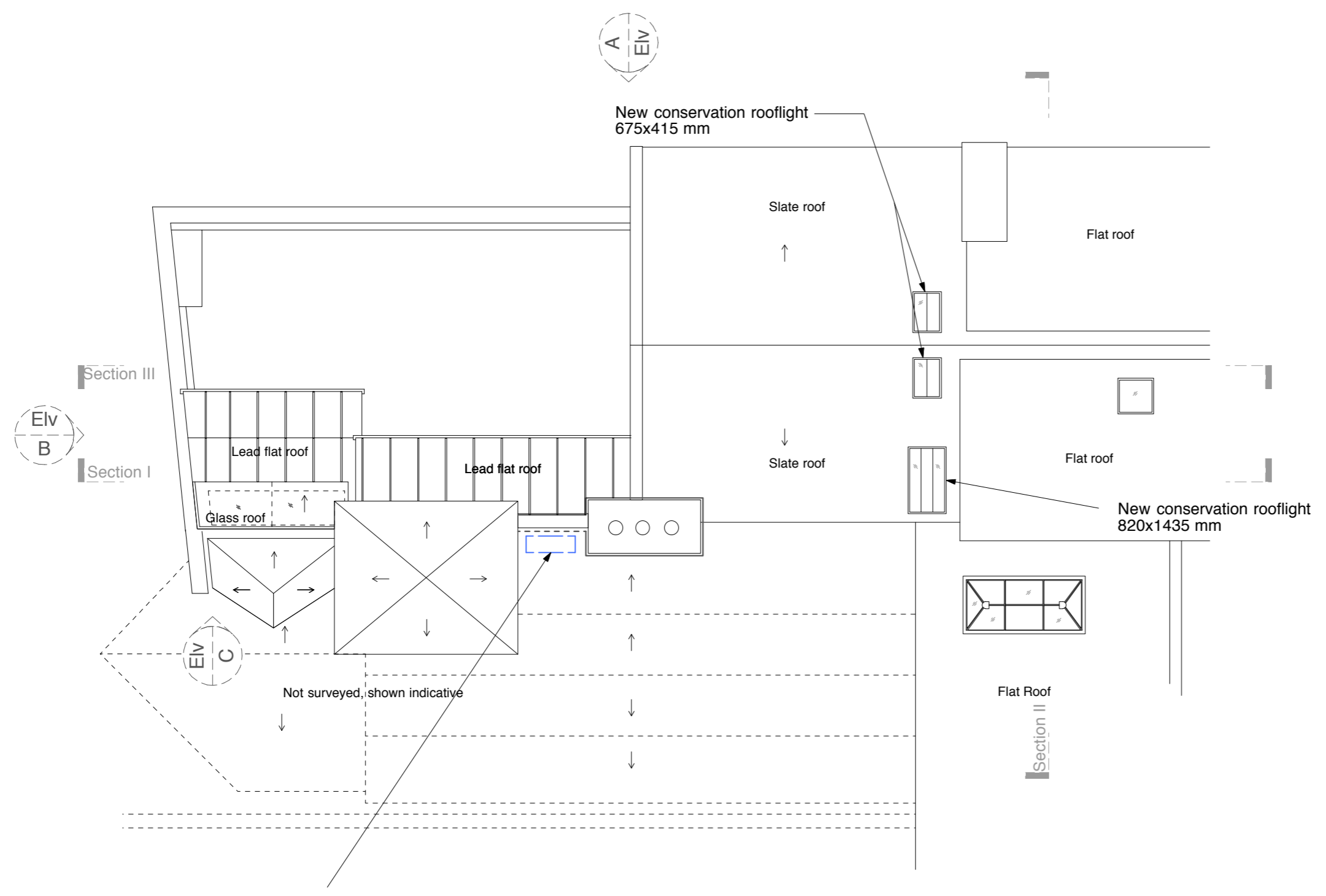
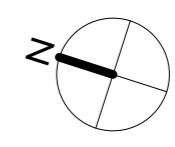
HUGH CULLUM ARCHITECTS LTD
 Bloomsbury Design
 61b Judd Street
 London WC1H 9QT
 t 020 7383 7647
 f 020 7387 7645
 mail@hughcullum.com

23 Three Cups Yard
 Proposed
 Flat 23 Mezzanine Plan
 1:100@A3 February 2016
OSP23-P131()

General Notes
 All dimensions to be verified on site
 To be read in conjunction with all relevant documents
 In the event of discrepancy notify the Architect immediately
 This document is copyright of Hugh Cullum Architects Ltd

Issue Status
 SK Information F Feasibility D Design
 P Permissions S Scheme T Tender
 C Construction E Existing Condition

DRAWING KEY
 [White box] Existing construction
 [Hatched box] Proposed construction



(.) Issued for Planning Application (17.02.16/MS)
 Revision: Information (date/drawn by)

HUGH CULLUM ARCHITECTS LTD
 Bloomsbury Design
 61b Judd Street
 London WC1H 9QT
 t 020 7383 7647
 f 020 7387 7645
 mail@hughcullum.com

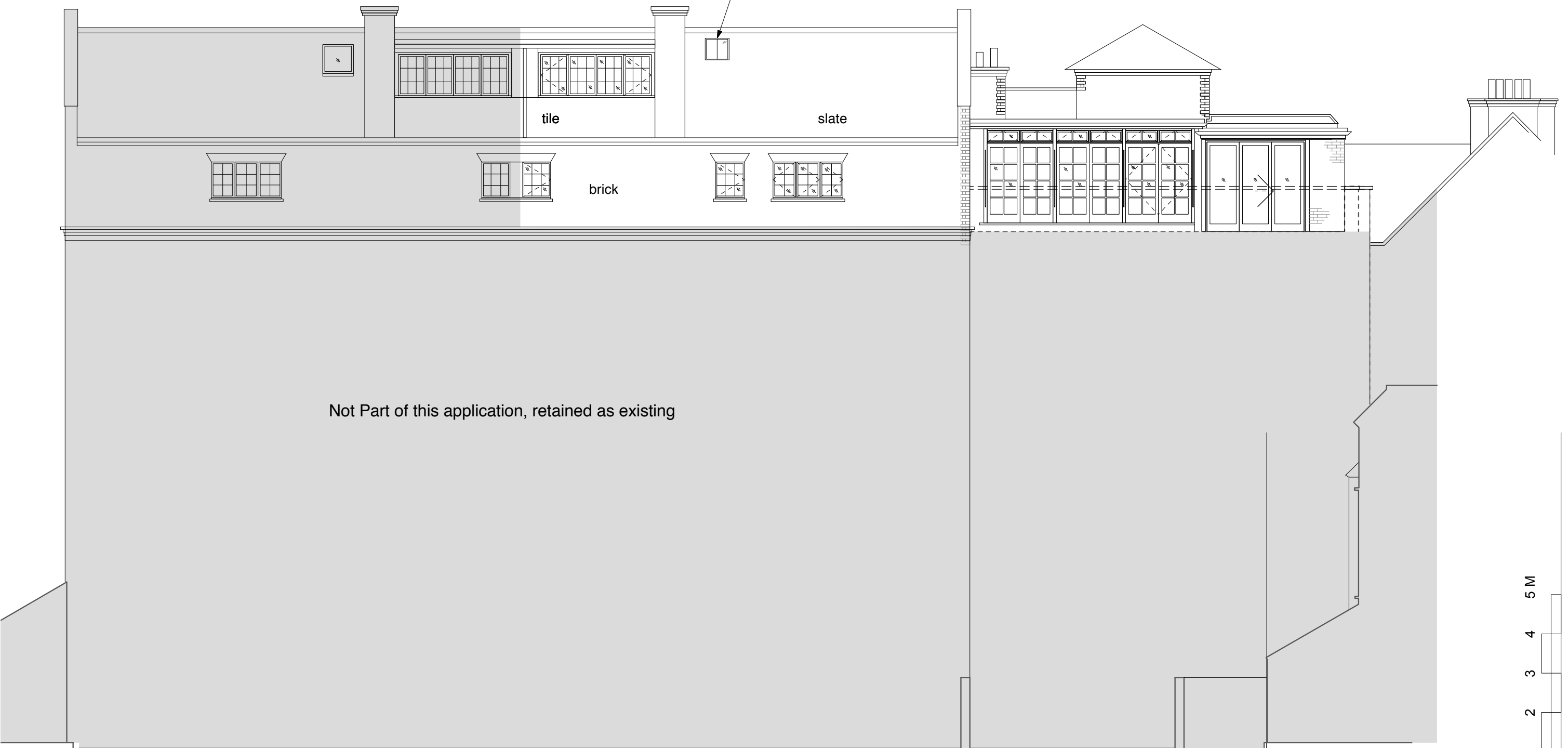
23 Three Cups Yard
 Proposed
 Flat 23 Roof Plan
 1:100@A3 February 2016
OSP23-P132(.)

Air conditioning condenser
 hidden within roof valley

General Notes
 Do not scale from this drawing
 All dimensions to be verified on site
 To be read in conjunction with all relevant documents
 In the event of discrepancy notify the Architect immediately
 This document is copyright of Hugh Cullum Architects Ltd

Issue Status
 SK Information F Feasibility D Design
 P Permissions S Scheme T Tender
 C Construction E Existing Condition

New conservation rooflight
 675x415 mm



Not Part of this application, retained as existing

5 M
 4
 3
 2
 1
 0

(_) : Issued for Planning Application (17.02.16/MS)
 Revision: Information (date/drawn by)

Elevation A



HUGH CULLUM ARCHITECTS LTD
 Bloomsbury Design
 61b Judd Street
 London WC1H 9QT
 t 020 7383 7647
 f 020 7387 7645
 mail@hughcullum.com

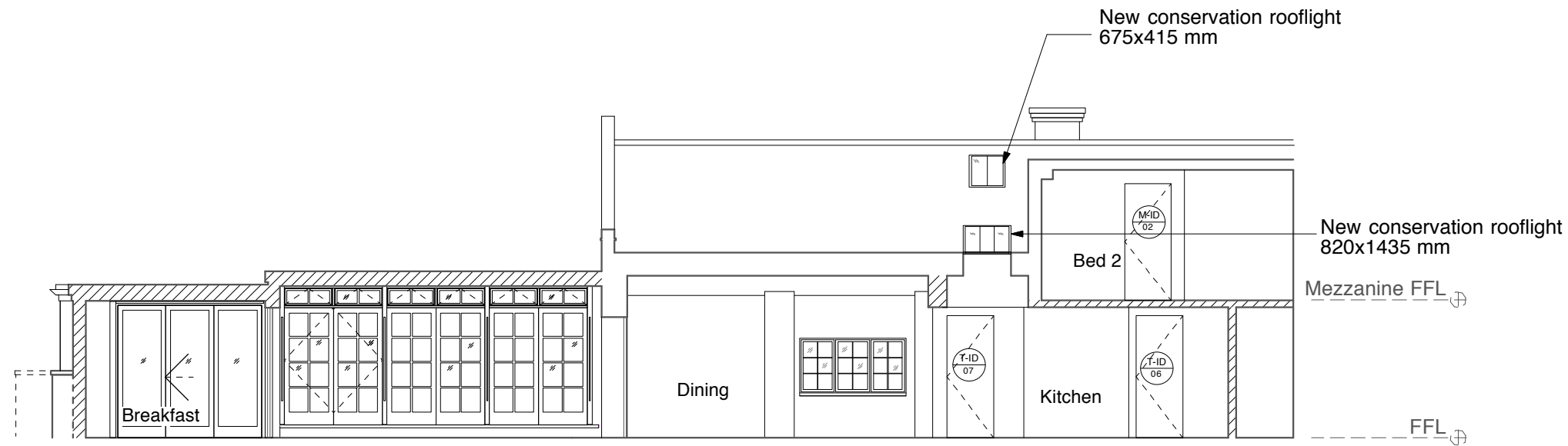
23 Three Cups Yard
 Proposed
 Flat 23 Elevation A
 1:100@A3 February 2016
OSP23-P133(_)

General Notes
 Do not scale from this drawing
 All dimensions to be verified on site
 To be read in conjunction with all relevant documents
 In the event of discrepancy notify the Architect immediately
 This document is copyright of Hugh Cullum Architects Ltd

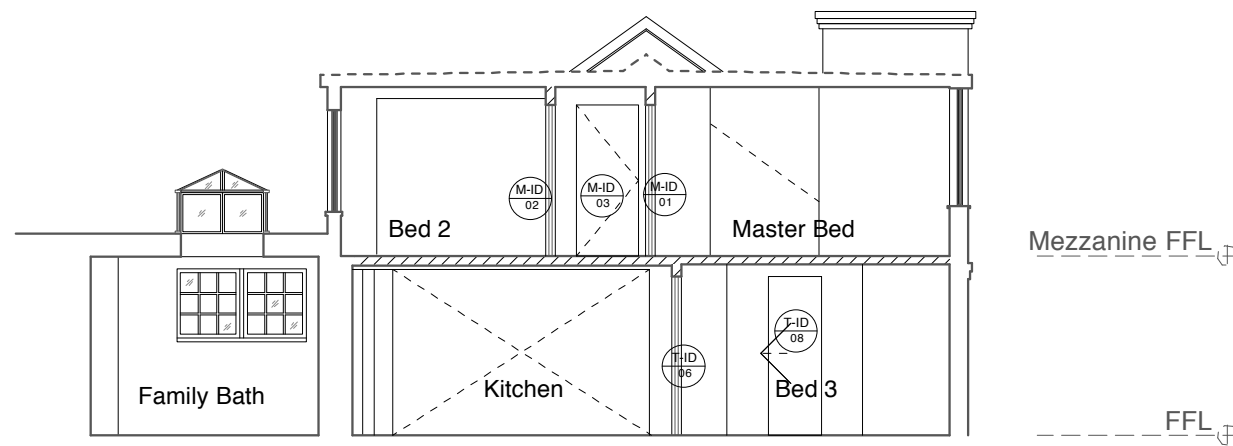
Issue Status
 SK Information F Feasibility D Design
 P Permissions S Scheme T Tender
 C Construction E Existing Condition

DRAWING KEY

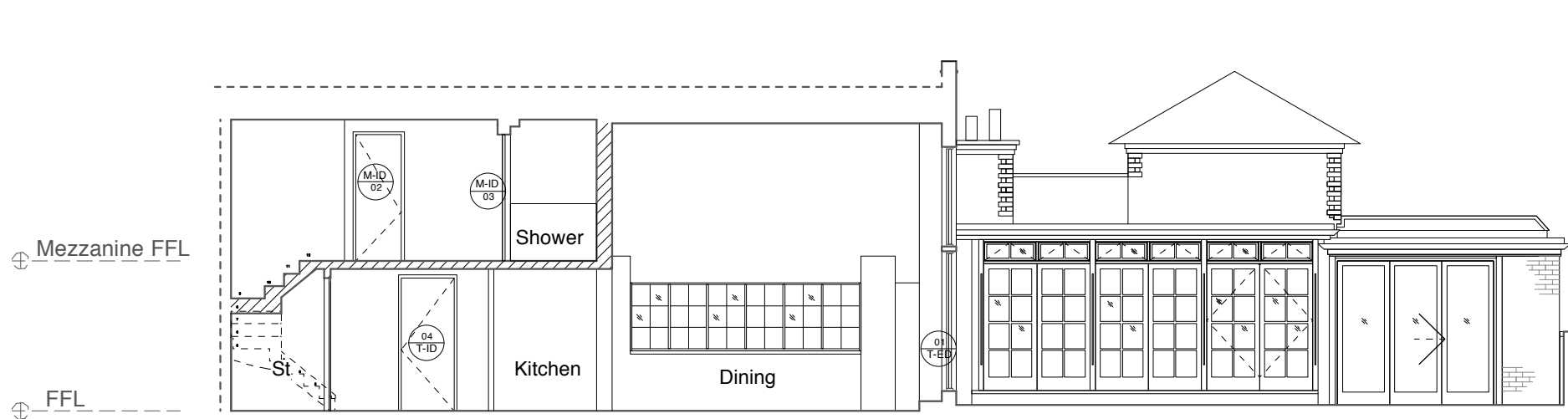
-  Existing construction
-  Proposed construction



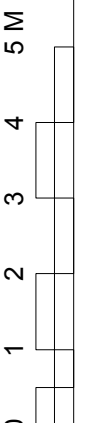
Section I



Section II



Section III



(.): Issued for Planning Application (17.02.16/MS)
 Revision: Information (date/drawn by)

HUGH CULLUM ARCHITECTS LTD
 Bloomsbury Design
 61b Judd Street
 London WC1H 9QT
 t 020 7383 7647
 f 020 7387 7645
 mail@hughcullum.com

23 Three Cups Yard
 Proposed
 Flat 23 Section I, II & III
 1:100@A3 February 2016
OSP23-P134()