

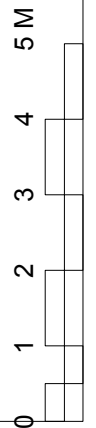
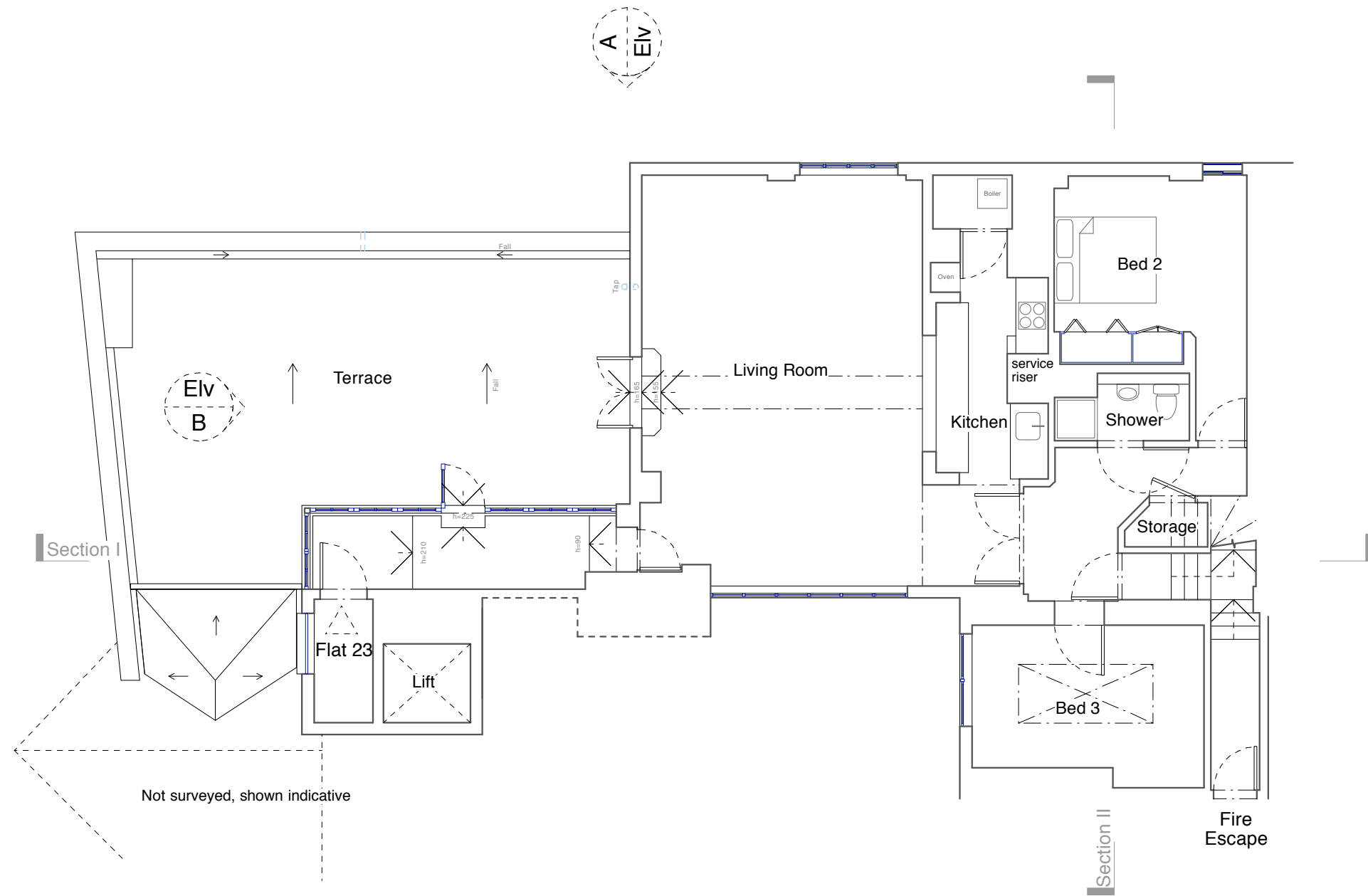
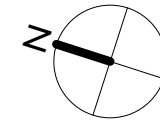


General Notes  
 Do not scale from this drawing  
 All dimensions to be verified on site  
 To be read in conjunction with all relevant documents  
 In the event of discrepancy notify the Architect immediately  
 This document is copyright of Hugh Cullum Architects Ltd

Issue Status  
 SK Information F Feasibility D Design  
 P Permissions S Scheme T Tender  
 C Construction E Existing Condition

**DRAWING KEY**

-  Existing construction
-  Demolition





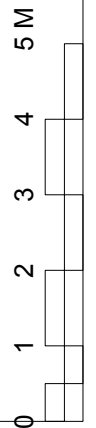
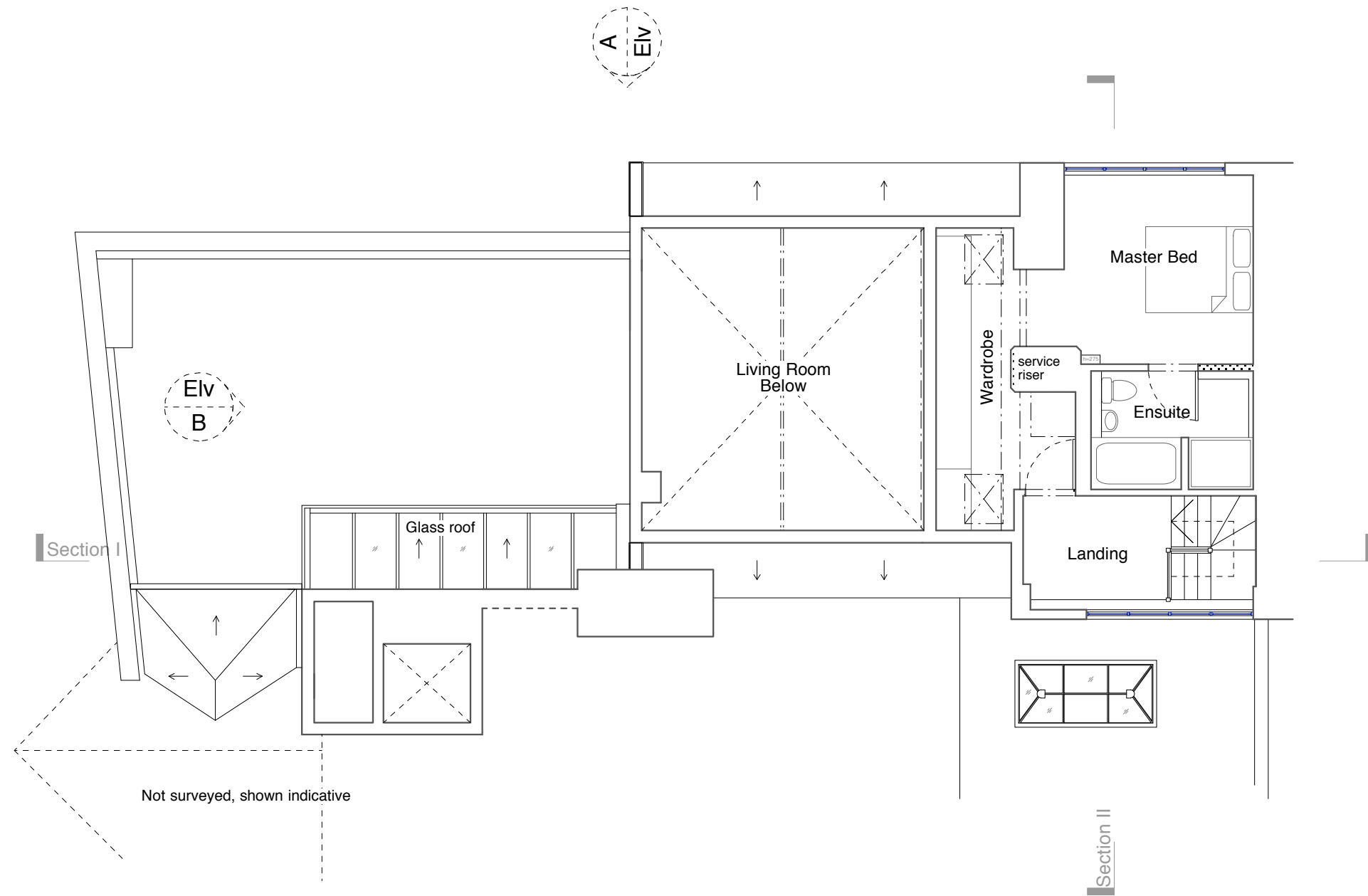
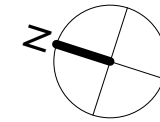
(.): Issued for Freeholder Permission (17.02.16/MS)  
 Revision: Information (date/drawn by)

General Notes  
 Do not scale from this drawing  
 All dimensions to be verified on site  
 To be read in conjunction with all relevant documents  
 In the event of discrepancy notify the Architect immediately  
 This document is copyright of Hugh Cullum Architects Ltd

Issue Status  
 SK Information F Feasibility D Design  
 P Permissions S Scheme T Tender  
 C Construction E Existing Condition

**DRAWING KEY**

-  Existing construction
-  Demolition





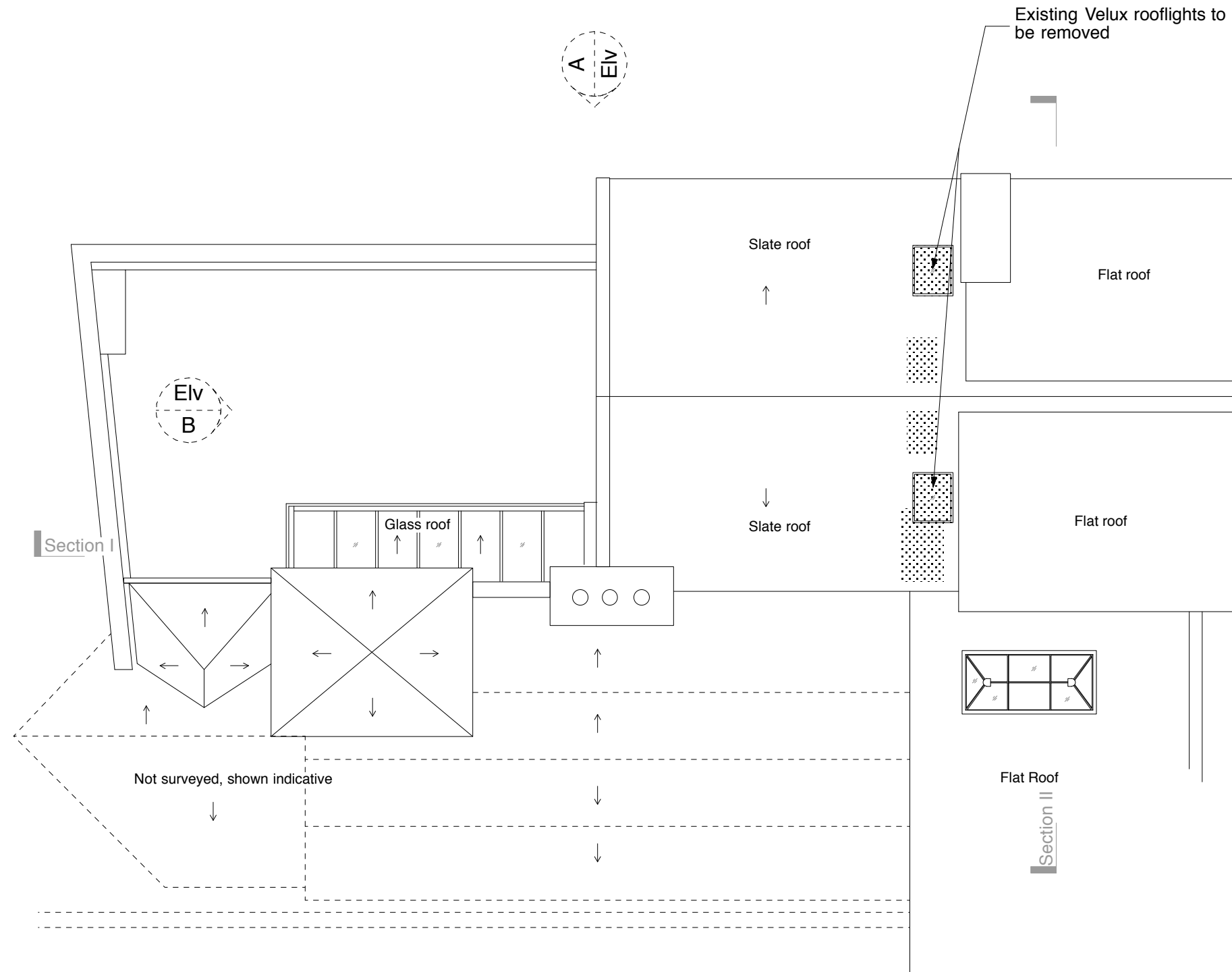
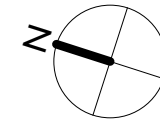
(.): Issued for Freeholder Permission (17.02.16/MS)  
 Revision: Information (date/drawn by)

General Notes  
 Do not scale from this drawing  
 All dimensions to be verified on site  
 To be read in conjunction with all relevant documents  
 In the event of discrepancy notify the Architect immediately  
 This document is copyright of Hugh Cullum Architects Ltd

Issue Status  
 SK Information F Feasibility D Design  
 P Permissions S Scheme T Tender  
 C Construction E Existing Condition

**DRAWING KEY**

-  Existing construction
-  Demolition



Revision: Information (date/drawn by)

**General Notes**  
 Do not scale from this drawing  
 All dimensions to be verified on site  
 To be read in conjunction with all relevant documents  
 In the event of discrepancy notify the Architect immediately  
 This document is copyright of Hugh Cullum Architects Ltd

**Issue Status**  
 SK Information F Feasibility D Design  
 P Permissions S Scheme T Tender  
 C Construction E Existing Condition

**DRAWING KEY**

- Existing construction
- Demolition

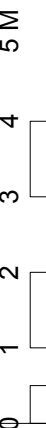
Existing Velux rooflight to be removed

tile

slate

brick

Not Part of this application, retained as existing



(\_): Issued for Freeholder Permission (17.02.16/MS)  
 Revision: Information (date/drawn by)

Elevation A

**HUGH CULLUM ARCHITECTS LTD**  
 Bloomsbury Design  
 61b Judd Street  
 London WC1H 9QT  
 t 020 7383 7647  
 f 020 7387 7645  
 mail@hughcullum.com

**23 Three Cups Yard**  
 Permission: Existing Conditions  
 Flat 23 Elevation A  
 1:100@A3 February 2016  
**OSP23-P113(\_)**





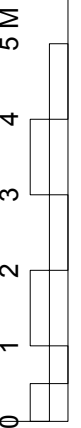
Elevation B

General Notes  
 Do not scale from this drawing  
 All dimensions to be verified on site  
 To be read in conjunction with all relevant documents  
 In the event of discrepancy notify the Architect immediately  
 This document is copyright of Hugh Cullum Architects Ltd

Issue Status  
 SK Information F Feasibility D Design  
 P Permissions S Scheme T Tender  
 C Construction E Existing Condition

**DRAWING KEY**

-  Existing construction
-  Demolition





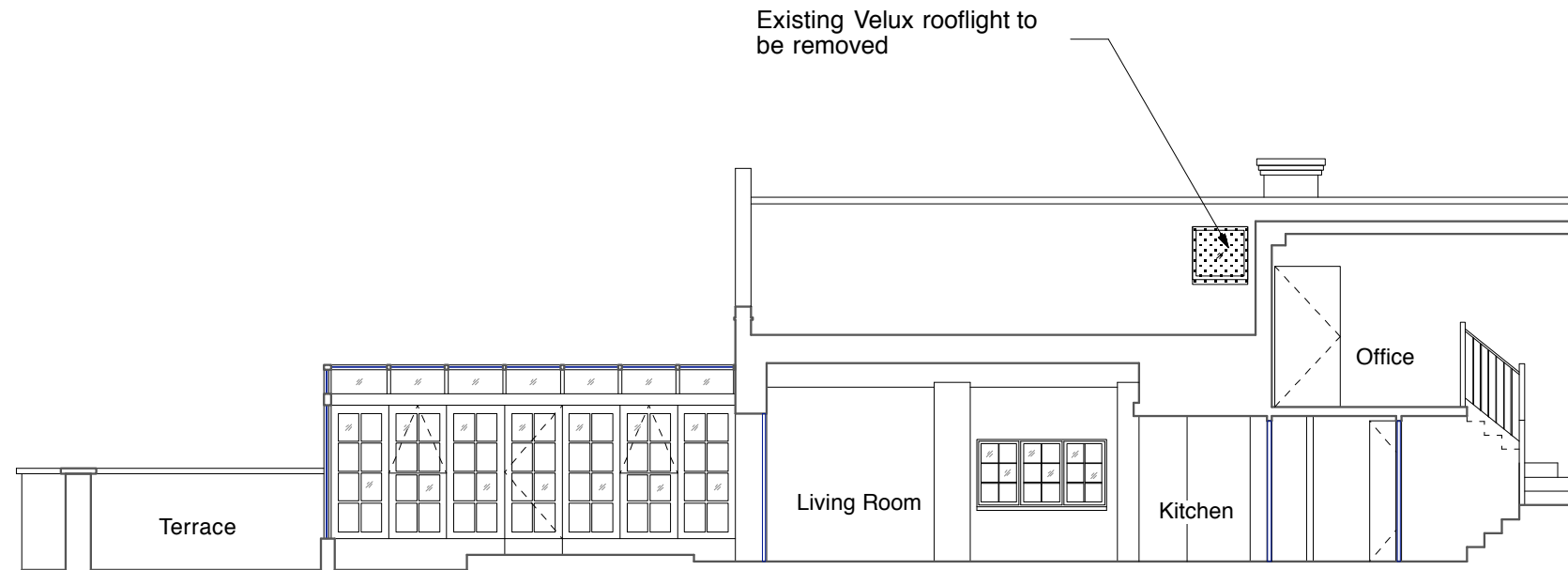
(\_) : Issued for Freeholder Permission (17.02.16/MS)  
 Revision: Information (date/drawn by)

General Notes  
 Do not scale from this drawing  
 All dimensions to be verified on site  
 To be read in conjunction with all relevant documents  
 In the event of discrepancy notify the Architect immediately  
 This document is copyright of Hugh Cullum Architects Ltd

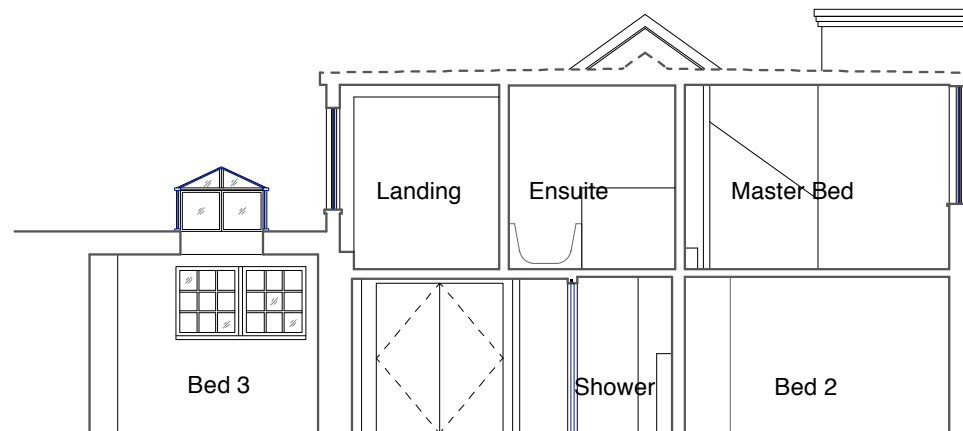
Issue Status  
 SK Information F Feasibility D Design  
 P Permissions S Scheme T Tender  
 C Construction E Existing Condition

**DRAWING KEY**

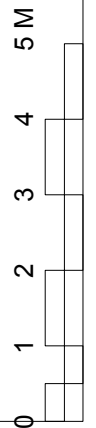
-  Existing construction
-  Demolition



Section I



Section II



(\_) : Issued for Freeholder Permission (17.02.16/MS)  
 Revision: Information (date/drawn by)