

## Airborne Dust Control



### *Air Cube:*

*This self-contained dust cleaner is intended for cleaning air in a working area without the need for an exhaust hose, or for use at the same time as a negative / positive pressure unit.*

*Dust filtration units with intake ducts and hoods can be used for localised dust capture. The units are mobile and easily transportable.*



- Identify and assess dust producing activities that cannot be contained or suppressed
- Source and use room filtering equipment such as a dust cube
- Establish a maintenance and cleaning regime for equipment and filters

**KEY  
POINTS**

## Concrete / Masonry Cutting



*This hard wearing dust extractor attaches to most cutting saws. The bag system allows for large amounts of cutting without constant stopping to empty.*

*It is ideal for use internally and externally*



*This unit attaches to the water suppression pipe on the grinder, it allows water to be pumped at a constant steady pace, allowing the spray to be supplied controlling the dust.*

- Source industrial rated suppression systems
- Brief operatives on their use and maintenance
- Ensure Blue Hat Supervisors are focused on correct use, maintenance and checks
- Use FFP3 dust masks and check face fit tests are current

**KEY  
POINTS**



## Concrete / Masonry Cutting

Cut off saws fitted with pressurised water bottles, a fine spray is all that's needed to suppress dust from this equipment



Chaser fitted to an industrial vacuum for use internally. Note the industrial 'M' or 'H' class ratings which are effective enough to retain high toxicity dusts.



- Source industrial vacuums with a minimum of an 'M' class unit. Note: this rating refers to the unit NOT the filter.
- Ensure equipment particularly spray nozzles and pumps are cleaned and maintained

KEY POINTS

## Joinery



*Battery power drill with self contained powered vacuum. Versatile and lightweight, the vacuum attachment adds almost no weight .*



*Orbital sander with battery powered industrial vacuum bag attachment.*

- The user is not the only person at risk. Consider others in the area who may be exposed to dust – this type of equipment aids in ensuring collective protection
- Ensure users are undertaking a maintenance and cleaning regime in accordance with manufactures instructions

KEY  
POINTS



## Demolition / Breaking Out



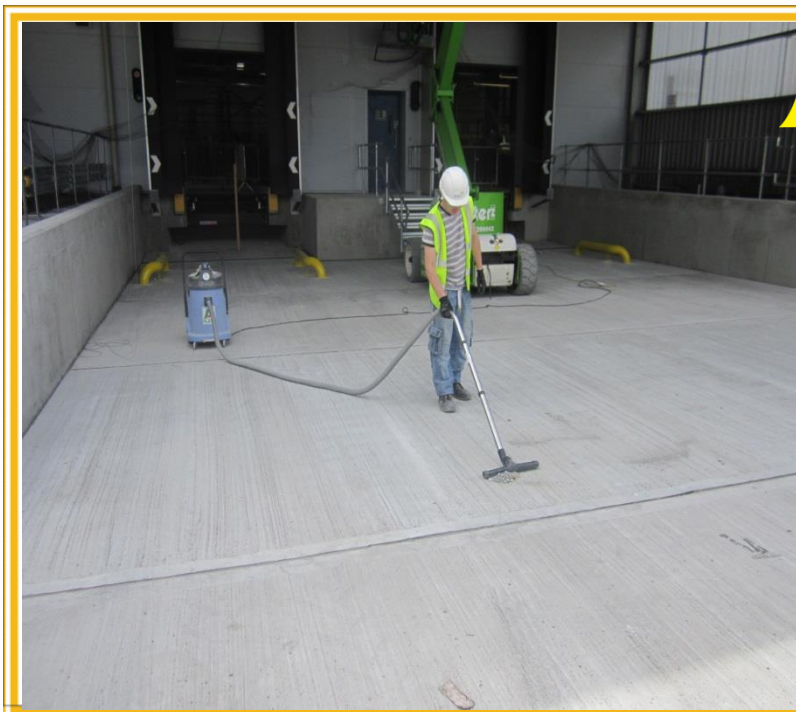
*Standard hydraulic breaker fitted with a chisel cowl which directly attaches to a industrial vacuum .*



- Dust reducing attachments for various pieces of equipment are becoming more widely available - discuss this with contractors at Plan Right.
- If in doubt contact suppliers or manufacturers directly and they will help you regarding tool attachments / accessories.

**KEY  
POINTS**

## General site dust



Careful handling and proper storage of the vacuums will prolong the life of the unit



Domestic vacuums are not adequate for construction dusts



Many industrial vacuums can be sourced for both wet and dry cleaning. 'M' (medium) and 'H' (high) class units provide effective and reliable extraction for higher toxicity dusts with self-cleaning systems and low flow indicators.

- Use industrial vacuums with a minimum of an 'M' class extraction unit. Note: the 'M' rating refers to the unit NOT the filter.
- Users should use and maintain the vacuum in accordance with manufacturers instructions.

KEY POINTS



## Segregation of dusty activities



✓

*These enclosures can be set up to segregate cutting activities from the rest of the work area. Fitted with an extraction unit to remove dust from the enclosure, they are also soundproof. (Rentavent)*

- The enclosures must be correctly assembled with no gaps and must be used in conjunction with dust control equipment.
- Those operating in the enclosure must wear an FFP3 dust mask with a current face fit test.

KEY  
POINTS

## Controlling general site dust



These 'backpack' style water bottles provide a suppression solution allowing the user to dampen down dust with a manually controlled spray pump, whilst on the move.

Ideal for general site operatives and labourers



- Users must wear an FFP3 dust mask with a current face fit test. Masks should be maintained and stored correctly.
- \*\* Note: Uvex provide a free face fit service for us. Please email Nigel at [n.day@uvex.co.uk](mailto:n.day@uvex.co.uk) for further information.\*\*

KEY POINTS



## Segregating dusty works



*Flexiscreen temporary screens and hoardings provide a dust-tight seal to screen processes and work areas. Ideal for live environments providing minimal disruption to the public and occupiers of buildings.*

*Easily relocated and removed as works progress.*



- Regular inspections should be carried out to ensure the material remains undamaged, providing full protection

**KEY POINTS**

## Planning for dusty activities

### Dust Management: occupational lung disease



Dust can lead to breathing complications and in some cases death. In many cases treatment options are limited and the damage is irreversible.

#### LUNG DISEASE SYMPTOMS

- ▶ Shortness of breath
- ▶ Chronic cough
- ▶ Sputum production

#### AS EXPOSURE PROGRESSES

- ▶ Extreme shortness of breath
- ▶ Respiratory failure
- ▶ Occupational asthma
- ▶ Chronic obstructive pulmonary disease
- ▶ Sarcoidosis
- ▶ Inflammation of the lungs

#### AT-RISK OCCUPATIONS

- ▶ Construction
- ▶ Plastering
- ▶ Sandblasting
- ▶ Carpentry - MDF and hardwood dusts
- ▶ Masonry
- ▶ Demolition
- ▶ Wall Chasing
- ▶ Plumbing
- ▶ Painting

Inhaling the dust can cause scar tissue in the lungs that reduces the lungs' ability to extract oxygen from the air.

Dust particles can embed themselves in the alveolar sacs deep in the lungs where they cannot be cleared by mucus or coughing.



Trades who may currently be exposed to dust on this project are:

Trade	Contractor Name

All operatives working for these trades have undergone face fit testing and certificates are held in the site office. Those operatives currently on site are:

Operative Name	Contractor Name	Operative Name	Contractor Name



A document similar to this this can be used and displayed on site to help teams manage and control dusty activities

Above all, it's about people



- Appoint a person to be responsible for updating this
  - Refer to this during inductions and Start Rights briefings
- Display in prominent areas, i.e canteen, offices , site noticeboards etc.



## Monitoring dusty site activities

Demonstrates our commitment to CCS



Devices monitoring dust (& noise) can be used to determine personal and site wide exposure levels ensuring control measures are effective.

Easily relocated and removed as works progress.

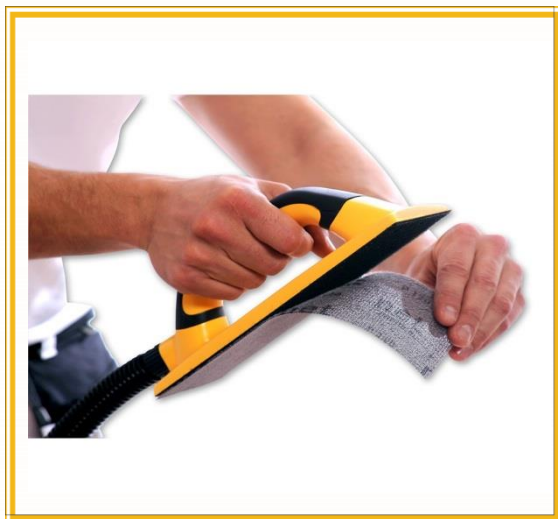
Boundary monitoring can also ensure compliance with a section 61



- Position these in high-risk activity areas
- Appoint a person to monitor the equipment for any changes
- Clean and maintain the equipment to ensure it operates effectively.

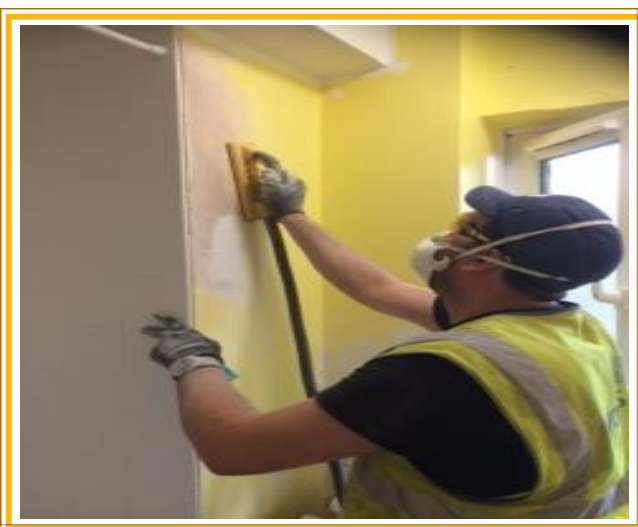
KEY POINTS

## Internal finishes



The sanding block connects to industrial vacuums and replaceable velcro sanding sheets attach to the underside of the sanding block

✓  
Ideal for preparing internal walls prior to painting



- Users must wear an FFP3 dust mask with a current face fit test. Masks should be maintained and stored correctly.
- Vacuums filters should be cleaned and changed regularly

KEY  
POINTS



## Respiratory Protective Equipment



✓

Maintaining RPE

- Regularly Look for signs of damage
- Replace disposable masks as per manufacturers recommendations
- Change filter in non disposable masks as per manufacturers instructions

RPE must be:

- the right specification (FFP3 / P3)
- Fit the wearer (facefit testing required)
- Worn correctly (users should be clean shaven for an effective fit)



- RPE is a last resort and should be used along side other control at source measures
- Masks should be maintained and stored correctly.
- \*\* Note: Uvex provide a free face fit service for us. Please email Nigel at [n.day@uvex.co.uk](mailto:n.day@uvex.co.uk) for further information.\*\*

