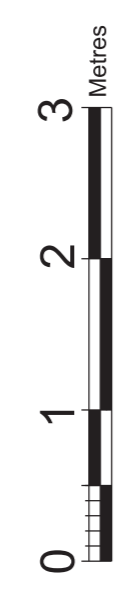
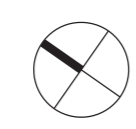


Notes

- All dimensions to be checked on site
- Do not scale off this drawing
- All dimensions are shown in mm unless otherwise stated
- Refer to drawing issue sheet for purpose of issue
- If in doubt ask
- © Lewvelyn Davies

Key plan



P1 PLANNING APPLICATION	15-01-19	ZL
No. Description	Date	By
Revisions		

Structural Consultant: ARUP
 Services Consultant: ARUP
 Project Manager: Equals
 Cost Consultant: Equals
 Project Title: Arthur Stanley House

Client: University College of London Hospitals Charity (UCLHC)

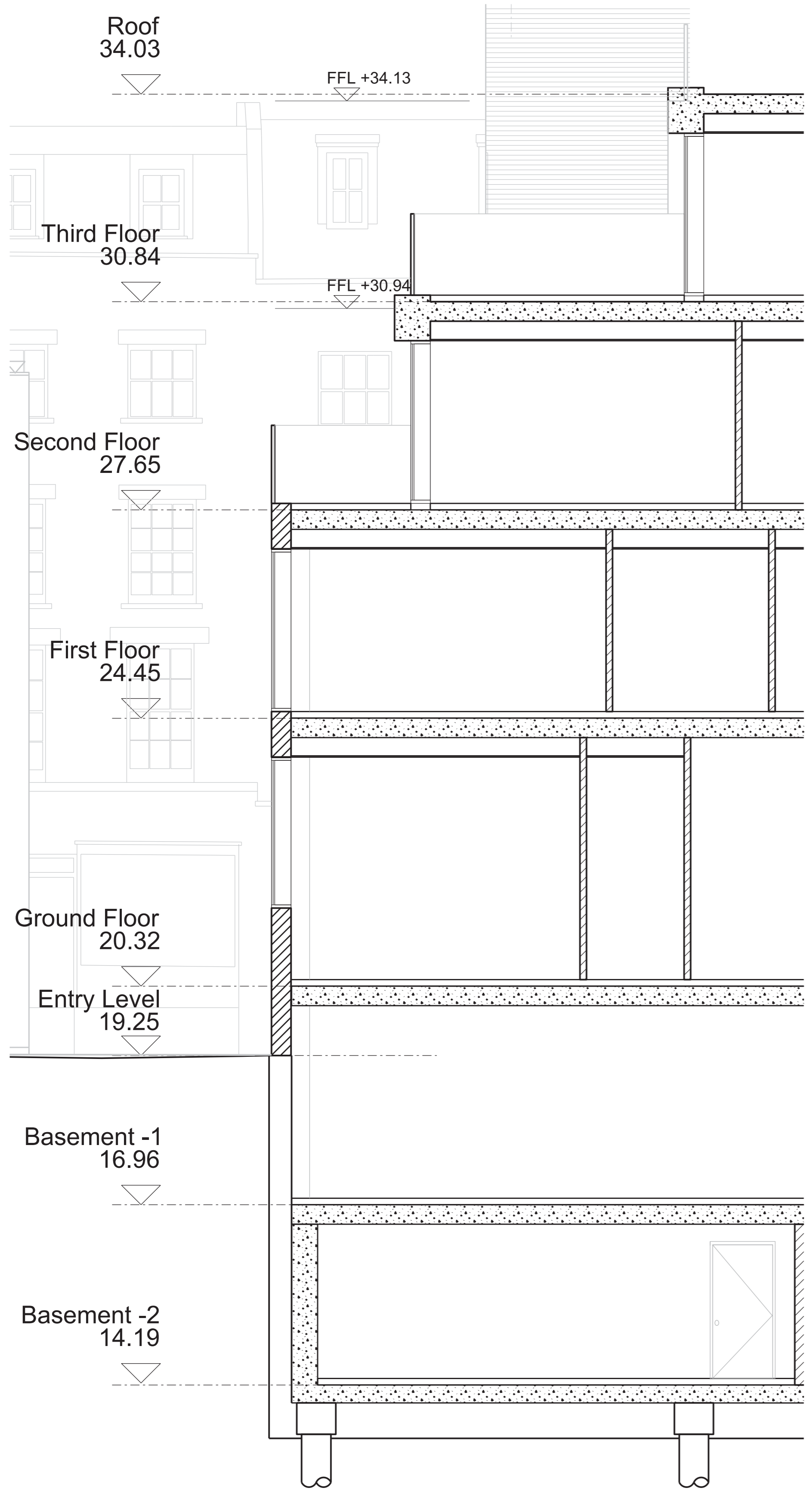
Drawing Title: Facade Detail 01
 Section / elevation study

Project Number: LD13 002.00 - DET_F_02
 Drawing Number: DET_F_02
 Revision: P1

Scale @ A1: 1:50
 Date: 15-01-05
 Architects: LEWVELYN DAVIES

LEWVELYN DAVIES

3rd floor: 1, 3-5 Rathbone Place, London, E1W 1HU
 T: +44(0)20 7507 7900 | E: london@lewvelyn.com
 www.lewvelyn.com



Section

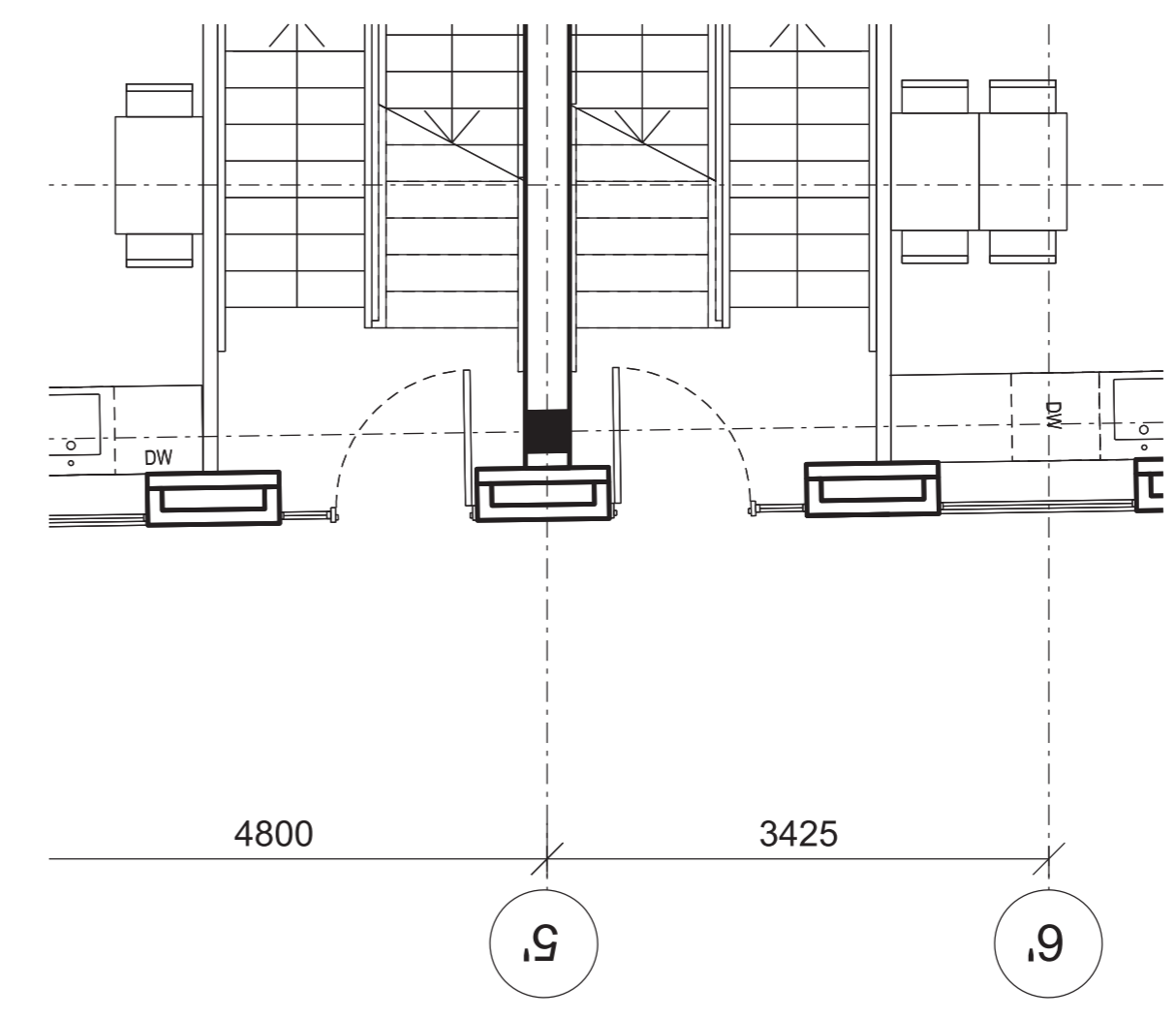


Glass Balustrade

Grey Brick

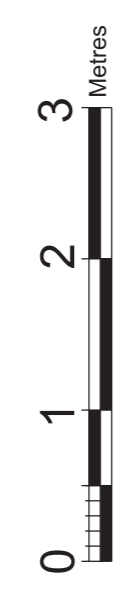
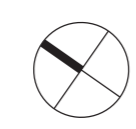
Double Glazed Window

East Elevation Study



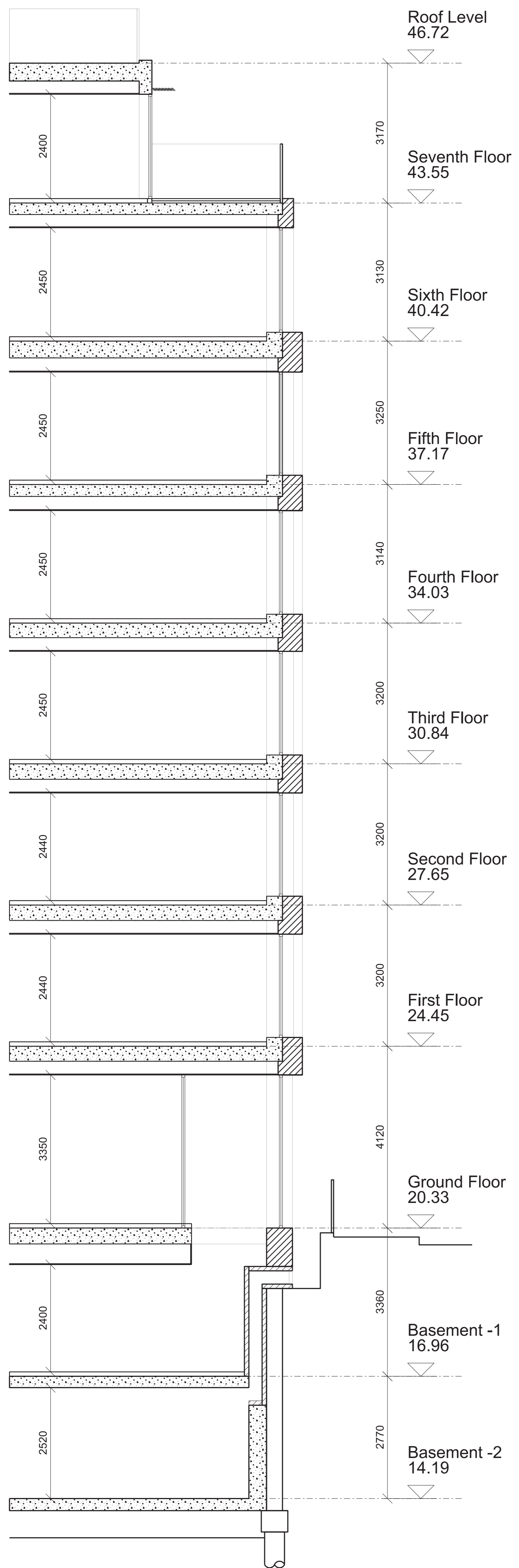
Plan at Level 00

Notes
 - All dimensions to be checked on site
 - Do not scale off this drawing
 - All dimensions are shown in mm unless otherwise stated
 - Refer to drawing issue sheet for purpose of issue
 - If in doubt ask
 - © Lewellyn Davies
 Key plan



P1 PLANNING APPLICATION 15-01-19 ZL By
 No. Description Date
 Revisions
 Structural Consultant Services Consultant
 URS ARUP
 Project Manager Cost Consultant
 Equals Consulting
 Project Title
 Arthur Stanley House

Client
 University College of London
 Hospitals Charity (UCLHC)
 Drawing Title
 Facade Detail 01
 Section / elevation study
 Project Number Drawing Number Revision
 LD13 002.00 - DET_F_01 P1
 Scale @ A1
 1:50
 Date
 15-01-05
 Architects
 LEWELLYN DAVIES
 3rd floor, 1, 3-5 Rathbone Place, London, E1W 1HU
 T +44(0)20 7907 7900 | E london@lewellyndavies.com
 www.lewellyndavies.com

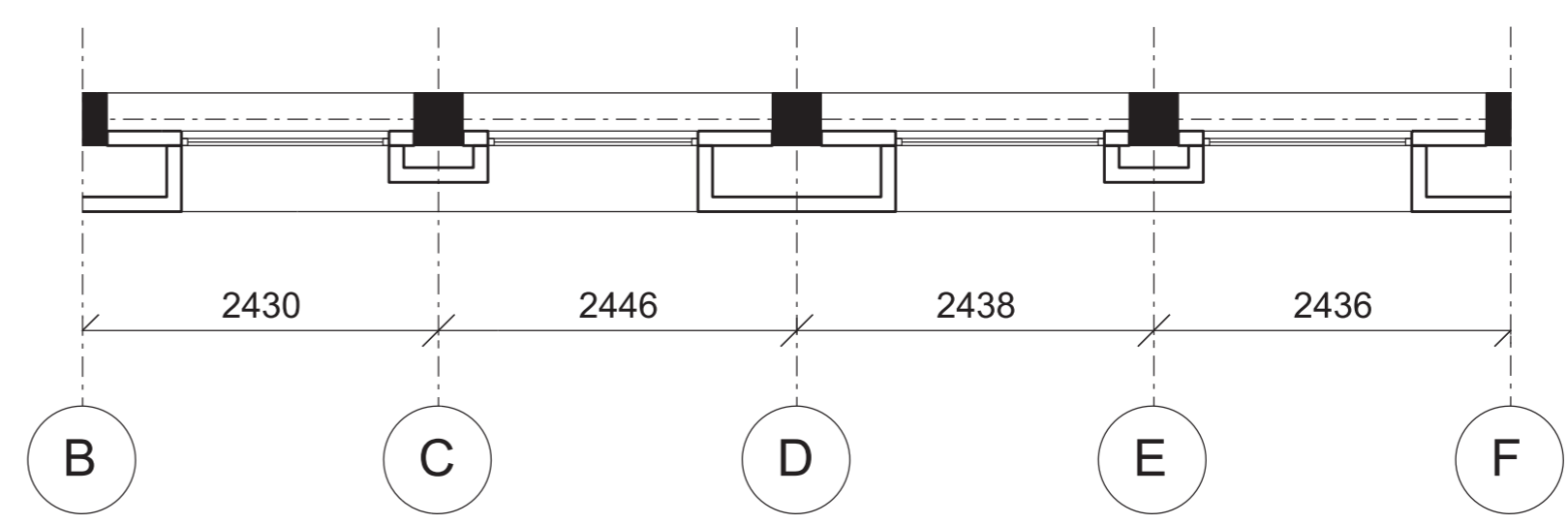


Section DD



Zinc Cladding
 Glass Balustrade
 Grey Brick
 Brown Brick
 Double Glazed Window

South Elevation Bay Study



Plan at Level 03