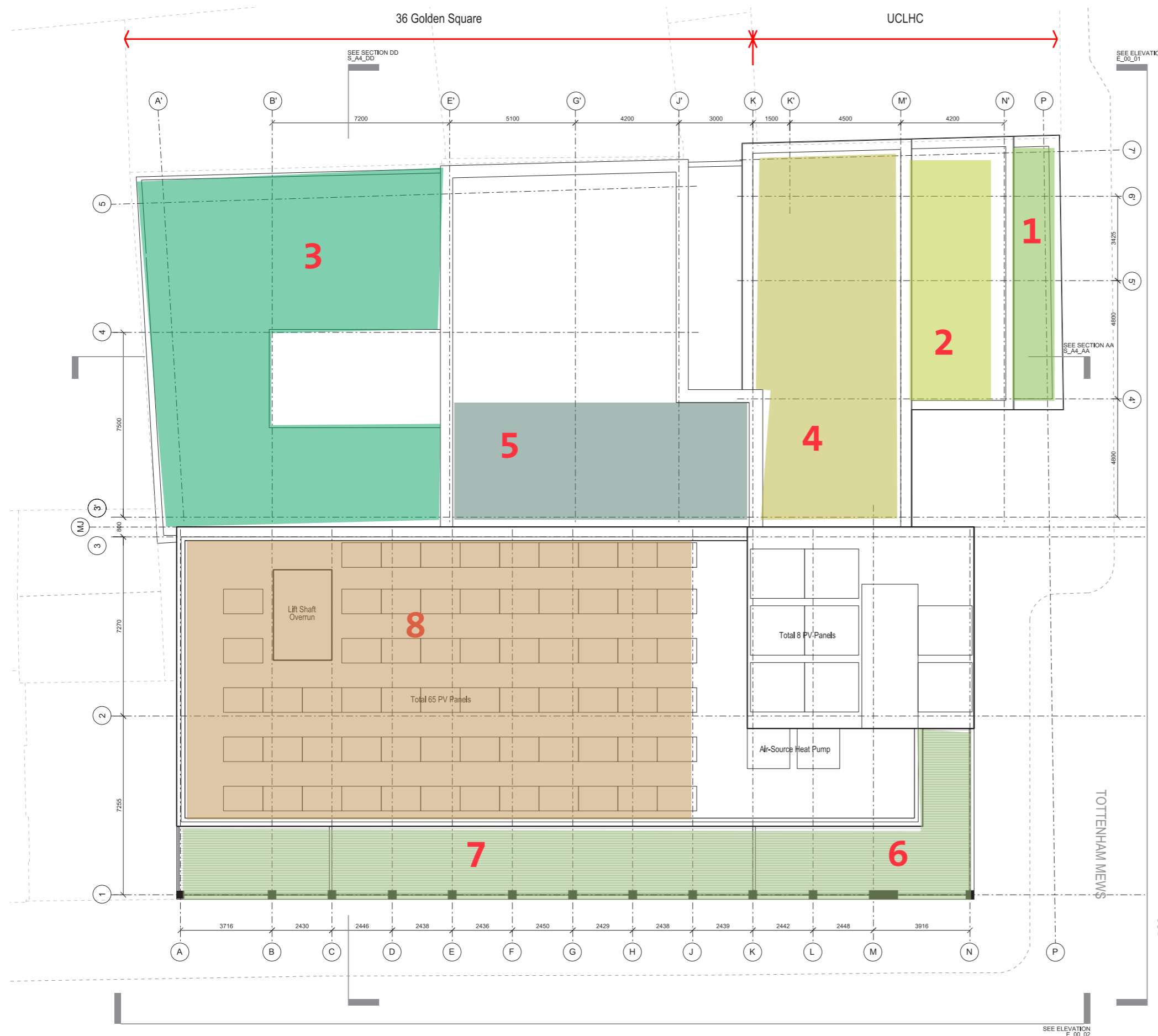


8.0 Landscape



8.0 Landscape

8.1 Introduction

Arthur Stanley House at present has no landscape or ecological features of merit.

8.2 Landscape context

It is proposed to create private amenity space for the office workers on level 2.

Residential amenity space will be provided with balconies and terraces. A communal roof garden for the residents will be provided on level 05. On the upper roof level a large private terrace will be provided for office use and residential penthouse use. On the highest roof level a green and brown roof will be provided underneath the solar panels for ecological biodiversity.

8.3 Landscape design principles

- 1. Private residential terrace area
Opportunity for container planting
- 2. Private residential terrace area
Opportunity for container planting
- 3. Office private amenity space garden
Ecological planting, lawn & seating
- 4. Private amenity space for residential use.
Planting with children play area
- 5. Plant area incorporating brown roof and seating area
- 6 & 7. Private office / residential terrace
Container planting
- 8 PV array
Brown and green roof

Llewelyn Davies
3rd floor
3 - 5 Rathbone Place
London
W1T 1HJ

T 020 7907 7900
London@ldavies.com
www.ldavies.com