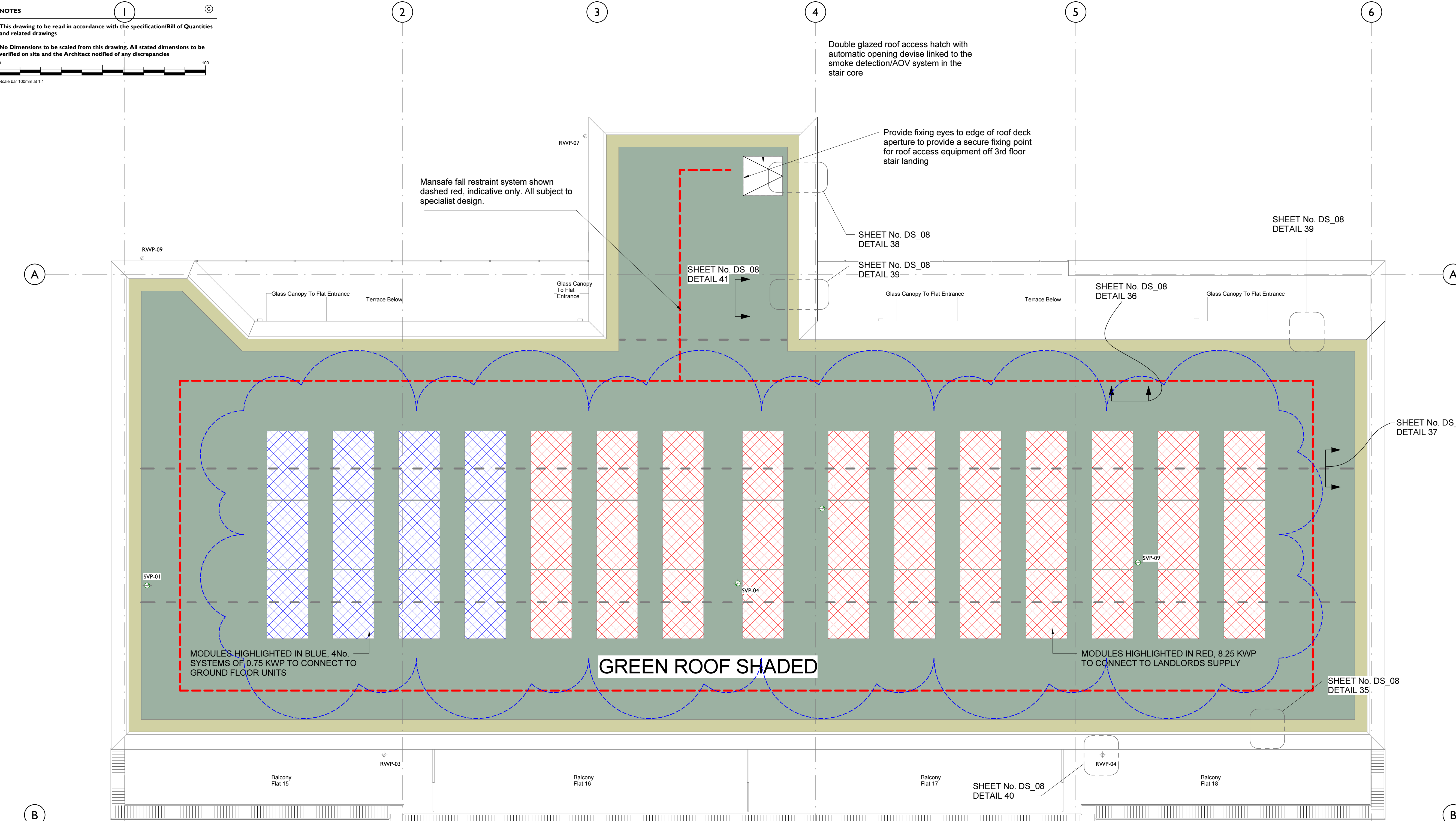


NOTES

This drawing to be read in accordance with the specification/Bill of Materials and related drawings

No Dimensions to be scaled from this drawing. All stated dimensions to be verified on site and the Architect notified of any discrepancies

Scale bar 100mm at 1:1



KEY

--- INDICATES POSITION OF STEEL BEAM BELOW

MODULES HIGHLIGHTED IN BLUE, 4No. SYSTEMS OF 0.75 KWP TO CONNECT TO GROUND FLOOR UNITS

GREEN ROOF SHADED

MODULES HIGHLIGHTED IN RED, 8.25 KWP TO CONNECT TO LANDLORDS SUPPLY

CONSTRUCTION ISSUE

CONSTRUCTION ISSUE



Project

Allcroft Road, Camden, London
London, Camden, Allcroft Road

Title

Roof Layout

Scale 1:50 @A1 Date 07/03/14

Drawn SP Checked KS

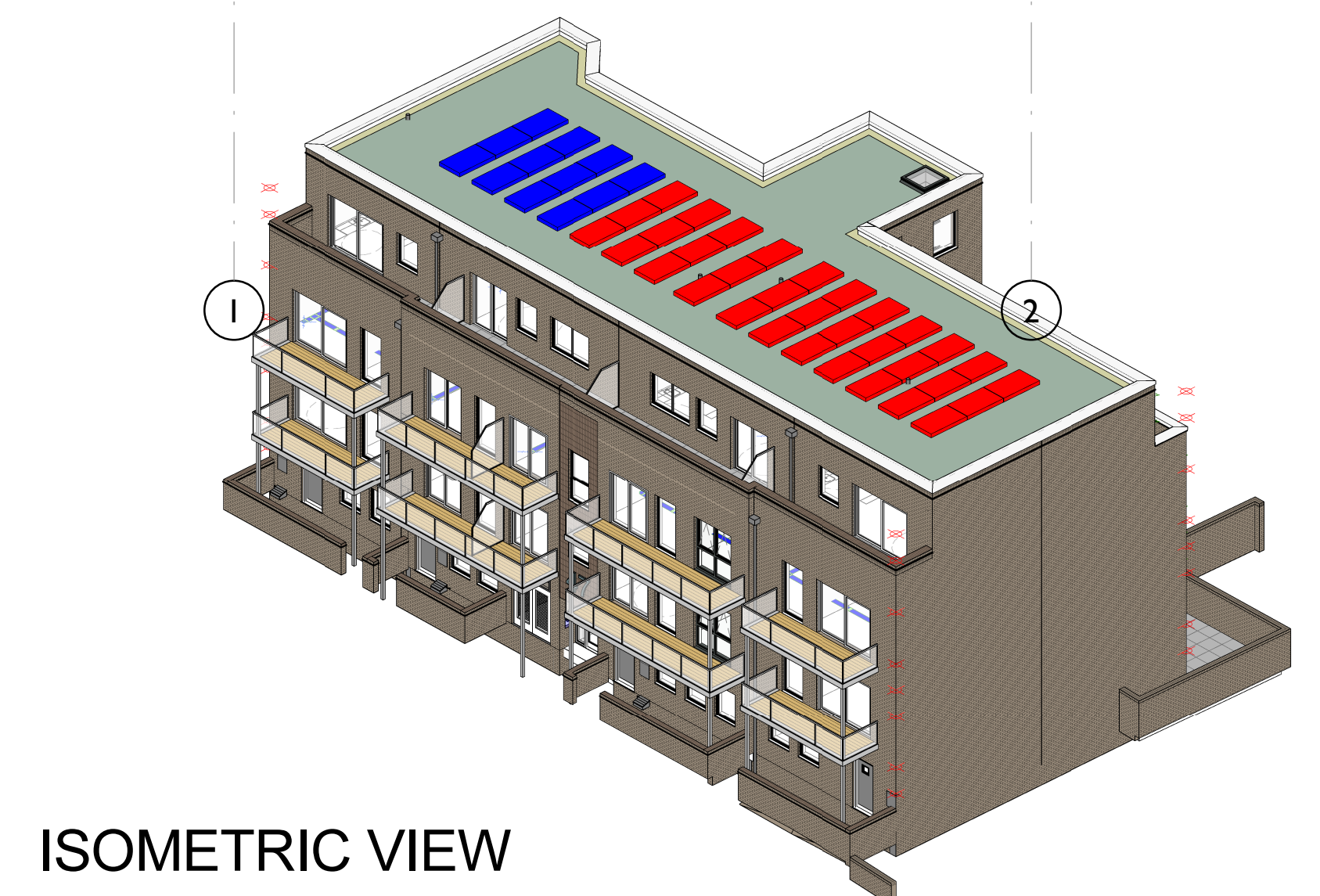
Drawing Number 7261_GA_ROOF Revision H

Saunders Partnership Architects
Studio Four
37 Broadwater Road
Welwyn Garden City
Hertfordshire, AL7 3AX

T 01707 385300
F 0870 6222135
www.saunderspartnership.com
offices at Welwyn Garden City | Bristol | Manchester

H	07/04/15	PV array re-configured	DKH
C	12/02/15	General Update	AMA
F	04/02/15	PV added to plan, Steel Beam positions indicated on drawing.	KFS
E	17/11/14	General update to suit design development	KS
D	14/10/14	General update to layout.	KS
C	15/09/14	Mansafe fall safe location amended.	AMA
B	05/08/14	Minor updates, issued for construction	KS
A	01/08/14	Roof layout amended to show SVP's, RWPs & AOV access.	AMA
Rev	Date	Note	IN

ROOF PLAN scale 1:50



ISOMETRIC VIEW