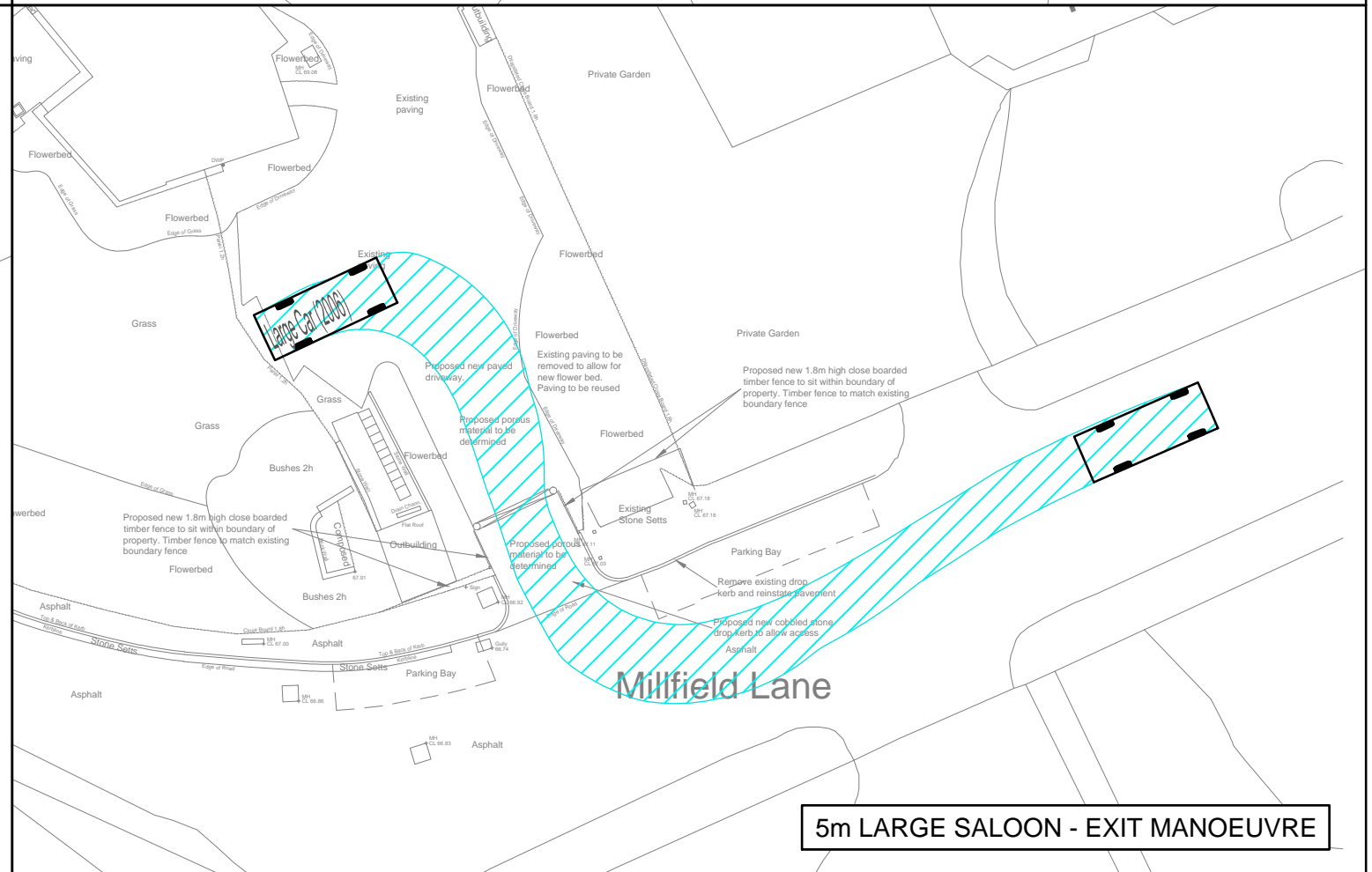
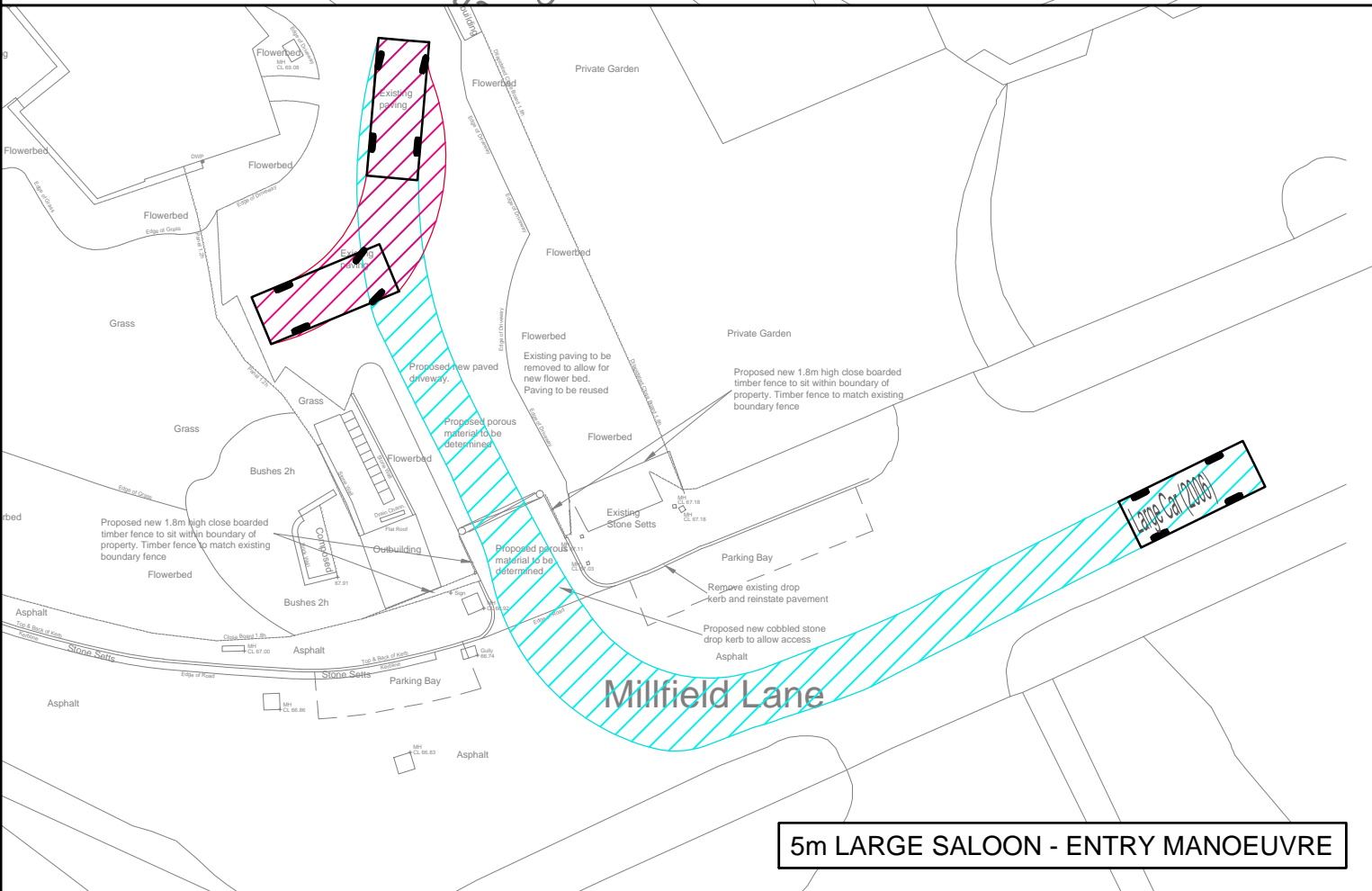
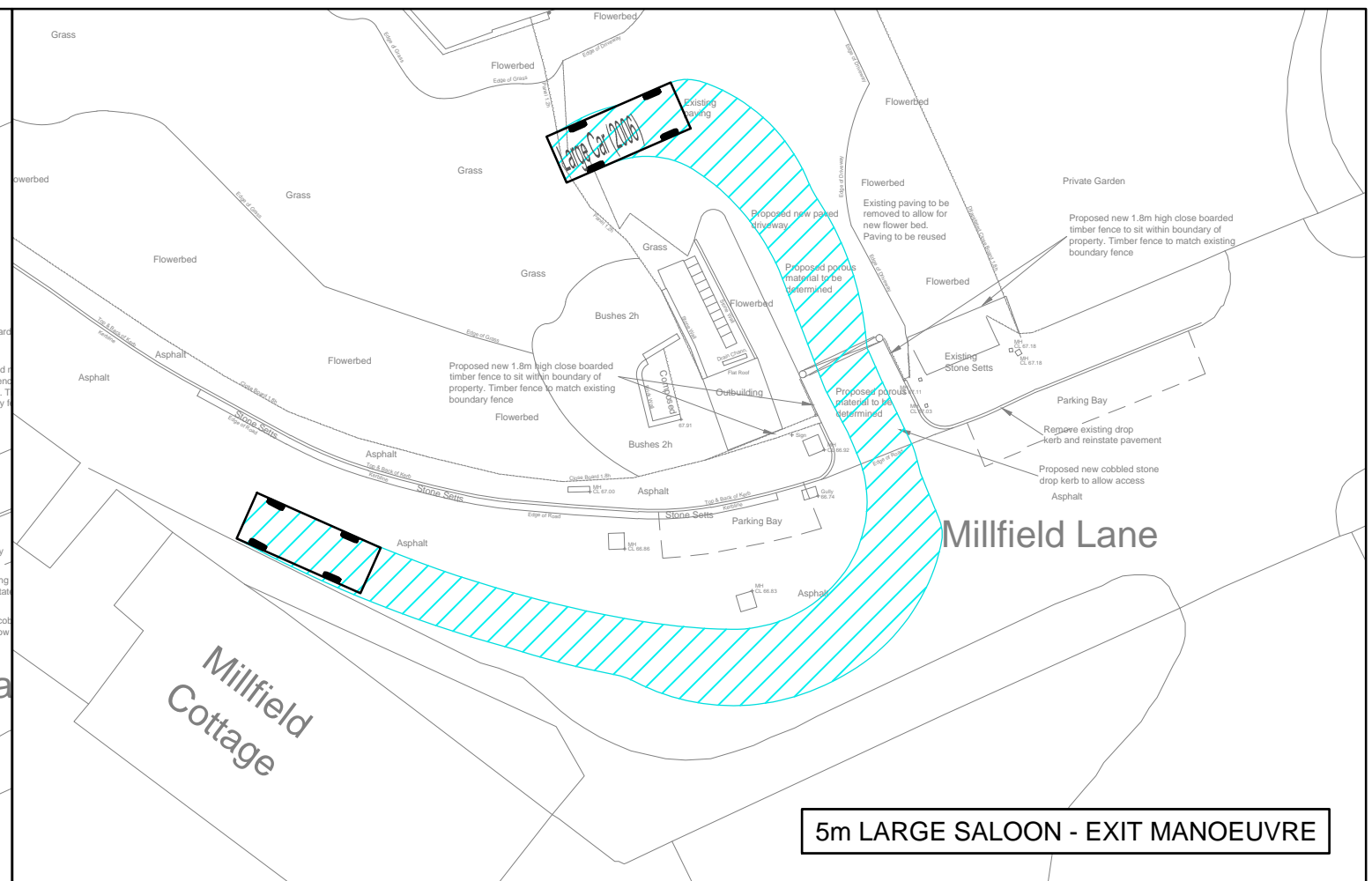
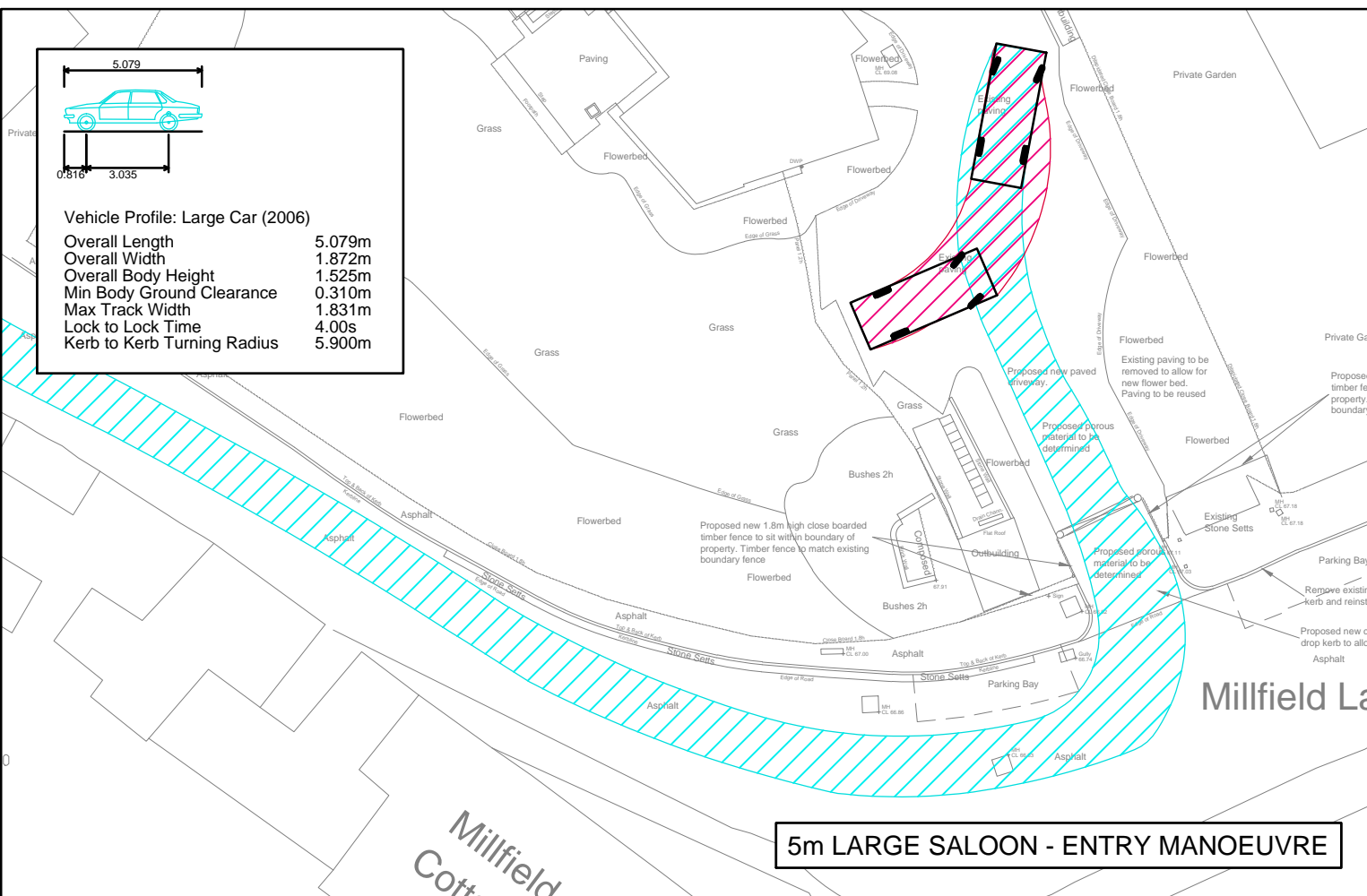


Vehicle Profile: Large Car (2006)
 Overall Length 5.079m
 Overall Width 1.872m
 Overall Body Height 1.525m
 Min Body Ground Clearance 0.310m
 Max Track Width 1.831m
 Lock to Lock Time 4.00s
 Kerb to Kerb Turning Radius 5.900m



Crowd Dynamics International Ltd
 3 Station Road West
 Oxted
 Surrey
 RH8 9EE
 Tel: +44 (0) 20 7922 8861

Note: Based on Cluttons drawing no. 24818/16M/P/01, Rev P1, 22.1.16
 Rev A - New fence line added. DD/TS. 4.2.16

Project Title: 16 Millfield Lane
 Location: London N6

Drawing Title: Swept Path Analysis
 Scale: 1:250 @ A3
 Date: 2.2.2016

Revision: HE
 Drawn by: DD
 Checked by: TS
 Drawing No. CD508R/AT/H01
 © Crown copyright 2014 All rights reserved. Licence number 100053515