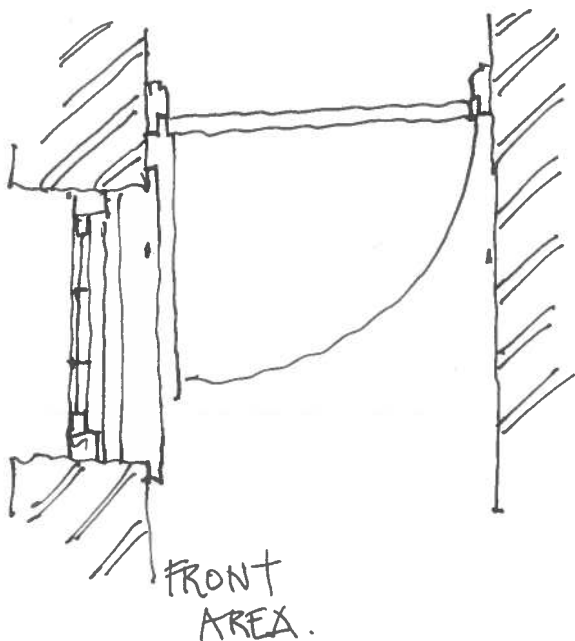


NEW PAINTED
 SOFT WOOD DOOR
 WITH HARD WOOD
 CILL TO PROVIDE
 ACCESS TO FRONT
 BASEMENT AREA
 @ 35 LOMB'S
 CONDUIT STREET
 LONDON WC1N 3NG
 FEBRUARY 2016



JAMES CORST ARCHITECTS
 THE HOUSE OF DETENTION
 CEBKENWELL CLOSE
 LONDON EC1R 0XJ.

SCALE 1:20.