

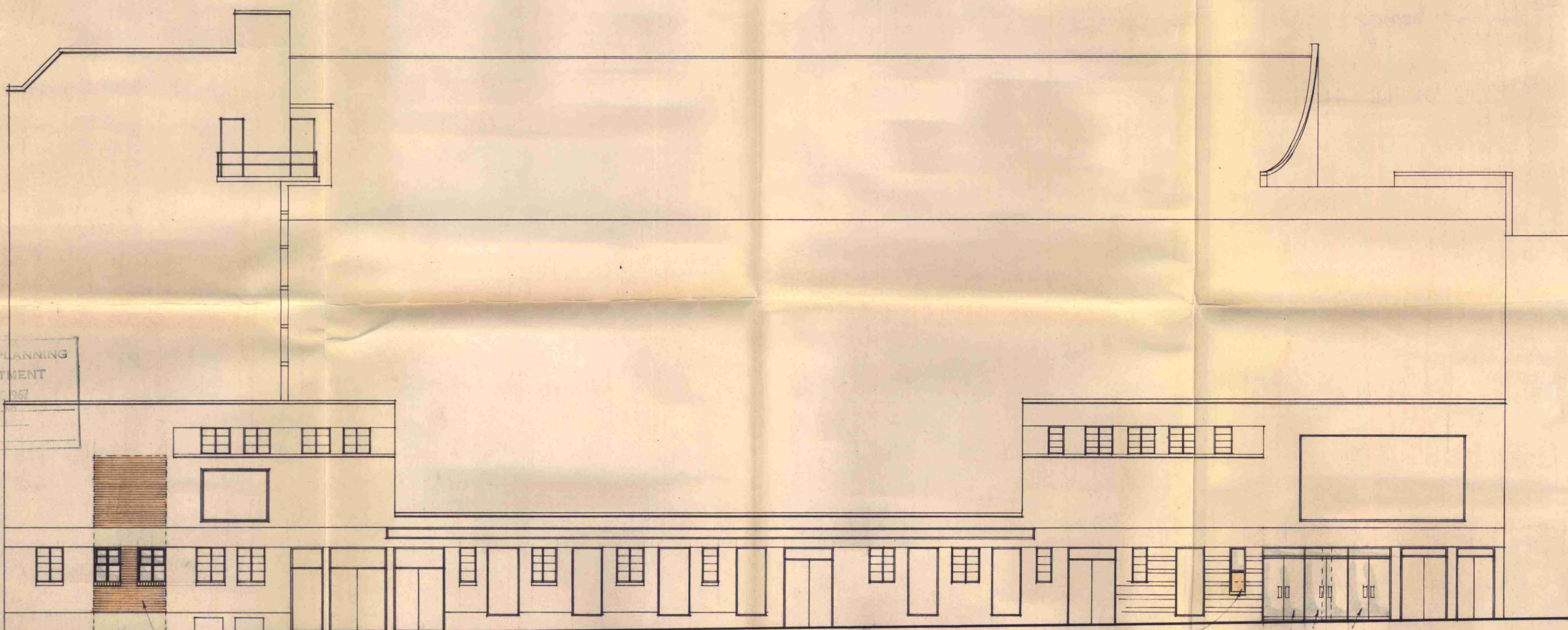
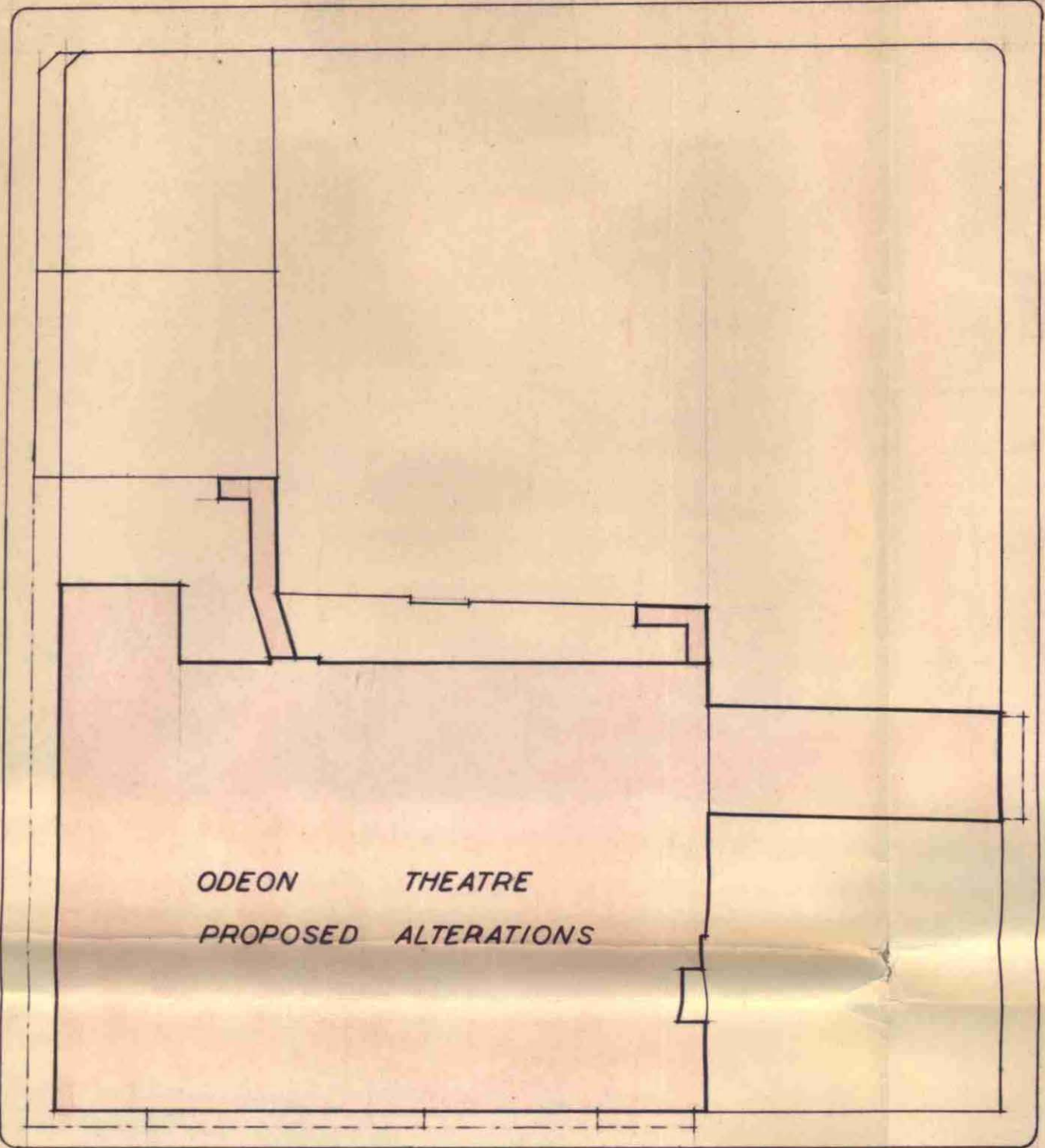
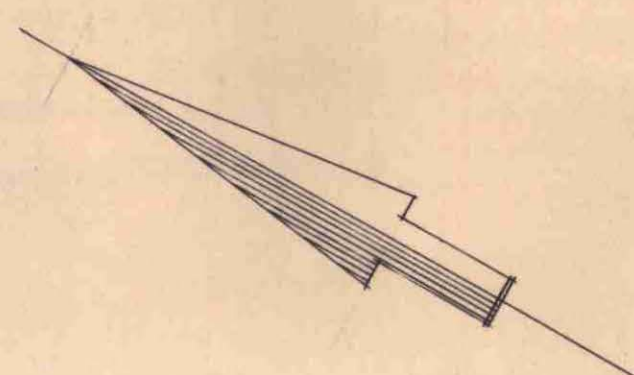
HIGH STREET

WELLINGTON STREET

PARK STREET

ARLINGTON ROAD

BLOCK PLAN
SCALE: 1/500



CAMDEN PLANNING DEPARTMENT
11 DEC 1967

CTR/J11/10/B/4400

Existing scene dock door removed and opening bricked up including new windows to match existing

Existing window removed and new enquiry hatch installed

New entrance doors

SIDE ELEVATION SOUTH WEST TO ARLINGTON ROAD

LONDON BOROUGH OF CAMDEN
PRESENTED TO THE PLANNING AND DEVELOPMENT COMMITTEE APPLICATIONS
SUB-COMMITTEE ON 17 JAN 1968
Revised 25th september 1967

DRWG. No. R/361/5

THE "ODEON" THEATRE PARK STREET CAMDEN TOWN LONDON N.W.1.
PROPOSED ALTERATIONS
FOR: THE RANK THEATRE DIVISION LTD.
SCALE: EIGHT FEET TO ONE INCH DATE: 2nd AUGUST 1967

RECEIVED
29 SEP 1967
S. E. LTD.

STEPHEN EASTEN LTD.
BUILDING CONTRACTORS.
WESTGATE HILL GRANGE
NEWCASTLE UPON TYNE 4.
TEL. 28638.