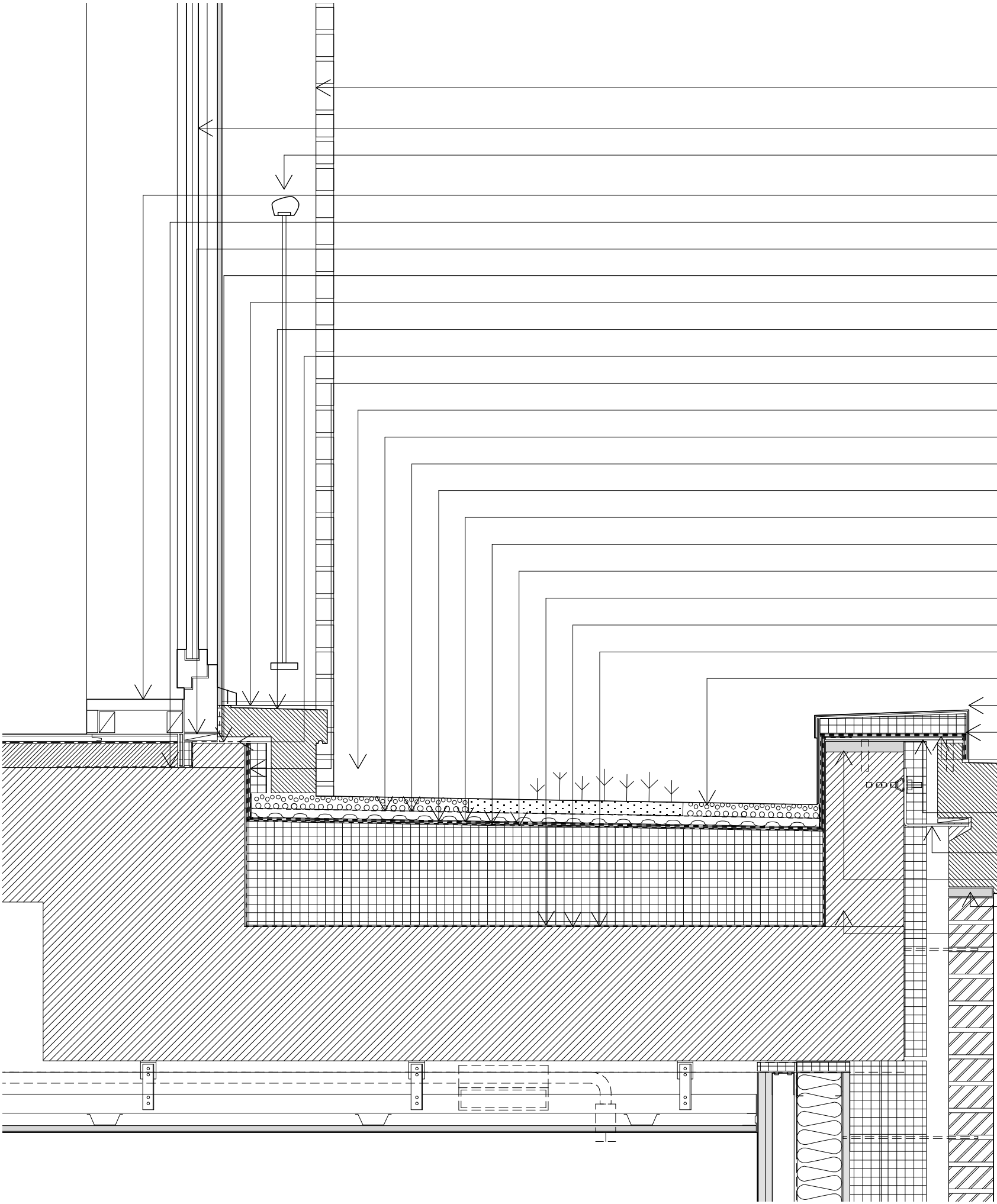


D06



- Pre-cast coloured concrete post / dowel fixing to sill and lintel, top fixing allows 10 deflection F31/124
- Aluminium window L10
- Steel balustrade / top rails in ppc metallic RAL / Oak handrail with oiled finish L30/550
- Oak sill, oiled
- 300 wide EPDM gaskett sealed to slab
- Ply packer
- 300 wide EPDM gaskett sealed to rc upstand
- Horizontal upstand sill
- Precast coloured concrete element / acid etched finish F31/123
- Water proofing
- Suitable bracket fixing
- 30 Skygarden sedum vegetation blanket S41/110A
- 1 Skygarden filter fleece S41/110A
- 20 Skygarden HDPE drainage board S41/110A
- 2 Skygarden protection fleece S41/110A
- 4 Sopralene Flam Garden 250 AF bituminous capping sheet S41/110A
- 3 Sopralene Ventirock bituminous waterproofing
- 210 PIR insulation / torch faced / 1° laid to fall / to achive 0.11W/m2K S41/110A
- 3 Sopravap ALU Activa 2 vapour barrier S41/110A
- Soprema Elastocol 500 primer S41/110A
- 300 RC slab
- 300 width gravel vegetation barrier
- Pressed metal flashing
- 20 min. PIR insulation
- Water proofing
- Precast concrete lintel / acid etched finish F31/123
- Two-way dowel fix, resin fixed in both elements using precast mounting holes and PVC dowel bar sleeves
- S/S support angle brackets / local nibs on concrete element
- 25 dry pack mortar
- 25 deflection joint with mastic pointing
- 175 x 400 in-situ concrete upstand

Sergison Bates architects^{LLP}
Envelope typical details

Fitzjohn's Avenue, NW3
Issued for Stage E

Architects	Date	Scale
Sergison Bates architects 34 Clerkenwell Close London EC1R 0AU United Kingdom	26/01/16	1:10@A3
Tel +44 (0)20 7255 1564 e-mail studio @sergisonbates.co.uk		

276/4405

Revision

Do not scale from this drawing
All dimensions to be verified on site
Limited Liability Partnership Registered in England & Wales
No. OC317501 Registered office as above