

01 TYPICAL DECK AND TIMBER SOFFIT SECTION
1:5@A1

TIMBER SOFFIT

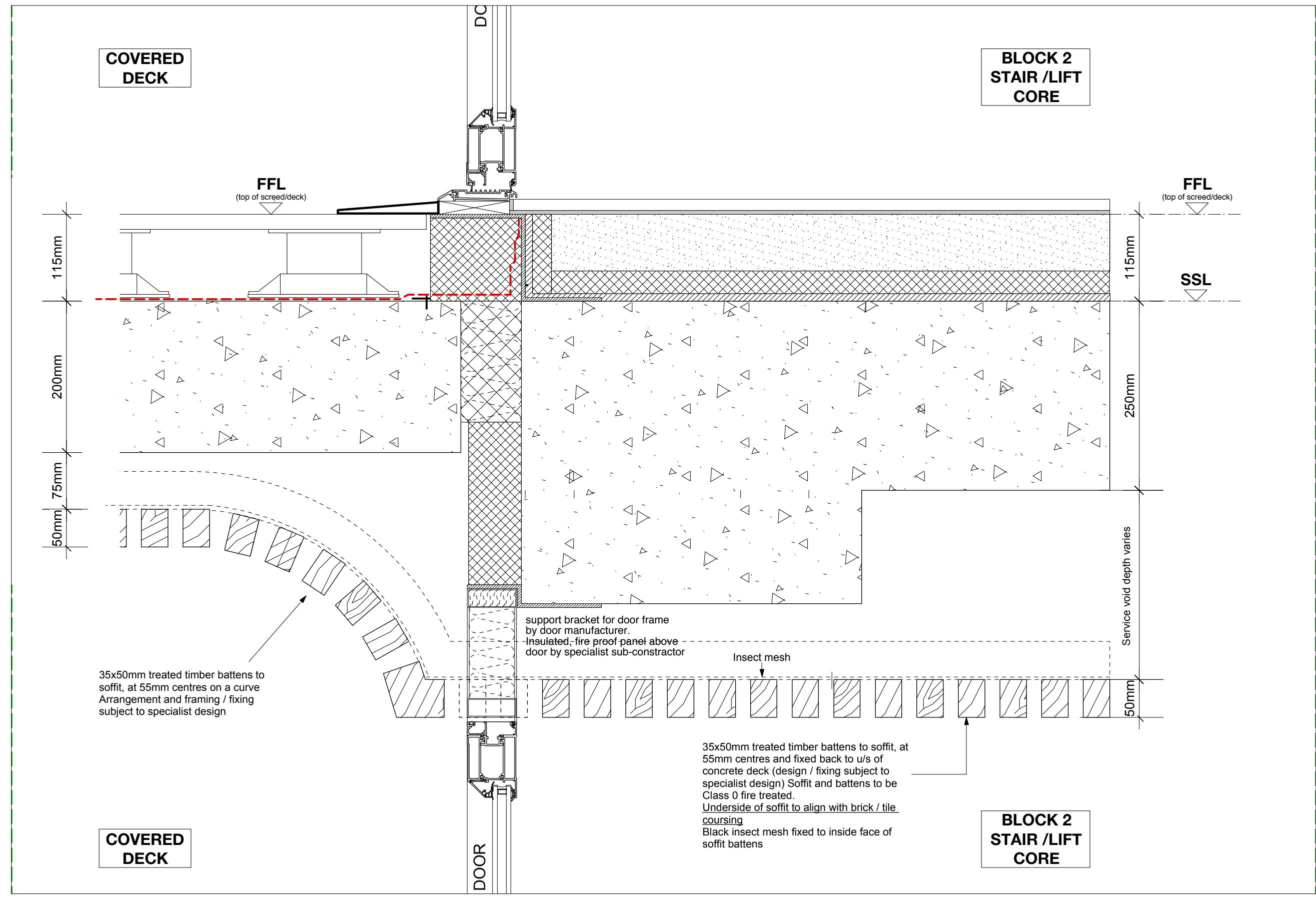
OAK BATTERNS SET OUT AS SHOWN ON DETAIL

LOCATED TO DECKS AND DECK LOBBY CEILINGS, ARCHWAY CEILINGS AND BLOCK 1 CORE A STAIR

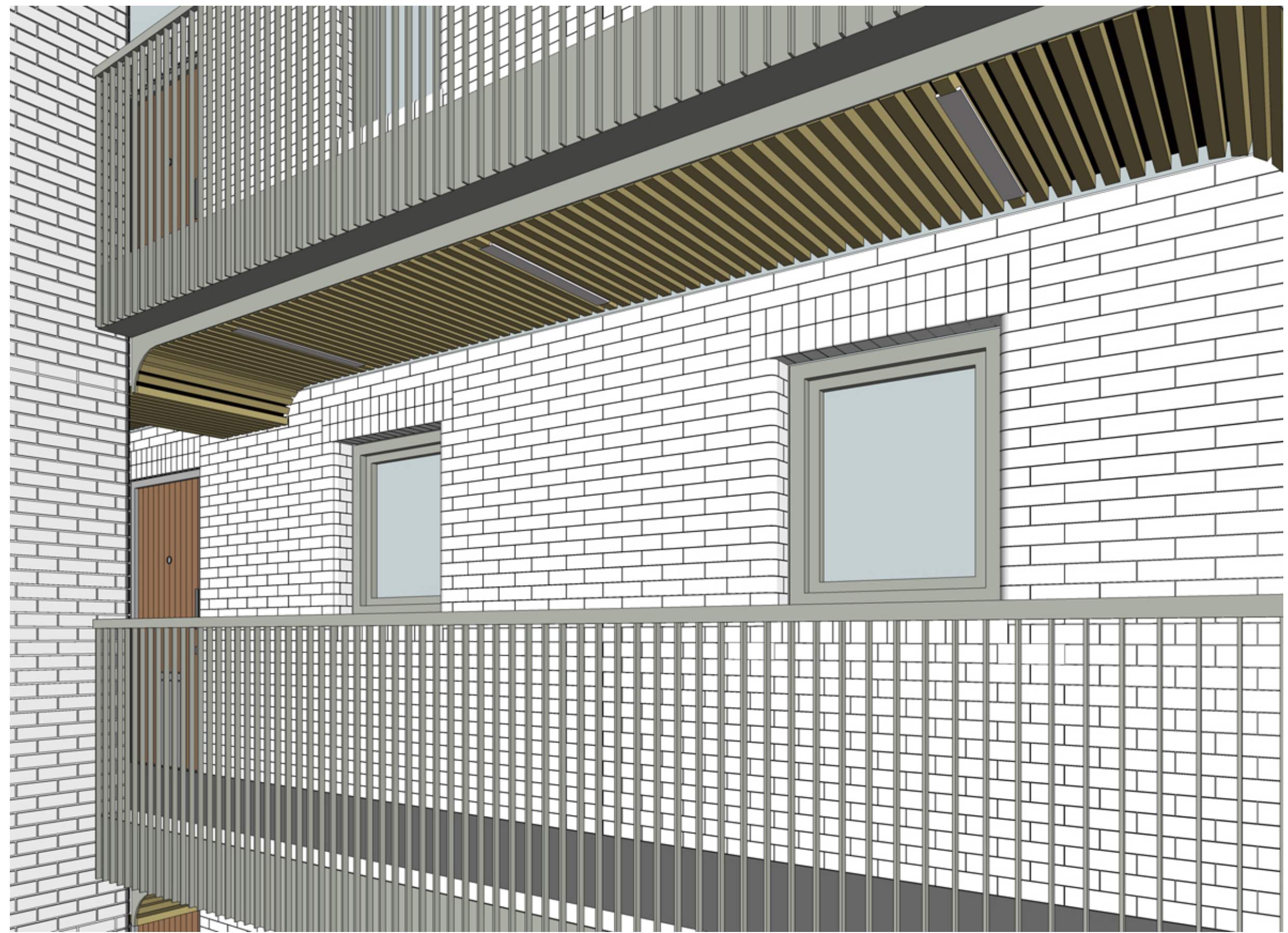
SOFFIT CURVES WHERE TRANSITION BETWEEN HIGH AND LOW SOFFIT IS REQUIRED TO TAKE BUILDING SERVICES

ALUMINIUM FASCIA PLATES (RAL 7044) TO FRONT OF SOFFITS AS SHOWN ON DETAIL AND VISUAL BELOW.

- Notes:
1. do not scale from this drawing
 2. survey indicative only
 3. proposals are subject to utilities surveys
 4. drawing to be read in conjunction with relevant consultant's information
 5. drawing to be read in conjunction with relevant specifications



02 TYPICAL DECK AND TIMBER SOFFIT SECTION - TRANSITION FROM HIGH TO LOW SOFFIT
1:5@A1



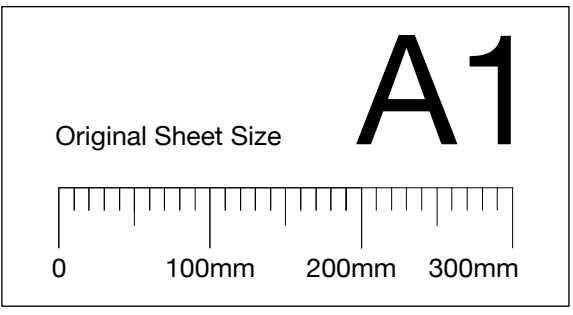
03 VISUAL SHOWING TIMBER SOFFIT PRINCIPLE
1:5@A1

11.02.16 - Issued to Planning for Conditional approval
Revisors:

PLANNING CONDITION



MatthewLloydArchitects LLP
1 The Hangar
Perseverance Works
38 Kingsland Road
London E2 8DD
T 020 7613 1934
email: mail@matthewlloyd.co.uk
www.matthewlloyd.co.uk ©2014



Date:	Scale:	Drawn by:
FEB 16	1:5 @A1 / 1:10 @ A3	gw
Project:		
Bourne Estate South for Higgins Construction PLC		
Drawing title:		
Block 1 & 2 Timber soffit - Sheet 1 of 2		
Reference:	Dwg No:	Rev:
BE14	PC.24-A.S.001	-