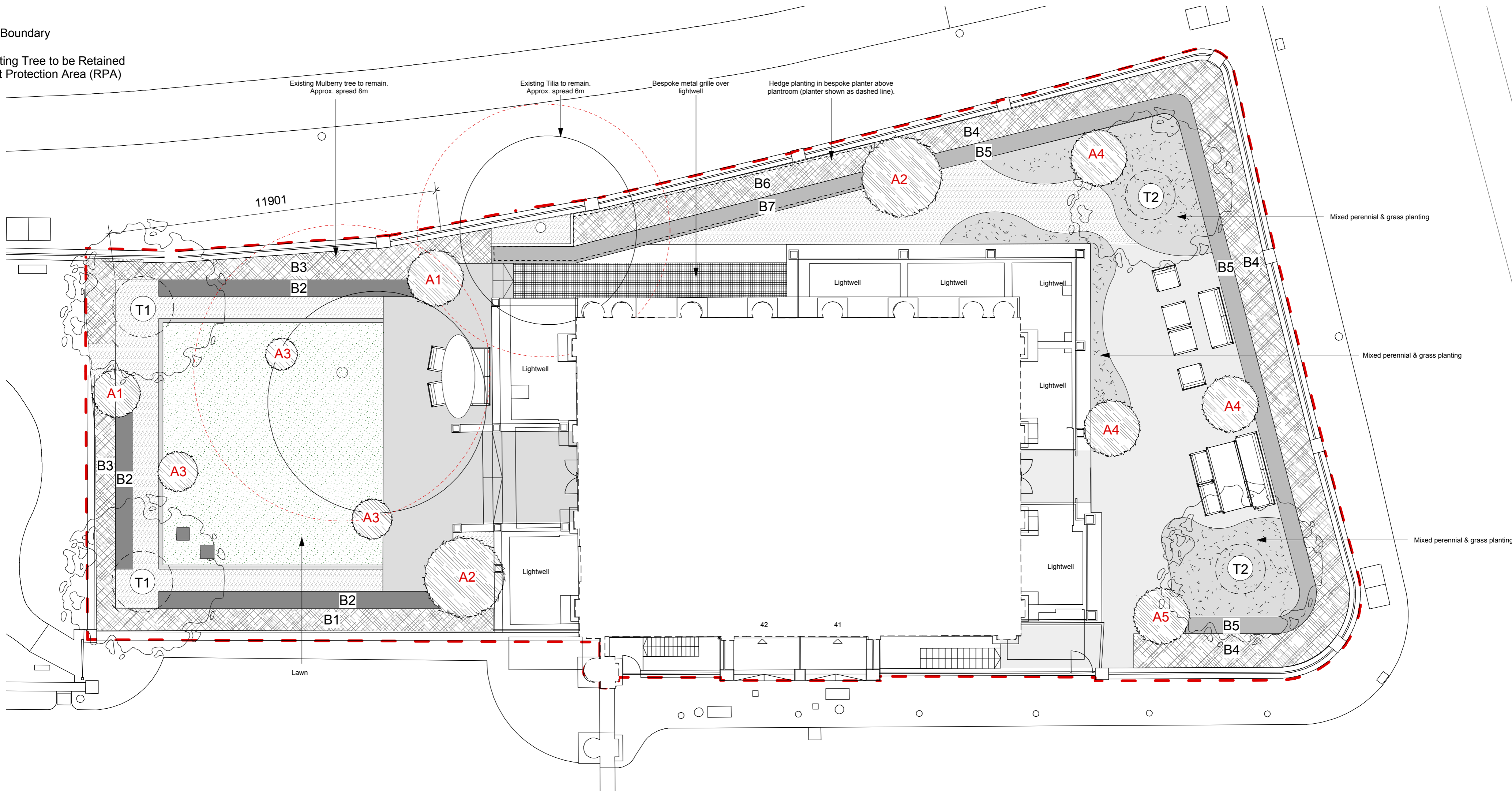


Legend

- Site Boundary
- Existing Tree to be Retained
Root Protection Area (RPA)



TOPIARY

Symbol	Plant Name	Diameter	Height	Shape	Quantity
A1	Osmanthus/ illex	1.8m Ø	1.8m HT	Loose beehive	2
A2	Camellia	2.0m Ø	2.3m HT	Small multi-stem	2
A3	Osmanthus/ Camellia	1.1 - 1.5m Ø	0.8 - 1.2m HT	Loose dome	3
A4	Osmanthus / Camellia	1.8 - 2.2m Ø	0.9 - 1.2m HT	Loose dome	3
A5	Osmanthus/ Camellia	2.0m Ø	2.2m HT	Loose beehive	1

HEDGING

Symbol	Plant Name	Width	Height	Approx. L/m
B1	Taxus baccata	900mm	3.0m HT	15
B2	Fagus sylvatica	600mm	1.5m HT	27
B3	Taxus baccata	900mm	2.5m HT	25
B4	Taxus baccata	900mm	2.0m HT	40
B5	Buxus sempervirens	600mm	1.1m HT	36
B6	Taxus baccata	900mm	1.4m HT	11
B7	Buxus sempervirens	600mm	0.5m HT	14

NOTE
Landscape Contractor to allow 10% extra for all hedge units

TREES

Symbol	Plant Name	Spread	Height	Girth	Quantity
T1	Quercus ilex	5-6m	8-9m HT	70-80cm	2
T2	Amelanchier multistem	6.5-7m	5-6m HT	-	2

PERENNIAL PLANTING

Approx. total 50sq/m mixed perennial & grass planting

Notes:

- All landscape materials specified should;
- Not be deleterious to health and safety; or
- Not adversely affect performance or durability in the particular circumstances in which they are used;
- Comply with the relevant British or European Standards (where applicable);
- Comply with the relevant codes of practice or applicable Agreement Certificates;
- Comply with good garden design practice; or
- Comply with the guide "Good Practice in the Selection of Construction Materials 2011" (March 2011) (British Council for Offices) or the BRE Digest

