

Project: Chester Terrace
Reference: PRSM-1665
Revision: First Issue
Date: 10/09/2015

luminaire schedule

Preliminaries

ELECTRICAL CONTRACTOR'S OBLIGATIONS:

- To ensure the correct supply current/voltage at the lamp.
- To verify that all luminaires and associated components have been installed according to the relevant Manufacturer's recommendations, and to Foundry drawings, details, and specifications.
- To verify that the Lighting Control System has been installed and cabled according to the relevant Manufacturer's recommendations.
- To make Foundry aware of any site condition concerning the lighting installation that varies from the drawn information and design intent.
- To cable the installation in accordance with the latest IEE or local prevailing regulations.
- To verify all fixing detail/cut-out, recess dimensions and setting out. Foundry cannot accept responsibility for luminaires installed in a manner other than intimated in the relevant drawings or as otherwise agreed.
- To verify all quantities independently of this specification and check against the appropriate drawings.
- To verify and site measure all linear LED, cold cathode, fibre optic dimensions prior to procurement.
- To ensure, where specified luminaires are to be used as part of the temporary site illumination, that said luminaires are fully cleaned and relamped where necessary prior to commissioning and handover.
- The make available adequate personnel, including at least one electrician, and all necessary access equipment is provided for any focusing and scene setting, as is required to commission the installation.

Project: Chester Terrace
Reference: PRSM-1665
Revision: First Issue
Date: 10/09/2015

Revision by: DH
Checked by: NS
First issue: 10/09/2015

Notes:

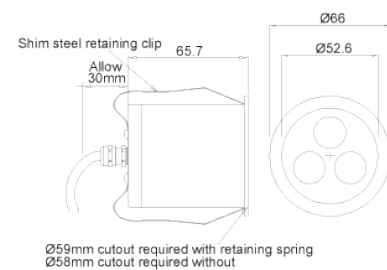
Project: Chester Terrace
Reference: PRSM-1665
Revision: First Issue
Date: 10/09/2015

luminaire reference:

A

product: Mole Type M

description: Floor recessed uplight



luminaire: finish: phosphorous bronze
IP rating: IP66
dimensions: 66mm x 65.7mm (Dia. x H)

cutout: 59mm (Dia.)
recess depth: 100mm

lamp: ref: n/a
voltage: 9.9v
wattage: 6.9w @ 700mA
beam angle: 34°
colour temperature: 2800k
cap: n/a

accessories: Honeycomb anti-glare louvre

control gear: Mains dimmable constant current LED driver.

control gear notes: Driver to be mounted in an IP rated enclosure and accessible position no more than 30m from first fitting.

manufacturer: n/a

contact: Marvin George - 020 7232 4710

product code: n/a

quantity:

notes:

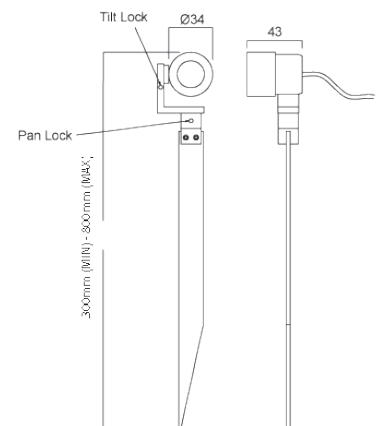
Project: Chester Terrace
Reference: PRSM-1665
Revision: First Issue
Date: 10/09/2015

luminaire reference:

B

product: Tadpole Spike

description: Floor mounted spiked spotlight



luminaire: finish: phosphorous bronze
IP rating: IP66
dimensions: 34mm x 43mm 291mm (Dia. x W x H)

cutout: n/a
recess depth: n/a

lamp: ref: n/a
voltage: 3.1v
wattage: 1.1w @ 350mA
beam angle: 17.9°
colour temperature: 2800k
cap: n/a

accessories: Anti-glare snoot

control gear: Mains dimmable constant current LED driver.

control gear notes: Driver to be mounted in an IP rated enclosure and accessible position no more than 30m from first fitting.

manufacturer: n/a

contact: Marvin George - 020 7232 4710

product code: n/a

quantity:

notes: Spike available in custom lengths between 300mm and 800mm. Anti-glare snoot available.

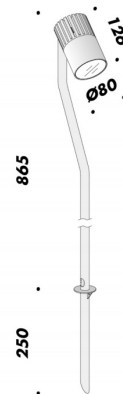
Project: Chester Terrace
Reference: PRSM-1665
Revision: First Issue
Date: 10/09/2015

luminaire reference:

C

product: P2

description: Floor mounted spiked spotlight



luminaire: finish: antique brown
IP rating: IP65
dimensions: 80mm x 126mm 865mm (Dia. x W x H)

cutout: n/a
recess depth: n/a

lamp: ref: n/a
voltage: 35.3v
wattage: 24.7w @ 700mA
beam angle: 17°
colour temperature: 2800k
cap: n/a

accessories: n/a

control gear: Mains dimmable constant current LED driver.

control gear notes: Driver to be mounted in an IP rated enclosure and accessible position no more than 30m from first fitting.

manufacturer: n/a

contact: Marvin George - 020 7232 4710

product code: n/a

quantity:

notes: Spike height available in 25mm or 800mm version.

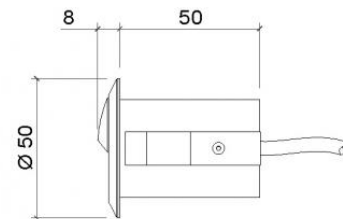
Project: Chester Terrace
Reference: PRSM-1665
Revision: First Issue
Date: 10/09/2015

luminaire reference:

D

product: Diode 30

description: Wall recessed step wash light



luminaire: finish: antique bronze
IP rating: IP64
dimensions: 50mm x 58mm (Dia. x H)

cutout: 38mm (Dia.)
recess depth: n/a

lamp: ref: n/a
voltage: 3.4v
wattage: 2.4w @700mA
beam angle: 15°
colour temperature: 3150k
cap: n/a

accessories: n/a

control gear: Mains dimmable constant current LED driver.

control gear notes: Driver to be mounted in an IP rated enclosure and accessible position no more than 30m from first fitting.

manufacturer: n/a

contact: Marvin George - 020 7232 4710

product code: n/a

quantity:

notes:

Project: Chester Terrace
Reference: PRSM-1665
Revision: First Issue
Date: 10/09/2015

luminaire reference:

E

product: Blakes Table

description: Rechargeable battery operated lantern



luminaire: finish: phosphorous bronze
IP rating: IP43
dimensions: 140mm x 140mm x 280mm (W x D x H)

cutout: n/a
recess depth: n/a

lamp: ref: n/a
voltage: 230v
wattage: 3w @ 700mA
beam angle: n/a
colour temperature: 2700k
cap: n/a

accessories: n/a

control gear:
control gear notes:

manufacturer: n/a
contact: Marvin George - 020 7232 4710
product code: n/a
quantity:

notes:

Project: Chester Terrace
Reference: PRSM-1665
Revision: First Issue
Date: 10/09/2015

luminaire reference:

F

product: Montrose
description: Wall light



luminaire: finish: weathered brass
IP rating: IP44
dimensions: 216mm x 400mm x 160mm (W x D x H)

cutout: n/a
recess depth: n/a

lamp: ref: n/a
voltage: 230v
wattage: 7w (MAX)
beam angle: n/a
colour temperature: n/a
cap: E27

accessories: n/a

control gear:
control gear notes:

manufacturer: n/a
contact: Marvin George - 020 7232 4710
product code: n/a
quantity:

notes: Fitting to be supplied with squirrel cage filament lamp.

Project: Chester Terrace
Reference: PRSM-1665
Revision: First Issue
Date: 10/09/2015

luminaire reference:

G

product: Frog Type K

description: Floor mounted spiked projector light



luminaire: finish: weathered brass
IP rating: IP66
dimensions: 88mm x 250mm 150mm (Dia. x W x H)

cutout: n/a
recess depth: n/a

lamp: ref: n/a
voltage: 11.7v
wattage: 8.2w @ 700mA
beam angle: n/a
colour temperature: 2800k
cap: n/a

accessories: Adjustable tree strap

control gear: Mains dimmable constant current LED driver.

control gear notes: Driver to be mounted in an IP rated enclosure and accessible position no more than 30m from first fitting.

manufacturer: n/a

contact: Marvin George - 020 7232 4710

product code: n/a

quantity:

notes: Fitting to be mounted on adjustable tree strap.

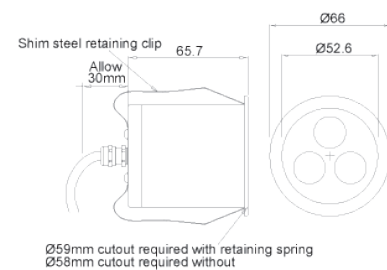
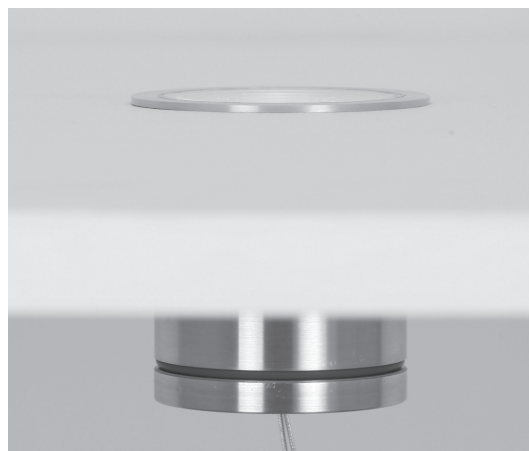
Project: Chester Terrace
Reference: PRSM-1665
Revision: First Issue
Date: 10/09/2015

luminaire reference:

H

product: Mole Type M

description: Floor recessed uplight



luminaire: finish: phosphorous bronze
IP rating: IP66
dimensions: 66mm x 65.7mm (Dia. x H)

cutout: 59mm (Dia.)
recess depth: 100mm

lamp: ref: n/a
voltage: 9.9v
wattage: 6.9w @ 700mA
beam angle: 18°
colour temperature: 2800k
cap: n/a

accessories: Honeycomb anti-glare louvre

control gear: Mains dimmable constant current LED driver.

control gear notes: Driver to be mounted in an IP rated enclosure and accessible position no more than 30m from first fitting.

manufacturer: n/a

contact: Marvin George - 020 7232 4710

product code: n/a

quantity:

notes: