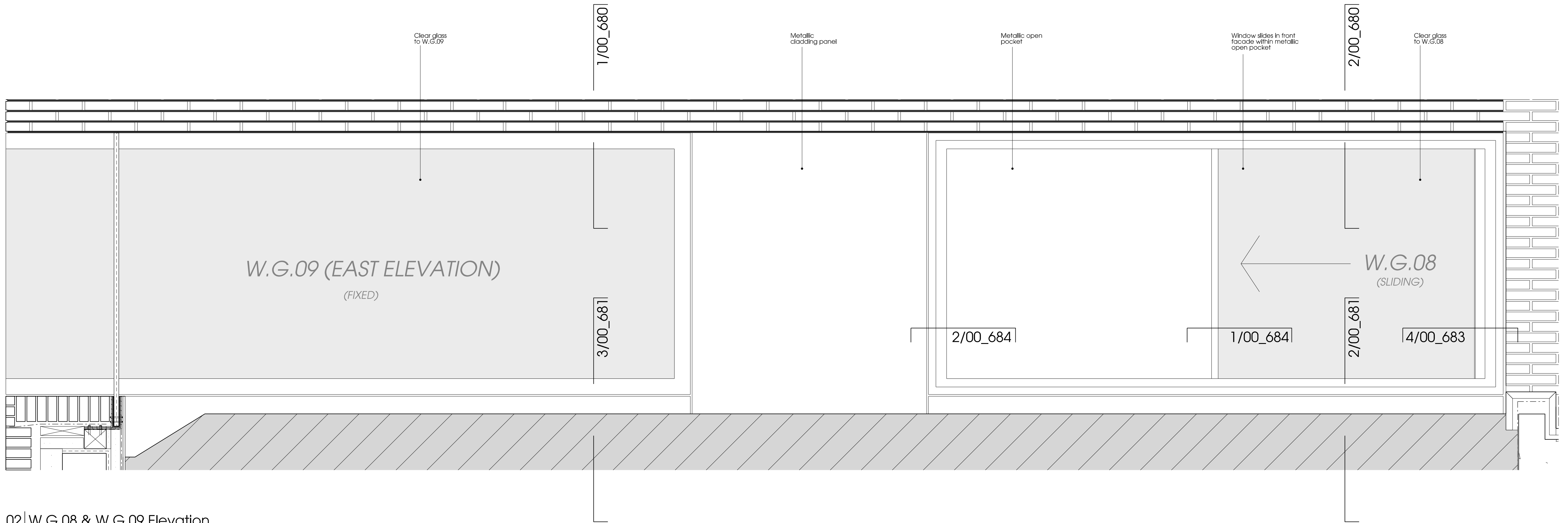
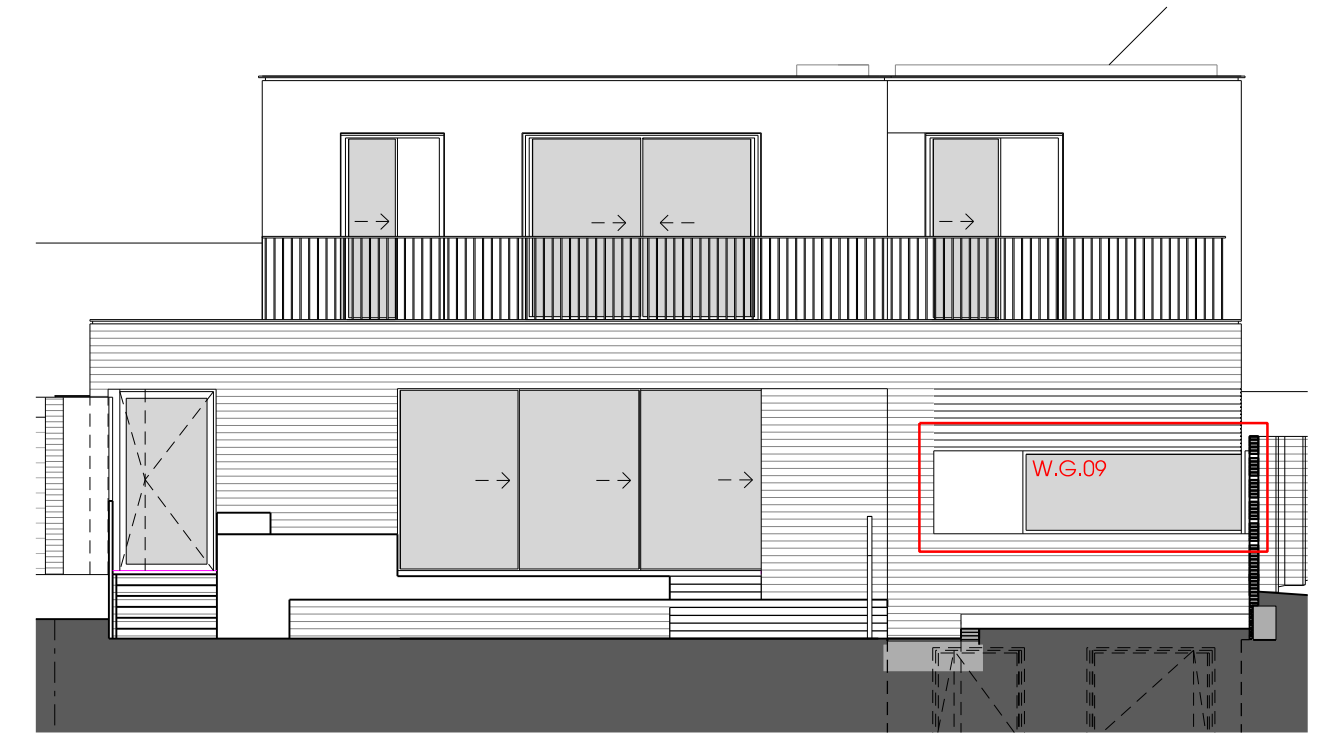


01 | W.G.09 Elevation  
South Elevation



02 | W.G.08 & W.G.09 Elevation  
East Elevation



03 | South Elevation Key

#### Notes

Contractor to check all dimensions on site. Do not scale from this drawing. Stanton Williams to be advised of any variation between the drawings and site conditions.

© Stanton Williams. All rights described in Chapter IV of the Copyright, Designers and Patents Act 1998 have been asserted.

To be read in conjunction with the specification and all relevant drawings.

Note: Unless stated otherwise, all metalwork (including window frames, gates, fences, and facade cladding panels) to be finished in a bronze powdercoating colour

#### Revision Date Description

00 29/01/2016 Issued for Discharge of Planning Condition

Stanton Williams  
36 Graham Street  
London N1 8GJ  
Phone +44 (0)20 7880 6400  
Email:  
www.stantonwilliams.com

STANTON  
WILLIAMS

#### Project

Fleet House  
3 Admiral's Walk, Hampstead  
London NW3 6RS

#### Drawing Title

Window & Door Elevations  
East and South Elevations  
W.G.08 & W.G.09

#### Date

29/01/2016

#### Scale @ A1 (A3)

1:10 @ A1

#### Status

Planning

#### Drawn

DVK

#### Checked

KI

#### Approved

PR

#### Project No.

451

#### Drawing No.

PL\_724

#### Revision

00