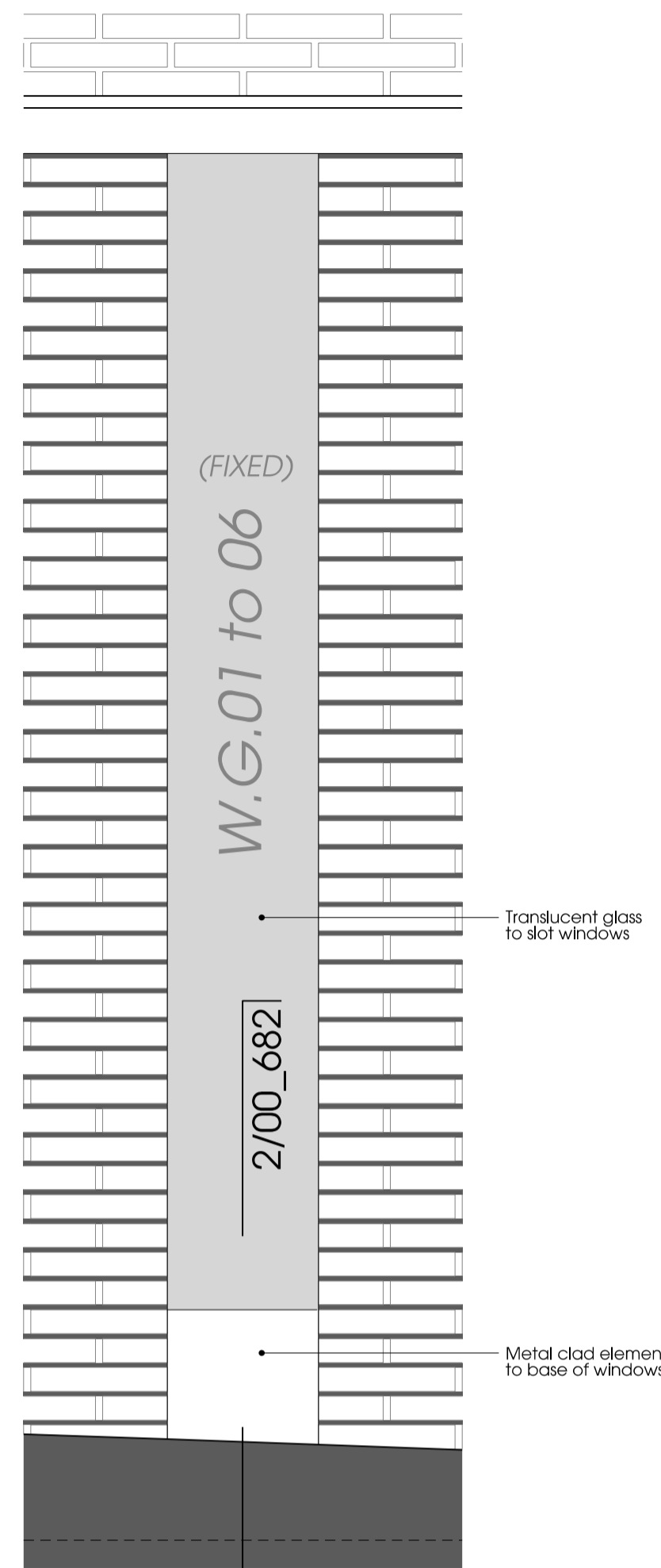


01 | W.F.02 Elevation
First Floor North Elevation

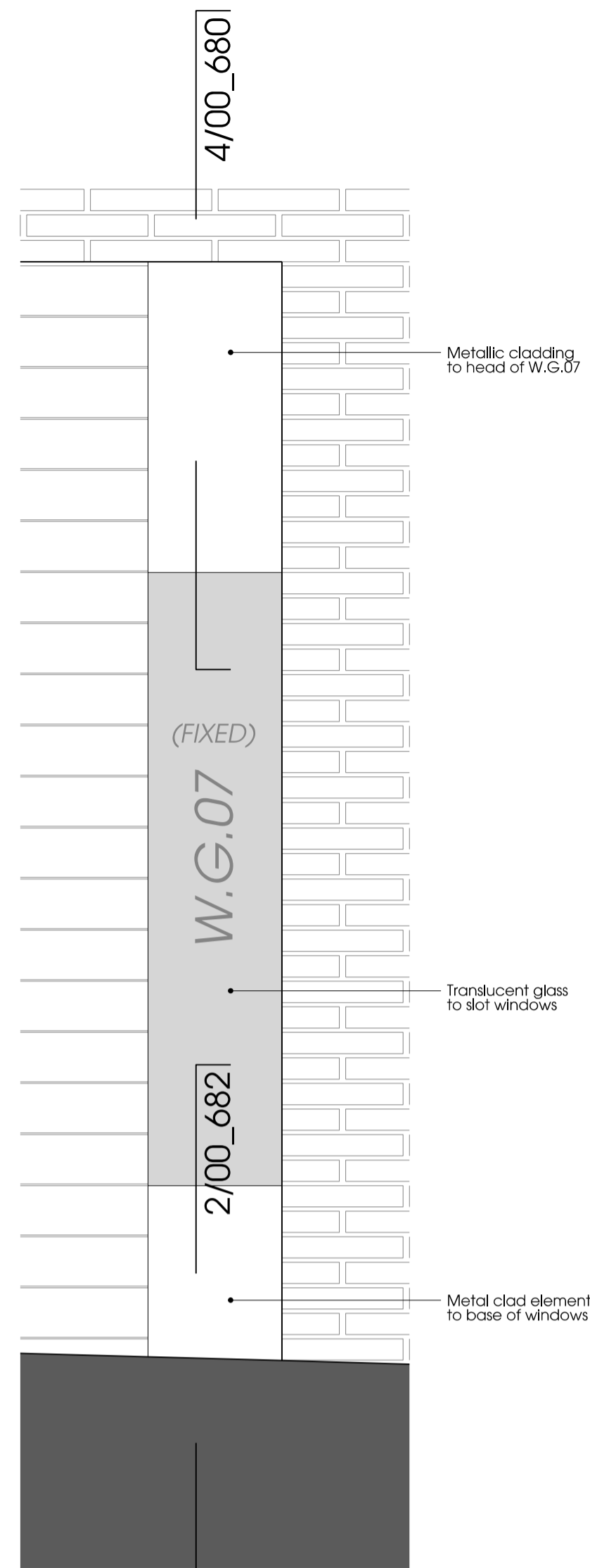
Clear glass to W.F.02



03 | W.G.01-06 Elevation
Ground Floor Slot Windows to North Elevation

Translucent glass to slot windows

Metal clad element to base of windows

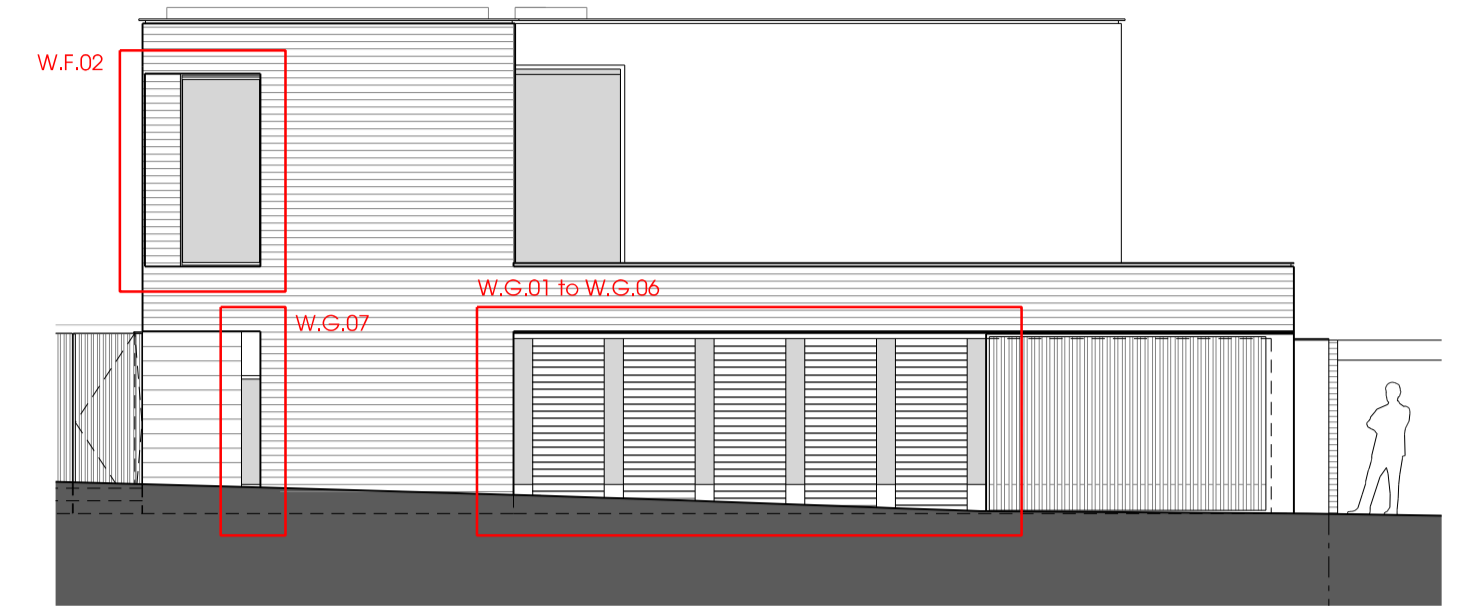


05 | W.G.07 Elevation
Ground Floor Slot Window to North Elevation

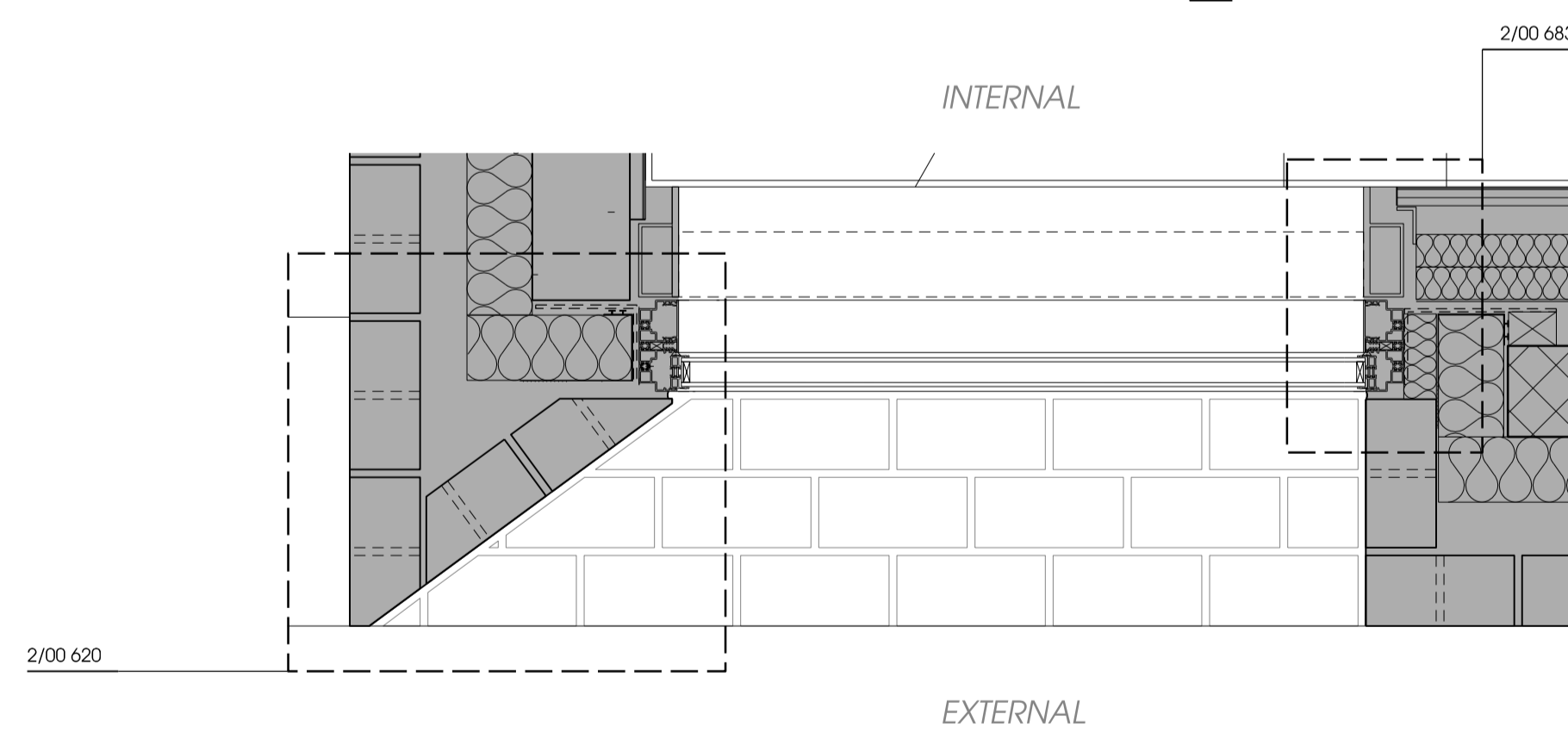
Metallic cladding to head of W.G.07

Translucent glass to slot windows

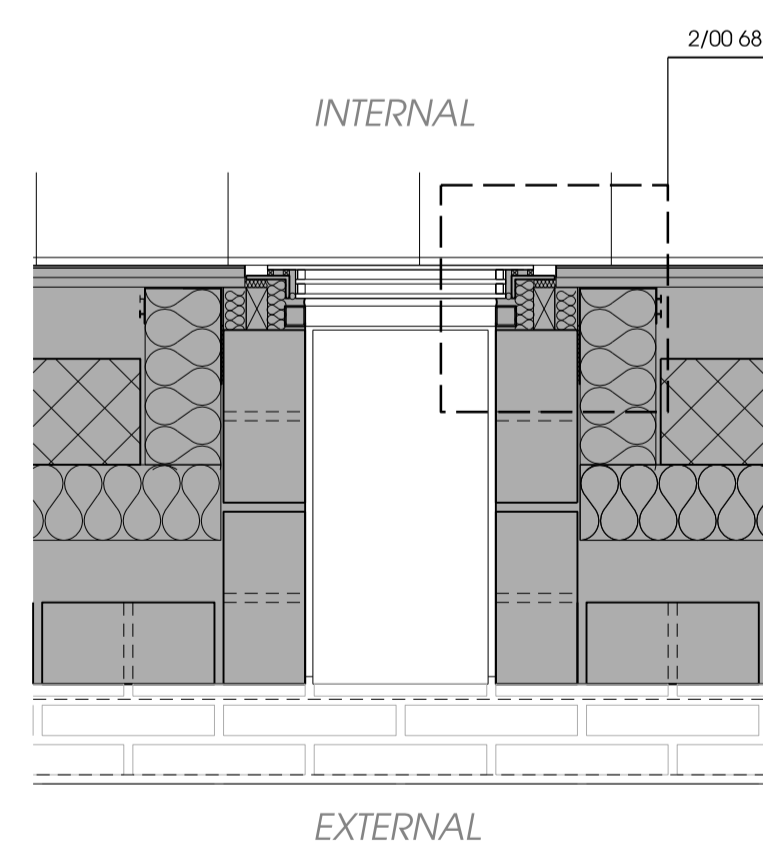
Metal clad element to base of windows



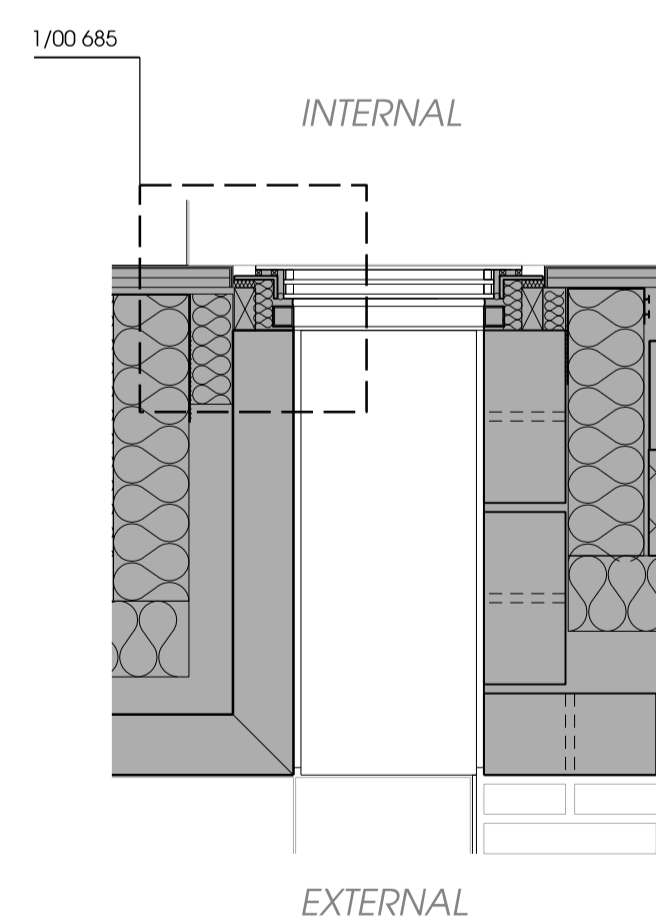
07 | North Elevation Key



02 | W.F.02 Plan
First Floor North Elevation



04 | W.G.01-06 Plan
Ground Floor Slot Windows to North Elevation



06 | W.G.07 Plan
Ground Floor Slot Window to North Elevation

Notes

Contractor to check all dimensions on site. Do not scale from this drawing. Stanton Williams to be advised of any variation between the drawings and site conditions.

Note: Unless stated otherwise, all metalwork (including window frames, gates, fences, and facade cladding panels) to be finished in a bronze powdercoating colour

© Stanton Williams. All rights described in Chapter IV of the Copyright, Designers and Patents Act 1998 have been asserted.

To be read in conjunction with the specification and all relevant drawings.

Revision Date Description

00 29/01/2016 Issued for Discharge of Planning Condition

Stanton Williams
36 Graham Street
London N1 8GJ
Phone +44 (0)20 7880 6400
Email:
www.stantonwilliams.com

STANTON
WILLIAMS

Project

Fleet House
3 Admiral's Walk, Hampstead
London NW3 6RS

Drawing Title

Window & Door Elevations
North Elevation
W.F.02, W.G.01, & W.G.07

Date 29/01/2016 Scale @ A1 (A3) 1:10 @ A1 Status Planning

Drawn DVK Checked KI Approved PR

Project No. 451 Drawing No. PL_720 Revision 00