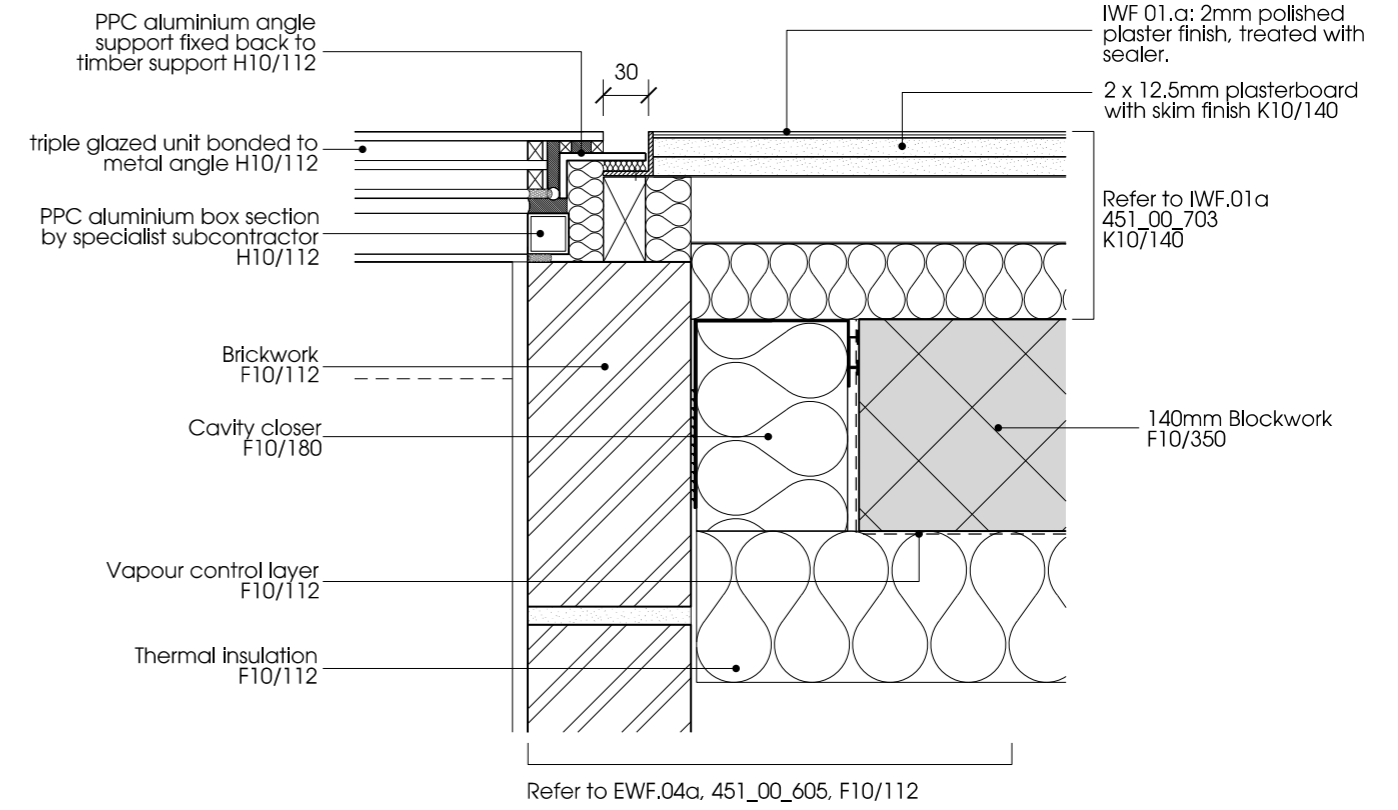
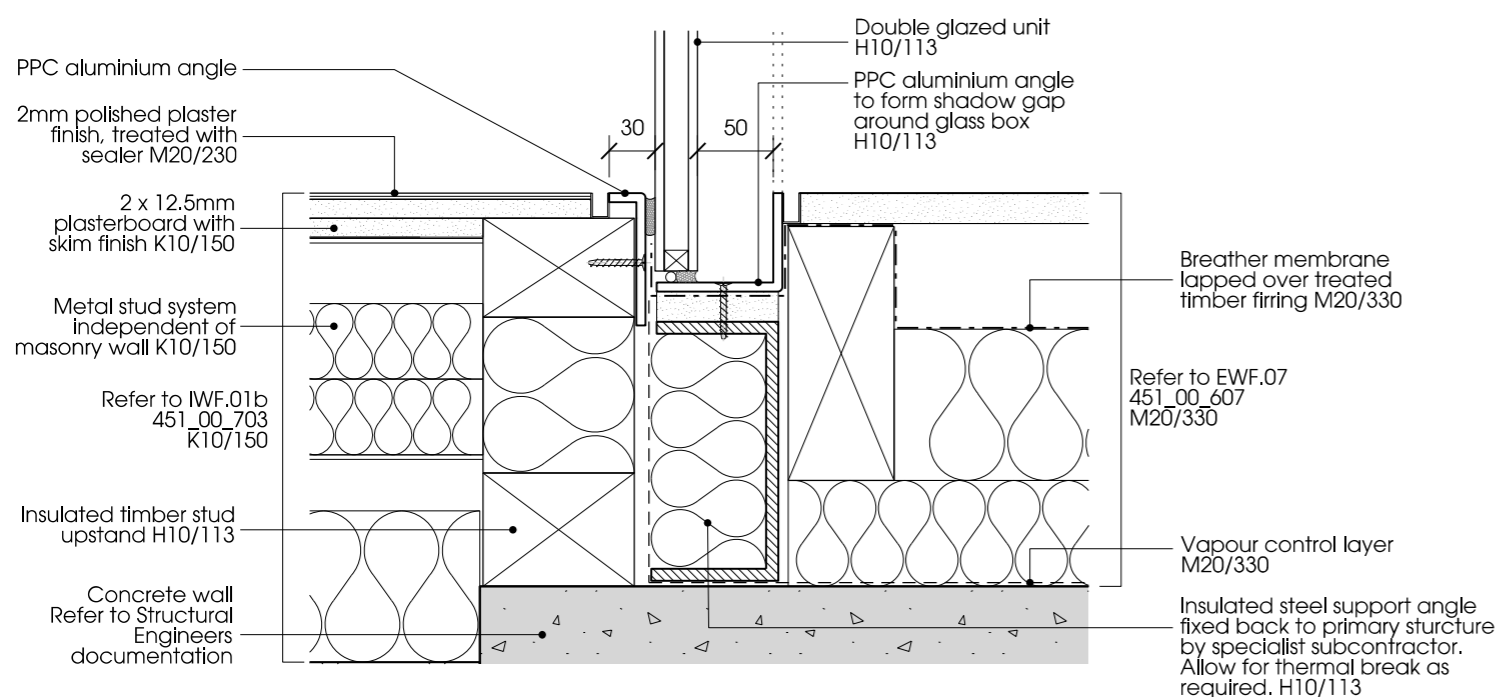


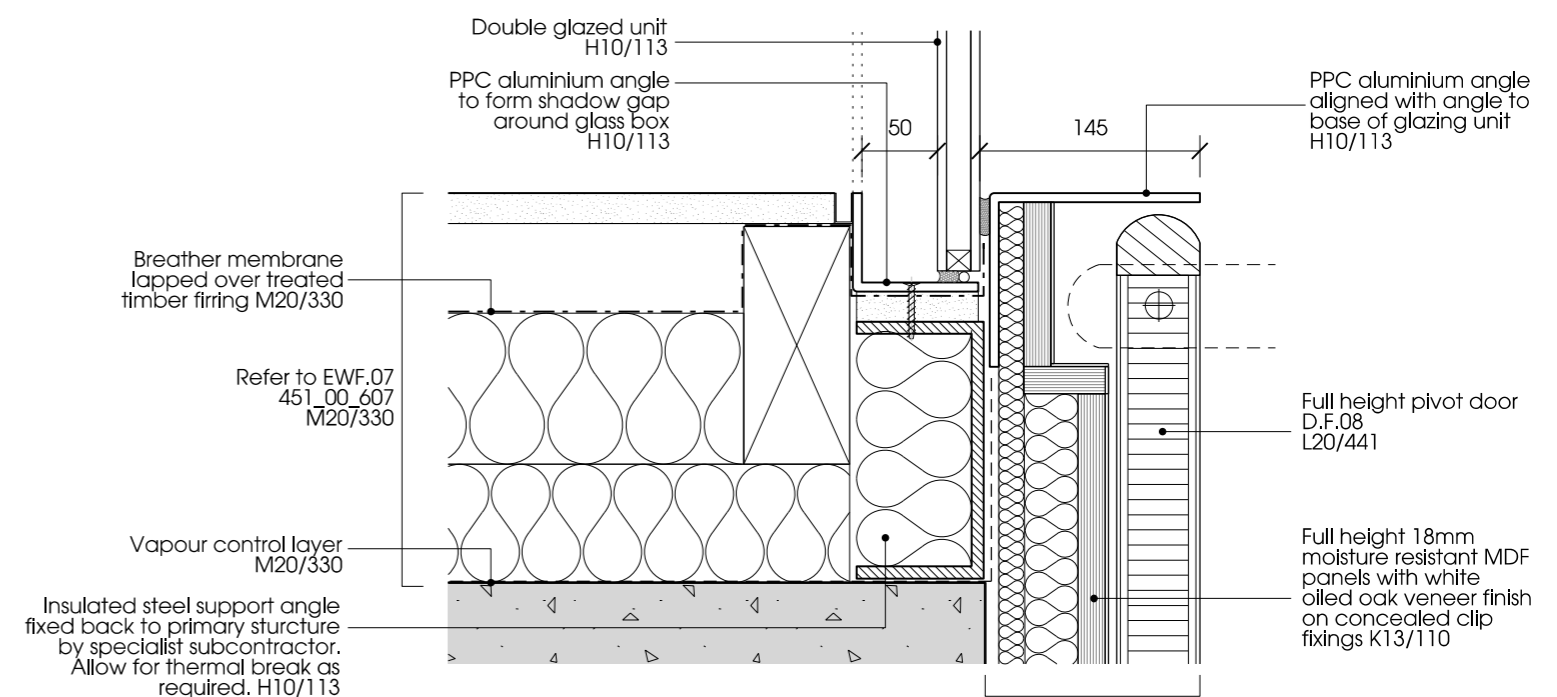
01 | FRAMELESS FIXED - SLOT WINDOW - STONE
W.G.01 (1 SIDE ONLY)



02 | FRAMELESS FIXED - SLOT WINDOW - BRICK
W.G.01 (1 SIDE ONLY) - 07



03 | Frameless Fixed - Glass Box
W.F.01



04 | Frameless Fixed - Glass Box
W.F.01

Note:
For typical external soffit details refer to drawings: 451_00_608 and 451_00_609
For typical external wall details refer to drawings: 451_00_604 to 451_00_607
For individual window specification refer to specific window number in H10

Notes

Contractor to check all dimensions on site. Do not scale from this drawing. Stanton Williams to be advised of any variation between the drawings and site conditions.

© Stanton Williams. All rights described in Chapter IV of the Copyright, Designers and Patents Act 1998 have been asserted.

To be read in conjunction with the specification and all relevant drawings.

Key:

Revision	Date	Description
C1	08/07/2015	Issued for Construction

Stanton Williams
36 Graham Street
London N1 8GJ
Phone +44 (0)20 7880 6400
Email
www.stantonwilliams.com

Project
Fleet House
3 Admiral's Walk, Hampstead
London NW3 6RS

Drawing Title
External Glazing
Typical Jamb Condition 03

Date	Scale @ A3	Status	Project No.	Drawing No.	Revision
08/07/2015	1:5	Construction	451	00_685	C1
Drawn	Checked	Approved			
LM	PT	PR			

