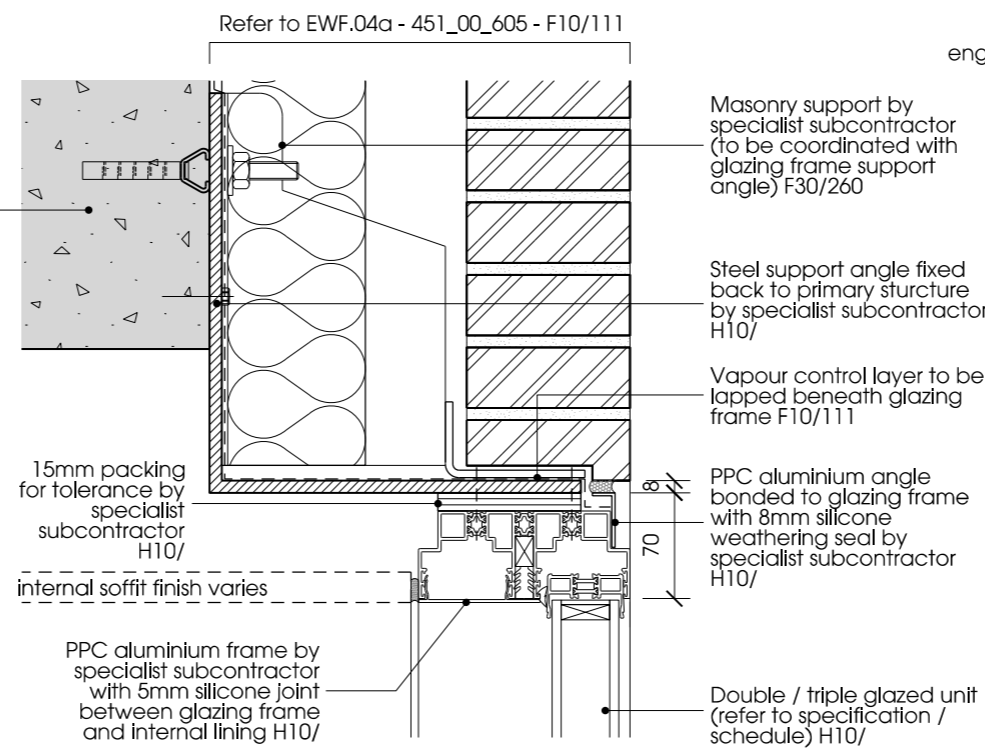


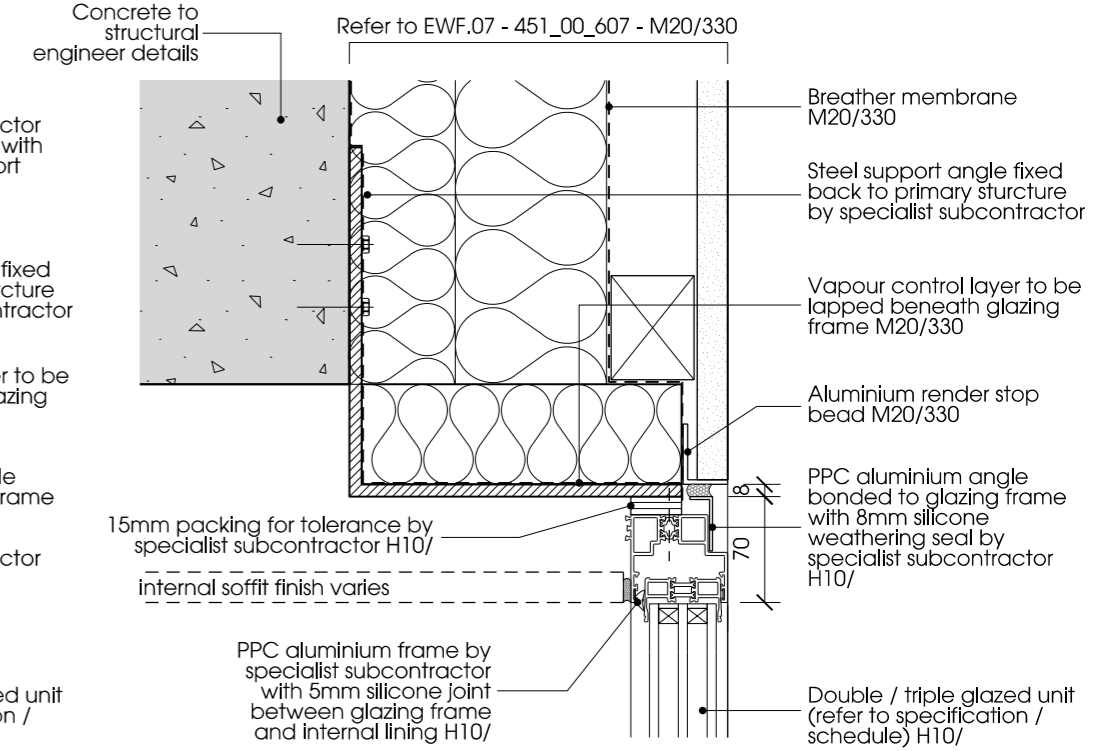
01 | FRAMELESS FIXED - FLUSH WITH FACADE

W.G.09



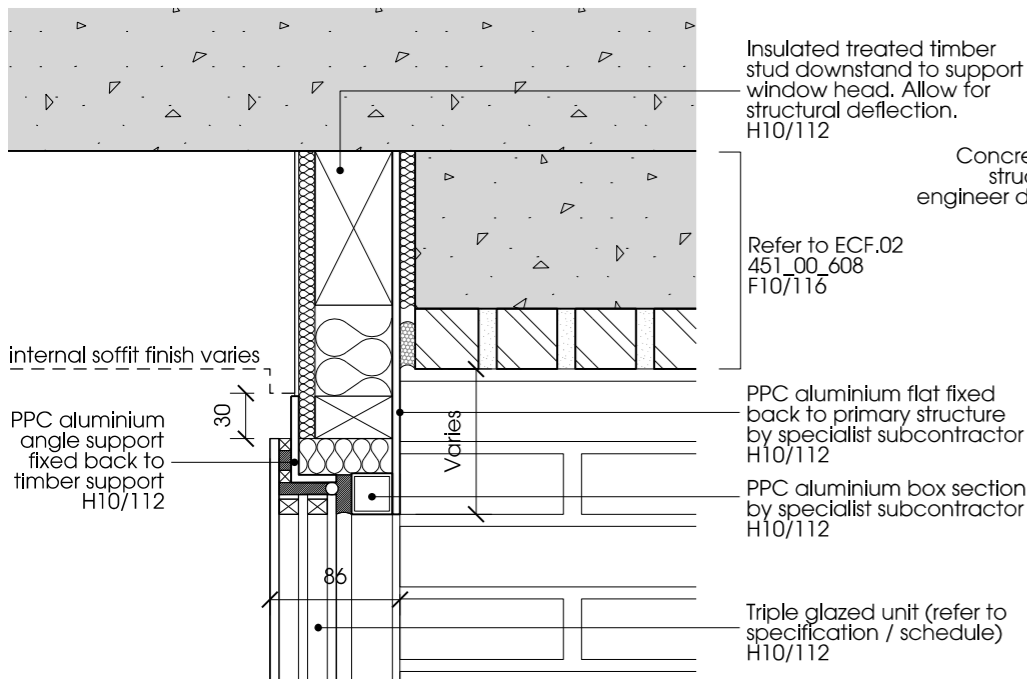
02 | FRAMED SLIDING / PIVOT - FLUSH WITH BRICK FACADE

W.G.08, D.EX.B01, D.EX.B02, D.EX.G.04



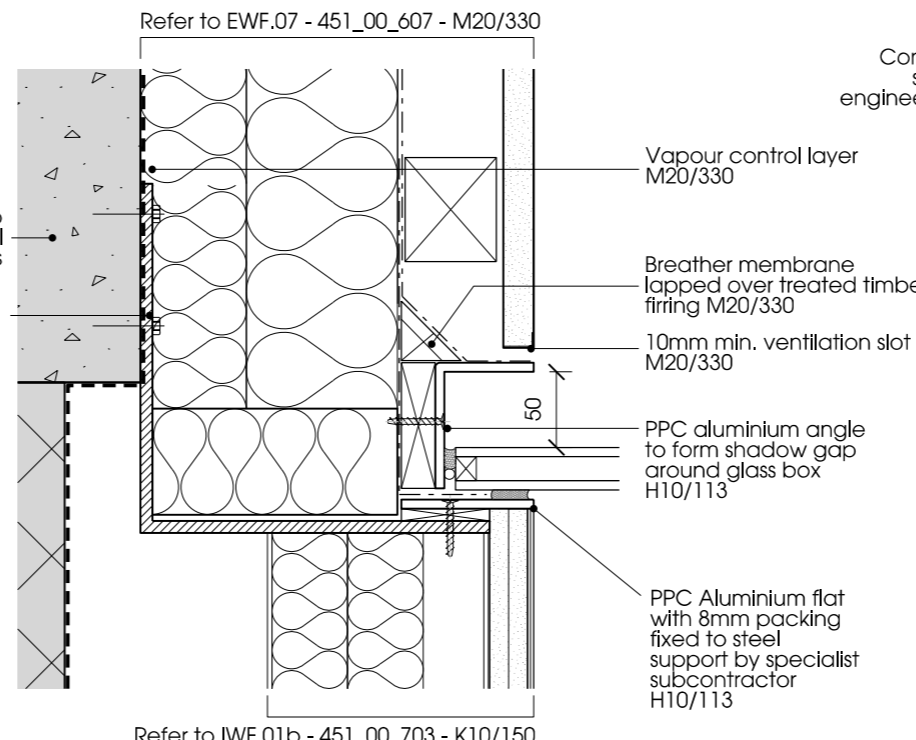
03 | FRAMED SLIDING / PIVOT - FLUSH WITH RENDER FACADE

W.F.05, W.F.06, W.F.07, D.EX.F.01



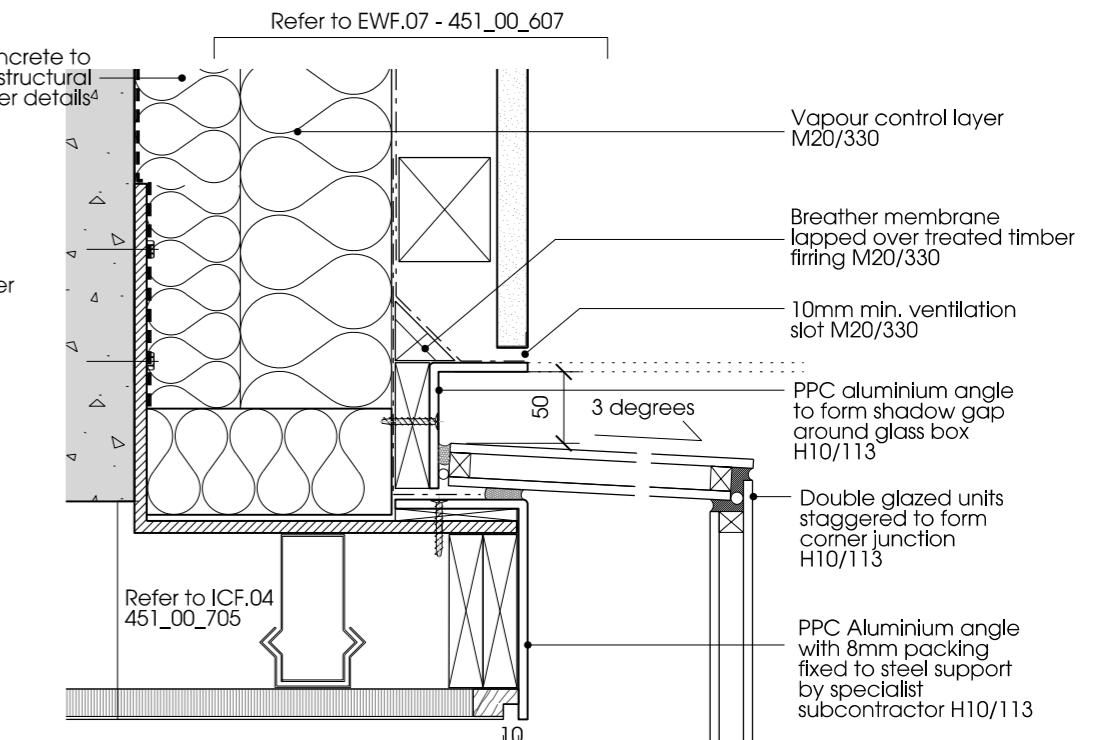
04 | FRAMELESS FIXED - RECESSED FROM FACADE

W.G.01 - W.G.07



05 | GLASS BOX - HEAD DETAIL WITH RENDER FACADE

W.F.01



06 | GLASS BOX - HEAD DETAIL WITH RENDER FACADE

W.F.01

Note:
For window specification refer to individual window number in Section H10

Notes	Key:	Revision	Date	Description
Contractor to check all dimensions on site. Do not scale from this drawing. Stanton Williams to be advised of any variation between the drawings and site conditions.		C1	08/07/2015	Issued for Construction

© Stanton Williams. All rights described in Chapter IV of the Copyright, Designers and Patents Act 1998 have been asserted.

To be read in conjunction with the specification and all relevant drawings.

Stanton Williams
36 Graham Street
London N1 8GJ
Phone +44 (0)20 7880 6400
Email
www.stantonwilliams.com

Project
Fleet House
3 Admiral's Walk, Hampstead
London NW3 6RS

Drawing Title
External Glazing
Typical Head Details

Date	Scale @ A3	Status	Project No.	Drawing No.	Revision
08/07/2015	1:5	Construction	451	00_680	C1
Drawn	Checked	Approved			
LM	PT	PR			

STANTON
WILLIAMS