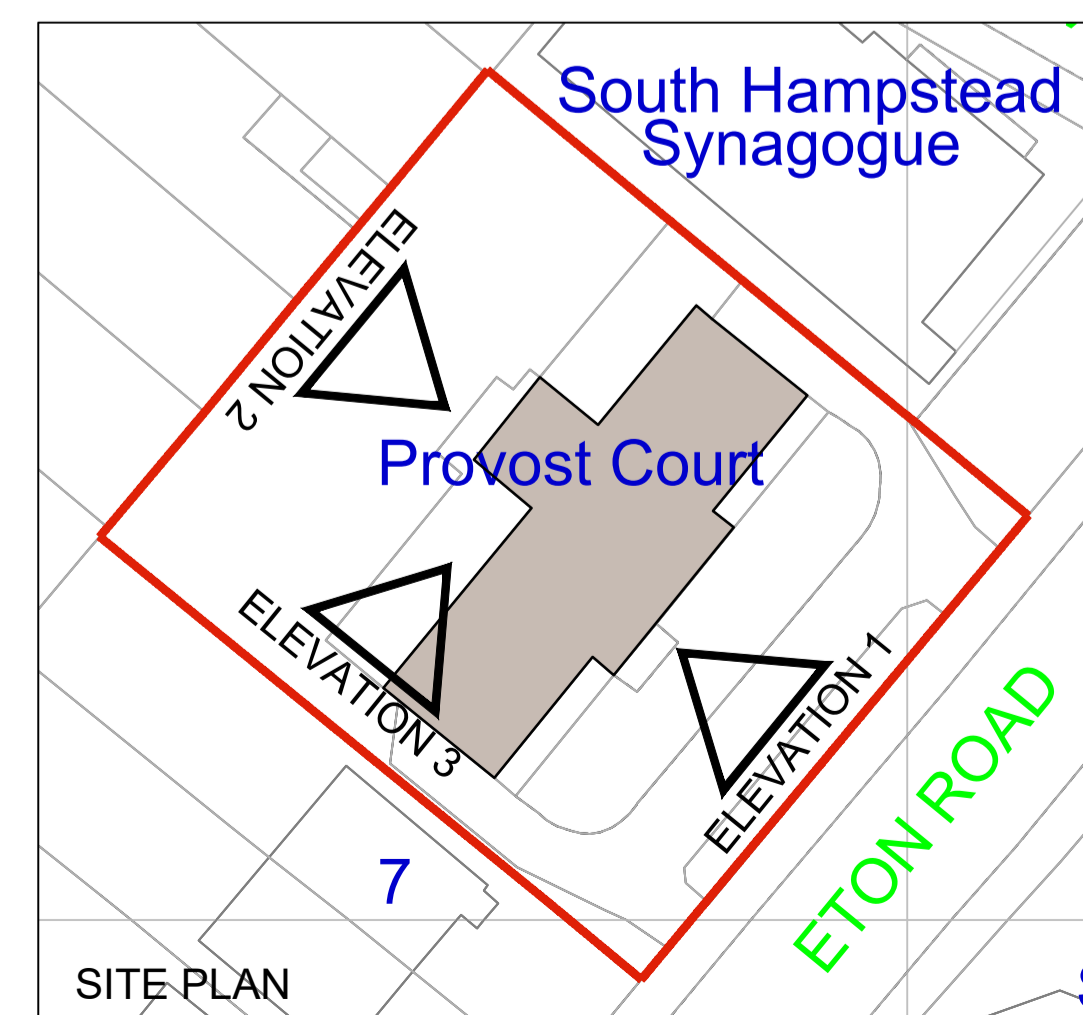


FRONT ELEVATION - I

NEW WINDOW KEY

- (A) ALITHERM 700 (TOPSWING REVERSIBLE) DOUBLE GLAZED ALUMINIUM POWDER COATED WINDOW - RAL 7044 (COLOUR TO BE CONFIRMED)
- (B) VISOGlide PLUS SLIDING PATIO DOORS. DOUBLE GLAZED ALUMINIUM POWDER COATED - RAL 7044 (COLOUR TO BE CONFIRMED)



B - Entrance canopy updated 04/02/16

A - Proposed window system updated and entrance canopy replaced 07/12/15 rev



- Milton House, 1 Milton Road, Peterborough PE2 8DZ Tel: 01733 344695
- 619 Holloway Road, London N19 5SS Tel: 020 7561 0189

project no 1510
Provost Court, Eton Road

drawing no GA 01 / B
PROPOSED FRONT ELEVATION

scale 1:75@A1 date 02.02.15 drawn JE / RE checked DD