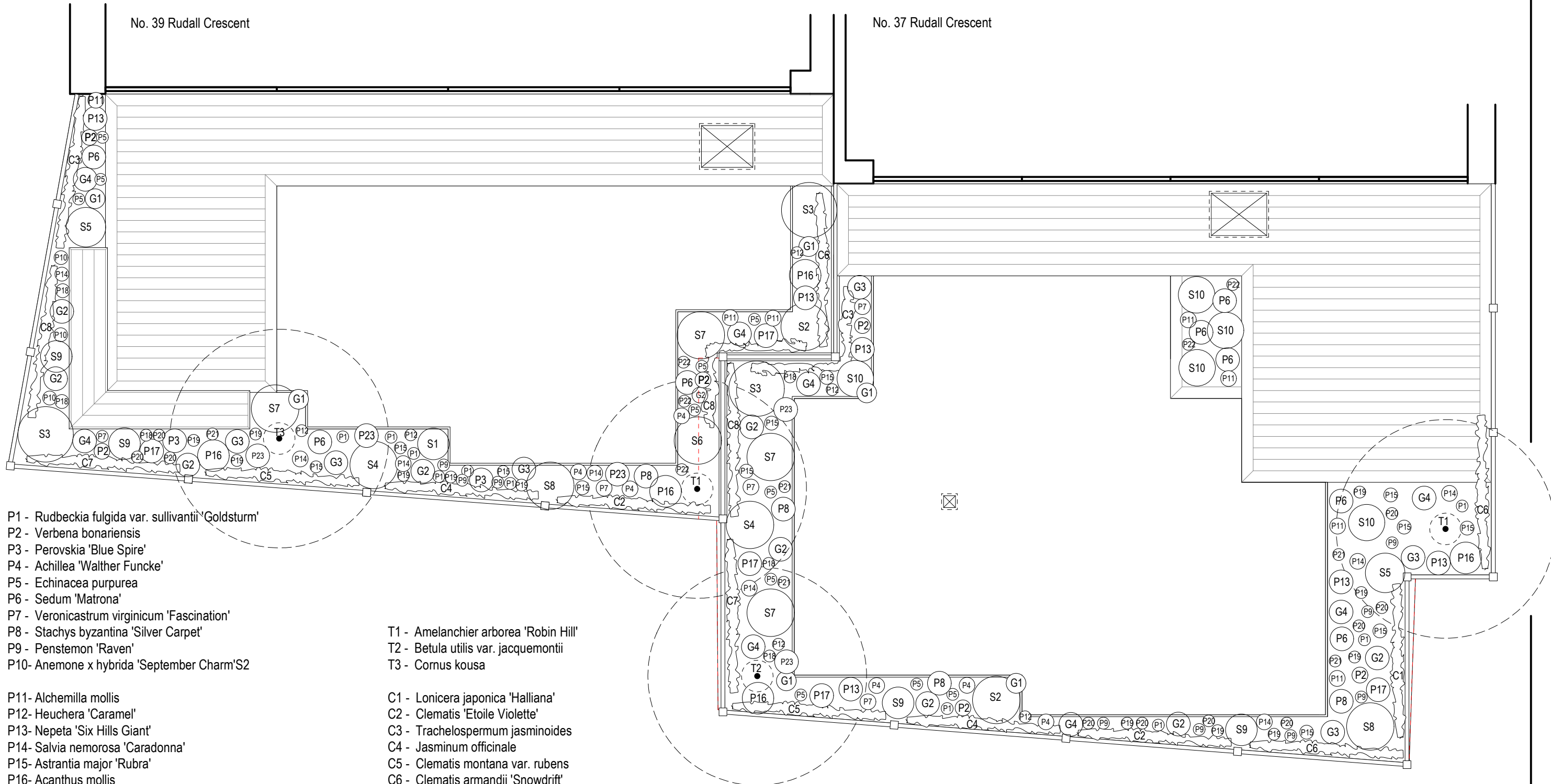


No. 39 Rudall Crescent

No. 37 Rudall Crescent



- P1 - Rudbeckia fulgida var. sullivantii 'Goldsturm'
- P2 - Verbena bonariensis
- P3 - Perovskia 'Blue Spire'
- P4 - Achillea 'Walther Funcke'
- P5 - Echinacea purpurea
- P6 - Sedum 'Matrona'
- P7 - Veronicastrum virginicum 'Fascination'
- P8 - Stachys byzantina 'Silver Carpet'
- P9 - Penstemon 'Raven'
- P10- Anemone x hybrida 'September Charm'S2

- T1 - Amelanchier arborea 'Robin Hill'
- T2 - Betula utilis var. jacquemontii
- T3 - Cornus kousa

- P11- Alchemilla mollis
- P12- Heuchera 'Caramel'
- P13- Nepeta 'Six Hills Giant'
- P14- Salvia nemorosa 'Caradonna'
- P15- Astrantia major 'Rubra'
- P16- Acanthus mollis
- P17- Euphorbia amygdaloides var. robbiae
- P18- Knautia macedonica
- P19- Penstemon 'Sour Grapes'
- P20- Penstemon 'White Bedder'
- P21- Heuchera 'Obsidian'
- P22- Heuchera 'Plum Pudding'
- P23- Heuchera 'Cherry Cola'

- C1 - Lonicera japonica 'Halliana'
- C2 - Clematis 'Etoile Violette'
- C3 - Trachelospermum jasminoides
- C4 - Jasminum officinale
- C5 - Clematis montana var. rubens
- C6 - Clematis armandii 'Snowdrift'
- C7 - Solanum laxum 'Album'
- C8 - Akebia quinata

- S1 - Sarcococca confusa
- S2 - Choisya ternata
- S3 - Cotinus coggygria 'Royal Purple'
- S4 - Berberis thunbergii f. atropurpurea
- S5 - Photinia 'Pink Marble'
- S6 - Rodgersia pinnata 'Chocolate Wing'
- S7 - Pittosporum tenuifolium
- S8 - Pittosporum tobira
- S9 - Persicaria bistorta 'Superba'

- G1 - Stipa tenuissima
- G2 - Calamagrostis x acutiflora 'Karl Foerster'
- G3 - Miscanthus sinensis 'Kleine Silberspinne'
- G4 - Molinia caerulea subsp. arundinacea 'Transparent'

FORK
garden design

2-3 Greenland Place, London NW1 0AP
www.forkgardendesign.com

Rear Planting Layout Plan

Designed for:
Bernard Howard
37-39 Rudall Crescent
Hampstead
London NW3



Scale: 1:50@A3
Drawing No: FGD133PP1
Revision No:
Date: 16.01.2015

Drawn by:
Philip Woodburn ©

All measurements are approximate and must be checked on site