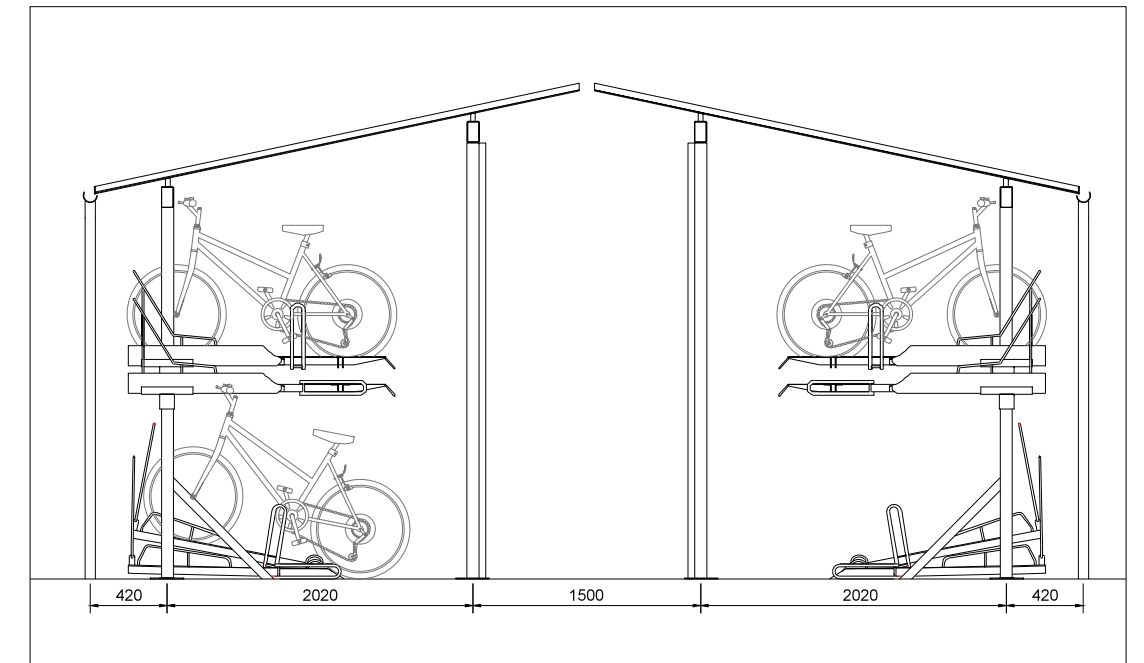
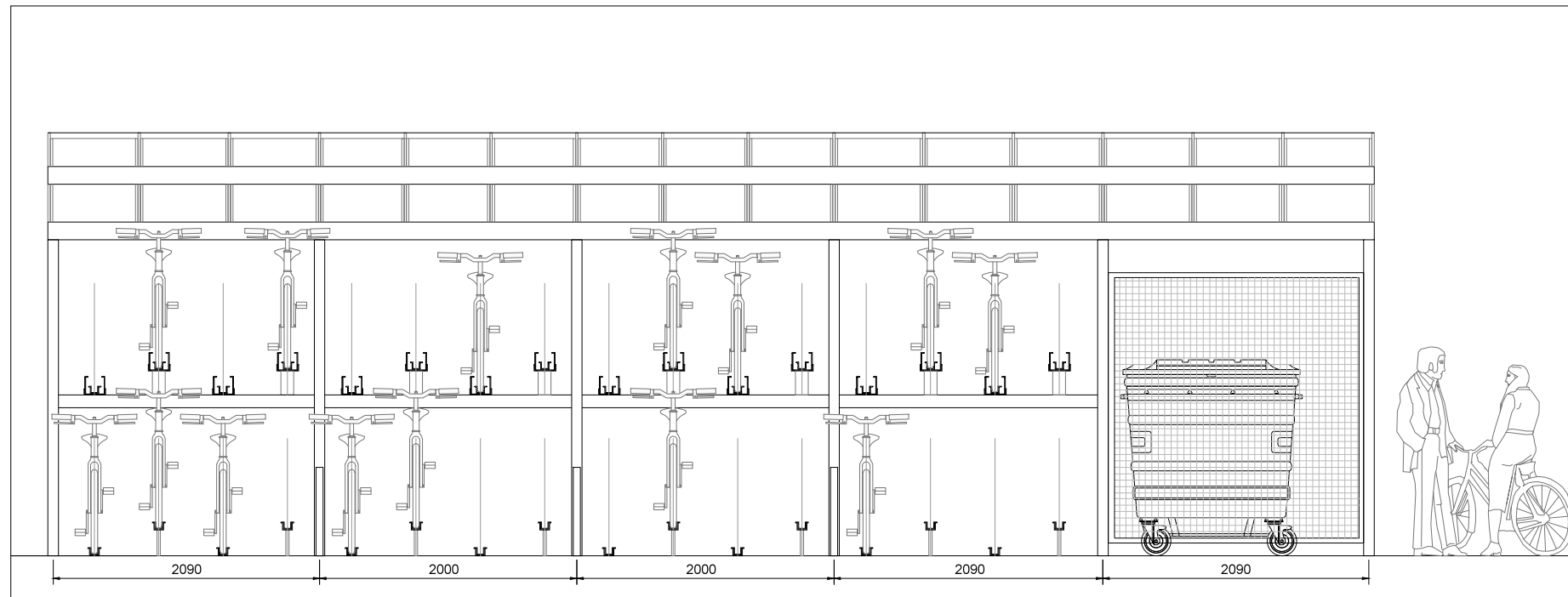


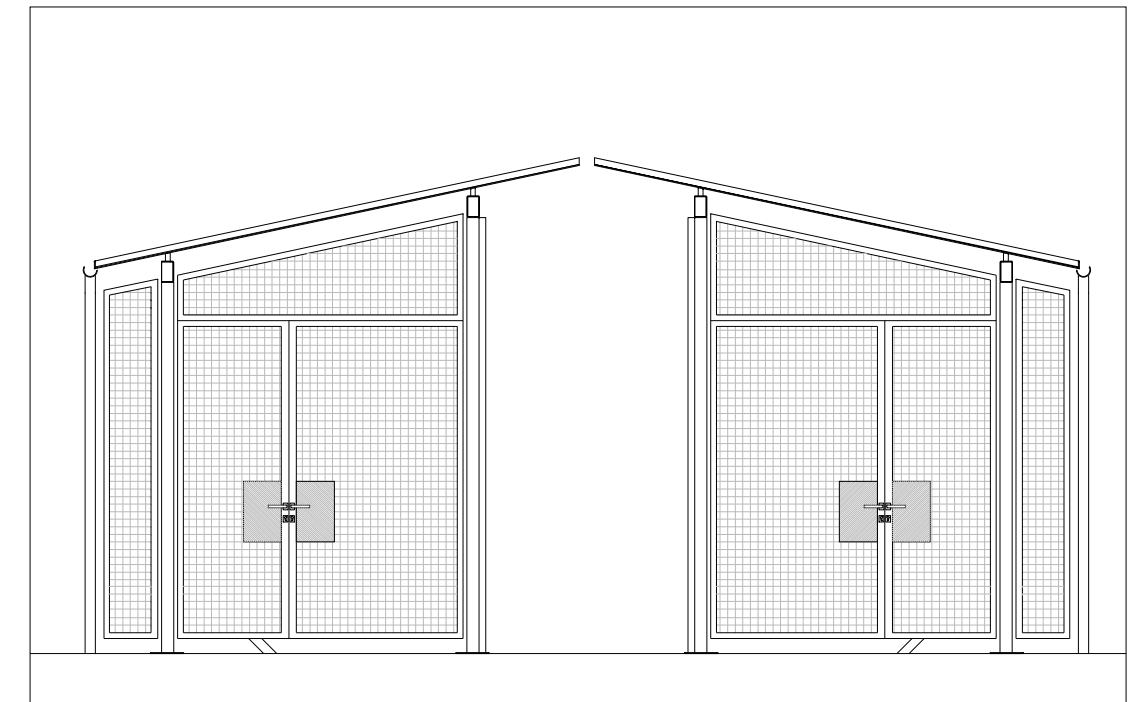
01 Cycle Store Module- Plan



02 Section A-A



03 Section B-B



04 Elevation C-C

Notes

Cycle Store
The proposals seek permission to erect a cycle store and bin store combined within the same Josta 'Berlin' cycle store. The covered store together with the double stacking Josta racks provides secure cycle parking for 64 bicycles. The entire structure is manufactured from galvanised steel and is set behind the perimeter wall.

Bin Store
Integrated within the same module are 2 separate bin stores. Each bin store houses 2 x1100litre Eurobins which are concealed behind. A total of 4400 litres of refuse/recyclables. The bin store is secure and accessed by the building management team. The bin stores are located within 10.0metres from the access gates and are directly accessed from the space in front of the double doors.

note	key	rev.	description	date	IMA Studio 5, The Glove Factory, Holt, BA14 6RL	info@ianmcardlearchitects.com t: 01225 784 160	drawn by YJ
01 Do not scale from this drawing		P	Issued for Planning	08.01.16	job title Elm House	status INFORMATION	checked by IM
02 All dimensions, in mm, to be checked on site by the contractor, such dimensions to be his responsibility					drawing title / location Proposed Cycle Parking and Bin Store	scale 1:50 @ A3	revision -
03 Report all drawing errors, omissions & discrepancies to the architect.					project number 14-02	drawing number P 16	

P