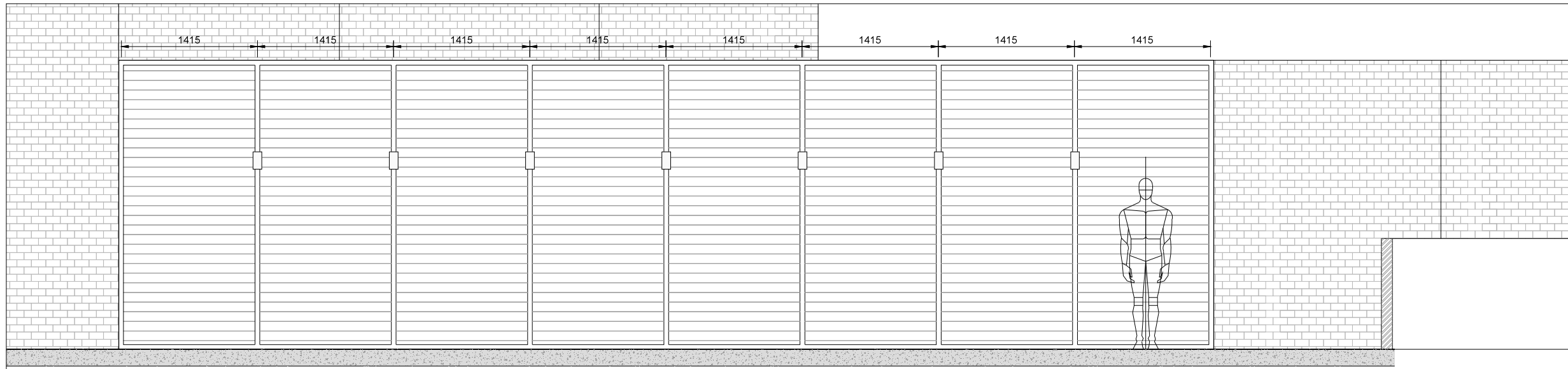
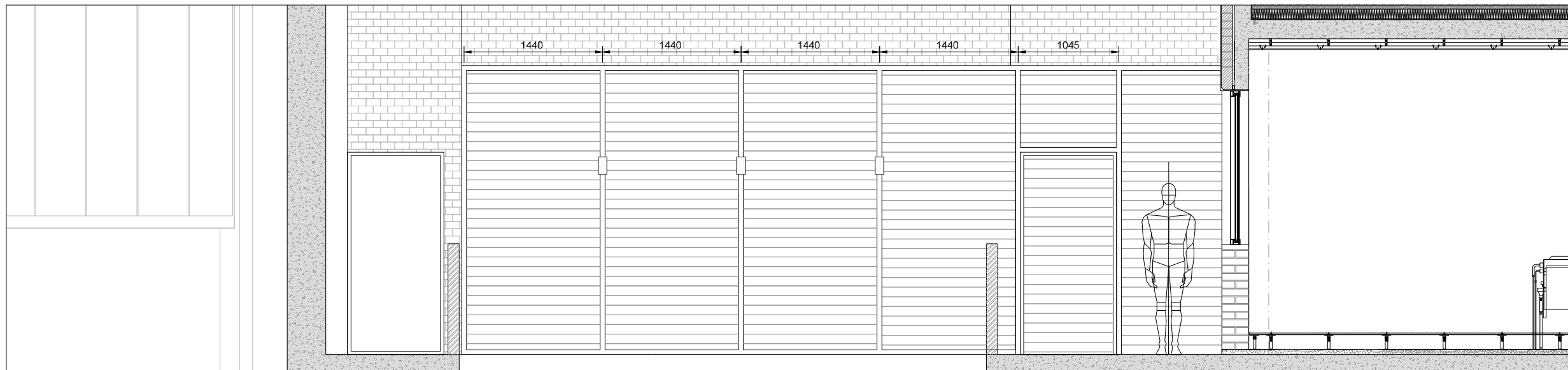


01 Proposed Elevation B-B



02 Proposed Elevation C-C



03 Proposed Elevation D-D

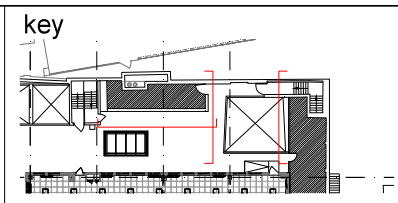
**Notes**

Ground Floor Plantroom Enclosures

The proposals seek permission to erect aluminium screens to the 2 new ground floor plantrooms.  
 The screens are to be manufactured from painted aluminium structural sections and infilled with painted aluminium interlocking planks. The planks are secretly fixed to the secondary structure behind. The colour is RAL 9007 dark grey.  
 The doors into the plant enclosures are finished in the same cladding planks and include stainless steel hinges and ironmongery. The plant rooms are locked and keys are retained by the management team.  
 The plant enclosures have LED downlights fixed to the primary structure operated by a time clock to provide safe access to and from the equipment behind.

**note**

01 Do not scale from this drawing  
 02 All dimensions, in mm, to be checked on site by the contractor, such dimensions to be his responsibility  
 03 Report all drawing errors, omissions & discrepancies to the architect.



rev.	description	date
P	Issued for Planning	08.01.16

**IMA** Studio 5, The Glove Factory, Holt, BA14 6RL  
 info@ianmcardlearchitects.com t: 01225 784 160

job title  
**Elm House**

drawing title / location  
**Proposed Plant Room Enclosures**

status <b>INFORMATION</b>	scale <b>1:50 @ A3</b>
project number <b>14-02</b>	drawing number <b>P 17</b>

drawn by  
**YJ**

checked by  
**IM**

revision  
**-**

**P**