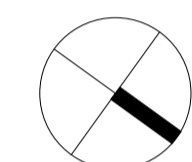
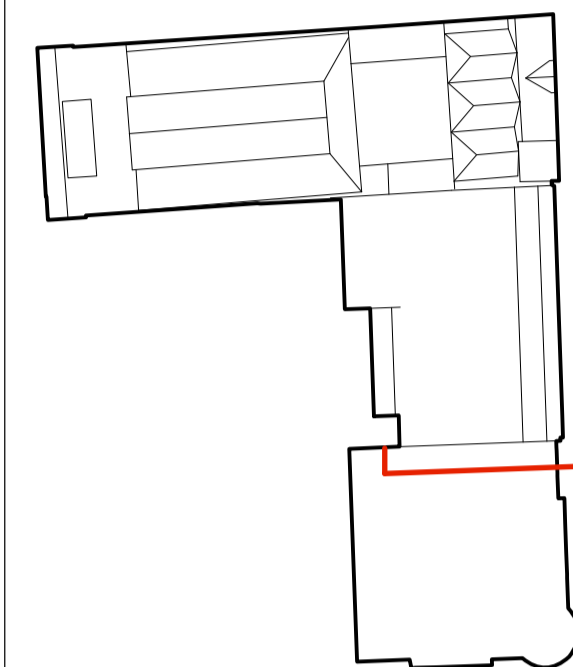


GENERAL NOTES

1. This drawing is the copyright of Haines Phillips Architects.
2. Do not scale from this drawing. Use figured dimensions only.
3. This drawing must not be used for land transfer purposes, or for construction purposes unless accompanied by an Architect's Instruction.



ISSUE	STATUS	COMMENT
SK	SKETCH	
P	PRELIMINARY	
PL	PLANNING	For comment and review Planning/Listed Building Application
T	TENDER	For pricing purposes only
C	CONSTRUCTION	For procurement & construction
AB	AS-BUILT	Record drawings on completion
L	LEGAL	Conveyancing or other legal purposes

REVISIONS

REV	DATE	NOTES
1	09/2015	First Issue.
2	02/2016	Roofline updated at Planning Officer's request.

HAINES PHILLIPS
ARCHITECTS

Tankerton Works
12 Argyle Walk
London WC1H 8HA
t 020 7833 9324
f 020 7837 2864
e office@hainephillips.co.uk

JOB TITLE
**The Richard Attenborough Theatre and Associated Development for RADA
16-18 Chenies Street WC1**

DRAWING TITLE
**As Proposed
18 Chenies Street
NE Elevation (2)**

DRAWN	DATE	JOB NR	DRAWING NR	ISSUE	REV
PC	09/15	3769	GA 555	PL	2

27 NE Elevation (2)

DATUM

