

### 3. Other design-amendments – 2 of 2

Council comment:

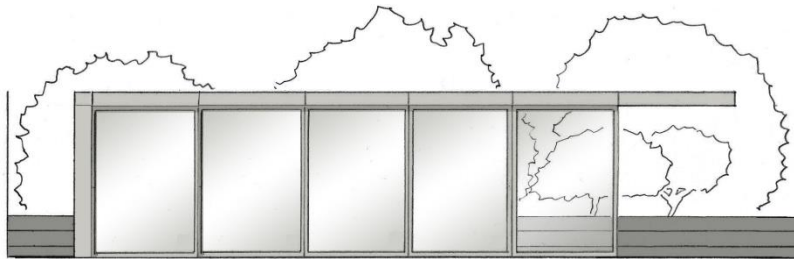
*On top of a reduction in size, some design tweaks could help a garden building to recede better, and address the CAAC's concerns – the glazing could be set further back under the roofline on the diagonal front, **the proposed soffit of the eaves should appear darker than it does in the D&AS visualisation, and the drawings should give a better idea of the size and detailing of the stained timber cladding to the walls.***

Design response:

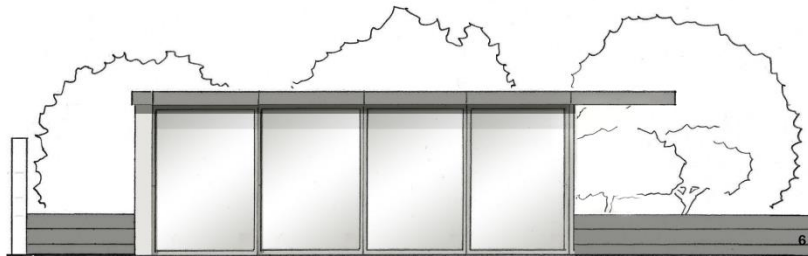
2. We increased the colour-contrast between the external walls' cladding and the soffit:

The walls are clad in a light grey wash.

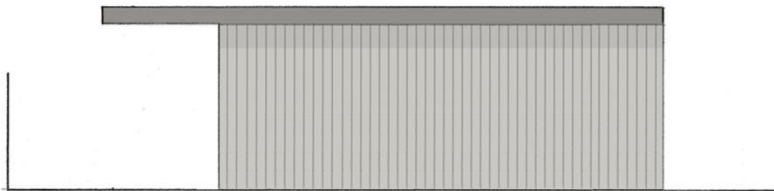
The soffit is clad in an anthracite wash.



Previous front-elevation



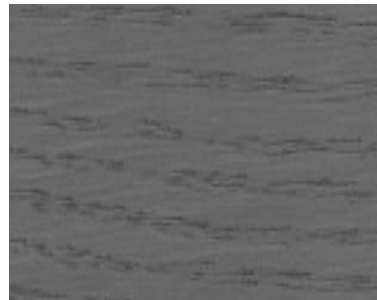
Revised front-elevation



Revised rear-elevation



Stained timber cladding to external walls



Stained timber cladding to soffit