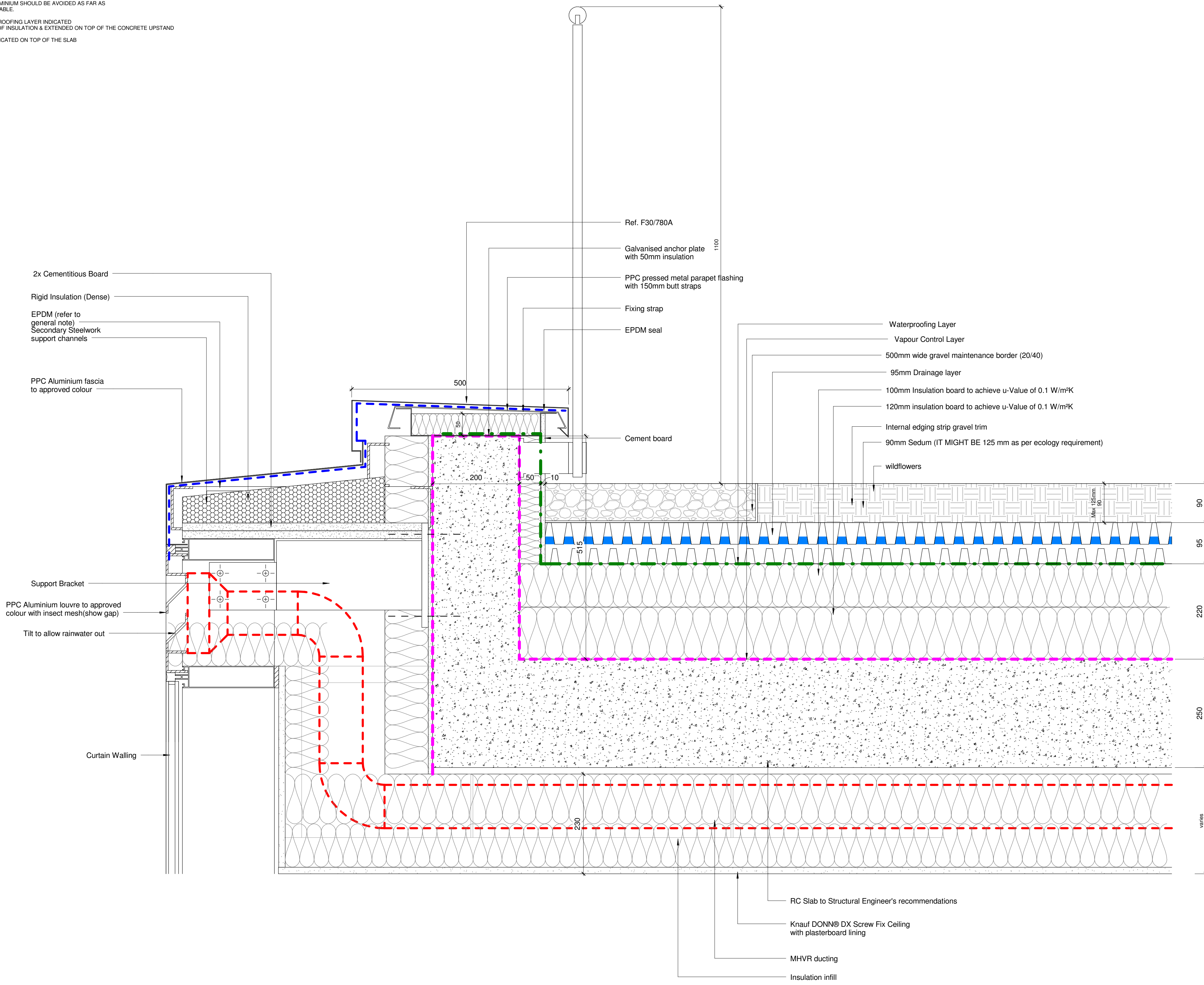


NOTE:
 ANY RIGID CONNECTION BETWEEN THE BOARDS AND ALUMINIUM SHOULD BE AVOIDED AS FAR AS PRACTICABLE.
 WATERPROOFING LAYER INDICATED ON TOP OF INSULATION & EXTENDED ON TOP OF THE CONCRETE UPSTAND
 VCL - INDICATED ON TOP OF THE SLAB



RESIDENTIAL:

U-VALUE TO BE ACHIEVED AS PER ENERGY STRATEGY

-EXTERNAL WALLS	W/m2K 0.18
-ROOF (INCLUDING TERRACE AND BALCONY)	W/m2K 0.11
-WINDOWS ROOFLIGHT GLAZED DOORS	W/m2K 1.3
-CURTAIN WALLING	W/m2K 1.35

OFFICES:

-EXTERNAL WALLS	W/m2K 0.35
-ROOF	W/m2K 0.15
-WINDOWS ROOFLIGHT GLAZED DOORS	W/m2K 1.5
-CURTAIN WALLING	W/m2K 0.30

GENERAL NOTE:
 EPDM (ARBO EPDM MEMBRANE WITH ARBO SA & ARBO MEMBRANE ADHESIVE OR SIMILAR APPROVED PRODUCTS) TO BE ALLOWED FOR AT ALL PENETRATIONS TO EXTERNAL FACADE (INCLUDING AT CURTAIN WALL JUNCTIONS, DUCTS, WINDOWS ETC) AND TO BE APPLIED AS PER MANUFACTURERS RECOMMENDATIONS. MINIMUM 100MM LAPS TO BE ALLOWED FOR WITH VCL.

FIRE BARRIERS REQUIRED TO EACH WINDOW SURROUND

BRICK TIES TO ACHIEVE TYPE 1 PERFORMANCE / 7.5 TIES PER M2. SFS & TIES SPACED AT 600MM HORIZONTAL CENTRES REQUIRE A VERTICAL TIE SPACING MIN OF 225MM. (FOR 60MM FLOREN PALLAS BRICK COURSING VERTICAL SPACING REQUIRED EVERY 3RD COURSE.) TIES TO BE POSITIONED WITHIN 225MM OF ANY WINDOW/DOOR JAMB. A STUD WITH A CHANNEL ATTACHED AND TIES AT 225MM CTS SHOULD BE POSITIONED EITHER SIDE OF ANY JAMBS (WITHIN 225MM).

MASONRY STEEL SUPPORT SYSTEM ANCON OR SIMILAR APPROVED

WATERPROOFING LAYERS AT ZERO FALLS WILL ONLY BE ACCEPTED IF THE WATERPROOFING MEMBRANE HAS A THIRD PARTY ASSESSMENT SPECIFICALLY FOR THAT USE. THE MEMBRANES SHOULD ALSO BE FULLY PROTECTED FROM DAYLIGHT. THE MEMBRANE SHOULD BE CAPABLE OF WITHSTANDING ANY POINT LOADS FROM SUPPORTS TO DECKING OR PAVING.

MINIMUM 75MM UPSTAND FROM TOP INSULATION TO WATERPROOF MEMBRANE
 DRIP NOSE DETAIL TO MEET NIBC REQUIREMENTS

REV F
 NOTE UPDATED - THE CURTAIN WALL U VALUES FOR OFFICES IS 0.30 W/M2K

This drawing must not be scaled.
 Figured dimensions and levels to be used.
 Any inaccuracies must be notified to the architect.
 Detail drawings and large scale drawings take precedence over smaller drawings.
 A1

Rev:	Chk'd:	Rev:	Chk'd:
A Detail Redrawn	17.08.15		
B Stage E Issue	28.08.15		
C Drainage layer increased by 15mm	19.10.15		
D General update	23.10.15		
E Stage E Update	10.11.15		
F Re-issued for Stage E	18.12.15		

PRELIMINARY	
PLANNING	
DESIGN	
TENDER	✓
CONSTRUCTION	

powelldobson
 ARCHITECTS

London Office: Sherwood House, Forest Road, Kew, TW9 3BY
 Tel: +44 (0)208 3322 631, email: london@powelldobson.com

PDA Job No:	DRG NO:	REV
14007	00 12 A	(21)402 F
VOLUME	LEVEL	DR TYPE
		NUMBER

Contract: 102 Camley Street Phase 1
 Taylor Wimpey Central London

Title: External Wall D5 & D6

Scale: 1 : 5@A1
 Date: 23/10/15
 Drawn: FI
 Checked: MH