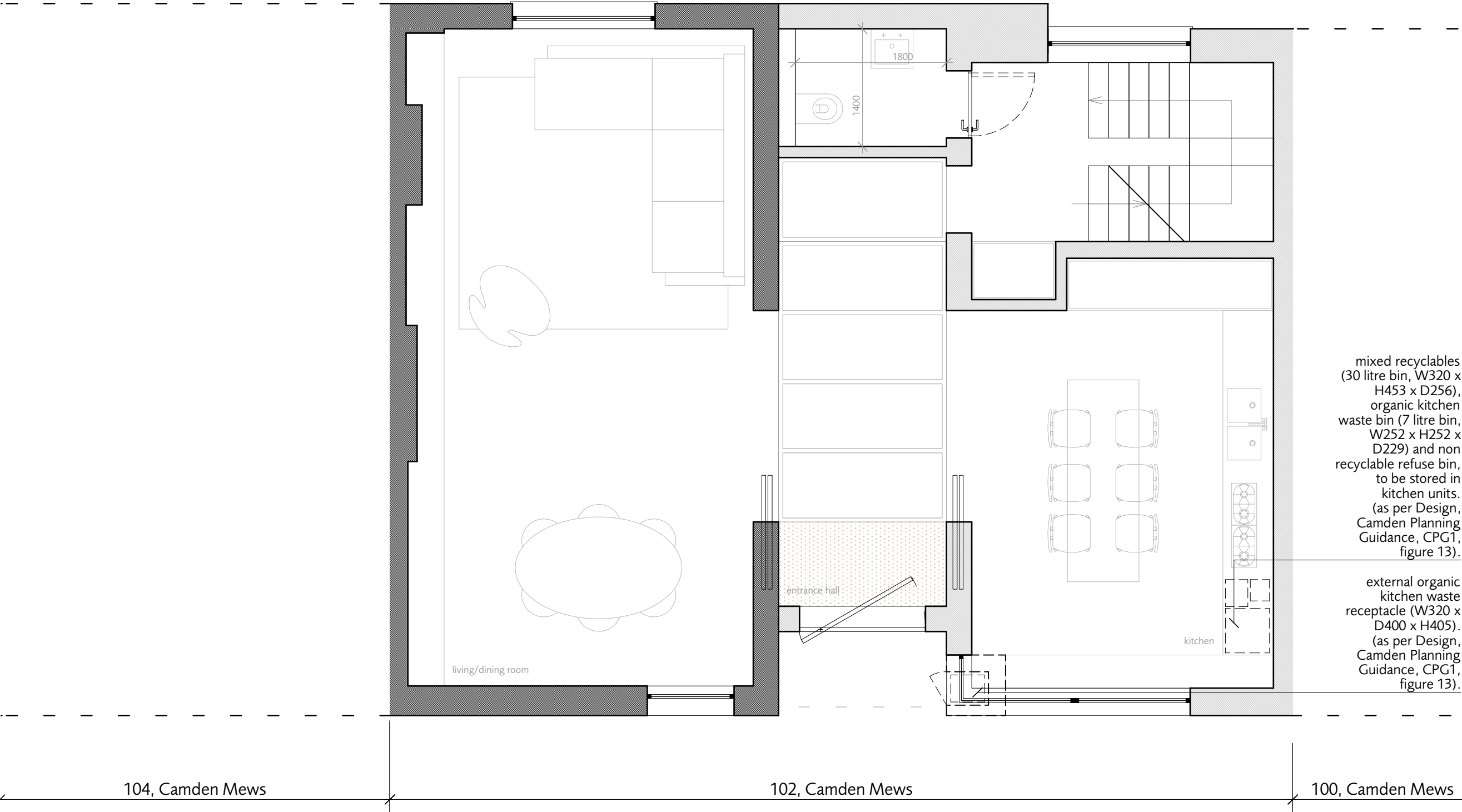


© Dols Wong Architects. this drawing may not be copied, altered or reproduced in any way or passed to a third party without their written authority
report all discrepancies to the architects or engineers before commencing construction or fabrication
read in conjunction with all other relevant architects and engineer drawings, schedules and specifications
do not scale off this drawing ref. noted dims only

communal garden to the rear of Cliff Road Studios



mixed recyclables
(30 litre bin, W320 x
H453 x D256),
organic kitchen
waste bin (7 litre bin,
W252 x H252 x
D229) and non
recyclable refuse bin,
to be stored in
kitchen units.
(as per Design,
Camden Planning
Guidance, CPG1,
figure 13).

external organic
kitchen waste
receptacle (W320 x
D400 x H405).
(as per Design,
Camden Planning
Guidance, CPG1,
figure 13).

h 04.02.16
revised bin areas
g 04.01.16
external bin area added.
f 04.01.16
general revision
e 11.12.15
discharge of condition 8,
details of internal provision
for at least 3 cycles together
with storage of refuse and
recycling
d 10.12.14
general revision
c 26.08.14
for planning

proposed ground floor plan	121h
-------------------------------	-------------

102, Camden Mews London NW1 9AG	1108 1:50 @A3
---	-------------------------

Dols Wong
architects

The Studio
61, Brondesbury Road
London NW6 6BP
44 (0)20 7372 2121 architects@dols Wong.com