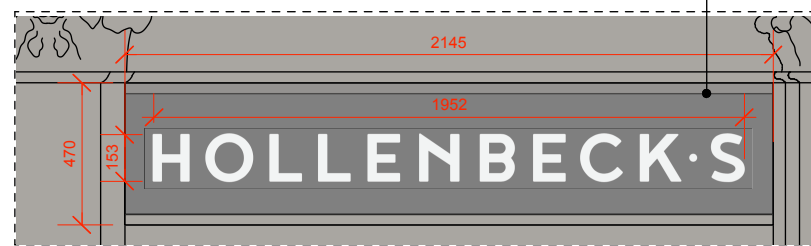




REFERENCE IMAGE

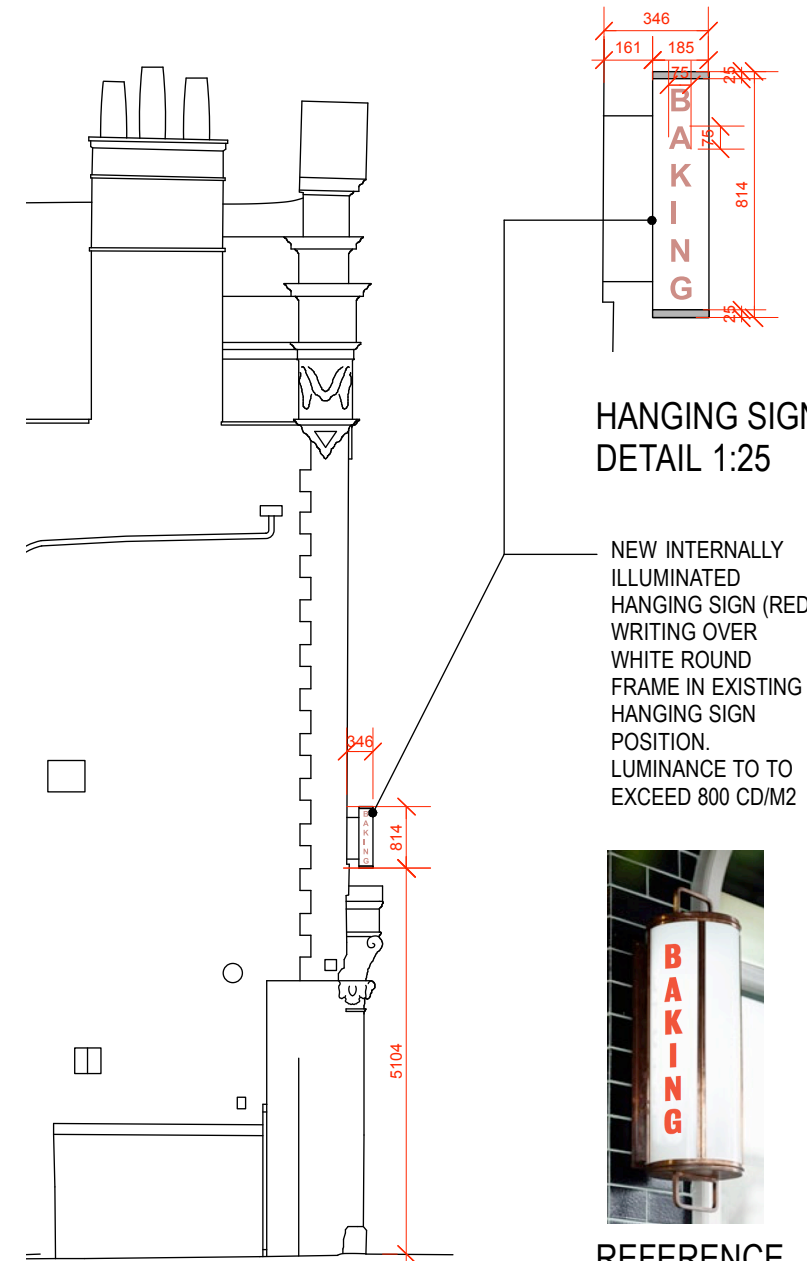


PROJECTED SIGN FRONT 1:25

- EXISTING FASCIA LETTERING AND HANGING LIGHTS REMOVED
- NEW INTERNALLY ILLUMINATED HANGING SIGN IN EXISTING POSITION
- NEW WARM WHITE 64LM UPLIGHTERS BEHIND FASCIA ILLUMINATING FRONTAGE AT FIRST FLOOR
- BACKLIGHT ILLUMINATED SIGN -MADE UP OF BLACK DECORATED TIMBER FASCIA. LUMINANCE OF LETTERING NOT TO EXCEED 600 CD/M2



PROPOSED FRONT ELEVATION (SIGNAGE)



HANGING SIGN DETAIL 1:25

- NEW INTERNALLY ILLUMINATED HANGING SIGN (RED WRITING OVER WHITE ROUND FRAME IN EXISTING HANGING SIGN POSITION. LUMINANCE TO TO EXCEED 800 CD/M2



REFERENCE IMAGE

PROPOSED SIDE ELEVATION

Notes

Scale



Issue	2016.01.28 Signage Revised	Drawing Title	Proposed Front and Side Elevations
Project	171 Camden High St	Client	RR
Do not scale from drawing, all dimensions to be checked on site. Report omissions and discrepancies to the Architect immediately. © 2015 Red Deer Ltd	Drawing Number	133 - 02 - 310	Revision
Scale	1:100@A3	Drawn By	LR
Red Deer Ltd 51 Grannden Avenue London, E8 3JA +44 (0) 20 907 7081 hello@reddeer.co.uk			red deer